

# EDWARD PEAKE CAREERS NEWSLETTER JULY 2024

'LIVE, LOVE, LEARN'

"I WILL INSTRUCT YOU AND TEACH YOU IN THE WAY YOU SHOULD GO;  
I WILL COUNSEL YOU WITH MY LOVING EYE ON YOU."

PSALM 32:8

# Welcome

Welcome to our final careers newsletter of this academic year. This issue features a focus on careers in logistics and supply management as well as an insight into what we have in store next year.

Please do share this newsletter with your child as they will find helpful resources and information throughout.

We wish you a happy and restful summer break and look forward to seeing you in September.

## Key Contacts

Whilst you can always talk to any member of staff regarding careers and careers provision at the school, it is useful to be aware of those people in school with specific responsibility for careers. We are a small but expanding team and you will see this list grow as we develop.

Careers leader: K Rodgers, Assistant Headteacher

Careers link governor: P Giles, Governor

Careers admin support: S Lee, Office manager

For specific information regarding curriculum areas and careers, please contact the relevant subject leader.

For careers specific information, advice, support or suggestions please email: [careers@edwardpeake.beds.sch.uk](mailto:careers@edwardpeake.beds.sch.uk)

## Get Involved

We are always looking for volunteers to come in and speak to pupils about their experience of work and how they chose the career they did. If you would like to offer some time to come and speak to or work with pupils in school please email the school via:

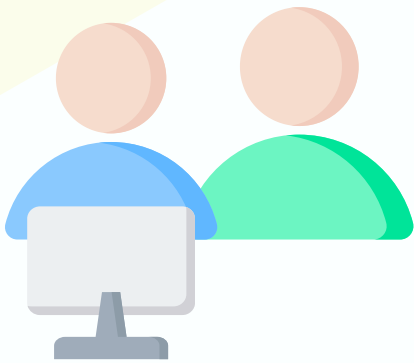
[careers@edwardpeake.beds.sch.uk](mailto:careers@edwardpeake.beds.sch.uk)

# CAREERS PROGRAMME

## 2024-2025

We have some exciting events lined up next academic year to help develop and extend our pupils knowledge of different career paths and the world of work. These events will compliment our careers programme that is delivered through our life skills lessons.

Details of some of these events are outlined below.



Some of our pupils will get the chance to undertake work shadowing. This will be a great opportunity for pupils to get an insight into the workplace and meet employers and employees.

Dell Technologies will be coming in to run a workshop with pupils to learn more about the social issues that affect their community and how technology can be used to help. They will develop transferable skills and develop their creativity and teamwork skills.



The Rise Initiative will be working alongside volunteers from companies such as KPMG, Price Waterhouse Copper and Grant Thornton to deliver workshops to pupils that help pupils to realise the skills they already have and how they can develop these in school to reach their potential.

We will host our first ever careers fair. This will be an opportunity for all of our pupils to meet representatives from different sectors, careers and further education institutions. They will be able to ask questions and get some top tips from the experts.

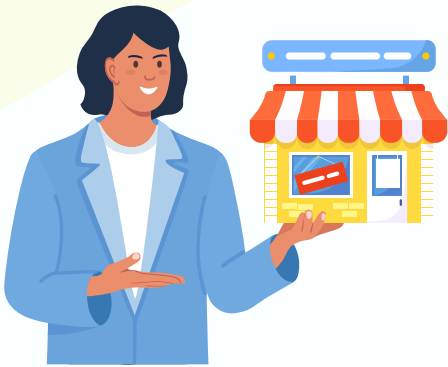


# CAREERS PROGRAMME

## 2024-2025

We have some exciting events lined up next academic year to help develop and extend our pupils knowledge of different career paths and the world of work. These events will compliment our careers programme that is delivered through our life skills lessons.

Details of some of these events are outlined below.



Our enterprise sessions will help pupils to develop their problem solving, team work and presentation skills. We have a number of volunteers from our school community who are supporting out pupils with this project.

Pupils in Key Stage 3 will be using a new programme called Unifrog from September. It will help pupils to explore different careers as well as keep a track of experiences they have gained. Parents will also be given resources to help them explore the Unifrog system.

unifrog

## CAREERS AT EDWARD PEAKE

Please take a look at the careers section of our school website where you will find a plethora of resources and information.

If there is any information that you feel would be of benefit to your or your child then please email [careers@edwardpeake.beds.sch.uk](mailto:careers@edwardpeake.beds.sch.uk) so that we can make this available to you via our newsletter, email or our school website.

# Industry Spotlight: Logistics and Supply Chain



Logistics is often an overlooked and misunderstood career path. It also happens to be one of the fastest growing sectors in our local area. So what is logistics? It is getting something from A to B but it's not just the journey, it's all the things it takes to make the journey happen. The planning, the scheduling, the vehicles, the routes, the quantity, the quality and most importantly, the people and skills needed to move things.

The National Careers Service is an excellent starting point to find out more:

<https://nationalcareers.service.gov.uk/job-categories/delivery-and-storage>

Working in logistics and supply chain management has many varied roles. Some are centred around working with people such as customer care, human resources and working customs both here and abroad. Others involve physically working with goods such as warehousing, transportation and infrastructure. With so much trade being conducted worldwide, a career in logistics could literally take you any where.

## Key skills required:

Adaptable	Problem solving
Attention to detail	Self motivated
Customer focused	Team player
Good communication skills	Negotiation and influencing skills

Logistics is an area where the impacts are real every single day. This sector has a history of promoting from within and lots of training takes place in role. That being said you can give yourself a head start by looking at the routes into the sector.

From apprenticeships, summer internships, placements and graduate schemes, there are lots of options to get you started. A useful resource to find out more and choose the path that is right for you, can be found here:

<https://generationlogistics.org/find-your-path/>

## Useful resources:

<https://generationlogistics.org/find-your-future/>  
<https://www.prospects.ac.uk/jobs-and-work-experience/job-sectors/transport-and-logistics>

# Industry Spotlight



South East  
Midlands  
CAREERS HUB

## LOGISTICS & SUPPLY CHAIN

AVERAGE ADVERTISED SALARY

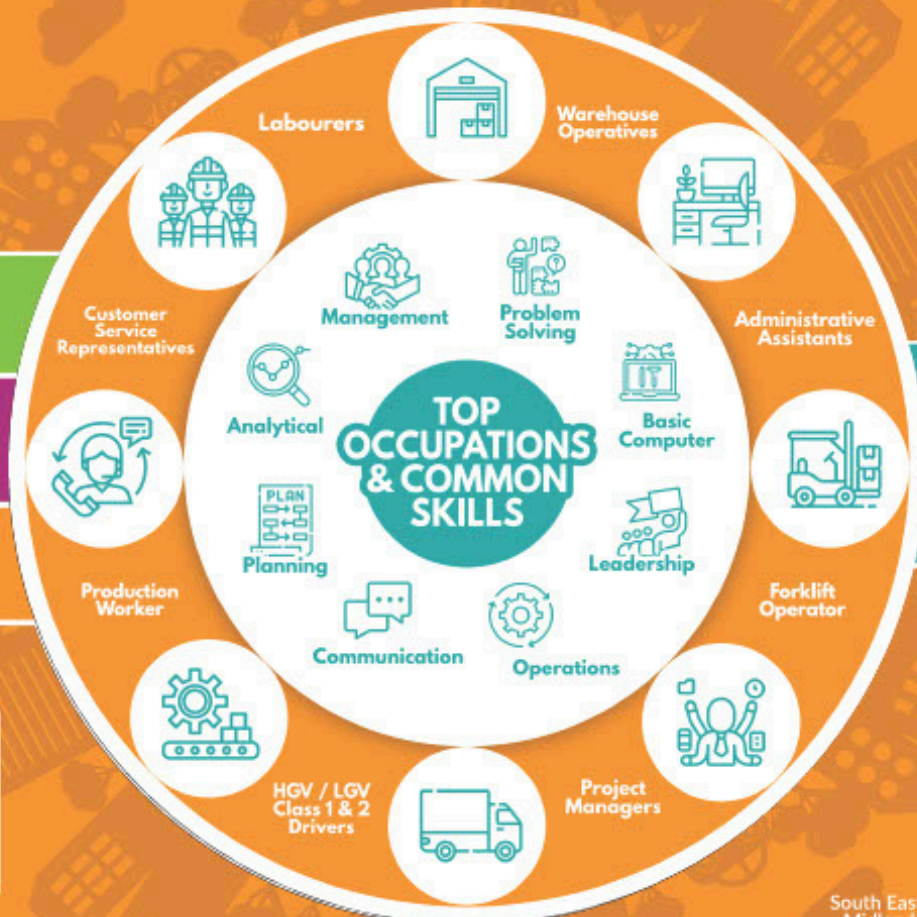
£29,000

NUMBER OF  
PEOPLE EMPLOYED

139,000

EXPECTED GROWTH

26%



SCAN ME



**NetworkRail**



**SAVE  
THE  
DATE!**

**CAREERS  
EVENT  
2024**

**9th & 10th November 2024  
10:30am - 3:00pm  
The Quadrant: Milton Keynes**



[www.networkrail.com](http://www.networkrail.com)



# THANK YOU

We hope you have enjoyed our first careers newsletter #TeamPeake.

Check out our careers page to learn more about how we support our learners for the future



Edward Peake Middle School  
Potton Road  
Biggleswade  
SG18 0EJ

T: 01767 314562

E: [careers@edwardpeake.beds.sch.uk](mailto:careers@edwardpeake.beds.sch.uk)

[www.edwardpeake.beds.sch.uk](http://www.edwardpeake.beds.sch.uk)

[twitter.com/@CareersEP](https://twitter.com/CareersEP)

