

December 2022

# THE PEAKE POST

## CONTENTS

### Message from Head Teacher

Staff News  
Key news  
Shuttleworth  
Safeguarding  
Community

Pupil Support  
Road safety  
Winter safety  
Big Draw  
Author visit

CBC update  
MP viist  
Shropshire visit  
SEND support  
Parent/carer information

School events  
Family activites  
Cahristmas Jumper Day  
Fundraising  
Key Dates

Reflection  
Christmas reflection and  
message.



### Message from the Head Teacher

As we approach the Christmas break, after what has been an incredibly busy term, I would like to thank pupils, staff and parents/carers for their continued support in everything we do.

In the midst of our teaching and learning, preparation for our festivities, assessments, enrichment activities, and community activities, we are mindful of the need to reflect on the true meaning of Christmas. People all over the world will be celebrating the birth of Jesus Christ and sharing in the joy that this brings.

I would just like to wish you all a very joyful, healthy and peaceful; Christmas. Please take care, stay safe and enjoy time with your friends and families.

Miss Z.J.Linington

# STAFF NEWS

At the end of term, it is always with mixed emotions that we say "Goodbye and thank you" to some of our staff as they move on and "welcome" or "congratulations" to others as they join us or are promoted to new posts.

## **Goodbye and thank you to:**

*Mrs Austin, Teaching Assistant*

*Mrs Dennis, Cleaner*

*Miss Peate, SENDCo*

## **Hello and welcome to:**

*Mrs Anderson, SENDCo*

## **Congratulations to:**

*Mrs Taylor who has taken on the role of Inclusion  
Administration Manager*

# Key news

## Subject Consultation Evenings 16, 18 and 24 January

Please book an appointment with your child's subject teachers to discuss their attainment and progress during the first term of school. Appointments will take place via video calls and can be booked via our parents evening booking system:

<https://edwardpeake.schoolcloud.co.uk/>

Further details on how to book your appointments and access the video calls are in a letter that accompanies your child's end-of-term report. A video guide is also available on our school website:

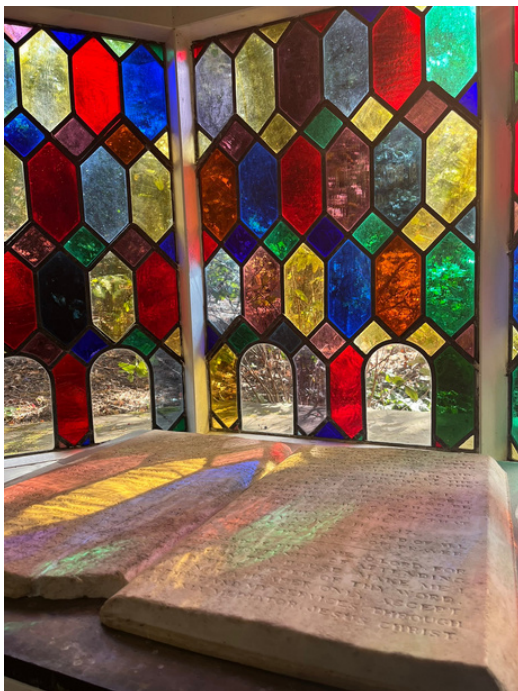
<https://www.edwardpeake.beds.sch.uk/parents/parents-evening-booking-system/>

Bookings open at 8am on Wednesday 5 January and close at midday on Monday 17 January. If you require any assistance in booking your appointment please contact the school office.



# Shuttleworth visit

Year 5 visited Shuttleworth College and Gardens to investigate the key features of different machines invented in the local area.





# Safeguarding information

If you think a child you know is being harmed or at risk

of being harmed, please contact the Access and Referral Hub on 0300 300 8585, who you can talk to about your concerns.

They will give you advice or may investigate the circumstances. All child protection calls are treated in confidence and you don't need to give your details.

Everyone has a responsibility to protect children from harm.

Out of hours: 0300 300 8123

Email: [cs.accessandreferral@centralbedfordshire.gov.uk](mailto:cs.accessandreferral@centralbedfordshire.gov.uk)

Further support agencies can be found on our school website under the parents and pupil support section.

# Community support

## WARM SPACES IN BIGGLESWADE

A warm space is a friendly, comfortable environment where people can feel safe and at ease.

Warm spaces are being established across the country to support people with the cost of living crisis during the winter months.



Anyone is welcome to access them regardless of their background or their circumstances, you can just turn up.

Venue	When	What	Contact	Christmas Closing Dates
<b>Labour Hall</b> Crab Lane Biggleswade, SG18 0LN	Monday 10am - 2pm Thursday 5pm - 9pm Saturday 10am - 2pm	Free Laundry facilities – wash and dry, hot drinks, WiFi, heat and eat – use of kitchen	labourhall@gmail.com	Closed Christmas Eve to 5th January
<b>Kings Corner</b> 6 Britten Place, Sullivan Court, Biggleswade, SG18 8RE	Tuesday 10.30am - 1.30pm Thursday 10.30am - 1.30pm	Hot drinks & soup lunch	Use Facebook messenger to contact King's Corner or email mike@bbchurch.org.uk	Closed from 24th Dec to 5th January
<b>Krafty Shed</b> Unit 4, Purcell Pl, Sullivan Court, Biggleswade, SG18 8SX	Wednesday 9am - 5pm	Warm space – bring your own book/activity, warm drinks available	hello@kraftyshed.co.uk	Closed 23rd-27th, 31st Dec and 1st-3rd January
<b>St Andrews Church</b> Shortmead St, Biggleswade, SG18 0AT	Thursday 10.30am - 3pm Saturday 10.30am - 3pm	Drop in for hot drinks and soup served at lunch	01767 317207 office@standrewschurchbw.org.uk	Closed Christmas Eve and New Year's Eve
<b>Baptist Church</b> Rooms 3 & 4, 24 London Rd, Biggleswade, SG18 8EB	Friday 2pm - 6pm	Hot drinks and soup & a roll	Use Facebook messenger to Biggleswade Baptist Church	Closed 23rd and 30th December
<b>Biggleswade Library</b> Chestnut Avenue Biggleswade, SG18 0LL	Monday - Closed Tuesday - Friday 9am - 6pm Saturday 9am - 4pm Sun - Closed	Free Internet access Free access to software	0300 300 8055	Closed Christmas Eve from 1pm, 25th-28th Dec, New Year's Eve from 5pm and 1st - 3rd Jan
<b>Saxon Leisure Centre</b> Saxon Drive, Biggleswade, SG18 8SU	Monday - Friday 6am to 10pm Saturday 7.30am-9pm Sunday 7am-9pm	This centre has a café (not free) and seating area.	01767433133 enquiries.saxon@slc.co.uk	Closed Christmas and Bank Holidays. Call or email for more details

Biggleswade Warm Spaces has been supported by Preen CIC, Biggleswade Churches Together, Biggleswade Express and many volunteers, to whom we are very grateful. Biggleswade Warm Spaces is coordinated by Biggleswade Labour Party

LIVE LOVE LEARN #TEAMPEAKE

# Pupil support



There is a lot of joy and happiness associated with the festive season, but for some, it may not always be a positive time.

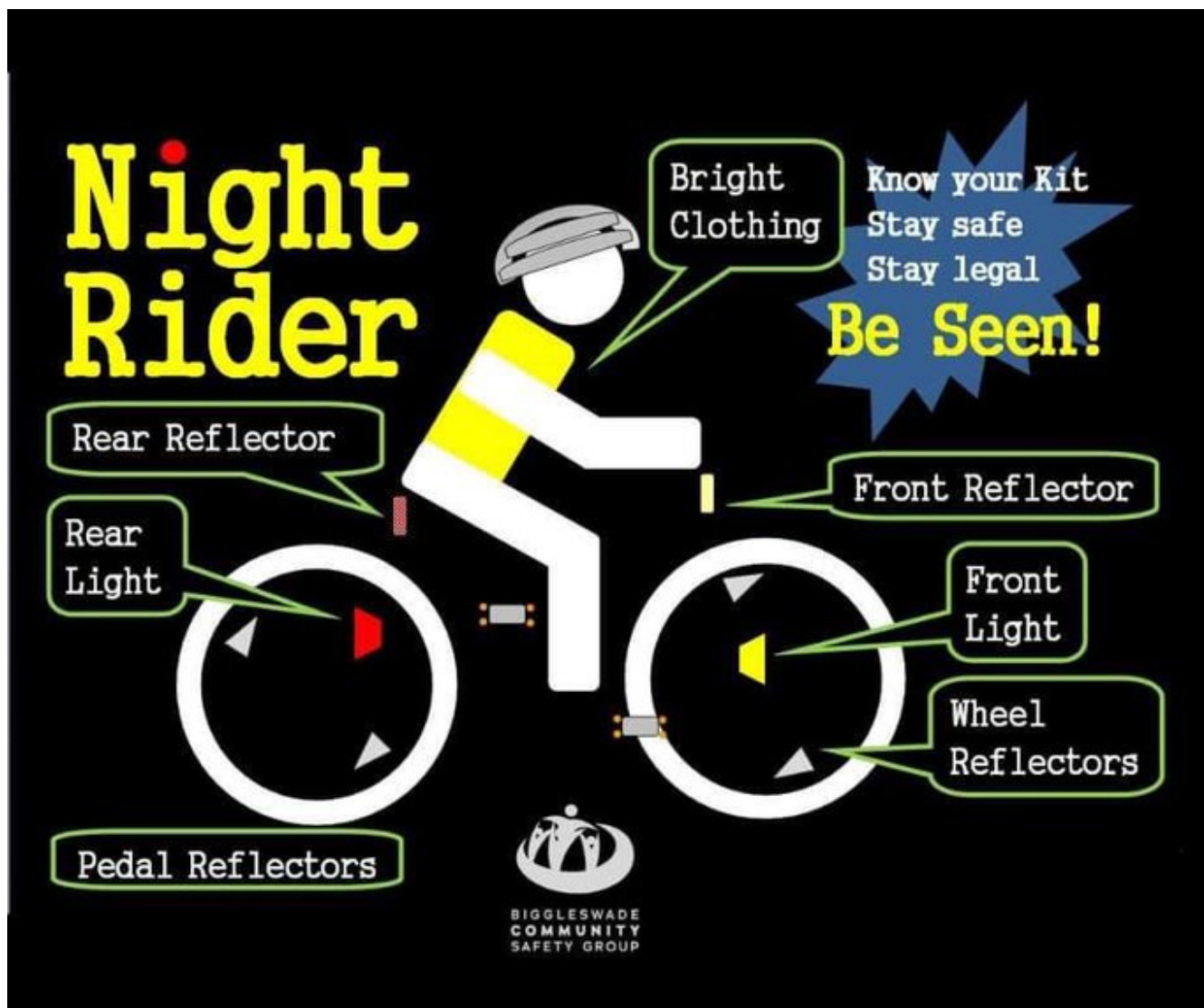
The shorter days, colder temperatures and the pressures associated with this time of year can impact many people, adults and children alike.

<https://www.annafreud.org/schools-and-colleges/resources/my-self-care-plan-primary/>

<https://www.annafreud.org/schools-and-colleges/resources/my-self-care-plan-secondary/>



# ROAD SAFETY



# Winter safety

## *Winter* **WATER SAFETY**

**In winter, more people who are walking or running alongside water fall in and drown than in any other season.**

Slippery paths, patches of ice and a lack of daylight can make being near water more dangerous than in the summer months. If you fall into the water, the cold temperatures make it difficult for you to control your breathing, to use your hands to climb out and can even cause you to have a heart attack.

So, follow our safety tips to make sure that your winter walks are enjoyable and safe.



### **KEEP BACK FROM THE EDGE**

When walking alongside water keep back from the edge.



### **ONLY USE WELL LIT AREAS**

Time your walks to make the most of the daylight; if you need to walk in the evening only use well-lit areas or take a route not alongside water.



### **KEEP DOGS ON THEIR LEADS**

Keep dogs on their leads when near ice and don't throw sticks or toys onto the ice.



### **TEACH CHILDREN NOT TO GO ON TO THE ICE**

Teach children not to go onto the ice under any circumstances.



### **DON'T GO ON THE ICE TO RESCUE A DOG**

Don't go onto ice or into the water to rescue a dog, move to somewhere that the dog will be able to climb out and call them towards you.



# Parent information

## The Big Draw

As part of our reward system pupils gain class charts for excellent, work, effort and contributions. For every 10 class chart points received the pupils will gain a raffle ticket that is then entered into The Big Draw at the end of each full term to win a £25 Amazon voucher.

Autumn 2022 winners are:

**Year 5 - Ryan M**

**Year 6 - Samuel B**

**Year 7 - Amelia H**

**Year 8 - Rayanna A**

Remember you have to be in it to win it!



**Congratulations**



# AUTHOR VISIT

Our Year 5 pupils had an amazing visit from Piers Torday this morning, inspiring them to create their own stories and teaching them about issues such as climate change and animal extinction. The photographs will give you a flavour of the fantastic event.



LIVE LOVE LEARN #TEAMPEAKE





# A visit from the local MP

A big thank you to MP Richard Fuller for taking the time to visit our Eco Club and Plastic Free School.





# Year 7 Shropshire visit



LIVE LOVE LEARN #TEAMPEAKE

# SEND support



Parent/ Carer Workshop

## Autism and Sensory Processing

Monday 27th February | 6 - 9pm

£15 AB Members / £20 Non-AB Members

This workshop provides you with the opportunity to explore and understand:

- The impact of sensory processing differences on the lives of autistic individuals
- Resources and strategies to support health and wellbeing where there are sensory challenges
- When to ask for professional input

LIMITED NUMBER OF SPACES AVAILABLE

To book:

📞 01234 214871

✉ [enquiries@autismbeds.org](mailto:enquiries@autismbeds.org)



The training will be online, using Zoom. Once booked on, we will provide you with the details to join.



Parent/ Carer Workshop

## Autism and Behaviour

Saturday 29th April 2023 | 10am - 1pm

Rufus Centre, Flitwick

£15 AB Members / £20 Non-AB Members

This workshop provides you with the opportunity to explore and understand:

- The difficulties autism may cause in regulating behaviours
- How to adapt environments & practices to meet the needs of autistic individuals
- Strategies for managing difficult situations

LIMITED NUMBER OF SPACES AVAILABLE

To book:

📞 01234 214871

✉ [enquiries@autismbeds.org](mailto:enquiries@autismbeds.org)



LIVE LOVE LEARN #TEAMPEAKE



# Information for parents/carers

## Medicines and injuries

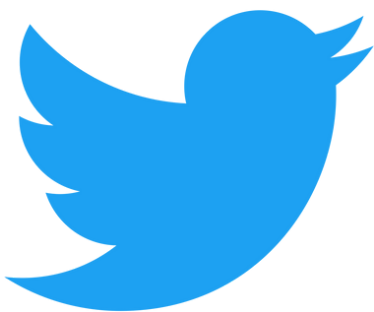
All medicines sent in to school must be clearly named and labelled. Only medicines prescribed by a doctor will be permitted in school, and a School Medicine Record form must be completed by the parent/carer to give consent for the medicine to be administered. Children who suffer injuries or who are suffering from an illness may require a PEEP (Personal Emergency Evacuation Plan) when they return to school. Please contact the main office who will be able to issue further guidance on this.

## Keeping in touch

Don't forget to check the school websites for daily updates, the latest news articles and upcoming event information. Twitter is our main social media channel. Thank you to all members of our community who are following our wonderful school.

Visit our school Twitter page to see news items, photographs of our wonderful community and daily updates.

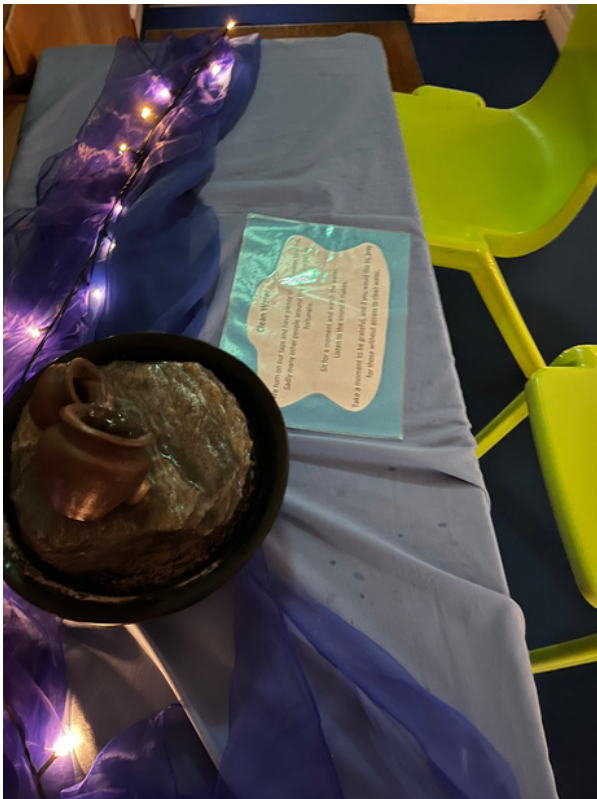
Follow us @EdwardPeake



LIVE LOVE LEARN #TEAMPEAKE



# School events



LIVE LOVE LEARN #TEAMPEAKE

# Family activities

## CHILDREN'S SERVICES

### TENNIS COURSE 6 WEEKS

Riverside Tennis Club  
Goldington Road, Bedford MK40 3EA

Date: Tuesdays  
21st, 28th February 2023  
7th, 14th, 21st, 28th March 2023

Time: 6.30pm - 7.30pm

Cost: Free for families in Bedfordshire  
and Milton Keynes

Children/Young People must  
be supervised at all times by  
Parent/Carer

For ages  
10-17 years



#### Book Now



[enquiries@autismbeds.org](mailto:enquiries@autismbeds.org)



01234 214871 (general enquiries)

## CHILDREN'S SERVICES

### TIDDENFOOT SWIMMING 2 SESSIONS

Tiddenfoot Leisure Centre  
Mentmore Road, Leighton Buzzard, LU7 2AF

Date: Saturday 28th January 2023  
Saturday 4th February 2023

Time: 2:30pm - 3:30pm

Cost: Free for families in Bedfordshire  
and Milton Keynes

#### Additional Info:

- Please arrive 15 minutes before the session to change.
- Children must be supervised by a Parent/Carer at all times.
- Parents/Carers must be in the pool with their child/ren.

For ages  
3-12 years



#### Book Now



[enquiries@autismbeds.org](mailto:enquiries@autismbeds.org)



01234 214871 (general enquiries)



# Family activities

## CHILDREN'S SERVICES

### EXCLUSIVE GYM PLAY SESSION FEBRUARY HALF TERM

Salto Gymnastics Centre  
98 Camford Way, Luton, LU3 3AN

Date: Wednesday 15th February 2023

Time: 12.30pm - 2.00pm

Cost: Free for families in Bedfordshire  
and Milton Keynes

#### IMPORTANT INFORMATION:

- Children must be supervised 1:1 at all times. Additional adults must attend if you have 2+ children to ensure 1:1 ration.
- Only 1 trampoline is available and the others are off limits for safety as they do not have inflatable sides. An Autism Beds staff member will oversee this with a visual timer.
- Other activities available include giant inflatable slide, foam pit, balance beams, spring boards, soft play apparatus and more!

For ages  
5-12 years



Book Now



[enquiries@autismbeds.org](mailto:enquiries@autismbeds.org)



01234 214871 (general enquiries)



## CHILDREN'S SERVICES

### MUSIC WORKSHOP 6 WEEKS



King House - 6 George Street West, Luton LU1 2DZ

Date: Tuesdays  
11th, 18th, 25th April 2023  
2nd, 9th, 16th May 2023

Time: 5.30pm - 7.30pm

Cost: £10 for members, £15.00 non-members  
for all 6 weeks

Content: Music making, exploring sound with a  
variety of instruments and collaborative singing

#### Additional Information:

- The venue has NO lift facilities so all visitors must be able to use the stairs.
- Parents/Carers MUST stay onsite during the session.
- For ages 7-12 years old who can follow instructions and have lower support needs.
- Parking Information: There is a Pay & Display machine on the roadside OR There is a NCP on Regent Street - 2-minute walk from the building.



Working in Partnership with

LifewithArt

Book Now



[enquiries@autismbeds.org](mailto:enquiries@autismbeds.org)



01234 214871 (general enquiries)



# Family activities

## CHILDREN'S SERVICES

### MULTI-SPORTS COURSE

#### 5 WEEKS

Castle Newnham School (Sports Hall)  
Pollhill Avenue, Bedford MK41 9DT

Date: Thursdays  
12th, 19th, 26th January 2023  
2nd, 9th, February 2023

Time: 4.45pm - 5.45pm

Cost: £15.00 per child (AB members)  
£20.00 per child (non AB members)

Enjoy a range of sports activities across 5 sessions in.  
Be active and have fun doing it!

For ages  
10-17 years



Working in partnership with



#### Book Now



[enquiries@autismbeds.org](mailto:enquiries@autismbeds.org)



01234 214871 (general enquiries)



## CHILDREN'S SERVICES

### EXCLUSIVE GYM PLAY SESSION

#### 2 SESSIONS

MK Springers Gymnastics Centre  
16 Carters Lane, Kiln Farm, Milton Keynes, MK11 3ES

Date: Sunday 5th and 19th March 2023

Time: 2pm - 3.30pm

Cost: Free for Families in Bedfordshire  
and Milton Keynes

Children must be supervised  
at all times by Parents/Carers

For ages  
3-12 years



#### Book Now



[enquiries@autismbeds.org](mailto:enquiries@autismbeds.org)



01234 214871 (general enquiries)



MK Springers

LIVE LOVE LEARN #TEAMPEAKE



# Family activities



## FEBRUARY 2023 HALF TERM ACTIVITIES

### Monday 13th - John Bunyan Soft Play

Venue: John Bunyan Sports & Fitness, Mile Road, Bedford, MK42 9TS

Time: 13:30 - 15:00

Cost: FREE for all Bedfordshire & MK families

Children must be supervised by parent/carer at all times.



### Tuesday 14th - Exclusive Swim Session

Venue: Lea Manor, Northwell Drive, Luton, LU3 3TL

Time: 12:45 - 13:45 or 14:00 - 15:00

Cost: FREE for all Bedfordshire & MK families

Please arrive 15 minutes before your session. Parents/Carers must be in the pool with their children.

### Wednesday 15th - Salto Gym Play Session

Venue: Salto Gymnastics Centre, 98 Camford Way, Luton, LU3 3AN

Time: 12:30 - 14:00

Cost: FREE for all Bedfordshire & MK families

Children must be supervised 1-1 at all times, for families with 2+ children, additional adults must attend



### Thursday 16th - Futures Fun Factory

Venue: Futures House, The Moakes, Luton, LU3 3QB

Time: 09:30 - 11am

Cost: £4.00 per child (AB members), £5.00 per child (non AB members) Under 1's go free, siblings welcome

Children must be supervised by parent/carer at all times.

### Friday 17th - MK Springers Gymnastics Centre

Venue: 16 Carters Lane, Kiln Farm, Milton Keynes, MK11 3ES

Time: 12:15 - 13:45

Cost: FREE for all Bedfordshire & MK families

Children must be supervised by parent/carer at all times.



For all activities, parents will be fully responsible for their children at all times

**Limited spaces book now on 01234 214871**  
**email: [enquiries@autismbeds.org](mailto:enquiries@autismbeds.org)**

Autism Bedfordshire is a Company Limited by Guarantee. Registered in England No. 04632497  
Registered Office: 1 Hammond Road, Bedford MK41 0UD

LIVE LOVE LEARN #TEAMPEAKE

# Christmas Jumper Day 2022



LIVE LOVE LEARN #TEAMPEAKE



# FUNDRAISING

WE RAISED

£604.85

FOR CHILDREN IN NEED!



The year 8 young leaders raised £592

This money will be used to buy three new picnic benches.

Thank you to Mrs Jeffs for helping year 8 organise the movie nights.

# KEY DATES

**04.01.23**

Term starts

**16.01.23, 18.01.23 and 24.01.23**

Parent subject consultation evening

**07.02.23-10.02.23**

Practice SATS papers

**13.02.23-17.02.23**

Half term

**17.03.23**

Comic Relief

**20.03.23-24.03.23**

Yr 8 French trip

**27.03.23-30.03.23**

School production week

**31.03.23**

Term ends





# Follow The Star THE GREAT INVITATION



Christmas is a time of remarkable generosity.

God gave the most generous gift of all when he sent Jesus to us as a baby.



**St Andrew's Church**  
**Christmas events**  
**All are most welcome to everything! ☐**

**Wednesday 14 December 7:30 pm**  
Carols for Remembrance, followed by refreshments in Chapter House

**Saturday 17 December 10:30 am to 12:30 pm**  
Nativity Tableaux, Market Square.

**Sunday 18 December 6:00 pm**  
Service of Nine Lessons and Carols

**Tuesday 20 December 6:00 pm**  
"Carols on the Lawn", to include mulled wine, and seasonal refreshments

**Saturday 24 December Christmas Eve 6:00 pm**  
Crib Service

**Saturday 24 December Christmas Eve 11:30 pm**  
Midnight Mass

**Christmas Day 25 December 10:00 am**  
Parish Communion

**Sunday 8 January 8:00 am**  
Epiphany Holy Communion (Order Two Traditional Worship)

**Sunday 8 January 10:00 am**  
Epiphany Family Communion

**Sunday 29 January 3:00 pm**  
Christingle

 45 Shortmead St, Biggleswade SG18 0AT



## FOLLOW ... GRATEFULLY

Pray for those people who have touched and transformed your life by just being who they are.



LIVE LOVE LEARN #TEAMPEAKE





## FOLLOW ... WITH CREATION

Go for a walk and look for natural beauty around you - holly, pine cones, fir trees.

Take time to notice the textures and colours.

