



Topic: Dynamic landscapes

Year: 8

NC Strand: Human and Physical, fieldwork

What should I already know?

I should be able to name and locate a range of human and physical features in the UK. I should also be aware of economic, environmental, social and political impacts of events.

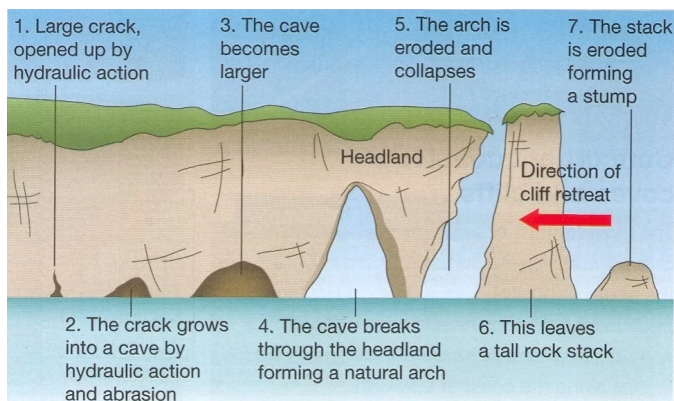
Dynamic Landscapes: Big questions

<p>What is weathering and erosion? This lesson introduces us to the differences between weathering and erosion.</p>	<p>How does the sea shape the coast? We will learn about processes and landforms.</p>	<p>What problems are caused by erosion? We will investigate the different sea defences and Happisburgh.</p>
<p>Fieldwork - Hunstanton During this educational visit we will experience the impacts of erosion and coastal management.</p>	<p>How do water and ice shape the land? Our chance to compare and contrast water and ice on land.</p>	<p>How are our landscapes so dynamic? We will bring our knowledge together to determine how dynamic the landscapes of Britain are.</p>

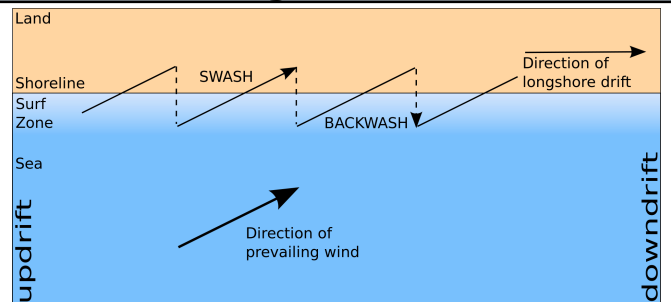
Vocabulary

Erosion	The process of wearing something away.
Attrition	When two pebbles collide in waves.
Abrasion	When a pebble is thrown at a cliff by the wave.
Hydraulic Action	When water is forced into cracks in a cliff.
Solution	When acids in the water erode the cliff.
Longshore Drift	The movement of material along the beach by waves.
Swash	The diagonal movement of a wave up a beach.
Backwash	When gravity drags the water back into the sea.
Groyne	A barrier or low wall built out into the sea to control erosion and drifting.
Sea Wall	A barrier built on land to protect cliffs from the sea.
Revetment	A sloping barrier designed to break up wave energy.
Breakwater	A barrier built out at sea parallel to the coast.
Rip Rap	Boulders placed on the coast to break up wave energy.
Cliff Drainage	Pipes which drain water out of a cliff.
Slumping	Soil which slips down a cliff.

Caves Arches Stacks and Stumps diagram



Longshore Drift





Topic: Dynamic landscapes

Year: 8

NC Strand: Human and Physical, fieldwork

Norfolk Coastline map



About Happisburgh

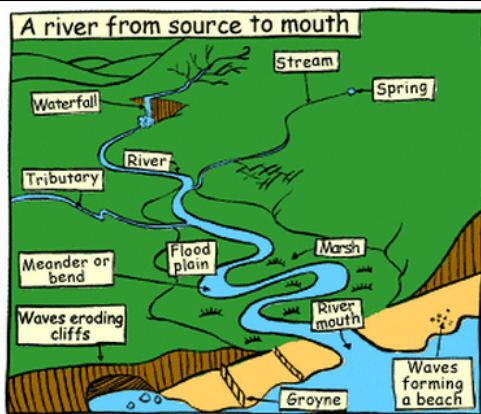
Coastal erosion at Happisburgh, Norfolk

Happisburgh (Norfolk's North Sea coast) is a village with a population of 1400 people in about 600 houses. The village contains a notable stone church dating from the 14th century, an impressive manor house, listed buildings and a famous red and white striped lighthouse.

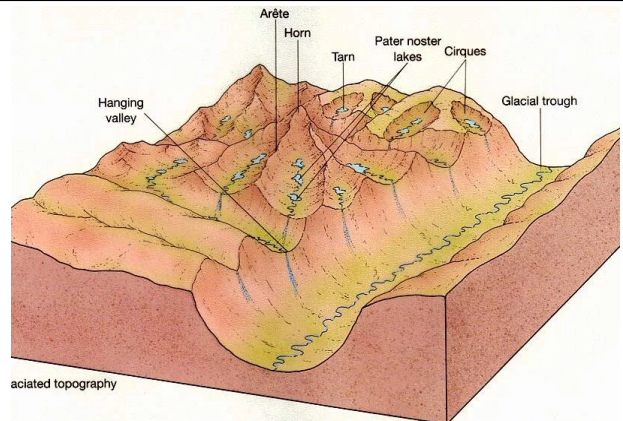
Although now a coastal village, Happisburgh was once some distance from the sea, parted from the coast by the parish of Whimpwell, long since eroded away. Historic records indicate that over 250 m of land were lost between 1600 and 1850.

Coastal defences built at Happisburgh have slowed down the rate of retreat. However, large sections are now in disrepair. Agriculture and tourism contribute significantly to the economy of the village.

Course of a river



Glacial valley diagram



Reading/ media suggestions

<https://www.dkfindout.com/uk/earth/coasts/>

Coast - BBC

Horrible Geography - Cracking Coasts, Freaky Peaks and Raging Rivers

Rivers and Mountains by Joanna Brindle