



What should I already know?

I know where the continents are and the locations of several countries within each continent. I am aware of the Geography of places like the UK and St. Lucia. I am also aware of the different climates around the world as well as the different habitats/ environments people live in. I know how economic activity operates in the UK but also the impact weather can have on places. I should be generally aware that there are wealthier and poorer countries in the world, and may be able to suggest some reasons for these differences in wealth.

Prisoners of Geography: Big questions

What are prisoners of geography?

This lesson will give me a definition of the term prisoners of geography.

What are the problems of landlocked countries?

I will learn the challenges faced by landlocked countries.

How can human and physical geography affect development?

These lessons will give me examples of different barriers for development.

Case study enquiries

We will look at examples of places in North America, South America, Russia, the Middle East and Japan.

Are we prisoners of geography?

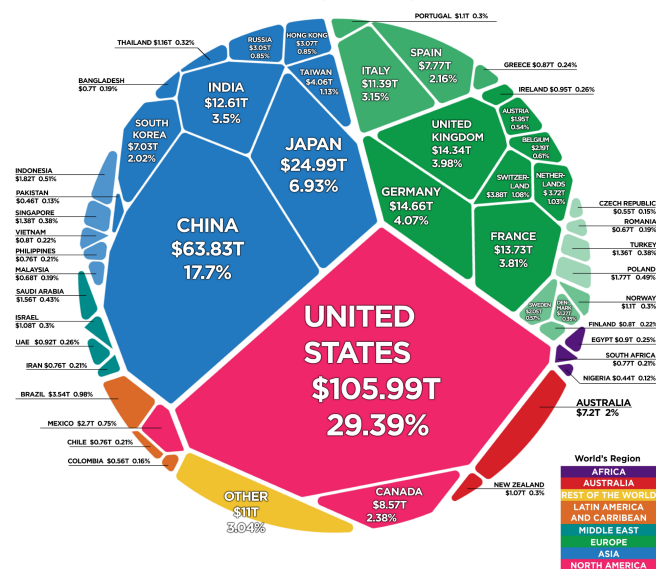
This final assessment will give us the opportunity to answer the question using the knowledge we have acquired throughout this topic.

Map of North and South America



Distribution of wealth

The Distribution of the World's Wealth
Total Wealth by Country in 2019



Article and Sources:
<https://howmuch.net/articles/distribution-worlds-wealth-2019>
 Credit: Suisse - <https://credit-suisse.com>

howmuch.net

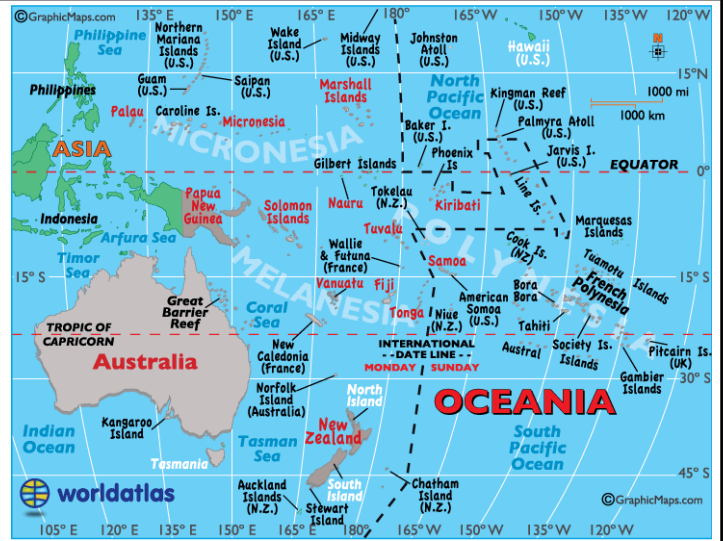




Map of Russia/ Asia



Map of Oceania



Vocabulary

Development	The standard of living and its quality of life of its human inhabitants.
Inhabitant	One of the people who live in a particular place.
Population	A group of people living in the same area.
Development indicator	To illustrate progress of a country in meeting a range of economic, social, and environmental goals.
H.I.C	High Income Country
L.I.C	Low Income Country
Wealth	is the value of all the resources that are owned by an individual or society.
Distribute	The way something is spread out or arranged over a geographic area.
Quality of Life	The conditions within which people seek happiness.
Human Development Index	Mix of indicators that show life expectancy, knowledge (adult literacy and education) and standard of living (GDP per capita).
Trickle-down	Financial benefits to businesses and rich individuals will indirectly benefit the poor population.
Financial	The wealth of an individual.
Disease	An illness that affects a structure/ function and is not a result of injury.
Famine	Extreme unavailability of food.
Corruption	Dishonest actions by those in power.
Conflict	A serious disagreement or clash between groups of people.
Slum	Overcrowded urban street or district inhabited by very poor people.
Urban	A town or city.
Employment	Paid work.

Reading/ media lists

- Prisoners of Geography* by Tim Marshall
- The Power of Geography* by Tim Marshall