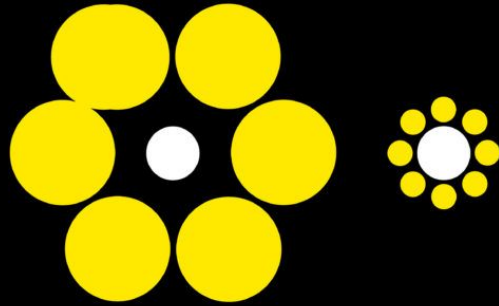


dare to be
different



CHOOSE
DRAMA

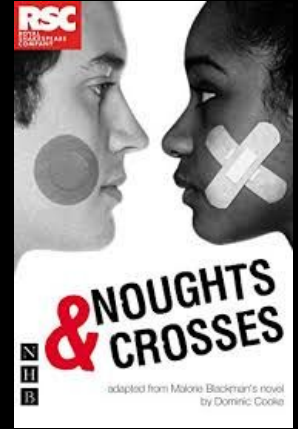
What will I study at GCSE in Drama



Devising theatre in the style of a practitioner.



Exploring text in performance



Study of a set text



Experiencing live theatre

What Can You expect?

Students will be encouraged to come to terms with themselves and the world in which they live; to develop intellectually, emotionally and imaginatively. GCSE Drama is a diverse, stimulating and engaging course, which has far reaching benefits to generate valuable communication, analytical and evaluative skills, whilst also aiming to improve student's confidence in performance work.

You will learn how to: Create drama; including all the acting and staging skills that are needed to bring a piece of drama to life, cooperate with others, listening and accepting the contribution of your peers, create a character and play this character in a performance, evaluate and analyse performance work, express yourself in an active and exciting way, interpret plays in a creative manner, prepare for a practical and written examination.



What are the exams/assessments like?

Component 1: Understanding drama

What's assessed

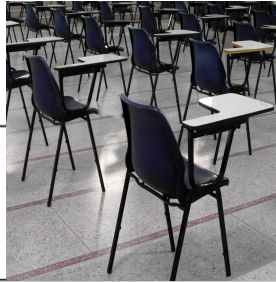
- Knowledge and understanding of drama and theatre
- Study of one set play from a choice of six
- Analysis and evaluation of the work of live theatre makers

How it's assessed

- Written exam: 1 hour and 45 minutes
- Open book
- 80 marks
- 40% of GCSE

Questions

- Section A: multiple choice (4 marks)
- Section B: four questions on a given extract from the set play chosen (44 marks)
- Section C: one question (from a choice) on the work of theatre makers in a single live theatre production (32 marks)



Component 2: Devising drama (practical)

What's assessed

- Process of creating devised drama
- Performance of devised drama (students may contribute as performer or designer)
- Analysis and evaluation of own work

How it's assessed

- Devising log (60 marks)
- Devised performance (20 marks)
- 80 marks in total
- 40% of GCSE

This component is marked by teachers and moderated by AQA.

Component 3: Texts in practice (practical)

What's assessed

- Performance of two extracts from one play (students may contribute as performer or designer)

Free choice of play but it must contrast with the set play chosen for Component 1

How it's assessed

- Performance of Extract 1 (20 marks) **and** Extract 2 (20 marks)
- 40 marks in total
- 20% of GCSE

This component is marked by AQA.



What qualities do you need?

- You need to have an interest in performance and in the performing arts.
- You need to work well in a group with a wide range of other students.
- You need to be committed and prepared to work hard.
- You need to be prepared to experiment with various forms and techniques.
- You need to be good at meeting deadlines and working to time frames.
- You must be able to write extensively about texts, in an essay style. This is worth 40% of the exam - it is not all practical - there's lots of writing!