



# Monthly Mail

Dear parent/carers,

I hope that you have had a good summer holiday. I would like to welcome our pupils who are in Year 7 and their parents and carers to our wonderful school community.



I also would like to introduce the new staff who have made fantastic start to this academic year:

Mr. Keegan (Head of History)  
Mrs Armitage (2<sup>nd</sup> in the MFL Department)  
Kirsty Postin (Cover Supervisor)  
Chloe Rollinson and Megan Cox (Lay Chaplains)

I would like take this opportunity to emphasise how important it is that parents and carers work in partnership with the school to ensure that your child is as successful as they can possibly be. In order to do that we need you to read this letter carefully and take note of the key messages and dates.

## The Friday Letter becomes Monthly Mail

In previous years we used to publish a letter every Friday that was given to pupils to take home to their parents/carers. However, this term we are going to trial an alternative system called **Monthly Mail**. This will be more environmentally friendly and more cost effective as it means that we do not need to print letters every week.

The Monthly Mail is very useful as it will contain the most-up-to-date information regarding the school such as informing you about up and coming events as well as informing you about events

that have recently taken place. We also celebrate the successes within the school and reward our pupils with the Star of the Month. Don't forget to ask your child for this letter. The Monthly Mail will also be posted in the latest news section on the homepage of our school website.

Pupils from the school council decided last year to make changes to the 'Star of the Week'. Therefore we have decided to continue with the 'Star of the Week'. However this will not be printed and sent home but it will be posted on the school website and emailed directly to all pupils in the school.

### Parental Contact with the School

#### **Head of Year**

If you have an issue regarding your child, please contact your child's Head of Year. This could be to do with issues such as bullying, academic progress, etc.

Year	Head of Year	Email address
Year 7	Miss Kelly	<a href="mailto:skelly@cardinalwiseman.net">skelly@cardinalwiseman.net</a>
Year 8	Miss Monk	<a href="mailto:lmonk@cardinalwiseman.net">lmonk@cardinalwiseman.net</a>
Year 9	Mrs Morgan	<a href="mailto:mmorgan@cardinalwiseman.net">mmorgan@cardinalwiseman.net</a>
Year 10	Mrs Poxon	<a href="mailto:spoxon@cardinalwiseman.net">spoxon@cardinalwiseman.net</a>
Year 11	Mrs Meersand	<a href="mailto:smeersand@cardinalwiseman.net">smeersand@cardinalwiseman.net</a>

If you have a concern regarding behaviour and you feel that you wish to take it further than your child's head of year then contact, Dr Beavan: [lbeavan@cardinalwiseman.net](mailto:lbeavan@cardinalwiseman.net)

If the concern regards something to do with teaching and learning contact Miss Edwards (Deputy Head): [cedwards@cardinalwiseman.net](mailto:cedwards@cardinalwiseman.net)

If you have a pastoral concern regarding the welfare of your child, behaviour or attendance then contact Mr Swanwick (Deputy Head): [rswanwick@cardinalwiseman.net](mailto:rswanwick@cardinalwiseman.net)

If you feel that you have not had a satisfactory answer or response to your concern then contact the Head teacher: [cstewardson@cardinalwiseman.net](mailto:cstewardson@cardinalwiseman.net)

#### **Drop-In Sessions**

Every morning from 8:50 until 9:45am we have an open parental drop-in where you can tell a member of staff about your concerns or ask questions of any kind and they will pass on your query to the appropriate member of staff who will contact you as soon as possible.

#### **Safeguarding Team**

Safeguarding is about promoting the welfare of, and the protection from harm of, all children aged 0 -18 years old.

All of the staff at Cardinal Wiseman are trained to deal with concerns in regards to the welfare of the children we serve. However, we have a specialist team of staff who are trained to deal with highly sensitive safeguarding issues. They are known as Designated Safeguarding Lead (DSL). These members of staff are as follows:

Head teacher                      Mrs Stewardson                      [cstewardson@cardinalwiseman.net](mailto:cstewardson@cardinalwiseman.net)

Deputy Head	Mr Swanwick	<a href="mailto:rswanwick@cardinalwiseman.net">rswanwick@cardinalwiseman.net</a>
Assistant Head	Dr Beavan	<a href="mailto:lbeavan@cardinalwiseman.net">lbeavan@cardinalwiseman.net</a>
Pastoral manager	Ms Short	<a href="mailto:eshort@cardinalwiseman.net">eshort@cardinalwiseman.net</a>
Family support worker	Mrs Jenks	<a href="mailto:djenks@cardinalwiseman.net">djenks@cardinalwiseman.net</a>

### **Timings of the school day**

#### **Key Stage 3 - Years 7 and 8**

<b>8:45</b>	Warning bell
<b>8:50</b>	Period 1 (am registration)
<b>9:40</b>	Period 2
<b>10.30</b>	Period 3 DEAR / TUTOR / Angelus – whole school prayer
<b>11:00</b>	Break
<b>11:15</b>	Period 4
<b>12:05</b>	Period 5
<b>12:55</b>	Lunch for Years 7 & 8
<b>1:30</b>	Period 6
<b>2:20</b>	Period 7
<b>3:10</b>	End of school day / Enrichment Activities

#### **Key Stage 4 - Years 9, 10 and 11**

<b>8:45</b>	Warning bell
<b>8:50</b>	Period 1 (am registration)
<b>9:40</b>	Period 2
<b>10.30</b>	Period 3 DEAR / TUTOR / Angelus – whole school prayer
<b>11:00</b>	Break
<b>11:15</b>	Period 4
<b>12:05</b>	Period 5
<b>12:55</b>	Period 6
<b>1:45</b>	Lunch for Years 9, 10 and 11
<b>2:20</b>	Period 7
<b>3:10</b>	End of school day / Enrichment Activities

Please ensure that your child arrives to school by 8.45. The first 10 minutes of a lesson are often the key to understanding of the whole lesson. Therefore excellent punctuality is really important.

### **Important Dates 2015 – 2016**

Please note that the full school calendar can be found on the school website by going to [www.cardinalwiseman.net](http://www.cardinalwiseman.net) – School Info – School Calendar. Below are some of the key dates throughout the year. Please note that the dates can be amended – parents/carers will be informed about any changes through the Monthly Mail and/or via a text message/email.

AUTUMN TERM	SPRING TERM	SUMMER TERM
-------------	-------------	-------------

Fri 4 <sup>th</sup> Sept (Year 7 only)	Mon 4 <sup>th</sup> Jan to Fri 12 <sup>th</sup> Feb	Mon 11 <sup>th</sup> Apr to Fri 27 <sup>th</sup> May
Mon 7 <sup>th</sup> Sept (all pupils) to	<i>Half Term</i>	<i>Half Term</i>
Fri 23 <sup>rd</sup> Oct	Mon 22 <sup>nd</sup> Feb to Thu 24 <sup>th</sup> Mar	Mon 6 <sup>th</sup> June to Fri 22 <sup>nd</sup> July
<i>Half Term</i>		
Mon 2 <sup>nd</sup> Nov to Fri 18 <sup>th</sup> Dec		

### Teacher Training Days

- Friday 16<sup>th</sup> October – Safeguarding
- Friday 5<sup>th</sup> April
- Monday 11<sup>th</sup> April
- Friday 1<sup>st</sup> July

### Pupils Assessment and Parents' Evenings

Parents and carers are expected to attend Parents' Evenings as clearly stated in the Home School Contract. Following an assessment week staff will mark the assessment/test and input the data which will then be shared with parents/carers.

Year 7	
Week beginning 28 <sup>th</sup> Sept	Base line assessments
<b>Thur 15<sup>th</sup> Oct 5.30-7pm</b>	<b>Settling-In Evening</b>
Week beginning 18 <sup>th</sup> Jan	Year 7 assessment week
Week beginning 25 <sup>th</sup> April	Year 7 assessment week
<b>12<sup>th</sup> May 4.30 – 7pm</b>	<b>Year 7 Parents' Evening</b>

Year 8	
Week beginning 30 <sup>th</sup> Nov	Year 8 assessment week
Week beginning 29 <sup>th</sup> Feb	Year 8 assessment week
<b>17<sup>th</sup> March 4.30 – 7pm</b>	<b>Year 8 Parents' Evening</b>
Week beginning 9 <sup>th</sup> May	Year 8 assessment week

Year 9	
Week beginning 16 <sup>th</sup> Nov	Year 9 assessment week
<b>3<sup>rd</sup> December 4.30 – 7pm</b>	<b>Year 9 Parents' Evening</b>
Week beginning 22 <sup>nd</sup> Feb	Year 9 assessment week
Week beginning 14 <sup>th</sup> April	Year 9 assessment week

Year 10	
---------	--

Week beginning 2 <sup>nd</sup> Nov	Year 10 assessment week
Week beginning 1 <sup>st</sup> Feb	Year 10 assessment week
Week beginning 28 <sup>th</sup> June	Year 10 Exam Week
<b>14<sup>th</sup> July 4.30 - 7pm</b>	<b>Year 10 Parents' Evening</b>

Year 11	
<b>Thursday 11<sup>th</sup> Sept 5.30-7pm</b>	<b>Year 11 Information Evening for Parents/Carers</b>
Week beginning 12 <sup>th</sup> Oct	Year 11 Exam Week 1
Week beginning 4 <sup>th</sup> Jan	Year 11 Mock Exam Week
<b>21<sup>st</sup> January 4.30 – 7pm</b>	<b>Year 11 Parents' Evening</b>
Week beginning 14 <sup>th</sup> March	Year 11 Mock Exam Week 2

### Religious Events

- Friday 9<sup>th</sup> October - Blessed John Henry Newman's Feast Day
- Friday 25<sup>th</sup> December – Christmas Day
- Wednesday 6<sup>th</sup> January – Feast of Epiphany
- 25<sup>th</sup> March – Good Friday
- 27<sup>th</sup> March – Easter Sunday
- Saturday 16<sup>th</sup> April - St Bernadette's Feast Day
- Wednesday 29<sup>th</sup> June – Cardinal Wiseman Day / St Peter and Paul Holyday

### Homework

#### Years 7 and 8

	Mon	Tue		Wed	Thu	Fri
<b>Year 7</b>	English All classes	Spanish 7Ne	Science 7Be	Maths All classes	Science 7Bo, 7Ne, 7Te	Spanish 7Be, 7Bo, 7Te
<b>Year 8</b>	English All classes	Science All classes		Spanish 8Be	Maths All classes	Spanish 8Bo, 8Ne, 8Te

Important information:

- ✓ Approximately 30 mins homework per week for Maths, English, Science and Spanish.
- ✓ Independent Learning Projects (ILP)  
An ILP is a large scale piece of work that lasts for 3 weeks. ILP's are set in the following subjects: Geography, History, RE, Drama, Computing and Music/Art/Food Tech will be set on a rotation. Students should spend approximately 5-6 hours in total on their project (approx. 20 mins per day) on their ILP. See timetables overleaf.
- ✓ Additional homework - teachers may set small homework tasks where necessary.

### Year 9

Students will be set approximately 40 mins homework per subject per week with the exception of MAG subjects. Due to MAG subjects being completed in 1 year, they have more lessons per week than any other subject. Therefore pupils are required to do between 90min and 2 hrs per week in total.

The nature of homework tasks will vary from one subject to another, however it is usually set for students:

- ✓ Summary of Learning - to revise and consolidate work that has been covered in class – this must be done in the back of their books.
- ✓ to rehearse/practise in preparation for a performance e.g. Music or Drama performance
- ✓ to develop a piece of work e.g. Art

Pupils will be set homework on the following days.

Mon	Tue	Wed	Thu	Fri
Science	English	RE	Maths	<b>MAG Subjects</b> Media Dance Drama Child Dev. Sport
Opt 1  Geography History Spanish		<b>MAG Subjects</b> Media Dance Drama Child Dev. Sport		

### Years 10 and 11

#### Learning Journals

Pupils will be given a Learning Journal. This specially created workbook has been designed for pupils to write their homework in one place and will be a valuable revision resource in preparation for their exams.

Pupils are expected to spend approximately 45 minutes per week, per subject summarising their learning from their recent lessons. A timetable will not be generated. This homework can be set on any day during the week, whenever it is most appropriate.

**Additional homework** - teachers may set additional homework tasks where necessary such as developing performance skills in Dance, Music and Drama etc.

---

#### How Can Parents/Carers Help Their Child?

- ✓ Encourage your child to do their homework/revise – use rewards as an incentive.
- ✓ Wherever possible, give your child a quiet space to work/concentrate
- ✓ Be interested in what they are doing – ask questions “Can I help you with that?”, “Explain to me what photosynthesis is” etc. Test them on key vocabulary.
- ✓ Little and often is the key to success – this is called ‘chunking’. Most students cannot revise effectively for more than 40 minutes in one session.
- ✓ Let them have breaks of at least 10 or 15 minutes between each session. Don’t let a 15 minute break last all evening!

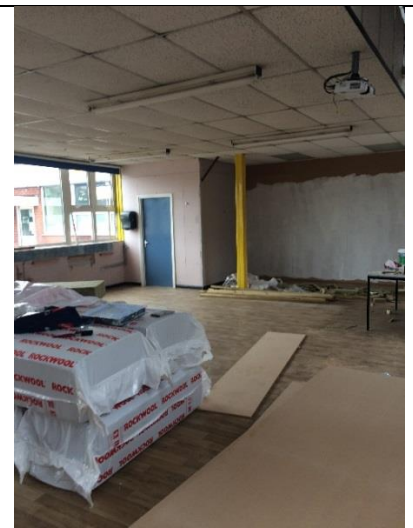


- ✓ Help your child to make homework/revision a habit...the more they do it, the more they'll get used to doing it and the less of a chore it will become!
- ✓ Make it part of their daily routine. Create a revision timetable/planner with your child.
- ✓ Don't revise or do all of your homework the same evening. Variety is the spice of life!
- ✓ Start today!
- ✓
- ✓

**Christmas Fair** there will be a meeting on Mon 21<sup>st</sup> Sept at 7.00 pm in the Community Centre (Newman Room). We are looking for some people who would be prepared to organise and run the Christmas Fair. This would entail giving time for 6-7 weeks before, to sort and store goods, prepare the hall and remain after the fair to do the necessary clearing up. The ladies and gentlemen who have done this for many years are hopeful that some young energetic people will be prepared to take up this essential parish work. Sr Marie



**You  
should  
be  
dancin  
g**



There has been great progress over the last few months with the building of the dance studio. It has been confirmed that the studio will be completed for the Open Evening on the 23<sup>rd</sup> September 2015. We have been lucky to have had such support and hard work put in on this special project. A new ceiling, floor, mirrors and fresh face lift has been put into the room to create a beautiful dance studio for our aspiring dancers. The space has been used by the dance classes and seen by many of our students who are all very excited about the work space. Below are a few images to show how the studio has progressed, and I am sure within the next edition we will be able to include a final finished product image and some special celebrations to come with it.

**Miss Nuttall**

## London Residential

22nd - 24th October. Final payments should be made by 25th September to the school office. There will be a short parents meeting for parents and students attending the residential on Wednesday 7th October 5.30-6.30.



## Year 11 careers fair - Wednesday 16th September

Student Report by Emily Howes

Mrs Meersand and Mrs Biddle kindly organised for us a careers event in which several representatives came from local 6th forms, colleges, apprenticeships, public services and universities. During the careers event, we were able to speak to the different providers and be given an insight into the different aspects of their courses. It gave me an insight into my possible future and helped us to think about the different careers and choices open to me. The event helped me to consider courses and options that I had not really considered before.



## Music Lessons

Learning a musical instrument is something that is hugely rewarding and is proven to have many benefits to a child's educational development. For the small contribution of £10 per term (unless your child is in receipt of free school meals) we offer instrumental lessons on brass, drum kit, guitar, steel pan and woodwind instruments. Students who have these lessons are entered for music medals and graded examinations where possible and several students have progressed on to play in area bands performing at prestige venues such as the Adrian Boult Hall and Symphony Hall. If you would like more information please ask your child to speak to Mr Gardner for a trial lesson or you can email: [musiclessons@cardinalwiseaman.net](mailto:musiclessons@cardinalwiseaman.net)

Singing lessons take place in the music room after school on a Tuesday from 3:10 until 4:00 pm. They are taught by Ms Cooper who many students will know from her work at both Christ the King and St Margaret Mary primary schools. All singers from any year group are welcome to come along and join in our school choir.

Thanks

Mr Gardner (Head of Music)

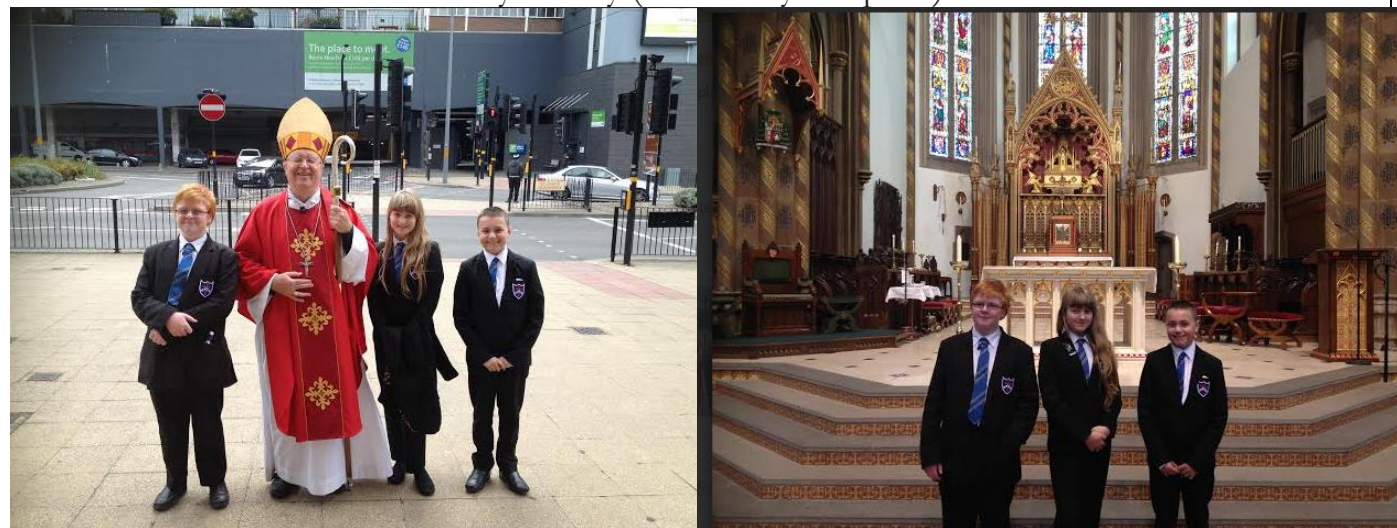
**St Chad's Cathedral**



## Wednesday 16th September 2015

Over 100 people gathered with Bishop William Kenney to celebrate Chaplaincy in our Catholic Secondary Schools. Head Teachers, Lay Chaplains, Priest Chaplain's, Student Chaplaincy Volunteers, governors and staff came together with staff from the Diocesan Education Service and The Kenelm Youth Trust, to celebrate Mass with the Bishop of Birmingham. The Bishop then invited those involved in Chaplaincy to stand so that he could commission them for the coming year of ministry. The celebrations then continued as all present shared lunch together in the Grimshaw room.

Lucy Hurley (Senior Lay Chaplain)



### Dates for your diary

Wednesday 23<sup>rd</sup> September – **Open Evening 6-8pm.**  
Pupils leave school at 12.30pm.

Week beginning 28<sup>th</sup> Sept – **Year 7 base line assessments**

WB 12<sup>th</sup> October – **Year 11 Exam Week**

Thur 15<sup>th</sup> Oct 5.30-7pm – **Year 7 Settling-In Evening**



Yours sincerely,

Christina Stewardson

*It is essential that parents/ carers keep the school informed about any changes to your contact details.*

*Previous editions of the Friday Letter can be found on the school website.*

*The main office hours are from 8am to 4.30pm.*



READ IT!  
WATCH IT!  
THURSDAYS



Science<sup>mo²</sup>

SCIENCE

Club

DANCE/GYM  
MONDAYS



YOUTH ALPHA  
THURSDAYS



AREA BAND

MONDAYS



CHOIR -TUESDAY

The following clubs running. If there is something that you find interesting or want to know more about come and see Mrs Cooney (PE) for more information. If you participate in an afterschool activity in first few weeks you are more likely to continue it as a hobby. This also helps with your studies as it helps relieve any tension that you may have and help you relax. SO GET JOINING.

'There is a solid base of research and best practices clearly showing that quality afterschool and summer learning programs make a positive difference for students, families, schools, and communities.'



SQUASH  
TUESDAYS



TEAM FOOT-  
BALL MON-  
DAYS/  
THURDAY



NETBALL  
TUESDAYS

DRAMA  
THURSDAY  
AFTER HALF  
TERM



ARCHERY  
WEDNESDAY  
GCSE  
PRIORITY

## Cardinal Wiseman



'Enriching activities to expand the minds and open the horizons of young people from all backgrounds'

2015-2016