

# FINAL IDEAS CHEKCLIST

## 1. Self Reflection:

For my final piece I would like to .....

- Explore
- Combine
- Use
- Create

This links to my research because I have .....

## Tick List for your planning pages

- You have presented images that you might want to use for the final piece. (EBI you have a selection to choose from!)
- You have drawn out a minimum of 2 different COMPOSITION LAYOUTS. (EBI if these are detailed and creative)
- You have tested at least 2 different materials or techniques before making a decision
- You have painted/drawn/collaged different colour palettes on your sketches
- Show alternative background ideas
- You have annotated your plans and reviewed each idea. Even when you have found your best idea you will make it even better for the final piece!

Show the examiner all your decisions.

# Assessment Criteria (exam board)

A01 : Developing ideas through investigations, demonstrating critical understanding of sources/research

A02: Refine work by exploring ideas, selecting and experimenting with appropriate media, materials, techniques and processes.

A03: Recording your ideas through drawing, painting, photography, annotations and any other means.

A04: Beginning to personalise development and making links between ideas.

## Things to consider:

- Material
- Backgrounds
- Foreground
- Surface
- Technique and application
- Scale
- Type of paper/board

## Material Choices:

- Paint (watercolour, poster, acrylic, oil)
- Inks (brusho, indian, quink)
- Mixed media
- Collage papers
- Charcoal water
- Pastel
- Pencil/ tinted pencil
- Biro/markers/fineliner
- Printing (monoprint, etching, collogragh, Gelli)
- Sculpture ( cardboard, mod roc, wire)
- Digital work Ipads
- Paper cutting
- Ink & bleaching

Make sure you make connections to your previous ideas and artist research

**The most successful art works and experiments of my project so far are**

- 1)
- 2)
- 3)

**DEVELOPING IDEAS**

**For my final piece I would like to**

- Explore \_\_\_\_\_
- Combine \_\_\_\_\_
- Use \_\_\_\_\_
- Create \_\_\_\_\_

**\_\_\_\_\_**

The artist/research/photography that will inspire this work is \_\_\_\_\_

This will be communicated within the artwork via \_\_\_\_\_



**Idea 1**

(Connect to previous ideas and research)

Draw out the ideas clearly

Review each idea through a short annotation.

**Idea 2**  
(Connect to previous ideas and research)

**Idea 3**  
(Connect to previous ideas and research)

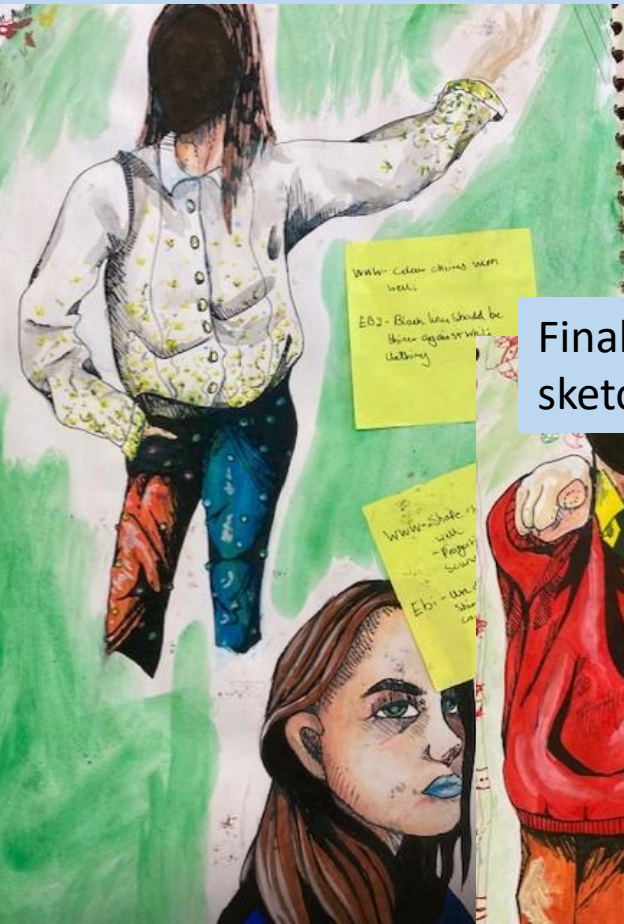
Ensure you have experimented with different compositional layouts materials, techniques, colour palettes and backgrounds.

- Things to consider –
- Art material
  - Composition layout ideas
  - Surface
  - Foreground
  - Background
  - Layers
  - Technique and application
  - Colour palette
  - Scale
  - 2D/3D/Canvas/Board/Found object

**Final Idea**

Even when you have found your best idea you can make it even better for your final piece.  
**HAVE YOU GIVEN ENOUGH DETAIL ON THE FINAL COMPOSITION?**

# Improving your final pages in the sketchbook



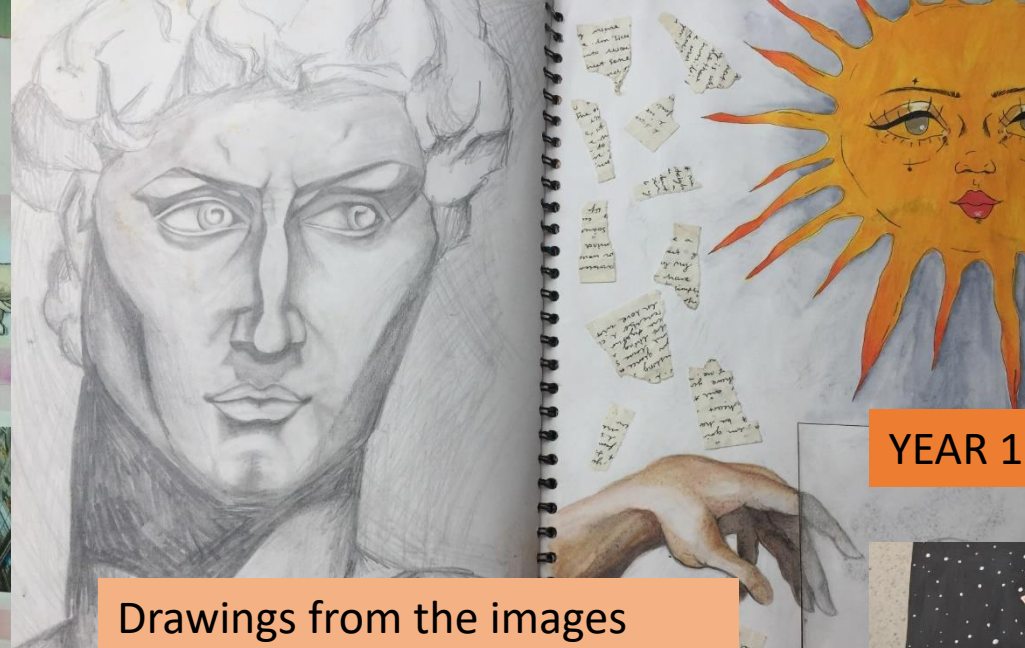
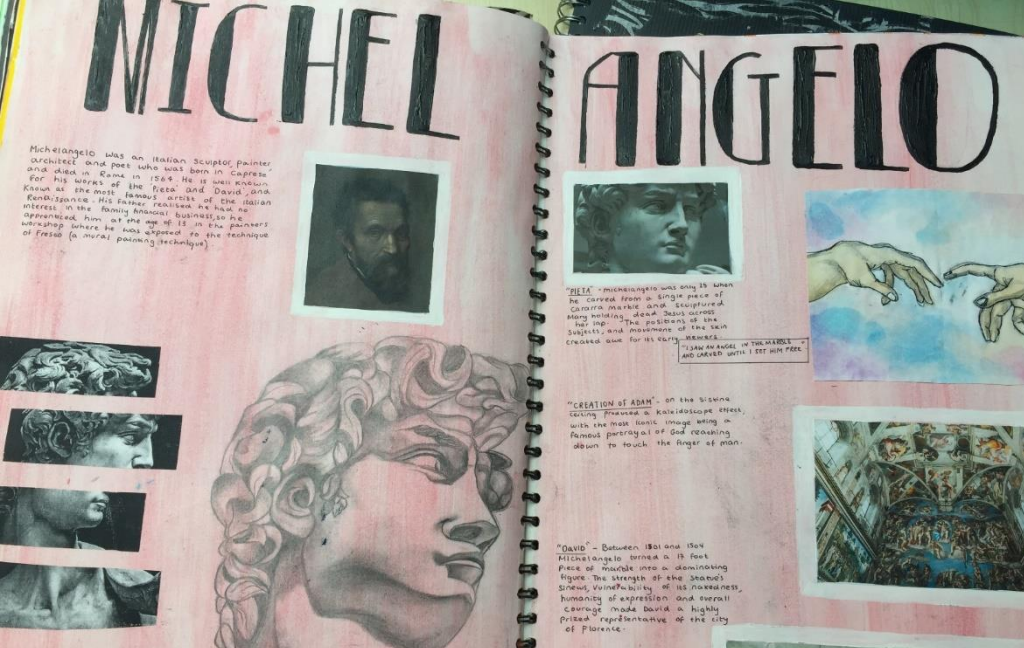
Final Pages in a Year 10 sketchbook



START

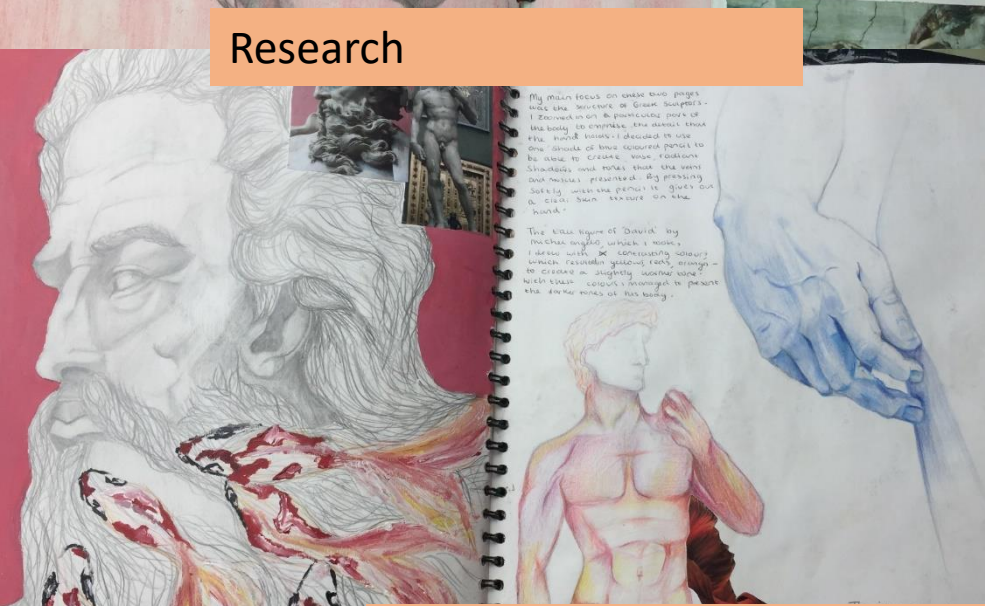
YEAR 10 EXAMPLE





YEAR 11 EXAMPLE

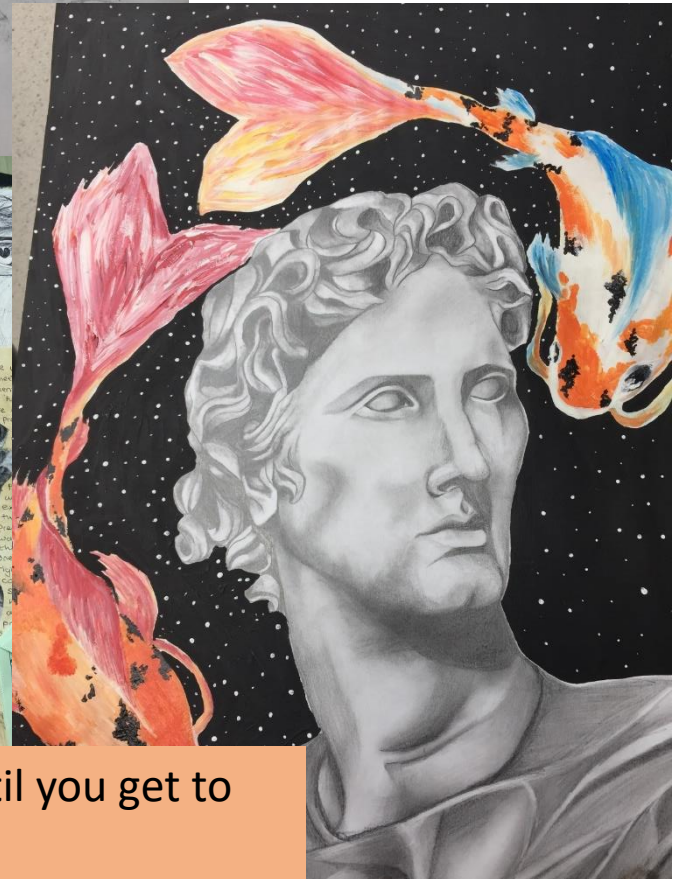
Drawings from the images



Research



Using pencil and paint to creatively blend ideas together



Consider alternatives until you get to the best idea









This part of my final piece  
portrays how deforestation is  
affecting wildlife. I have drawn  
the jaguar with the clown gradually  
losing its appearance over all the  
years to survive and the more are  
being taken away and now, exposed  
I'd face extinction with its tail  
brush that is horrible  
reason for hunters pay an unclear  
amount. The number that is humans  
and accessible animals are predators  
to the destruction.



# FINAL

# PIECE



This part of my piece shows  
a lush green jungle and a  
wild jaguar lying on a log  
in a log. This displays how the  
natural environment should be.  
There are broader details in  
light and all animal life is  
left in peace to thrive. This  
is the ideal environment for  
the jaguar's habitat, including  
the surrounding log set.

This section of my final piece  
depicts what was once a lush  
vegetation and after the land has been  
excavated for farming. All the life  
in the jungle has been destroyed and  
this may lead to some animals, such  
as the jaguar, facing extinction. I  
have represented this through the use  
of jaguars for the jaguar. The effect  
of nature is almost ghost-like. The  
shift from vibrant colors to monochromatic  
displays the melancholic reality of  
deforestation.

