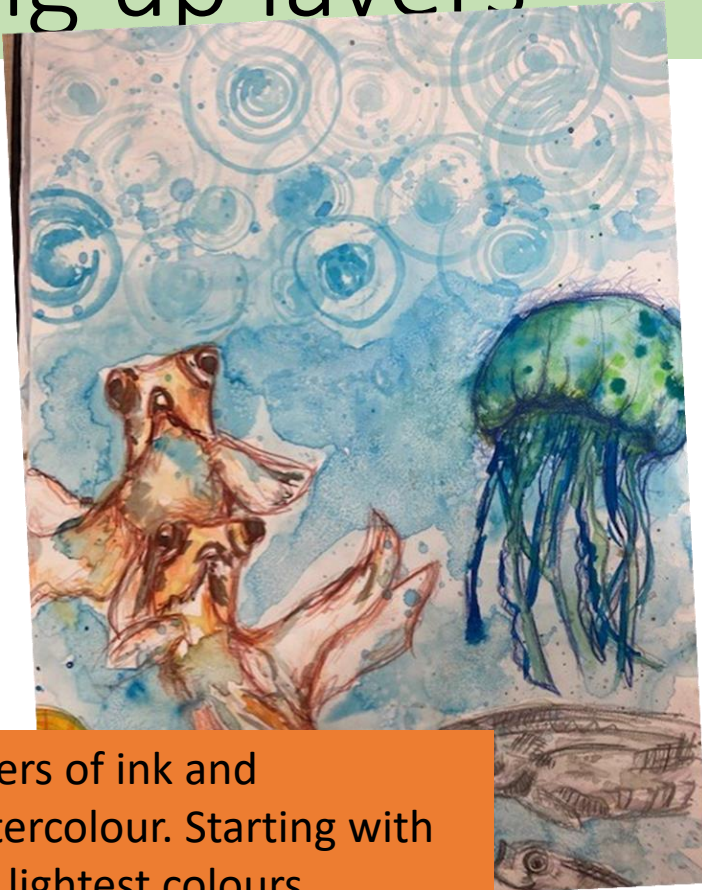


Aim: Applying extra layers of materials to drawings and paintings to create greater depth in observational pieces

# Year 10 examples of building up layers

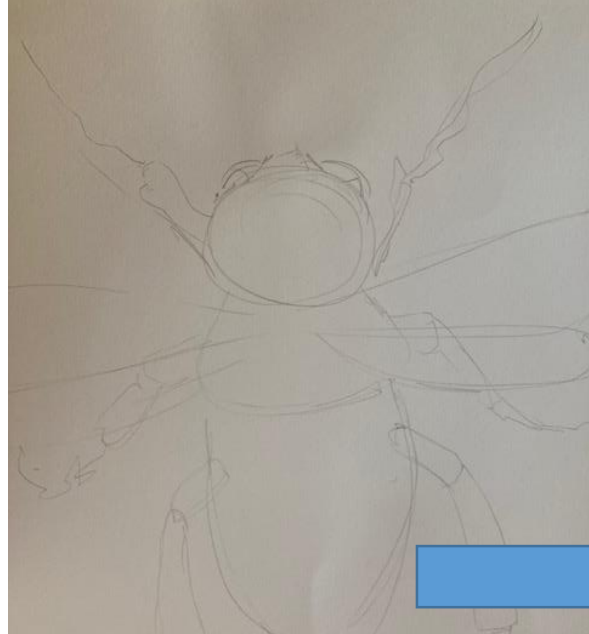


Layers of ink and watercolour. Starting with the lightest colours



Layers of coffee with biro pen on top

Layers of coffee  
Light watercolour  
colour washes with  
darker tone of  
paint on top,  
finished with some  
pen work on top



SKETCH



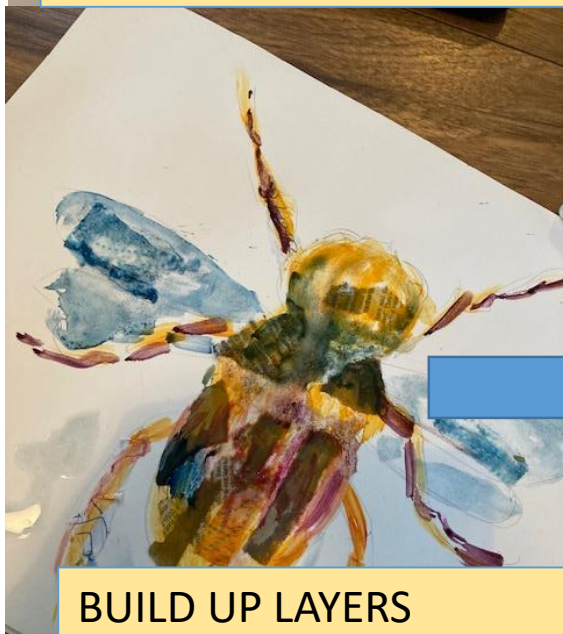
TORN PAPER



TEST YOUR  
CHOSEN COLOUR  
PALETTE



APPLY BASE COLOUR  
LOOSELY



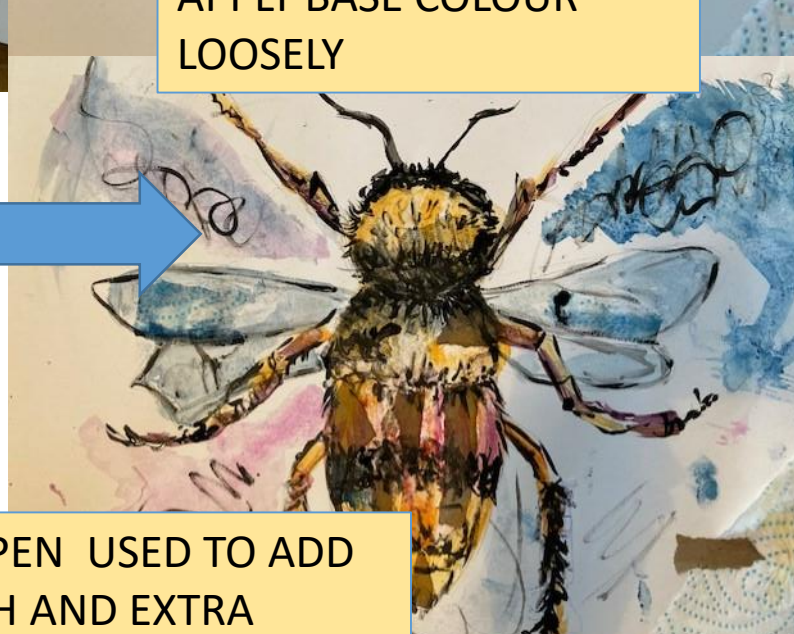
BUILD UP LAYERS



DAB OR DRY



INK/PEN USED TO ADD  
DEPTH AND EXTRA  
MOVEMENT



# GCSE EXAMPLE

