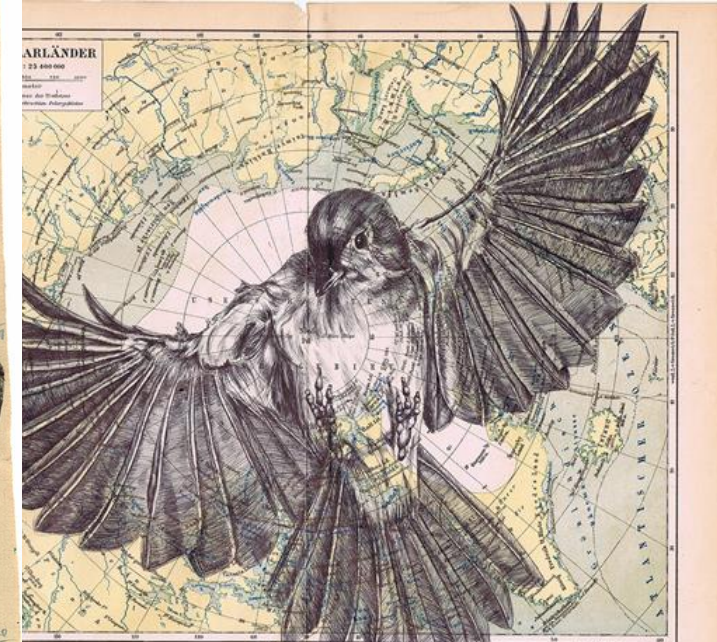


Aim: Enhance Artist Understanding & Capturing finer detail in your work.

To build up a better understanding of your chosen artist, it always helps to explore:

- The artist's website
- Watch videos of the artist creating their work
- Read interviews with the artist. This is useful for understanding how the work is made and why the artist has made certain decisions.



Task 1: Visit Mark Powell's website to have a look at the range of his work.

<https://www.markpowellartist.com/>

Task 2: Watch Powell at work to see how he starts his drawings

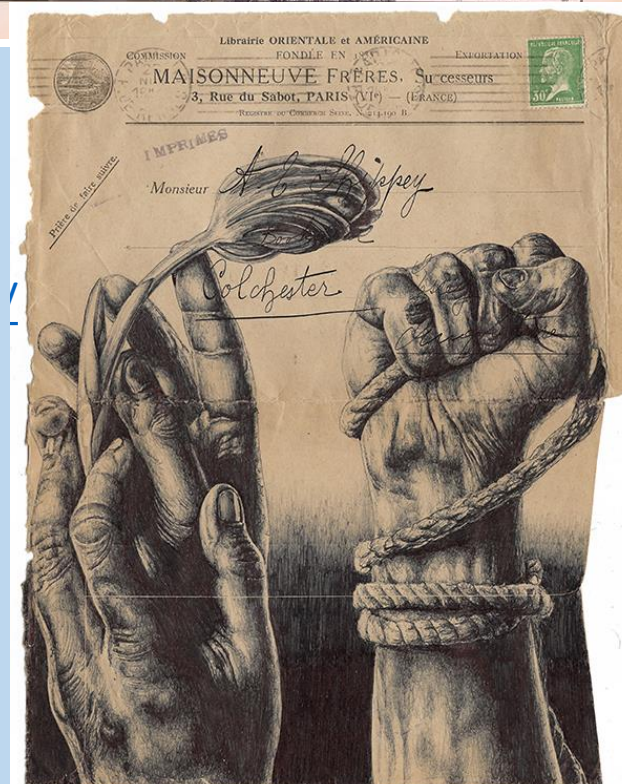
<https://www.youtube.com/watch?app=desktop&v=wIQIzIDsYsE&feature=youtu.be>

<https://www.youtube.com/watch?v=duaiDpIWXQ4>

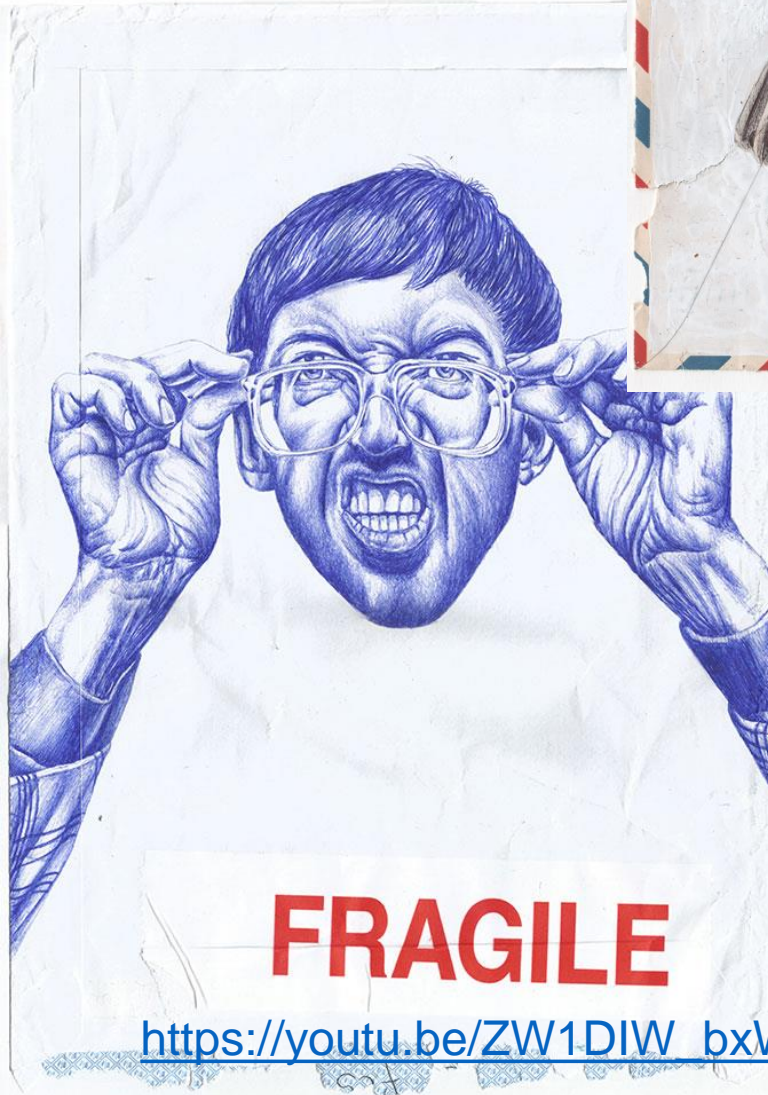
Task 3:

Read Powell's responses about his work

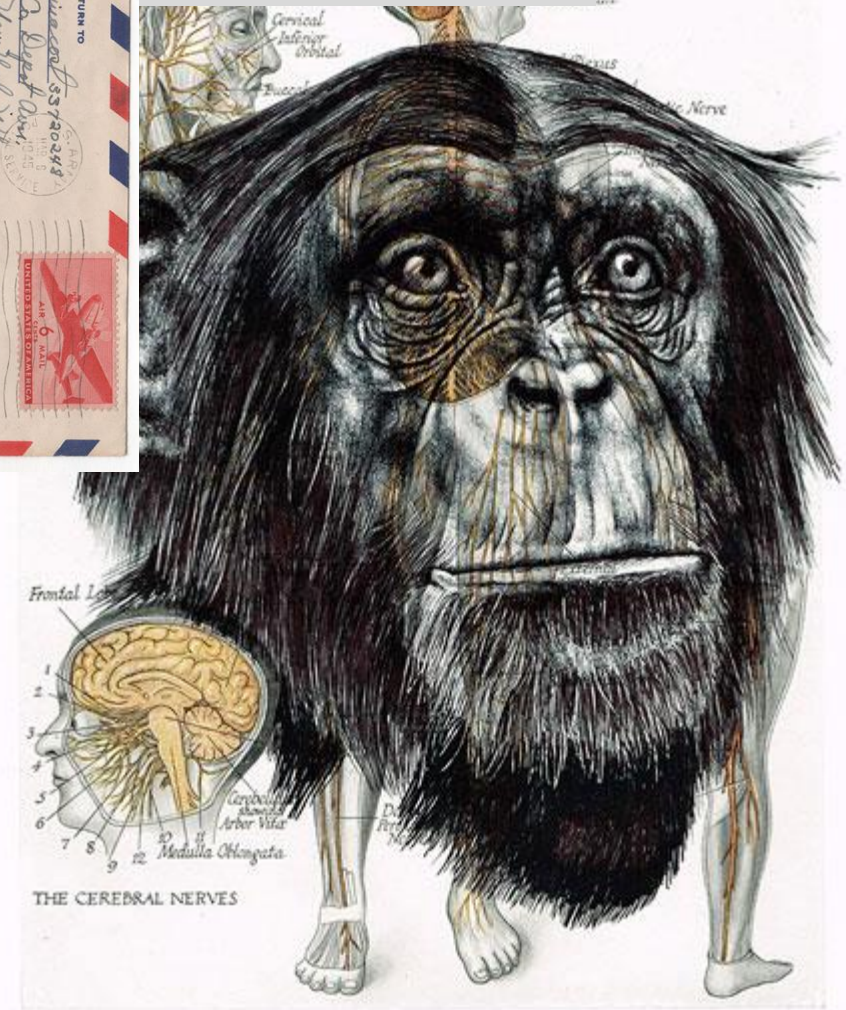
<https://www.markpowellartist.com/pages/faqs/>

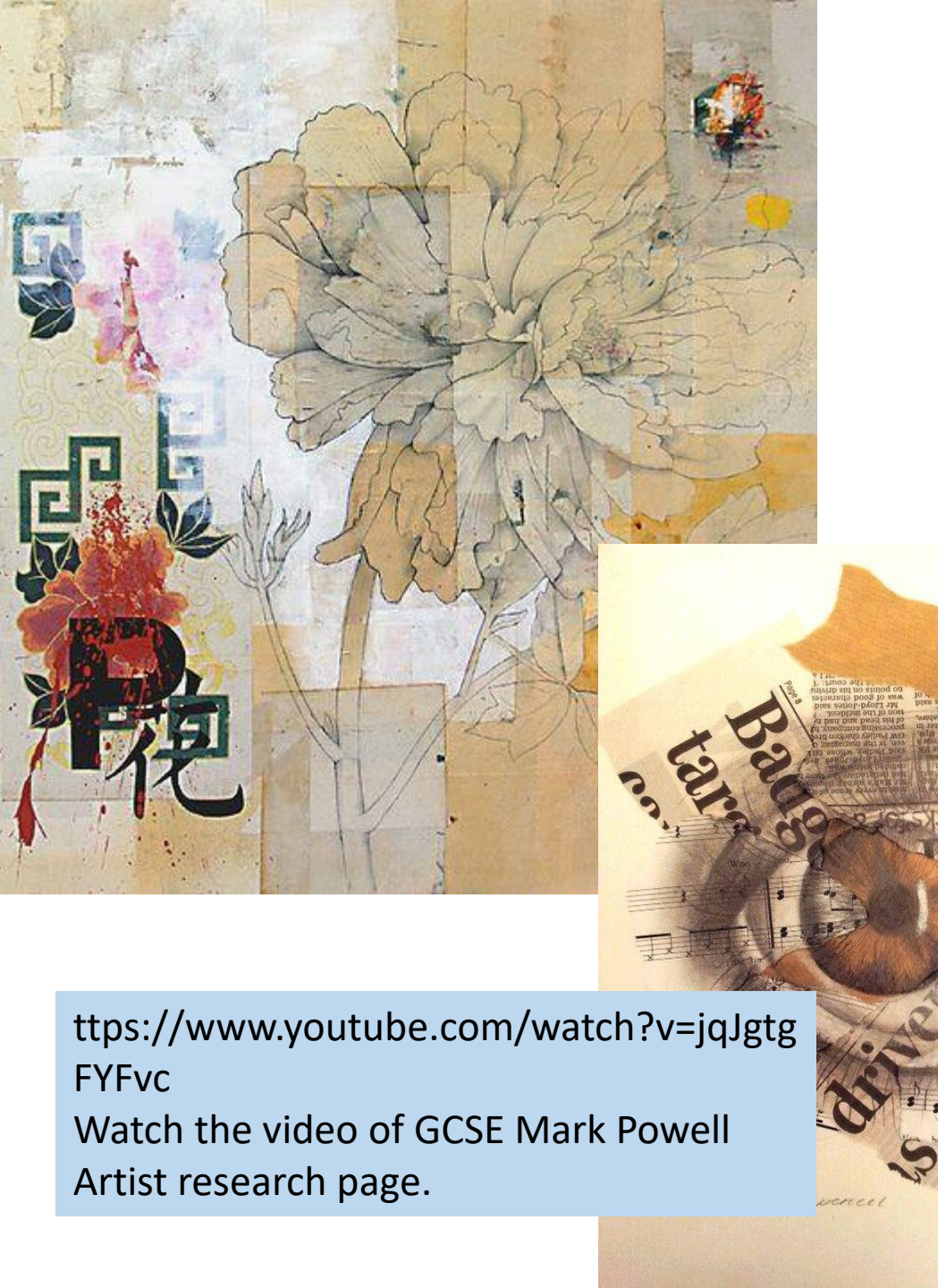


Artist  
Mark Powell



*What does a background add to an image?*





<https://www.youtube.com/watch?v=jqJgtgFYFvc>

Watch the video of GCSE Mark Powell  
Artist research page.

To be more ambitious with final pieces, begin by preparing an interesting surface or background.

- Gather a collection of Papers. (envelopes, pieces of newspaper, old letters) If you are unable to find papers you could create a surface with colour/washes.
- Arrange the papers and secure down with glue.
- Select a good quality natural image. We suggest a photographic image. (mushrooms, flowers, trees, animals)
- Use the instructions on the next slides to plot out your chosen image onto the surface you have created.

## Tonal Exercises/Observation detail

Aim: To develop tone and fine textures in your pen and pencil drawings. To work closely from observation to achieve a higher level of detail in your work.

### Task:

1/Collect a selection of natural objects and arrange them in front of you. Preferably on a plain piece of paper. You could work from a photograph if needed. You need to look at the objects continually through the activity.

2/Spend time studying where the details are and where the shadows and highlights fall on the objects.

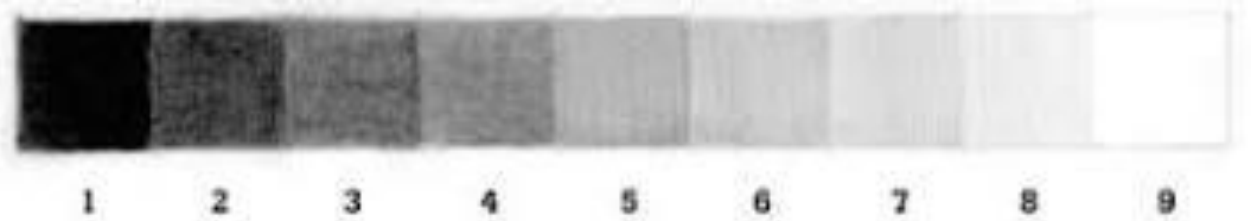
3/ Plot out the shapes/ cluster of objects with very light outlines. A sharp pencil is best for this.

4/ Add in the darker shadows by applying more pressure with the pencil. Release pressure to add in medium and lightest tones.

5/ Adjusting the pressure on the pencil will allow you to create dark and light areas.

6/Using different pencil marks (twisting, short strokes, circular motions) you can add the surface texture.

Top Tip: Highlights can be achieved by using a rubber or lightly tickling the page with a pencil.



Tonal Bar Shading  
Include a mixture of tonal shades in your pencil and pen drawings

<https://www.youtube.com/watch?v=TKbbri5x1xo>

Demonstration of how to lightly plot out a shape NATURAL OBJECT

<https://www.youtube.com/watch?v=95IJUjnwUUA>

Demo of light plotting out (shoe)

<https://www.youtube.com/watch?v=S3DCx0TzNRw>

How to create texture in pencil

<https://www.youtube.com/watch?v=jYGU0SFKo7s>

Different ways of using biro pen to add depth into your work.

