

PHOTOGRAPHY & SKETCHING EXERCISES TO IMPROVE YOUR FINE ART COURSEWORK.

Task : Photography Task

Task: Use your photo/tablet/camera to take a series of 15 photographs to go with your chosen theme.

(Suggested themes: landscapes, urban, natural portraits)

The most successful A Level projects start with a strong set of photographs to illustrate your initial ideas. At A Level it is more important to personalise your work early on, rather than relying on found images for too long.

Aim to be imaginative with the way you set up your photographs. **The sample images and suggestions on the next slides should help you.**

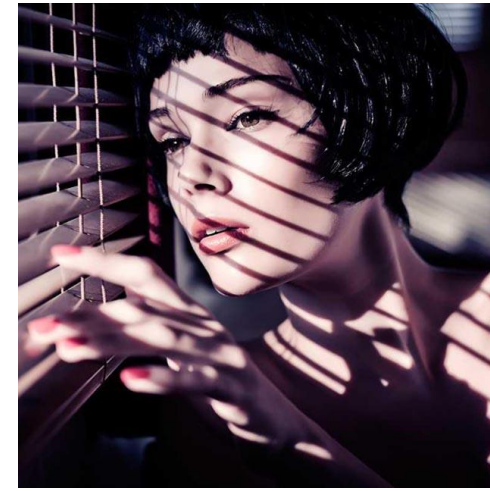


A* Grade 74 MARKS

This is a real set of A Level exam work. The sand dune paintings and drawings all came from the student's set of photographs.

Experiment with lighting.

Could you use natural light, torches, candles, fairy lights, lamps, street light, light from a phone or laptop screen, window light? What time of day will you take your photographs?



Dramatic Shadows & Reflective objects can add depth to your photographs and change the mood of your work.



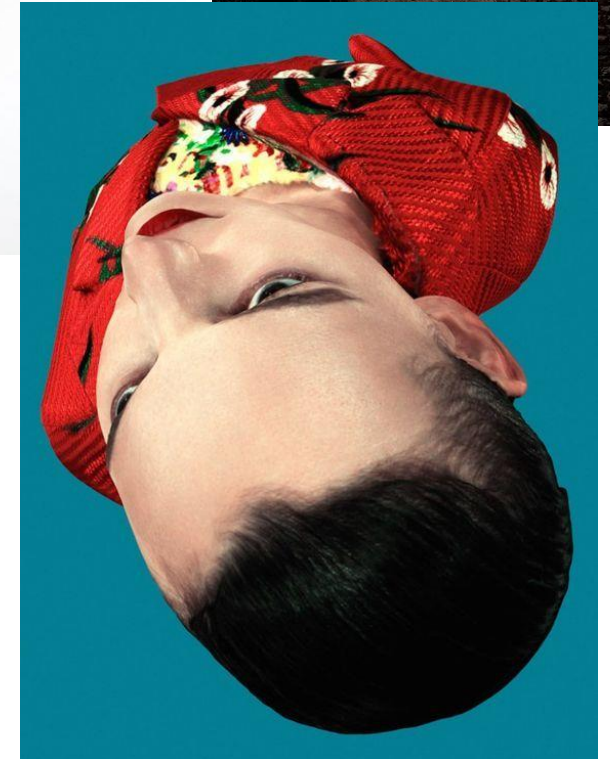


Changing the **viewpoint** from where you take your image. Get down on the floor or higher than your subject. This will help you capture exciting **unusual angles** in your work.



Change the angle that you shoot from

- Lie down on the floor
- Shoot under or below things
- Birds eye view
- Zoom right in on something
- Take a photograph from a reflection



Photography Task Review

- Save your photographs and print if possible.
- Present them in a book or on powerpoint slides.
- Review your most successful images. Highlight & Annotate the images you will use to draw from. Why have they been successful?

What has worked well?

Lighting

Angle

Pose

Composition

Props



PIXLR EDITING ONLINE IS A
FREE PHOTO EDITING
WEBSITE IF YOU WANT TO
ENHANCE YOUR PHOTOS



TASK: Drawing from Photographs

You can start to create sketches from your new set of photographs.

Keep sketches fairly loose and lively.

You may want to use pencil/pen with washes of watercolour to add depth.

