

# FINE ART TASK

## DRAWING WITH LINES

- Lines can be an exciting way to CREATE a drawing.
- Direction of line can play an important role in a piece of art.
- Dense areas of line can create depth.
- Spacing of lines can be important.

The examples on the next slides are ALEVEL pieces of work







Architectural/Structural examples



Portraiture examples

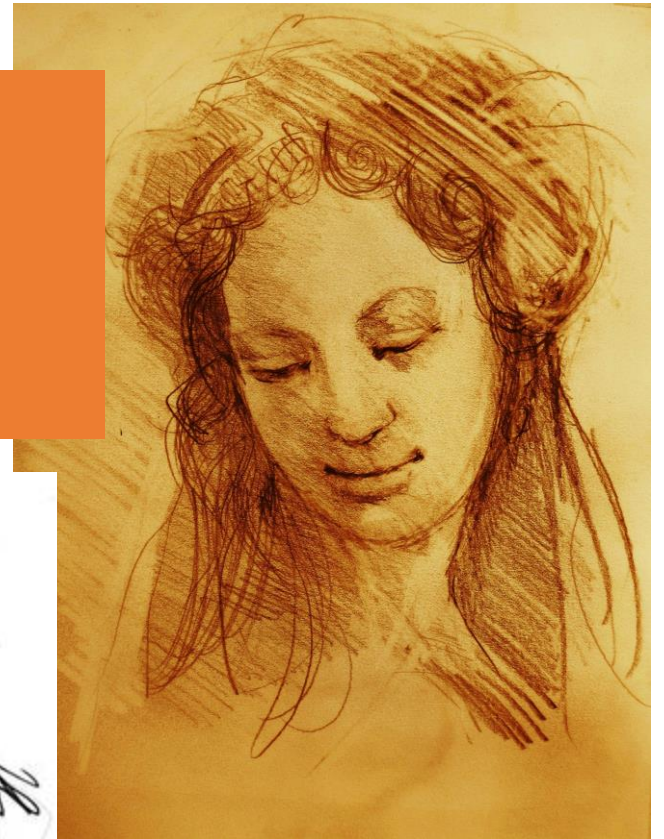
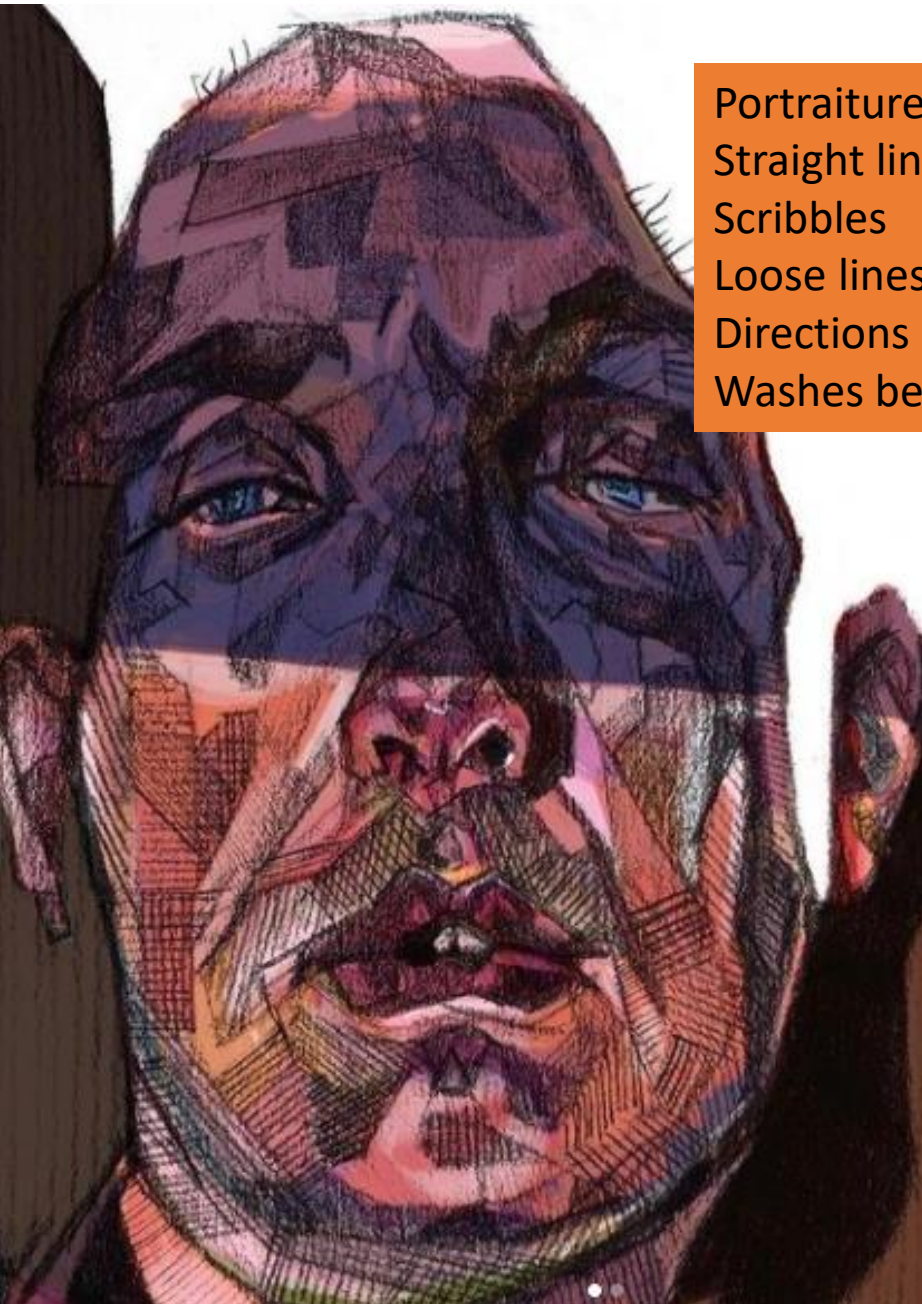
Straight lines

Scribbles

Loose lines

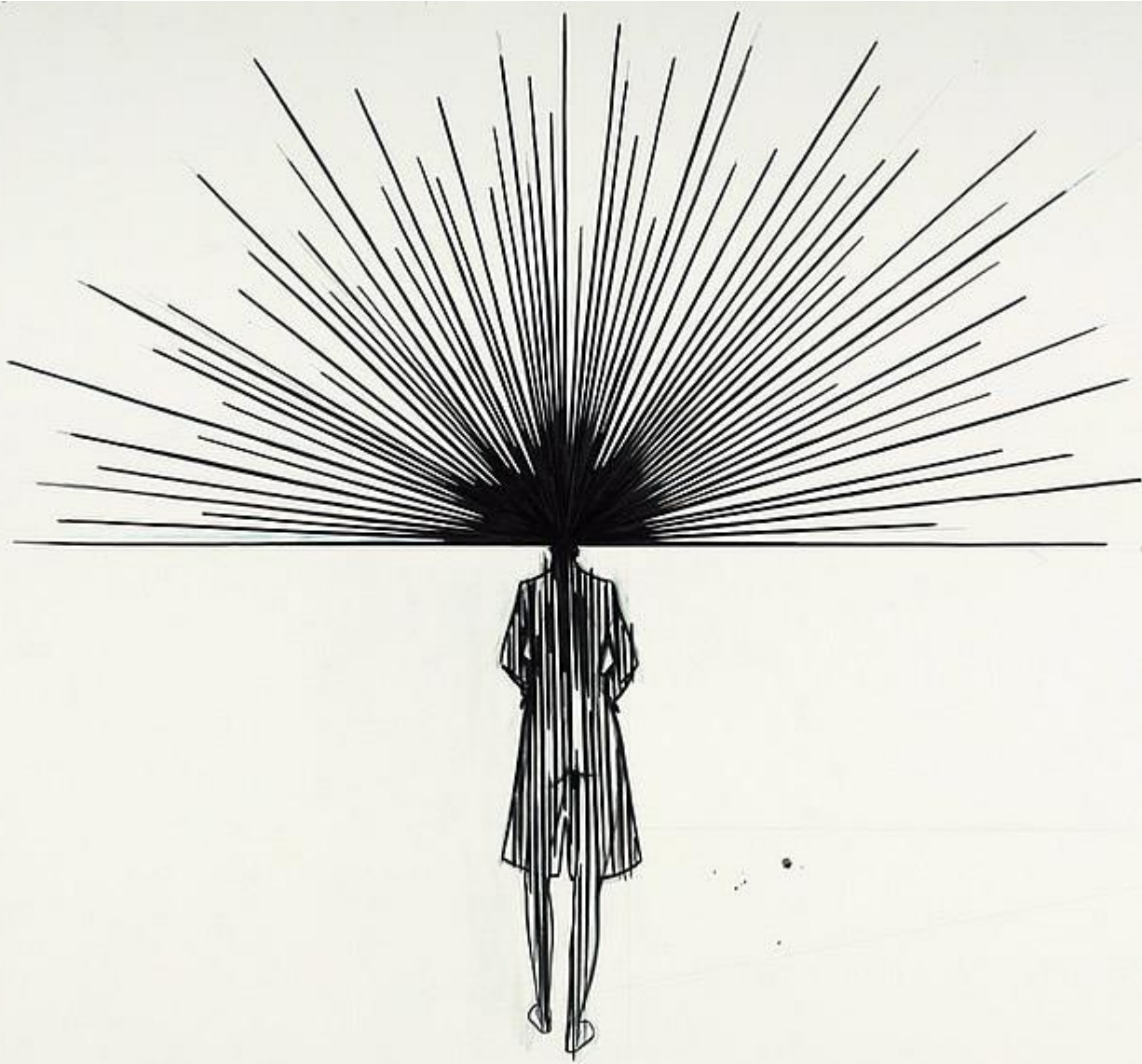
Directions

Washes behind your portrait could work well

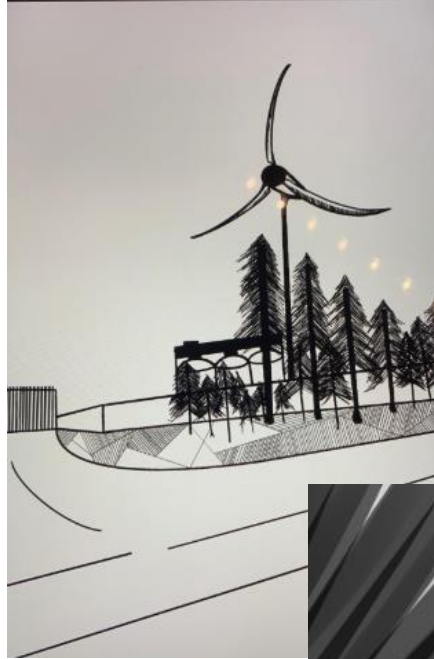




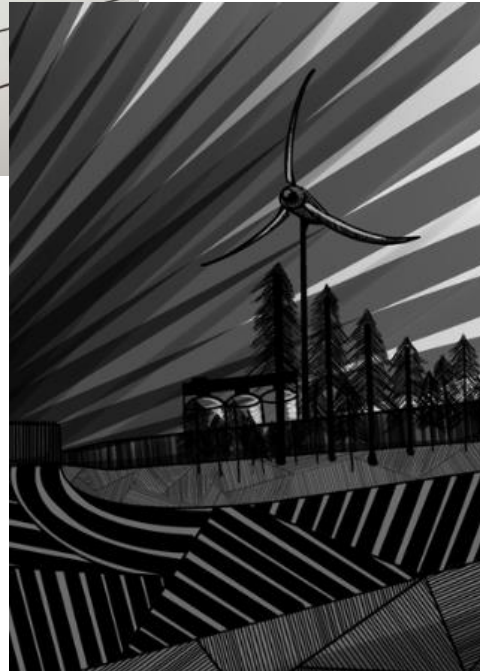
## FIGURE EXAMPLES



Here's some that Year 13 created in 1 hour!



Which then developed into this piece of digital art!



# DRAWING TASK

CREATE A LINE DRAWING  
CONSIDERING THE DIRECTION  
OF LINE AND SPACING. THE  
LINES DO NOT NEED TO BE  
STRAIGHT!

MAKE SURE YOU USE YOUR  
OWN IMAGE/PHOTOGRAPHY

