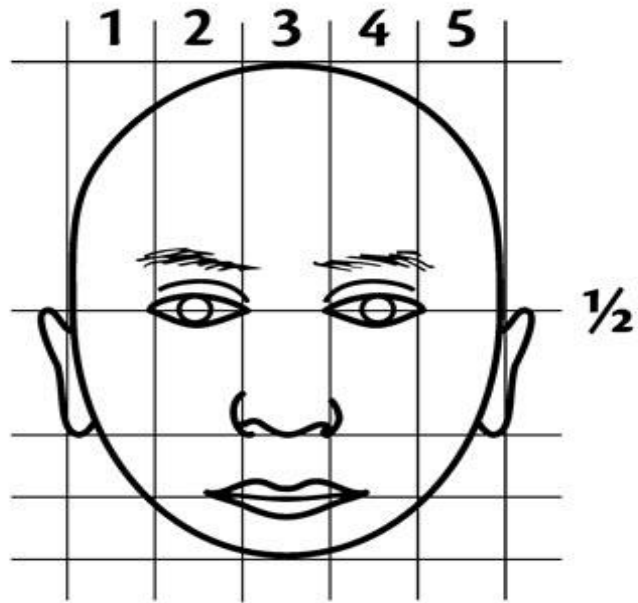
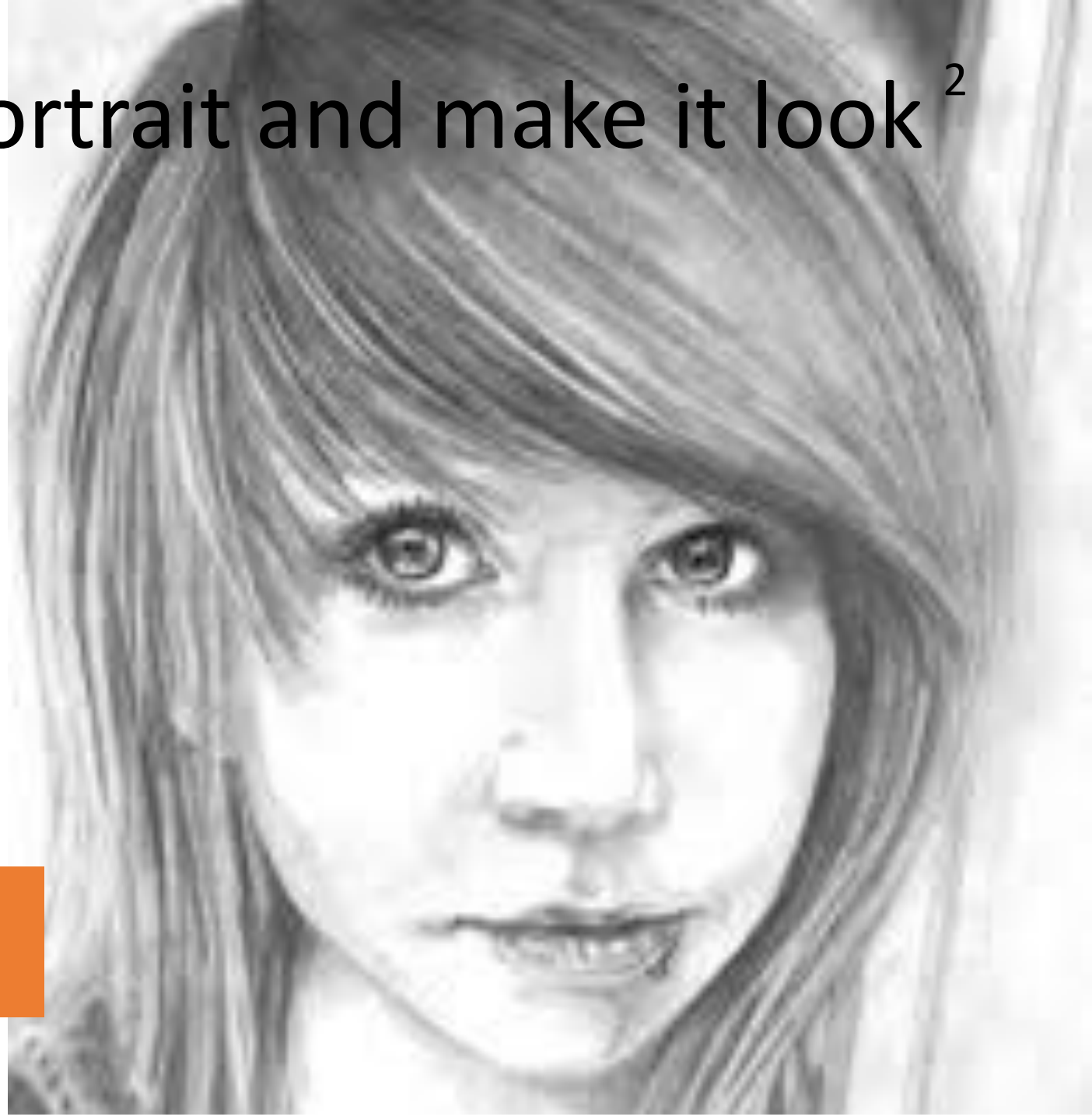




# Adding depth to a portrait and make it look <sup>2</sup> more realistic



YOU SHOULD FOLLOW THE LESSON ON BASIC PORTRAIT PROPORTIONS BEFORE FOLLOWING THIS ONE



# How do you



Now you  
should focus  
on on

See



**Shading**

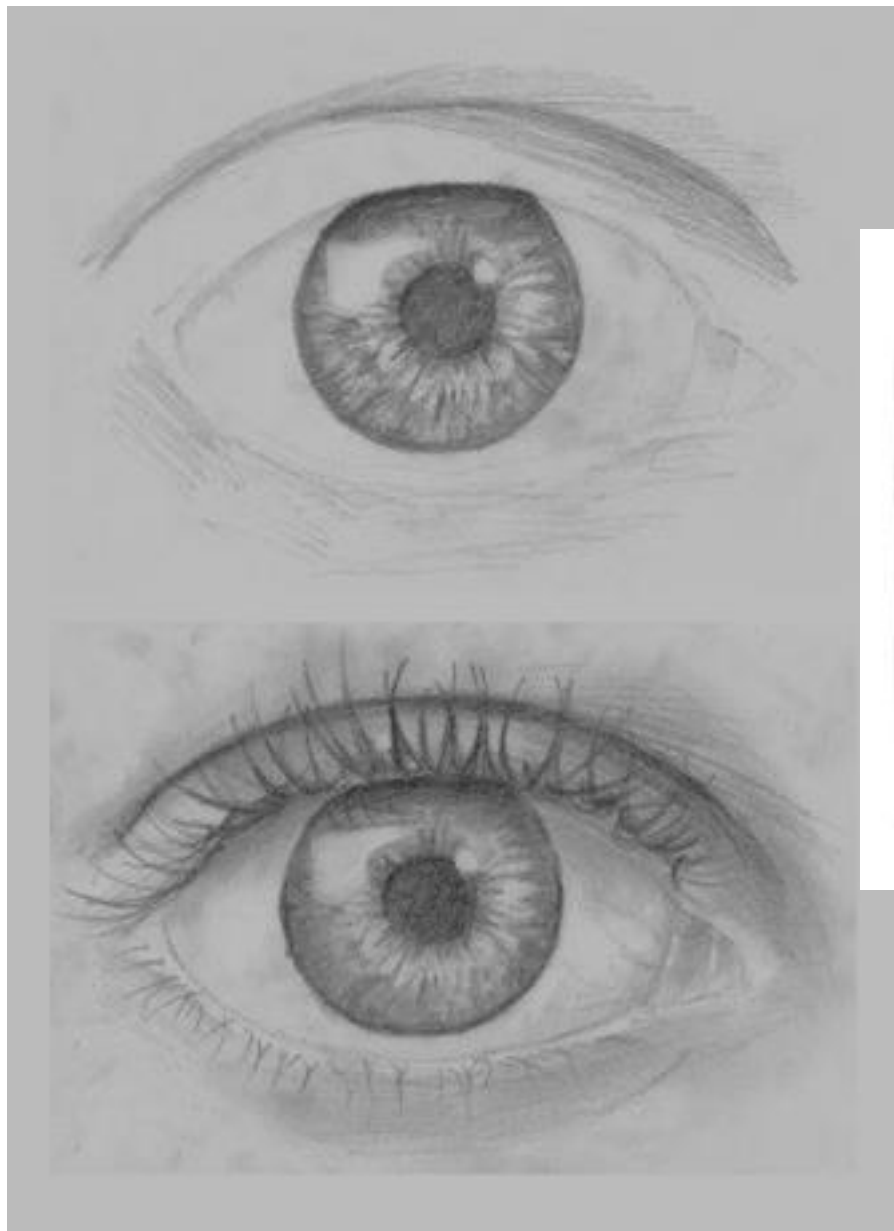
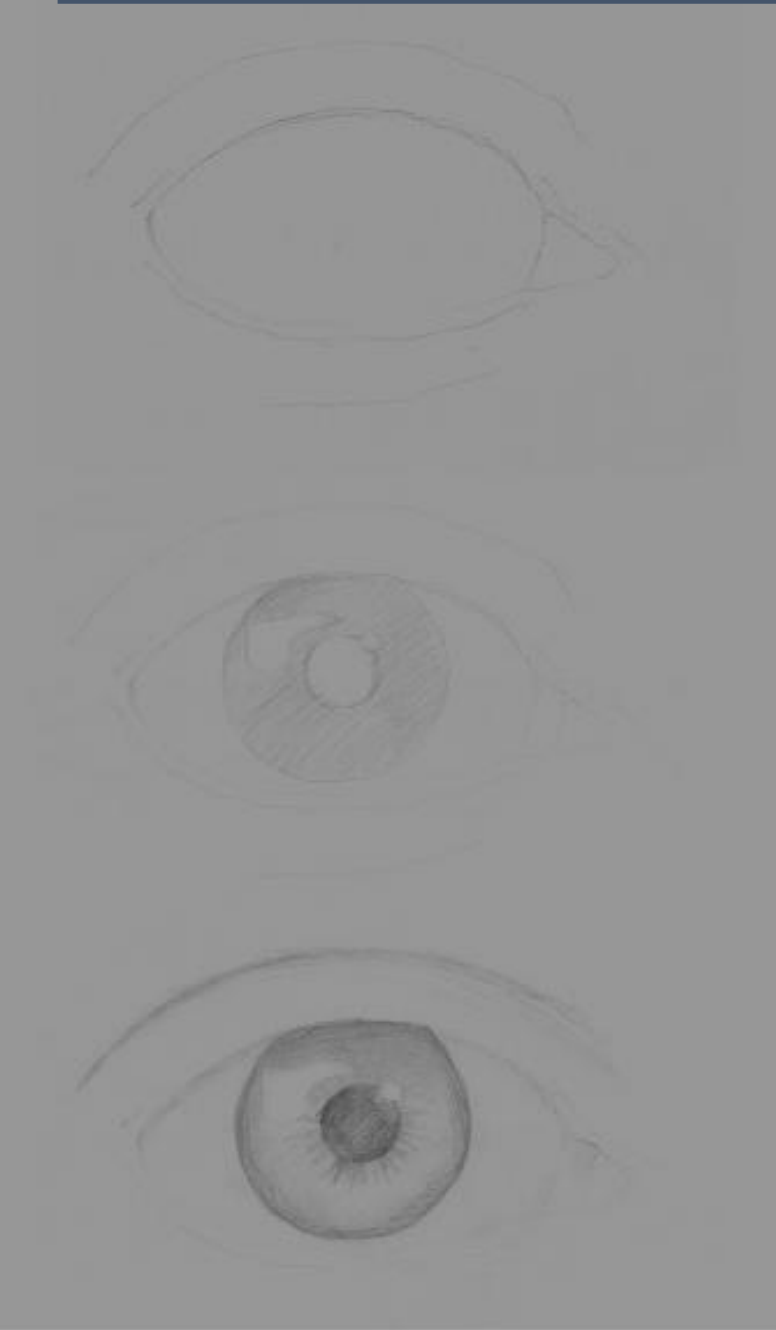
Smell

**Tone**

Taste / speak?



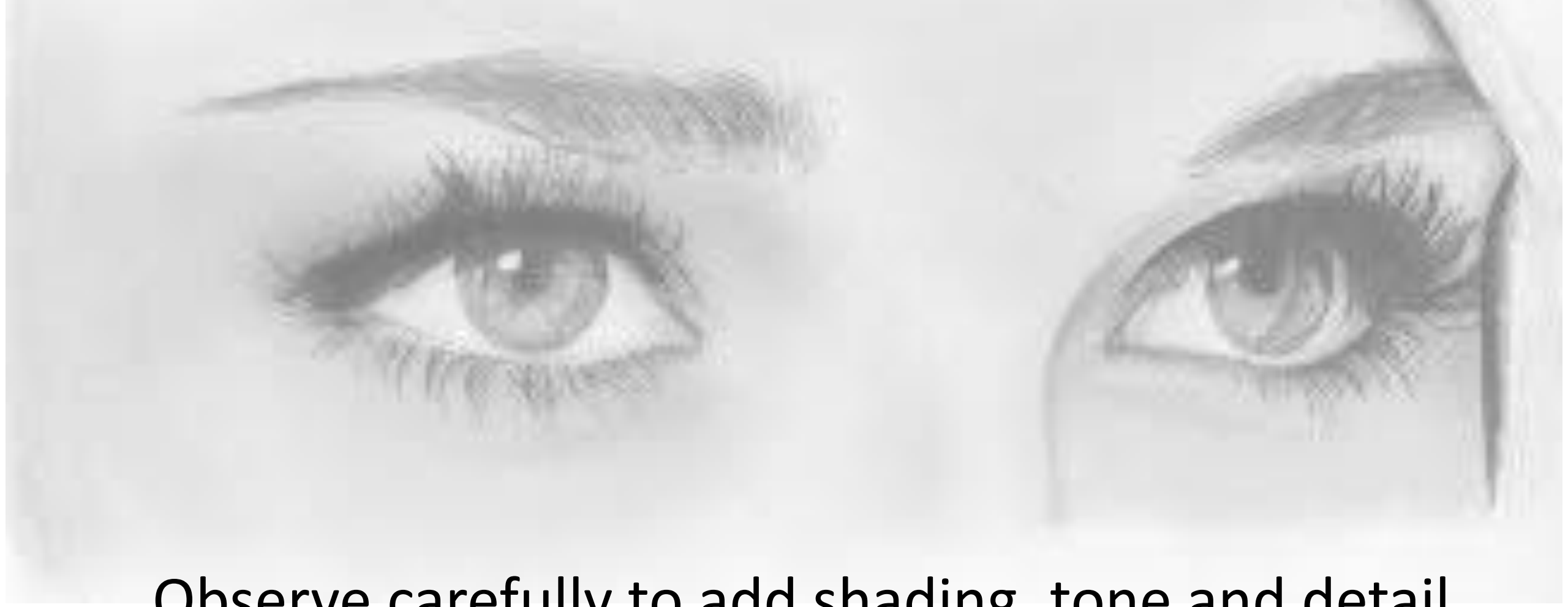
**Detail**



Build up detail when drawing in the eyes



<https://www.youtube.com/watch?v=7hk6nfj2pno>



Observe carefully to add shading, tone and detail while looking in the mirror. Where are the dark and light areas? What other tiny details do you notice?

## Next Task

Now you have looked closely at your face you should either

1/ Add tonal shading and detail to an existing drawing

Or

2/ Draw out your facial features and carefully build up tone and details.

Keep looking in the mirror as you draw!



**FOCUS ON**

**Shading**

**Tone**

**Detail**