

FINE ARTIST ALEVEL YEAR 12

Week 1



A Level Personal Creative Enquiry

You will begin the initial research and drawings for the A level project.

This project is worth 60% of your final A LEVEL grade so it is important that you take pride in everything you do. See the list of possible themes or come up with your own ideas.

Begin your project in a new sketchbook, unless it links closely with your last project.

Possible themes / starting points

Possible themes / starting points

**Movement Obsession The Body Human form Portraiture Emotions Expressions Architecture
Urban Surrounding Changing Landscape Environment Journeys Significant events Messages
Nature Growth & Decay Trapped/Contained Texture Close ups Distortion
Inside Our world Hidden Time Interiors Mechanical/inner workings Structures
My Environment (climate, surroundings, landscapes, people, in the news, social and culture environment)
Human form Human evidence Literature**

You can select your own theme for the A Level project, but you need to make sure you pick a theme which will provide you with lots of ideas.

1

Research Week

A01

Week
Beginning

This week we want to see possible ideas/thoughts about a theme you are wishing to develop/explore for your new A LEVEL PROJECT (Don't limit yourself at this stage by having too narrow an idea.). You can use the list of words on the previous slide or come up with your own theme.

A03

4 pages

1. Create an exciting visual & written mind map of different ideas for your personal investigation project. 1 page

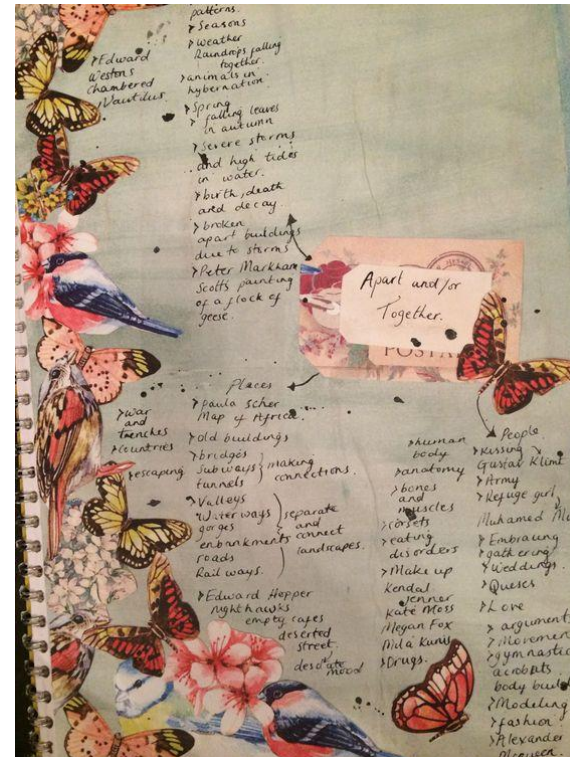
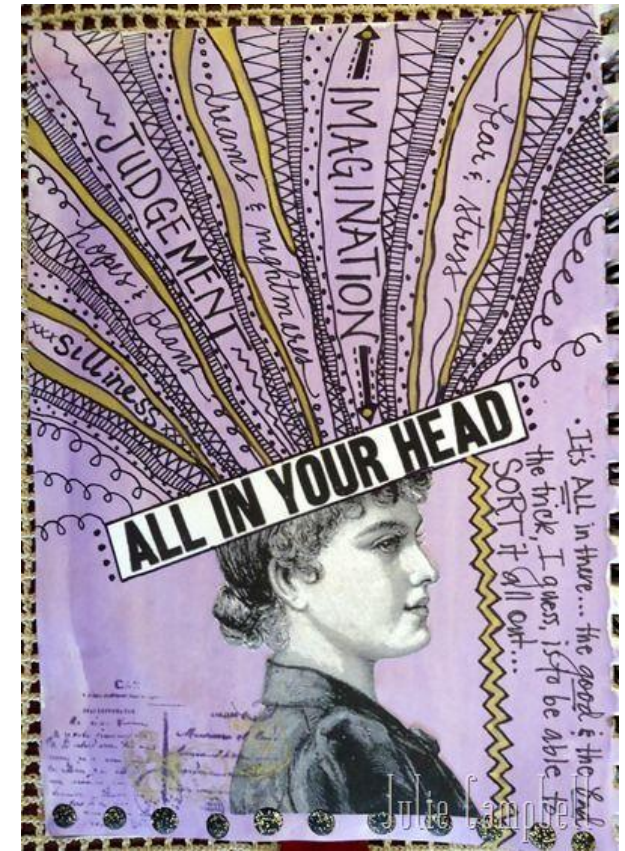
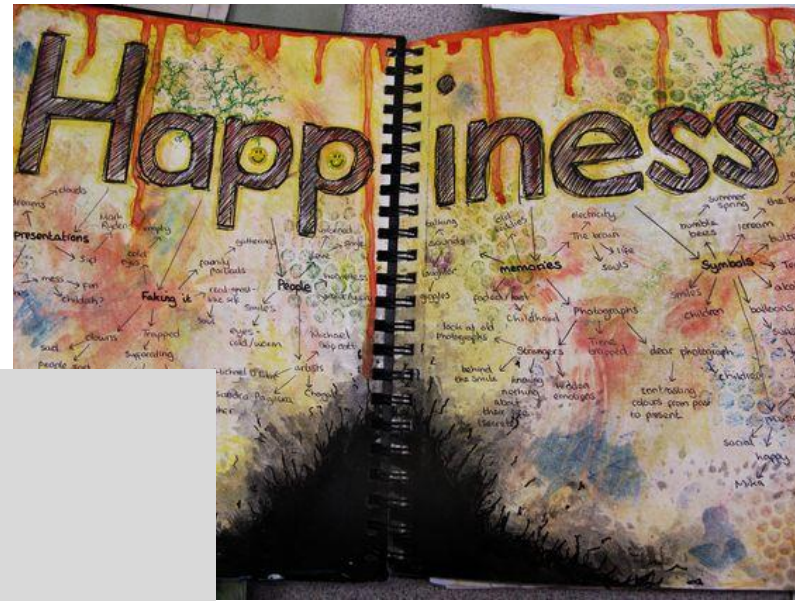
2. Write an Introduction to your theme/investigation. What have you chosen to explore for your personal investigation project? (200/300 words) See extra slides for more help.

3. Collect & present Images/sketches/photographs to start your project. (2 pages) Photographers should use your cameras/phones to photograph objects and images to go with your theme where ever possible.

Homework: Complete the 3-4 pages of research. Ask others about your project, add in quotes and questionnaires if appropriate to your research.

Creative Mind Mapping (2 hours)

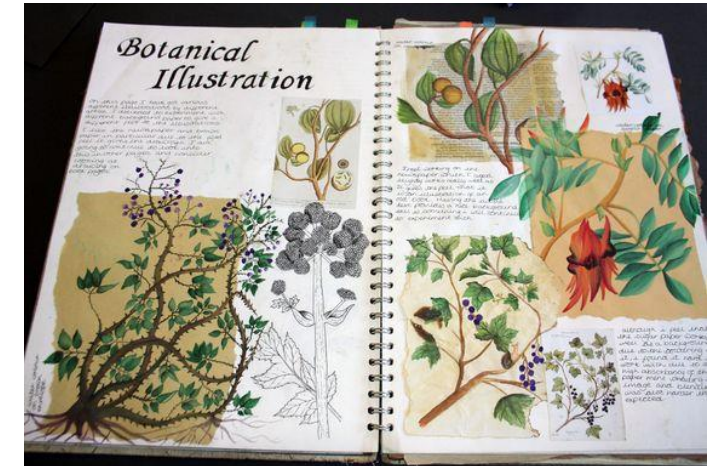
- Collect initial ideas for possible themes.
- Talk to each other and people at home to generate ideas.
- Keep your title open at this stage, remember it is a longer sustained project to take you all the way to January 2021
- Question others around your theme.
- Read articles/news reports around your theme.
- Think carefully about how you present your page. Start on a high.



Create lively Sketches and drawings across your double page/board to explore the images you have collect. (2 pages approx. 2 hours)

Consider the following:

- Experimenting with the way you use LINE in your drawings (looser lines/tight lines/heavy/light)
- Building up layers of pencil and pen.
- You can add washes of watercolour/coffee/watered down acrylic to add a suitable background to your drawings.



Task 3: Write an introduction to your project explaining what your theme is and why you have chosen it as your personal investigation project. (200-300 words)

This could be typed up or handwritten.

What theme are you interested in?

What has inspired you? (news reports, stories, experience, general interest)

Where will you start?

Are there any artists/photographers which have caught your attention for your chosen theme?

Record all website you have visited and dates in the back of your sketchbook. You will need this information when you write your essay.

Week 2 Fine Art

WEEK 2 FINE ARTISTS (Approx 4-5 hours)

2

Wk
beginnin
g

2-3
pages

Experimentation A02

AT NO POINT YET SHOULD YOU BE CONSIDERING FINAL PIECES.

Produce

EXTRA studies/drawings from your collected images. Experiment with materials and techniques. You can change the size of your drawings.

Manipulate materials to suit the image you have selected.

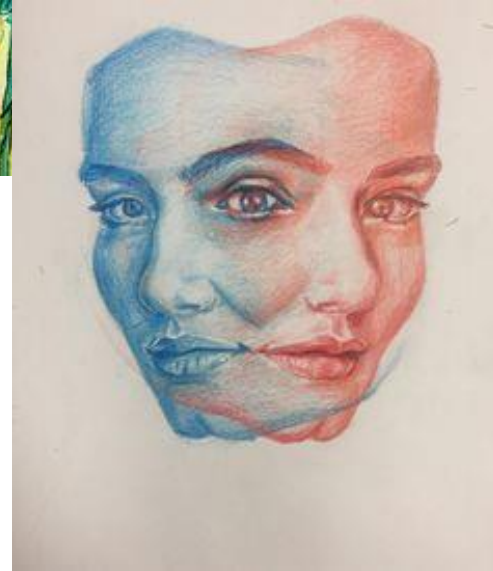
1. Drawing on a surface/background other than the white page.
(Biro/Pencil/other) Think about surfaces you experimented with in your last project.

2. Painting with what every paints you have available at home.

3. Select an different material you haven't used yet. (2 colour pencils,
thread onto white paper, charcoal, coloured pens)

4. Painting with chalk pastels & water.

Add annotations to your experiments to explain why you have selected an image and technique.



WEEK 3 FINE ART

Week 3 Fine Artists

Refine your drawings from last week into **2 stronger Show**

Stopper pieces of development. You can work outside of

your book if you wish. Focus on quality of your recording

skills and pushing your ideas on from your first

experiments. Work from your own photographs or life

where ever possible, avoid copying artist's work.

1.

2.

3. Use your phone to photograph your finished drawings. Rework

them using editing apps. (e.g. Vinci)



WEEK 4

Week 4 Fine Artists

3

Week
beginning

3-4 pages

1/Introduce approx. 2 relevant artists.

This should include:

Writing about your artist's subject/style/technique. Use keywords from the Artist Analysis sheet. Thorough research into your artists is vital for this project, as you will be writing an essay about your project.

2/ Write down any websites/books/blogs/journals you use in the back of your book.

3/ Print images of the artists work if possible

4/ Create 2-3 pieces in the style of your chosen artists.

You must analyse in depth and use specialist terms and language.

ARTIST WEBSITES TO HELP:

This is Colossal (there's a search tab at the top of the page)

Jealous Curator

Arty Teacher

Tate

Saatchi Online

Baltic Contemporary Art Centre Website/ Past exhibitions.

Week 5



A01 (DEVELOPING)

Develop your own ideas further. Using the materials you have available create new studies with your artists in mind. Try to combine both artist's styles if you can!

- 1.
- 2.
- 3.

