

Site Development

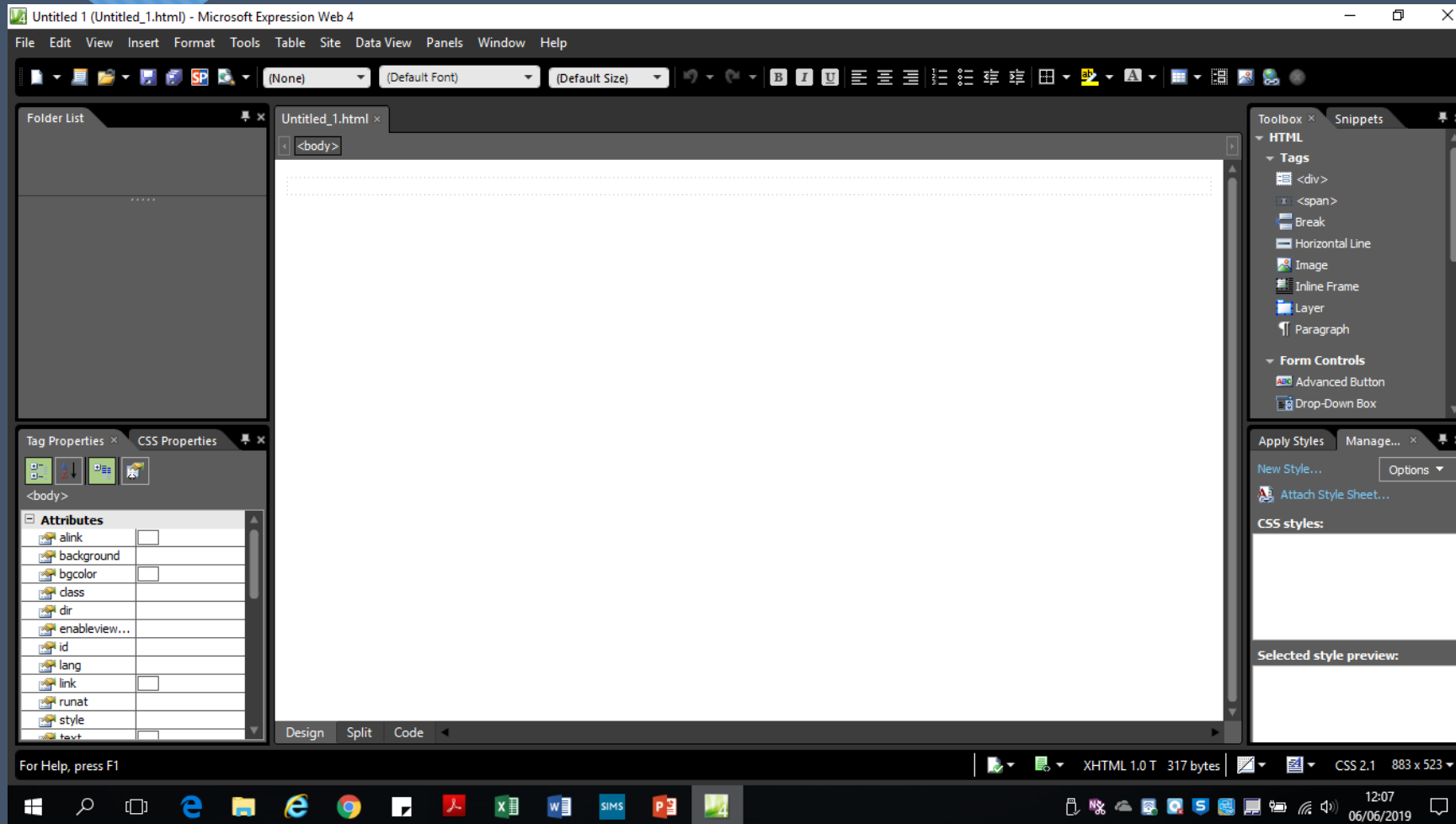


Objectives

- Know how to set up a new site
- Learn the basics of Microsoft Expression
- Create a table layout for the homepage



Microsoft Expression



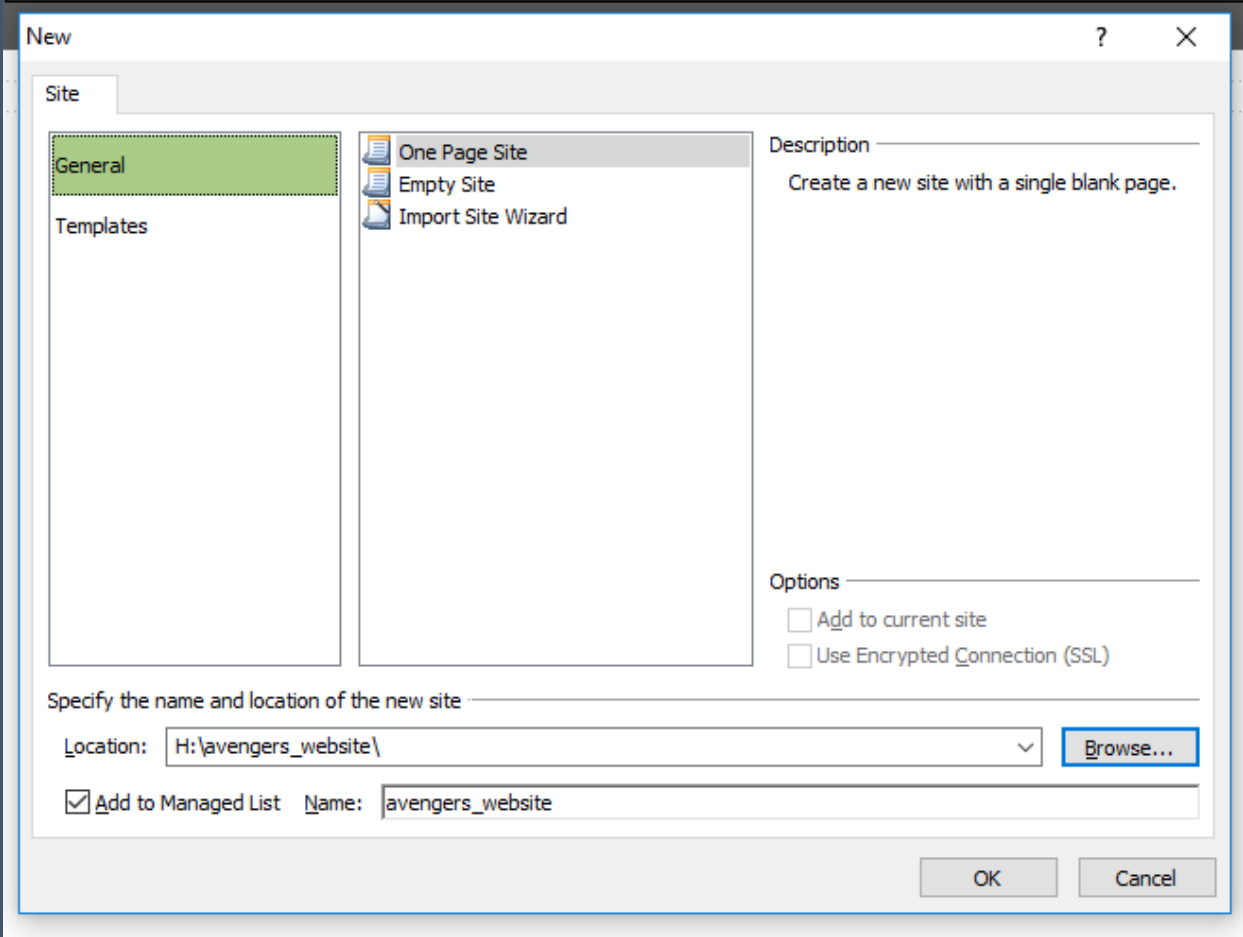
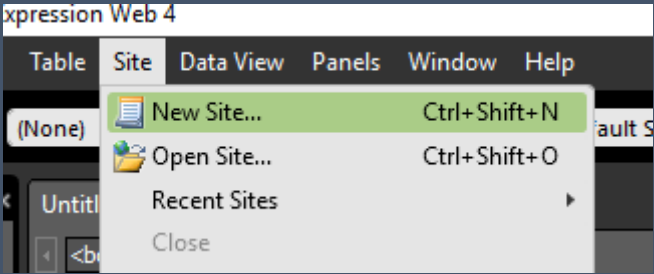


Defining the Site

- Where you save things is really important when making a website
- You need to create a 'site folder' in your area where you will save **everything** that will be part of your site – pages, images etc.
- This needs to be kept in the same place!



Defining a Site





Site View

The screenshot displays the Microsoft Expression Web 4 interface. The main window shows the 'Site View' for the folder 'H:\avengers_website'. The 'Folder List' on the left shows the website folder and its 'default.html' file. The 'Site View' pane displays a table of the contents of the website folder:

Name	Title	Size	Type	Modified Date	Modified By
default.html	default.html	1KB	html	06/06/2019 12:25	NEWCASTLE\64449

The interface includes a menu bar (File, Edit, View, Insert, Format, Tools, Table, Site, Data View, Panels, Window, Help), a toolbar, and several task panes: 'Tag Properties' and 'CSS Properties' on the left; 'Toolbox' and 'Snippets' on the right, containing HTML tags like <div>, , Break, Horizontal Line, Image, Inline Frame, Layer, Paragraph, and Form Controls like Advanced Button and Drop-Down Box; and 'Apply Styles' and 'Manage...' at the bottom right. The Windows taskbar at the bottom shows the time as 12:25 on 06/06/2019.

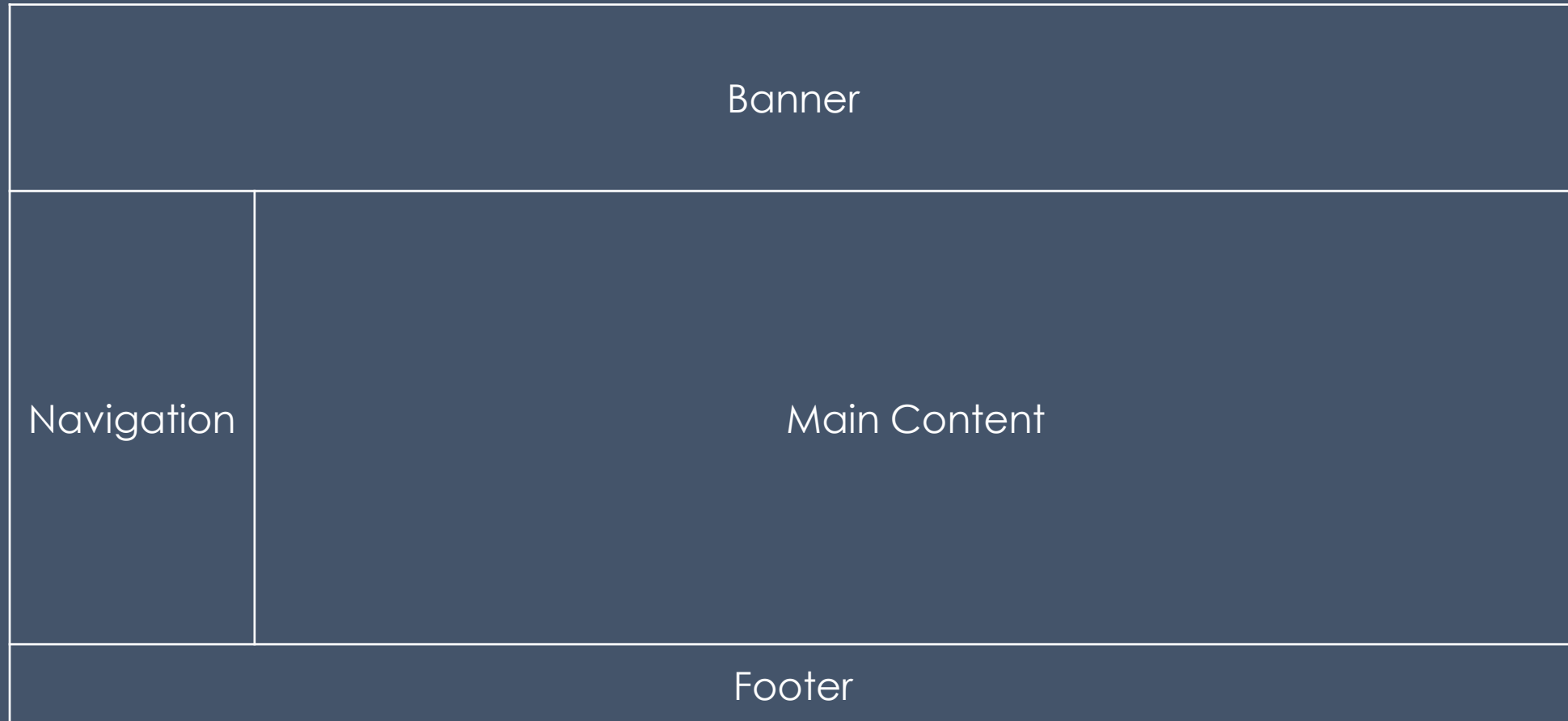


What do we mean by Layout?

- Looking at how the page is broken up into sections that contain certain content
- Separate sections are typically created for
 - The banner
 - The navigation / buttons
 - Main content
 - Footer with additional information or links
- Usually this achieved by creating tables – although the outline of the table cells is typically not visible

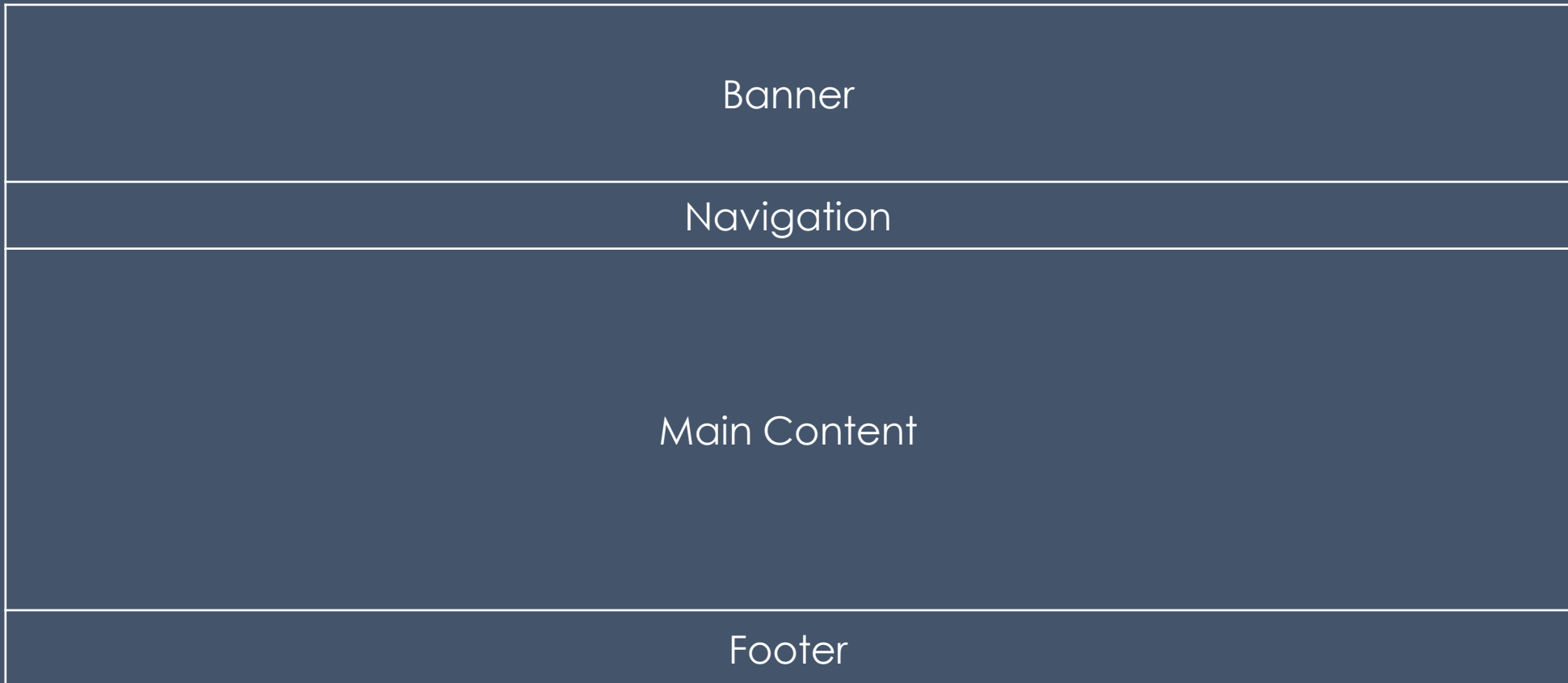


Common Examples





Common Examples





Layout

- The examples given are what you may think of as being ‘traditional layouts’
- Many variants of these
- Navigation sometimes can be via a pop-out menu
 - Saves space on the page
 - Allows quick access to more pages – as opposed to having to go through other menus or pages

