

# Designing the Page Layout

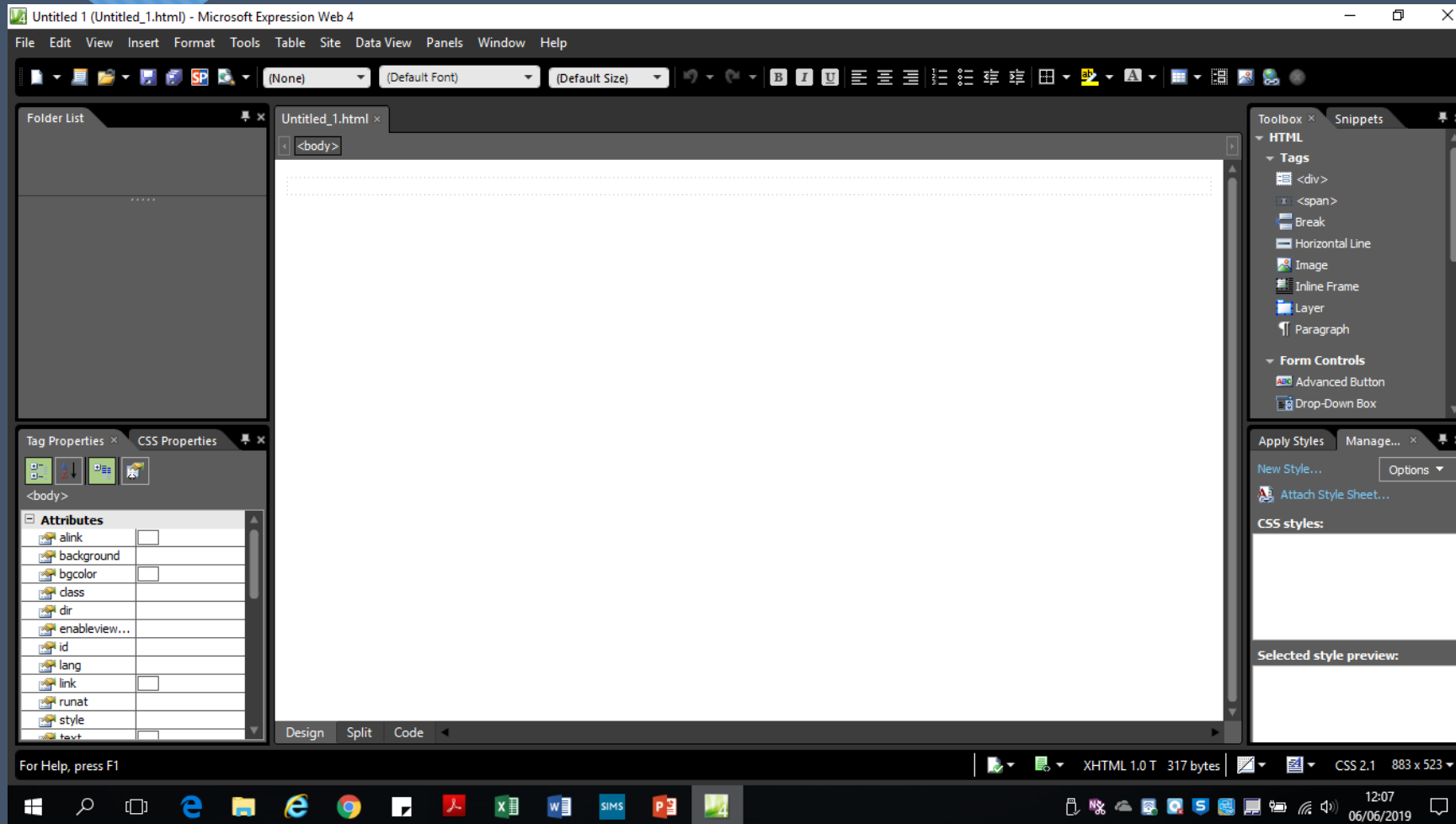


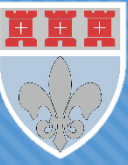
# Objectives

- Know how to set up a new site
- Learn the basics of Microsoft Expression
- Create a table layout for the homepage



# Microsoft Expression



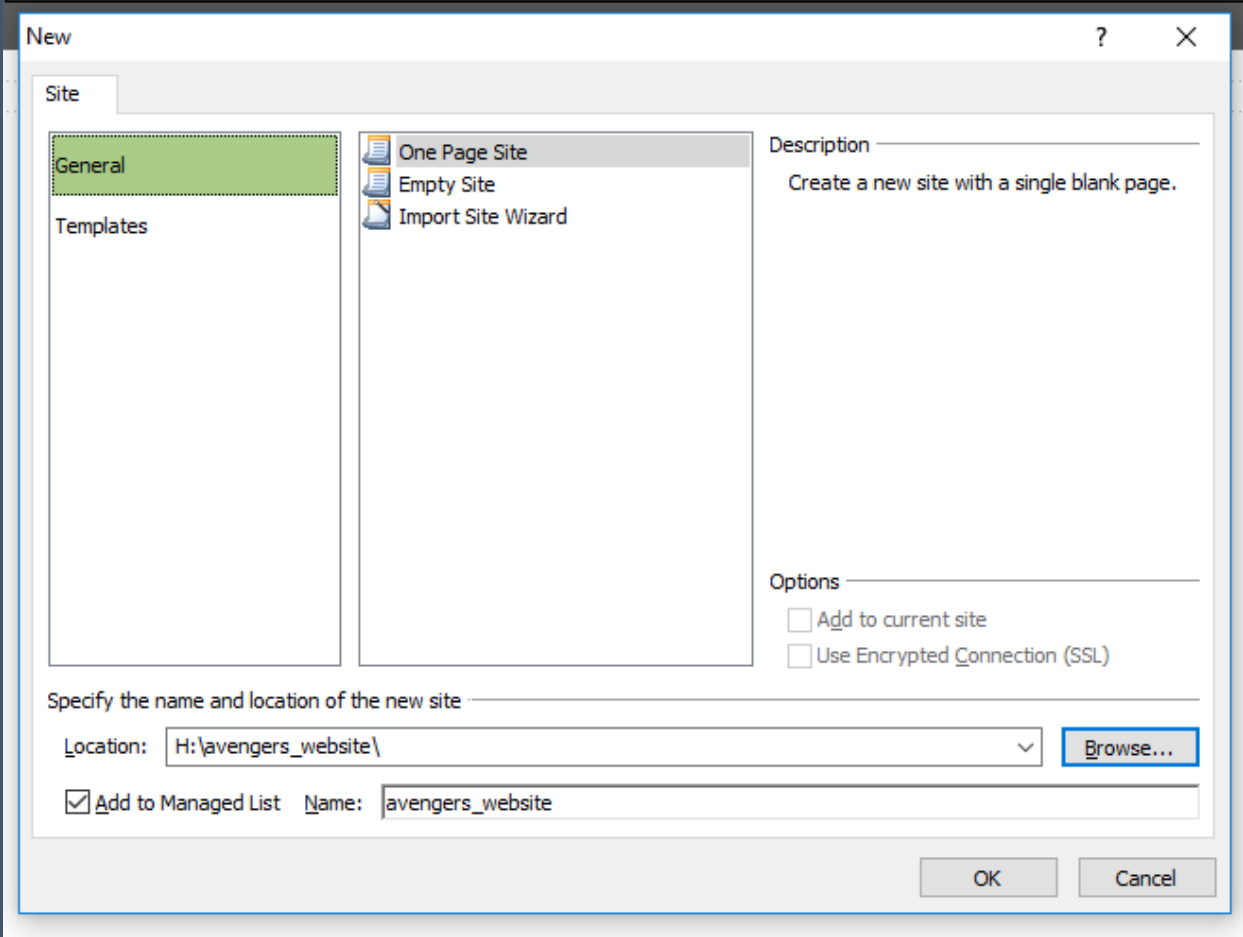
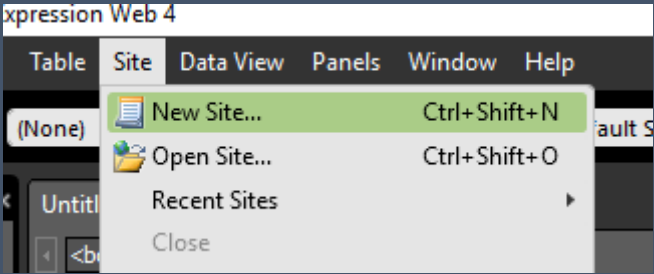


# Defining the Site

- Where you save things is really important when making a website
- You need to create a 'site folder' in your area where you will save **everything** that will be part of your site – pages, images etc.
- This needs to be kept in the same place!



# Defining a Site





# Site View

The screenshot displays the Microsoft Expression Web 4 interface in Site View mode. The main window shows the contents of the 'H:\avengers\_website' folder, listing a single file 'default.html' with a size of 1KB, type 'html', and a modified date of 06/06/2019 12:25. The interface includes a menu bar, a toolbar, and several panels: Folder List, Tag Properties, CSS Properties, Toolbox, Snippets, and Apply Styles. The Windows taskbar at the bottom shows the system tray with the date 06/06/2019 and time 12:25.

Name	Title	Size	Type	Modified Date	Modified By
default.html	default.html	1KB	html	06/06/2019 12:25	NEWCASTLE\64449

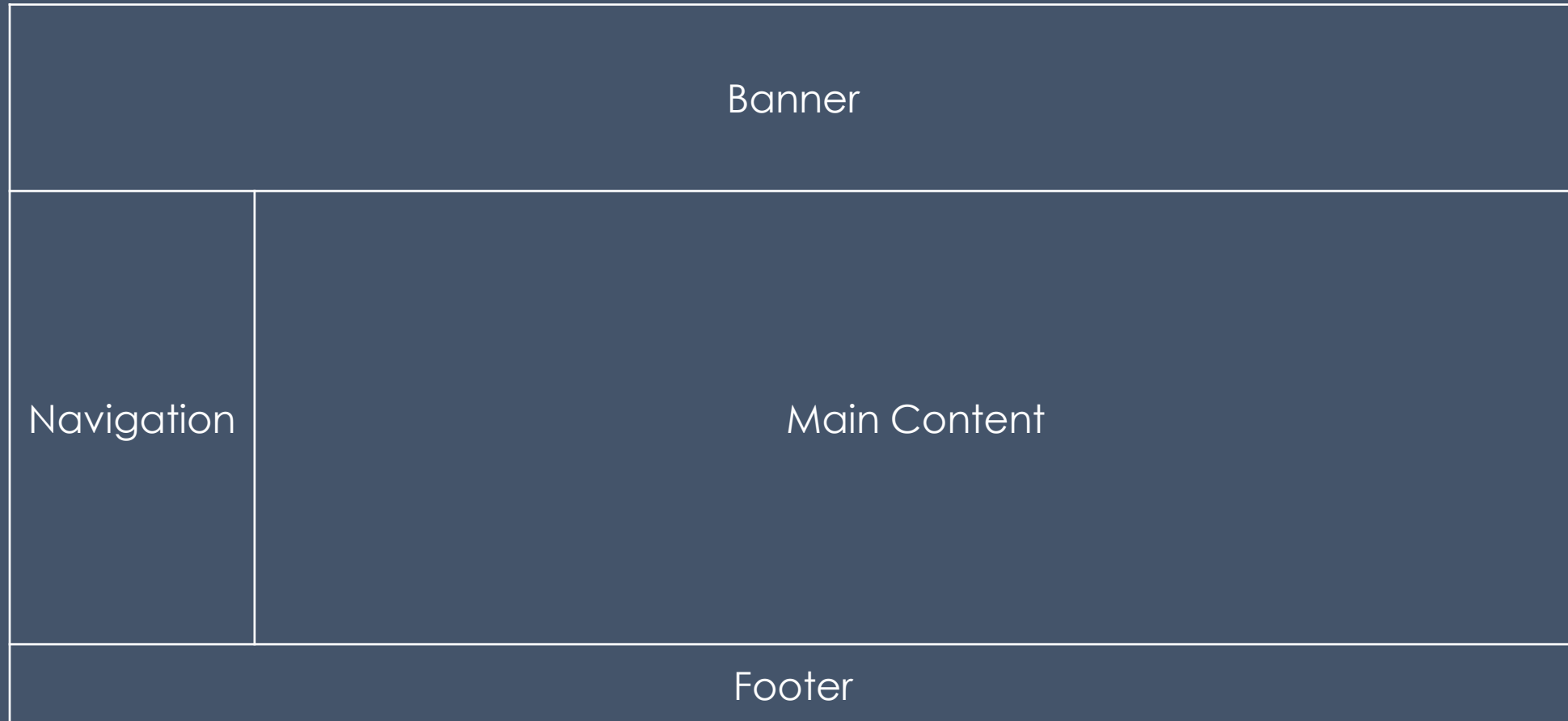


# What do we mean by Layout?

- Looking at how the page is broken up into sections that contain certain content
- Separate sections are typically created for
  - The banner
  - The navigation / buttons
  - Main content
  - Footer with additional information or links
- Usually this achieved by creating tables – although the outline of the table cells is typically not visible

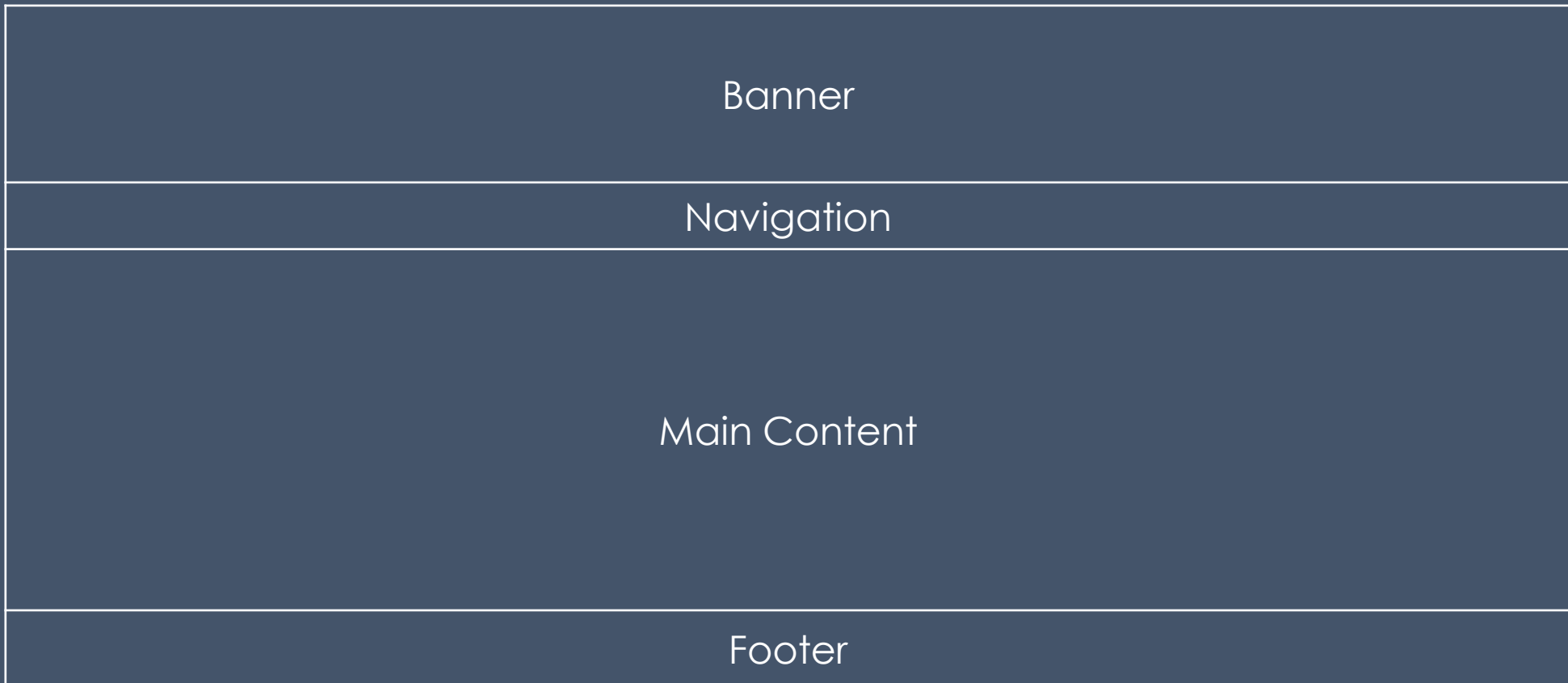


# Common Examples





# Common Examples





# Layout

- The examples given are what you may think of as being ‘traditional layouts’
- Many variants of these
- Navigation sometimes can be via a pop-out menu
  - Saves space on the page
  - Allows quick access to more pages – as opposed to having to go through other menus or pages



# Creating a Table