

Designing the Page Layout

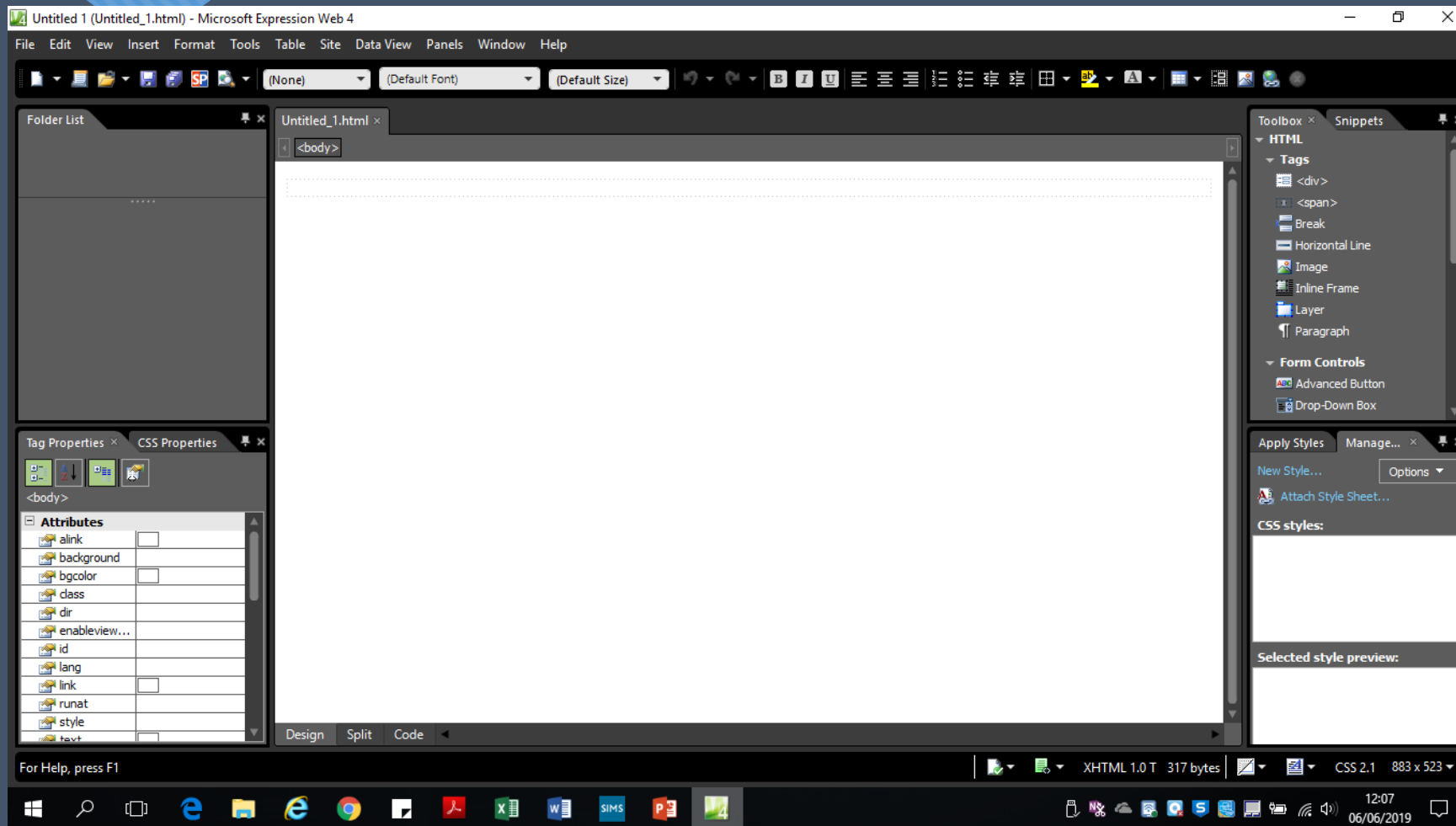


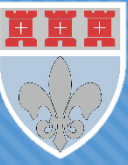
Objectives

- Know how to set up a new site
- Learn the basics of Microsoft Expression
- Create a table layout for the homepage



Microsoft Expression



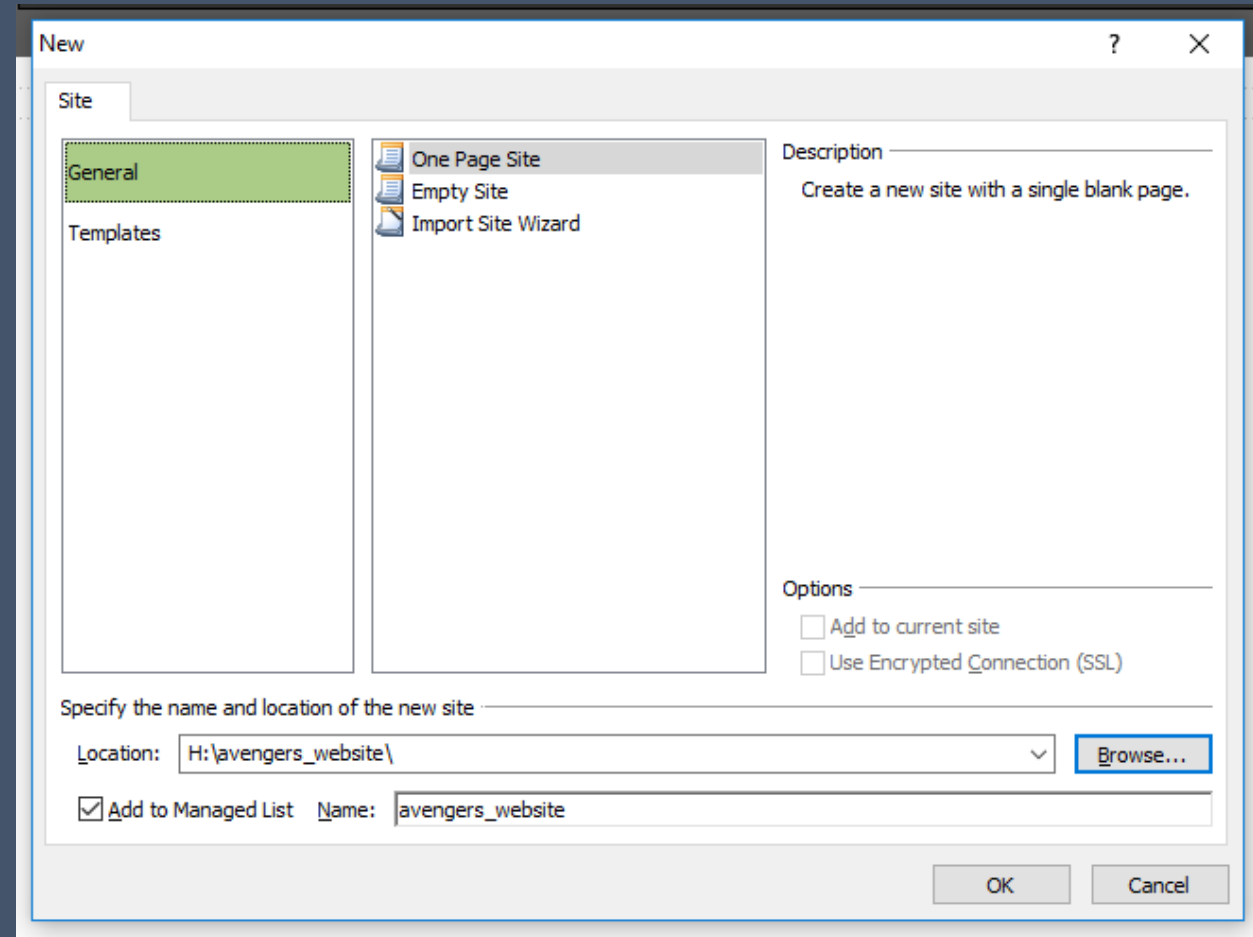
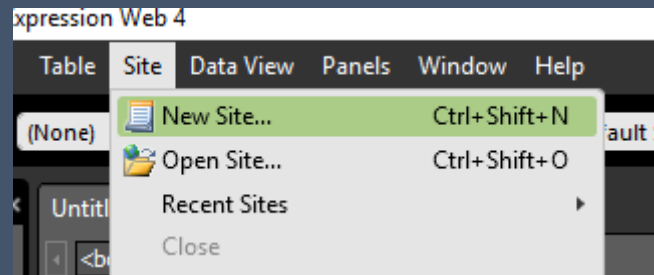


Defining the Site

- Where you save things is really important when making a website
- You need to create a 'site folder' in your area where you will save **everything** that will be part of your site – pages, images etc.
- This needs to be kept in the same place!



Defining a Site





Site View

The screenshot displays the Microsoft Expression Web 4 interface in Site View mode. The main window shows the contents of the 'H:\avengers_website' folder. A table lists the files in the folder:

Name	Title	Size	Type	Modified Date	Modified By
default.html	default.html	1KB	html	06/06/2019 12:25	NEWCASTLE\64449

The interface includes several panels: 'Folder List' on the left showing the site structure, 'Tag Properties' and 'CSS Properties' at the bottom left, 'Toolbox' and 'Snippets' on the right, and 'Apply Styles' and 'Manage...' at the bottom right. The Windows taskbar at the bottom shows the system tray with the date and time: 12:25, 06/06/2019.

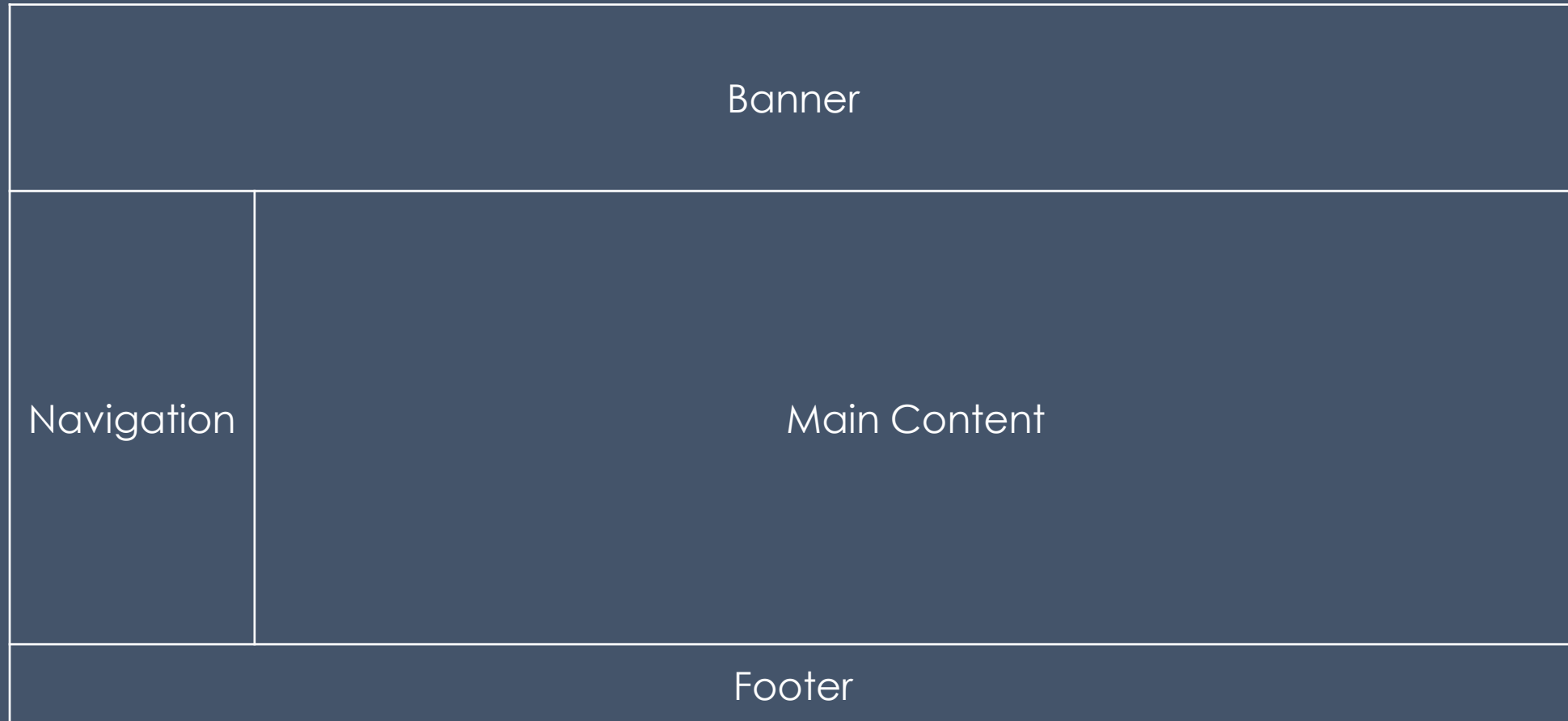


What do we mean by Layout?

- Looking at how the page is broken up into sections that contain certain content
- Separate sections are typically created for
 - The banner
 - The navigation / buttons
 - Main content
 - Footer with additional information or links
- Usually this achieved by creating tables – although the outline of the table cells is typically not visible

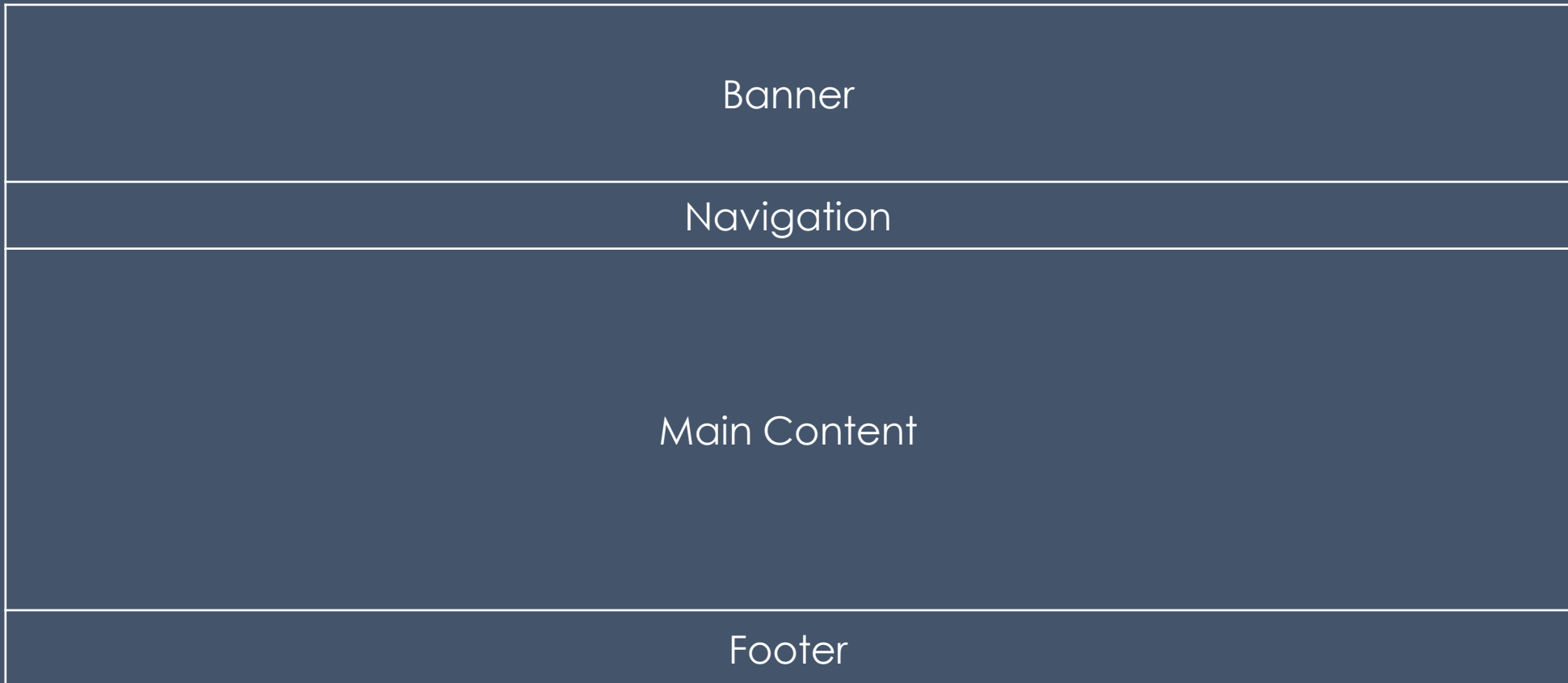


Common Examples





Common Examples





Layout

- The examples given are what you may think of as being ‘traditional layouts’
- Many variants of these
- Navigation sometimes can be via a pop-out menu
 - Saves space on the page
 - Allows quick access to more pages – as opposed to having to go through other menus or pages

