



St Mary's Catholic School Information about St Mary's



Detailed information about the school can be found on the school website at <http://stmarysnewcastle.co.uk>. On this website there are links to many documents which give lots of information about our ethos, academic achievement, primary school links, school climate, the taught curriculum and extra-curricular activities, as well as the spiritual life of the school. These documents include the documents listed below:

Main School Prospectus

<http://www.stmarysnewcastle.co.uk/st-marys-catholic-school-prospectus/>

Sixth Form Prospectus

<http://www.stmarysnewcastle.co.uk/sixth-form-prospectus/>

Ofsted inspection reports

<http://www.stmarysnewcastle.co.uk/ofsted/>

Diocesan inspection report

<http://www.stmarysnewcastle.co.uk/diocesan-inspection/>

Newsletters

<http://www.stmarysnewcastle.co.uk/newsletters/>

St Mary's Shine Bulletins

<http://www.stmarysnewcastle.co.uk/shine-bulletin/>

School Information

St Mary's is a very successful, popular and happy school, rated Outstanding by the Diocese and Ofsted. We became an academy in 2013 and enjoy outstanding facilities in a new building which opened in 2011. We are a National Support School, increasingly engaged in school to school support, and became a Teaching School in June 2017. Opportunities for professional development are, therefore, wide-ranging and an added attraction for potential new staff.

St Mary's uniqueness – the only mixed, Catholic secondary school in the city

We are the only mixed, Catholic secondary school in Newcastle and are proud of our Catholic distinctiveness. We aim to live by the message of the Gospel in every aspect of school life and we take Christ as our example. We work closely in partnership with our Catholic partner primary schools from where most children come and with whom we share the same ethos. Our school is also enriched by children who come from other schools in Newcastle and beyond, including from overseas. We welcome all students equally to St Mary's from a variety of Faith backgrounds. Everyone who chooses St Mary's can be assured of the best possible education.

The core values of St Mary's Catholic School

An excellent school which celebrates each student's unique set of God-given gifts and talents and ensures that students use their gifts and talents to the full.

A school which strives to live by the message of the Gospel, offering students opportunities for spiritual growth and development, whatever their faith background, supporting them on their individual journey and preparing them for their life to come.

A school which strives for excellence in everything it does, whether in the academic achievement of our students or in the quality and range of opportunities which we provide for their all-round development outside the classroom.

A school which puts learning and teaching at the heart of school life and prepares students really well for the next stage in their education, whether at University or in the workplace.

A school of which we can all be rightly proud, offering our students a first class education and helping them to develop as well rounded individuals who are ready and able to take their place in the wider world, as happy, confident and self-aware young adults with a sense of service to their communities.

Exam success at St Mary's

Our students' progress and attainment are excellent, among the very best in the north-east and UK.

- In 2018, 76% of pupils achieved a Standard Pass (level 4) or better in English and Maths GCSE
- 55% of pupils achieved a Strong Pass (level 5) or better in English and Maths GCSE
- +0.67 Progress 8 score in 2018 was in the UK top 10%. This has been the case in 4 of the last 5 years
- Attainment 8 score of 55.01 in 2018 was also one of the very highest regionally and nationally
- 43% of A Level grades in 2018 were A*-A, with 68% at A*-B. 100% pass rate. All records for the school

In the Sixth Form, our students have an excellent track record of gaining a place at their first or second choice university. We have successfully prepared students for entry into leading universities such as Oxbridge, St Andrews, Durham, Edinburgh and Russell Group Universities to study Medicine, Law, Architecture, Maths, History, Languages and many other challenging degree courses. Sixth Form numbers have increased significantly over the last few years and will reach about 230 students by September 2019, all following a wide range of A Level courses. It will grow to around 300 students in the next couple of years.

Positive climate for learning at St Mary's

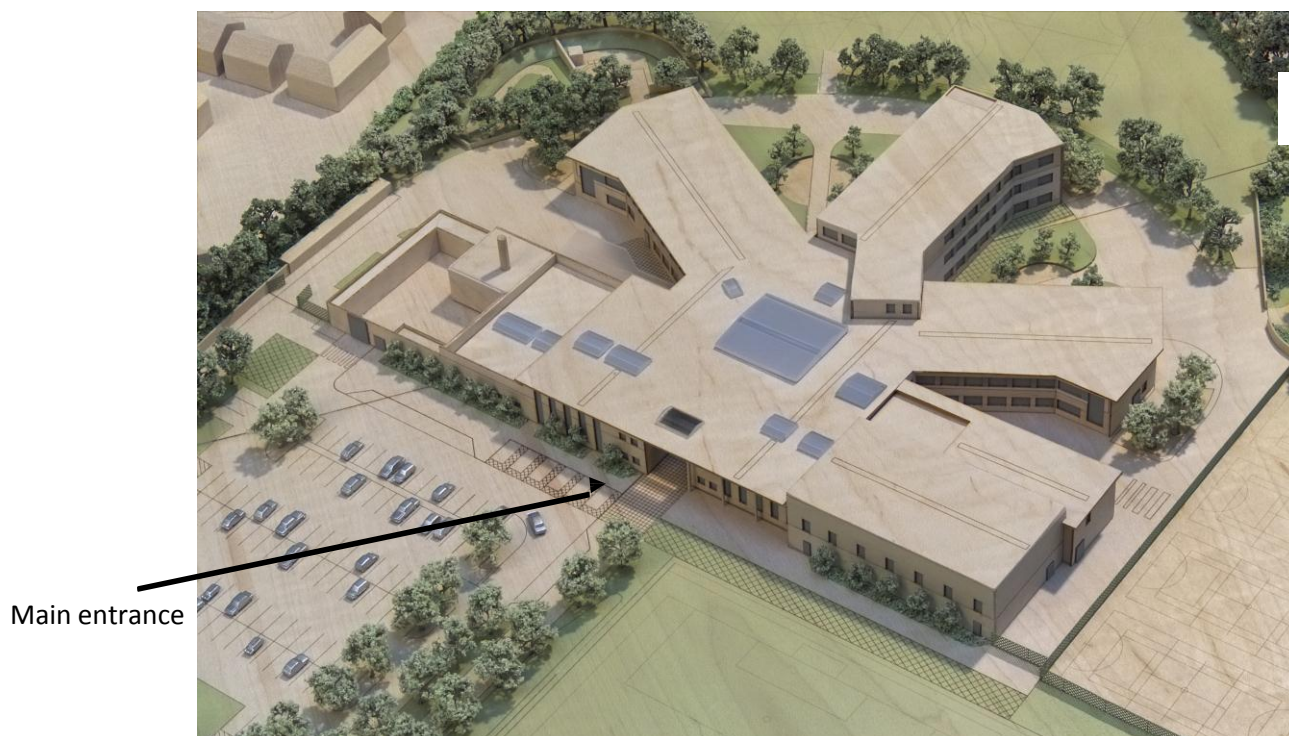
You will find St Mary's to be an orderly, well-disciplined community, where learning flourishes for all students. Student behaviour is outstanding. We have high standards and high expectations of students regarding behaviour and readiness for learning. Students know where they stand. Rules are simple, sensible and consistently applied so that students feel safe and secure and know what is expected of them. We are smaller than some of the very large secondary schools in the city and we believe that this is a distinct advantage, as our smaller tutor groups and class sizes allow us to get to know our students really well and offer excellent pastoral care.

We praise students for their efforts and celebrate their achievements in many different ways. We believe that such a positive climate promotes learning and inspires students to fulfil their potential. Excellent student behaviour has played a major part in our record results in the recent years. Students of all abilities and backgrounds mix really well together at St Mary's and there is a positive and happy atmosphere in the school.

Partnership with Parents

We place a high value on working closely in partnership with parents to ensure the best for your children. Any parent who decides to entrust their child into our care can be assured that he or she will receive an excellent, all round education.

St Mary's – new school building opened in 2011



We are all still very excited about working and learning in the relatively new school. We are sure that our new state-of-the-art facilities will be a catalyst to even further improvement and achievement for our students in the future.

At the heart of the school is our chapel, which overlooks a large, two storey atrium space where students gather before school, at break and lunchtimes. This space is also used for teaching, display or presentations, after school or evening activities. Around the sides of the atrium are the pastoral offices where students can find their Head of Year and Form Tutors.

The three main teaching blocks radiate outwards from the atrium. Two of the teaching blocks are two storeys and the third is a three storey block. It is on the top floor of this block that the Sixth Form have a dedicated suite of rooms, study area and café style work space.

Departments have suites of classrooms and other teaching areas in the three main blocks linked by corridors, staircases and lifts. The school hall and dining room can be found along the front of the school, together with an impressive range of sports facilities. These facilities include a multipurpose sports hall, fitness suite and activity studio (gymnasium). The Inclusion Suite and library are also in this area. All areas of the school are easily accessible from the atrium.

Externally, we have an extensive range of sports areas, a memorial garden, a wildlife area, seating areas for students and outdoor teaching spaces.

Due to continual high demand for places at St Mary's, we funded and built an extension to the new school building which opened in September 2016. This added the equivalent of 8 classrooms, to accommodate an anticipated increase in school numbers.

In 2018 we also fully refurbished our Sixth Form area, providing first-class and highly innovative facilities to support the teaching and learning of our A Level Students. Overall, the school is a purposeful and exciting design which we all look forward to enjoying for many years to come.

