

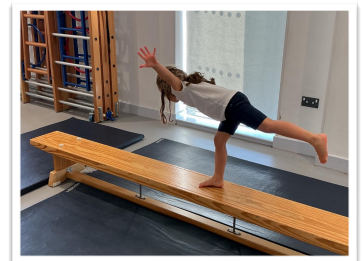
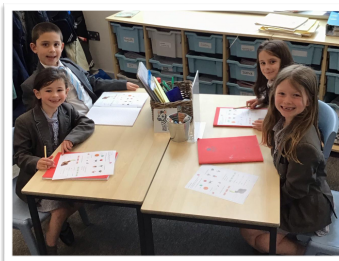
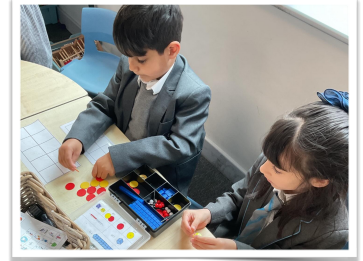
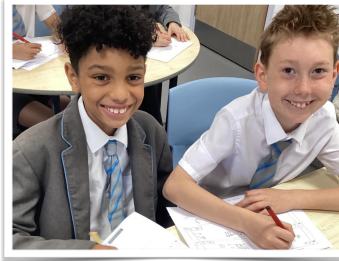
# Weekly Newsletter

## SCREEN TIME GUIDANCE

New screen time guidance has recently been published by the government alongside *Best Start in Life*. Whilst the guidance is mainly aimed at younger children, it contains useful advice for all young people:

- **Slow paced content:** fast-paced, over stimulating social media style videos may affect how young children learn to concentrate.
- **Choose safe content:** use parental controls to block inappropriate, harmful content.
- **Avoid social media:** social media isn't made for young brains so should be avoided.
- **Avoid AI:** don't let young children use AI toys, tools or chat bots until there's more evidence on how they may affect your child.

**[THE FULL REPORT CAN BE READ HERE](#)**



## EASTER EGGS APPEAL THANKS

Thank you to everyone who has supported our work with the Children's Adventure Farm Trust this year. Our latest focus was the Easter Egg collection and we have this week received the following thanks from Hannah at CAFT:

*Huge thanks for your help with our Easter Egg appeal this year. Your continued support of CAFT is so precious to us and I am very grateful to have the school's continued engagement.*

*I have attached a little update here so you know the full impact & importance of the seasonal programmes we provide. These would of course, not be possible, without the support of our school communities.*

[Hannah has sent across a lovely update document which can be viewed here.](#)

## SUMMER FAIR UPDATE

Thank you to everyone who joined us last night for the launch event for the PTA Summer Fair which will take place on **Saturday 20th June**. This is one of the biggest and best events in the PTA calendar but takes a lot of organisation!

We continue to need lots of offers of support from parents so please do consider if you are able to offer support either in the lead up to the event or by offering a short amount of time on the day to supervise one of our stalls.

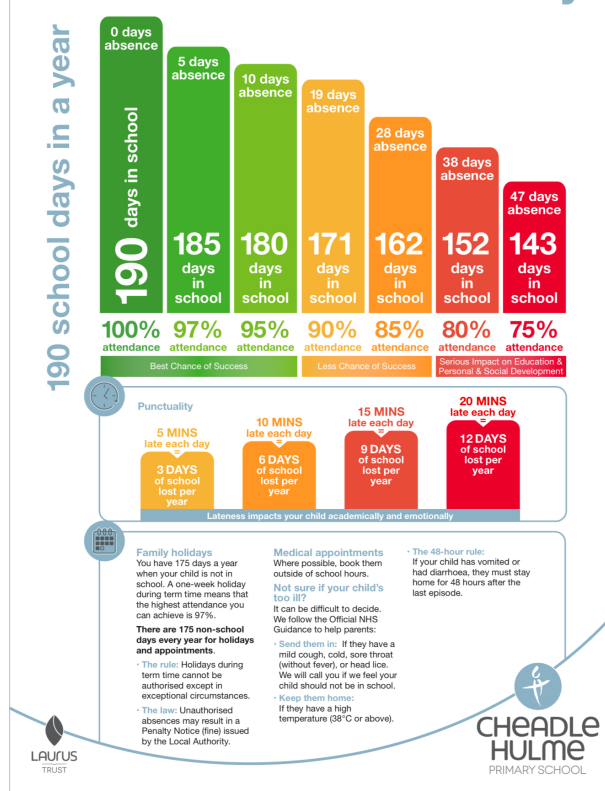
**We are particularly looking for people to operate the BBQ this year.** If you think you can help in any way, please contact Jenny via [pta.chps@gmail.com](mailto:pta.chps@gmail.com).

## ATTENDANCE & PUNCTUALITY

Absence and lateness of any kind has a detrimental impact on your child's academic and personal and social development. Missing just a day or a small part of the morning has a negative impact outside of just the time missed due to the sequential nature of how the children's learning is planned. As shown in the image below, single days 'here and there' can easily add up to a significant total over a period of time.

Obviously if your child is not well enough to be in school, they should be kept at home. All other absences (including those involving medical appointments which where possible should be made outside of school hours) must be kept to a minimum.

### Attendance & Punctuality



## BLUE BADGE PARKING

Please remember that being in possession of a blue badge does not guarantee a parking space in the school car park nor does it allow illegal parking should the spaces be full.

2025 – 2028



# Rights Respecting Schools

UNITED KINGDOM

unicef

Gold Rights Respecting

## GIRLS CRICKET PROGRAMME

Cheadle Cricket Club are introducing a new *Dynamos* programme for girls in Key Stage 2. The sessions are taking across 8 weeks starting next Tuesday and are totally free of charge!

For more information about this opportunity including how to book a place, [please click here](#).

## DATES FOR THE DIARY

- 4th May - Bank Holiday (School closed)
- 22nd May - Last day of term
- 8th June - INSET Day (School closed)
- 9th June - School reopens
- 17th June - Class photographs
- 20th June - Summer Fair
- 23rd June - Sports Day (AM)
- 25th June - Express Uniform pop-up shop (PM)
- 10th July - Changeover Day
- 22nd July - Open Afternoon
- 24th July - Last day of term