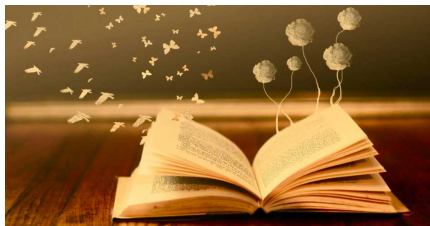


# Weekly Newsletter

## READING AT HOME

Whilst the team here put huge efforts into supporting both your child's ability to read and their enjoyment of books, arguably the best time to really nurture this is at home with their lovely families!



Making reading a daily habit is one of the best things we can do as parents and an absolutely essential part of children's relationship with books and stories, not to mention their relationships with you!

Whether it's supporting your child by practicing their fluency with the FFT books we send home with pupils lower down the school or sharing wonderful stories with them (with either them reading to you or vice versa), the difference you will be making to their ability to master this most important of life skills is massive, not to mention supporting their social emotional development and mental health for which reading has extensive proven benefits.

## Article 3

The best interests of the child must be a top priority in all decisions and actions that affect children.



## DIABETES DAY

Today we marked World Diabetes Day in school. Type 1 diabetes is increasing in children and young people every year with diagnosis possible at any age.

Symptoms to look out for include going to the toilet more than usual, drinking more, showing unusual tiredness and weight loss. For further information on these symptoms and what to do if you are concerned, please click on this link.

More information about the condition and the day itself can be found here.

## SCHOOL CHARITY UPDATE

After the initial launch week for this years school charity, The Childrens' Adventure Farm Trust (CAFT) we are absolutely thrilled to say our fundraising total for them is already at a mammoth £1600!! This is phenomenal total and one for us to be incredibly proud of as a school community.

For more information about this amazing charity, please visit their website here: [www.caft.co.uk](http://www.caft.co.uk)

## BEBRAS CHALLENGE

We are delighted once again to offer the Bebras Challenge for children in Key Stage Two. The challenge, organised by the Raspberry Pi Foundation, introduces computational thinking to children - which is a brilliant way to help them develop their problem-solving skills.

Last year over 3 million children took part! Computational thinking requires pupils to think logically, creatively and systematically. It is useful across the curriculum - not just in Computing or Maths! Children will take part in the challenge on Wednesday, either before school or during lunch.

If you would like to sign your child up, please do so at the link in the message on MCAS. Everyone taking part in the challenge will receive a certificate and there will also be an opportunity later in the year to take part in the Coding Challenge.

## WALKING TO AND FROM SCHOOL

Our older children will be getting additional sessions next week on keeping safe whilst walking to and from school. Areas of discussion will include:

- Road safety
- Stranger danger
- Reporting any concerns they have about anything they have seen or experienced ASAP to school or home
- Their own safe and respectful conduct

It would be really useful if you yourselves could follow this up with your children, particularly if they do walk to and/or from school on their own or with friends.

## PTA UPDATE

**Christmas Fair - Friday 5th December, 5-7pm**

We need your help! Ways to get involved:

- Buy your [tickets](#)
- [Get in touch](#) if you can help for an hour on a stall - the more help we have, the more fun games and stalls we can put on
- Bake a cake - we need lots of bakers to make biscuits, cakes and other sweet treats for our very popular cake stall - **all baking must be nut free.** Please let us know if you can bake something for the fair. There is a prize for the best bake! [Special poster here!!](#)
- Have a teddy sort out - do you have any teddies looking for a new home? Please start gathering your donations for the teddy tombola. All teddies must be clean and in excellent condition
- Donate to our chocolate and bottle tombolas (chocolates and sweets on 28th November, bottles on 5th December) - **all donations must be nut free**

**Wreath making workshop - Wednesday 3rd December, 7pm.** Just a few weeks until this festive evening. Buy your tickets [here](#).

Finally, a huge thank you to the staff and parents who supported our autumn disco last week. The children had a brilliant time and showed off some amazing dance moves and the event raised £1475! These funds will go towards our next exciting project and we look forward to sharing details about this with you all soon!!

## SHOPPING FRAUD

In the lead up to Christmas, the Cyber and Economic Awareness Service and Greater Manchester Police are attempting to reach as many families as possible to highlight the dangers of online fraud.

For many of us this may be the main form of present shopping over the next few weeks so [please see this poster for tips on how to do so safely and securely.](#)

## JAMAICA APPEAL

Following the devastating hurricane in the Caribbean last month, one of our families along with *Caribbean Flavas* is co-ordinating fundraising efforts and relief work. Thank you to those of you who have contributed to this already. The next shipment will be focusing on school supplies so please send in any further donations with your children.

[UNICEF are also doing an online appeal which can be accessed here.](#)

## KIDS CLUB / PRE SCHOOL

Please ensure all Kids Club and Pre School payments are kept up to date.

Tickets for this years Kids Club Christmas raffle will also be on sale from Monday priced at £1.50 pre strip.

## CROSS COUNTRY

Our next cross country meet is on Sunday 22nd Nov, Mr Ross will be in attendance. All pupils from KS2 are welcome - [full details of this can be found here.](#)

## COLLECTING CHILDREN FOR APPOINTMENTS

Where possible, all medical appointments should be made out of school time.

If you do need to collect your child from school during the day, please ensure you arrive well before needed as it may well take a little time for your child to be collected from their classroom.

## DATES FOR THE DIARY

3rd Dec - Christmas Dinner

5th Dec - PTA Christmas Fair (Christmas Jumper Day)

10th Dec - EYFS Christmas Performance

12th Dec - KS2 Cinema Trip

15th Dec - EYFS (9.30am) & KS1 (2pm) Nativity

16th Dec - KS1 (9.30am) & EYFS (2.30pm) Nativity

17th Dec - KS2 Carol Concerts (10am & 6pm)

17th Dec - KS1 Theatre Trip

18th-19th Dec - Christmas Parties

19th Dec - last day of term

5th Jan - INSET Day

6th Jan - Start of term

16th Jan - Year 5 Assembly (2.30pm)

30th Jan - Year 2 Assembly (2.30pm)

13th Feb - Year 1 Assembly (2.30pm)

27th Feb - Year 4 Assembly (2.30pm)

24th April - Year 3 Assembly (2.30pm)

1st May - Reception Assembly (2.30pm) - **please note change of date)**