



The Castle Partnership Trust
ACHIEVE BELONG PARTICIPATE

Orchard Grove Primary School



Our aim is for every child to achieve, participate and belong, and this is at the heart of everything we do at The Castle Partnership Trust



- KEY:**
- Red line boundary
 - SOFT LANDSCAPE ELEMENTS:**
Refer to drawing 09140 Landscape Planting Plan for details.
 - Existing hedgerow planting to be retained
Refer to drawing 09101 Tree Retention and Protection Plan for details
 - Proposed tree planting
Refer to drawing 09420 for tree pit details.
 - Native woodland shrub planting
 - Ornamental shrub planting
 - Wildflower seeded areas
 - Grass seeded areas
 - Sports area with grass, markings and drainage to specialist design team
 - Landforms within grassed areas

Existing Hedgerow to Comeytrove Road to be retained

Proposed Habitat Area with wildflower / meadow seed mix and native tree planting

40 m

2.1m high weld mesh fence to boundary

Proposed native woodland shrub planting boundary edge

Proposed area of wildflower / meadow grass with potential for SUD's to aid surface water management and location for surplus soil to be placed.

Formal Hard Play Area¹ Tarmac surface MUGA with court markings (tbc with the school).

Gated Vehicle Entrance

Gated Pedestrian Entrance

2.1m high weld mesh fence to boundary

Gated maintenance access to Bin Store for roadside collection_tbc This requires review of Spine Road Levels to ensure appropriate gradients can be achieved

U13/14 Football Pitch

Mini Football

Mini Football

Hardstanding Play Area

Nursery Path

Parking Area

1st Bay

2nd Bay

3rd Bay

4th Bay

5th Bay

6th Bay

7th Bay

8th Bay

9th Bay

10th Bay

11th Bay

12th Bay

13th Bay

14th Bay

Area for future orchard tree planting

Rose Cottages

Hoops Cottages

Existing Hedgerow / Hedge planting surrounding Cottages to be retained

Area for future Outdoor Teaching Structure

Potential area to mound / contour site soil

Proposed native woodland shrub planting boundary edge

External door restraint barriers to be fixed to outward opening doors

Cycle shelter & scooter rack final size tbc containing 24nr stands = 48 cycles with provision for 8-12nr scooter rack separate area with 4nr stands for staff cycles

Parking Area subject vehicle tracking
Parking Standards Require:
42nr parking bays
4nr accessible bays
2nr motorcycle bays

4nr cycle stands for staff
24nr cycle stands for students & scooter rack
4nr visitor stands - short stay (uncovered)

dotted outline bays indicates future 3FE extension parking requirement.

Bin Store_final sizes tbc timber hit & miss boarding 1.8m high with access gates

Native woodland shrub planting

Ornamental shrub planting

Wildflower seeded areas

Grass seeded areas

Sports area with grass, markings and drainage to specialist design team

Landforms within grassed areas

The Trust

The Castle Partnership Trust is The Castle School, Court Fields, Wellesley Park, IKB and Orchard Grove. It is founded on the principles of giving every child in our local community the very highest quality education, to see themselves as successful and to participate in enrichment and learning. Orchard Grove will have at its core the Trust's commitment that:

- **Every Child Achieves**
- **Every Child Belongs**
- **Every Child Participates in learning, enrichment and the community**

The Castle Partnership Trust is committed to the principle that every child will feel a sense of belonging and that they are important and contribute in their own unique way as well as collectively building a positive, enthusiastic and supportive community that is based on mutual respect and support. There is assumed success throughout The Castle Partnership Trust.

Orchard Grove will centre itself firmly in the heart of it's local community and support it by ensuring pupils have a clear sense of what makes a good citizen and a good neighbour. Pupils will have a strong sense of themselves in the local, national and global context so that they have clear sense of the responsibility they have to others, in the present and in the future.

Orchard Grove will create an environment where children, staff and the community can cultivate a positive and progressive school culture around sustainability and education.

Within the setting of Somerset's first net zero carbon school, children will be inspired by a unique curriculum that is preparing them for life-long learning and a positive impact in the world.



Orchard Grove Primary School

The Trust strives to ensure that every single child in our care achieves, belongs and participates in learning, enrichment and the community.

Pastoral support is exemplary in ensuring that barriers to learning are removed, that children participate and feel valued for their own intrinsic worth.

Early Years provision will form the bedrock of our children's outstanding education and personal development. Children will leave Reception class with a sense of themselves as both individuals, and as part of their own community.

Kindling the interest and igniting the spark of enthusiasm is the key to engendering real learning. Securing children's commitment to their own learning is a vital part of our vision. In The Castle Partnership Trust, we work for the children; they know this, and we foster the belief that they work for themselves and not to please their teachers.

Every child will be taught: literacy and English, numeracy and Mathematics, science and STEM (including programming/coding/computing), design technology, humanities, languages, the arts (including art and design), health and wellbeing (including PE and sports). There will be a strong emphasis on developing competency and mastery of basic core skills in English and Mathematics, as well as personal development through PSHE and citizenship. Whilst the core subjects will be taught explicitly, other subjects will be taught through project and topic-based curriculum to ensure that skills are embedded and that children learn deeply and have mastery of skills.

Children are naturally curious and excited by new things and we will harness and stimulate that energy through focus on the environment and sustainability. Evidence shows that future careers for this generation will be strongly embedded in STEM (Science, Technology, Engineering and Mathematics) fields. We prioritise that through our curriculum, our children will be strongly equipped for their future to make positive impact and change within their communities.



Parents - Building strong relationships



Building on the strong relationship we will have developed at Orchard Grove's Bright Sparks Nursery, we will mirror this system in the primary school. The school is a key support for parents in bringing up their child/ren and as a school, we will advocate the values and principles that we have embedded in our curriculum so that parents are strengthened and informed about parenting and how to support their child best. We place strong significance on the partnership between the child, the family and the school.

Special Educational Needs and Disabilities (SEND)

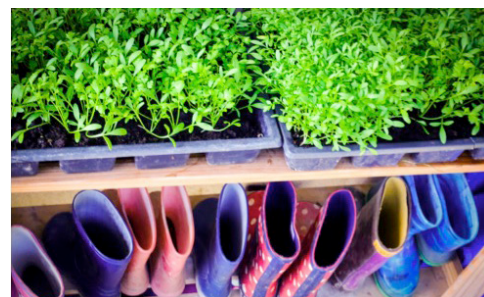
The Trust has a deep commitment to ensuring that every child in the Trust achieves, belongs and participates. As a priority, there is a Trust SEND team which is focused on every child with SEND as well as identifying any potential SEND needs in others as early as possible.

Health and Wellbeing

This is a crucial part of our curriculum. This covers sports and PE, food and health, PSHE and philosophy for children.

Through sports and PE, children will develop physically and learn teamwork, healthy competition, experience of 'failing forward to succeed and learn' – a key part of our character education.

In the Early Years and through Key Stage 1, children will develop fundamental movement skills and coordination. They will be coached in improving such motor skills so they become agile and coordinated which will positively affect their ability to learn to write and to manipulate tools, as well as increasing agility, balance and coordination.



Bright Sparks Nursery

The Early Years provision at the new school will ensure that children become confident and capable in a safe, healthy and enabling environment. The characteristics of effective learning at the core of Bright Sparks will ensure children's 'school readiness' and gives children the broad range of knowledge and skills that provide the right foundation for good future progress through school and life.

Every child deserves the best possible start in life and the support that enables them to fulfil their potential. The Bright Sparks and Orchard Grove teams will work closely together with our families to ensure that the curriculum of early learning is sequenced effectively and that children experience rich opportunities for learning, both indoors and within the natural environment.



To support families, the nursery will:

- Appoint key workers whose responsibility is to be the direct link between family and nursery.
- Give parents the chance to join their children in Play Workshops so that families can play constructively and creatively with their child/ren, learning from experts and working with their children's teachers so that we know your child well and can provide the very best for them.

The key person for every child will maintain the stability of that relationship as a priority. We will encourage parents to be highly involved in their child's education.

The Trust is absolutely committed to supporting parents in bringing up their children the best they possibly can and will do all it can to help parents by providing expertise and support, helping new parents to be the best they can be.

We will build effective and positive relationships with health professionals and other agencies so that a child's needs are quickly identified and planning takes place to ensure their progress.

For the Trust, this is the first of a 14-year relationship and it is essential that we get this right and ensure that parents understand that we are helping them bring up their child/ren.

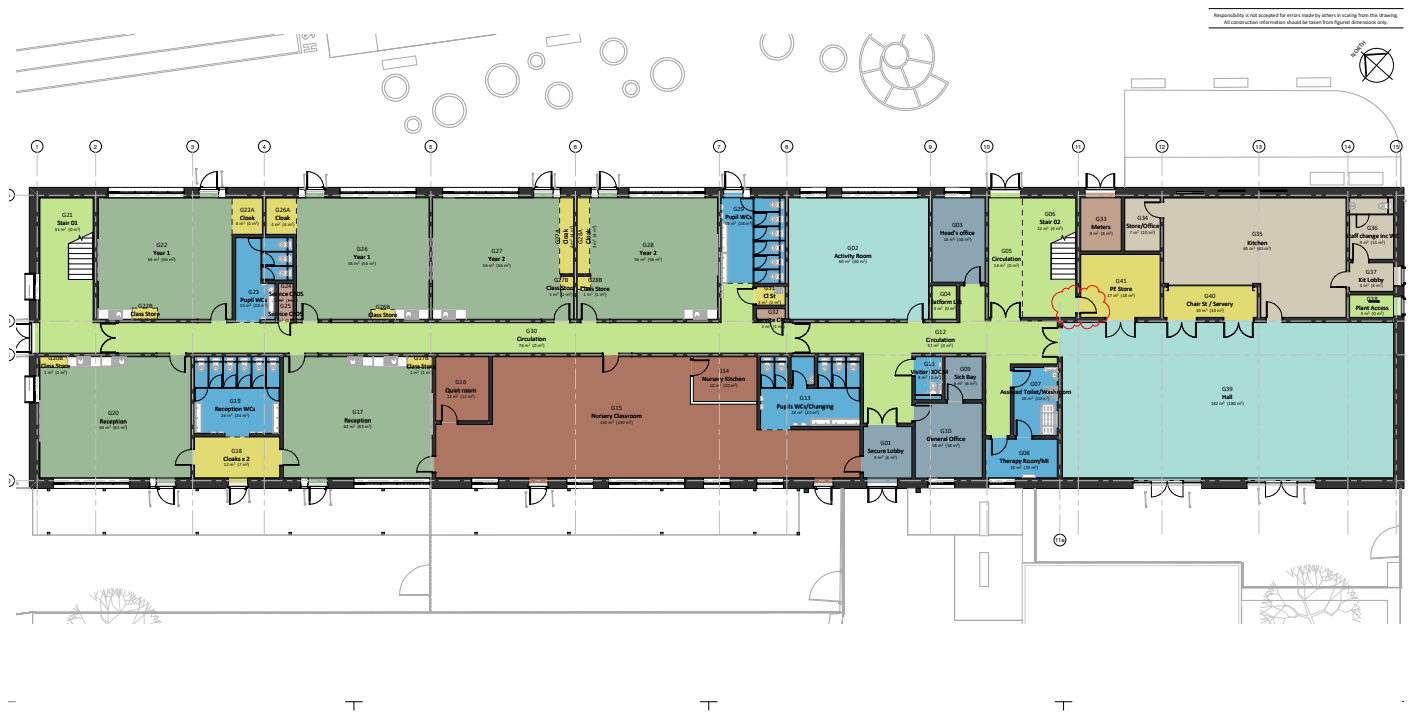
Enrichment and Extra Curricular Activities

Enrichment is a feature of the Trust and a huge range of enrichment programmes are available to bring the subject to life and to foster a love and thirst for learning.

At Orchard Grove Primary School, enrichment will be a feature as it is at all the Trust schools. Music, dance, drama, art and design will feature prominently alongside sports, science, reading, environment and sustainability. Trips and expeditions will be a feature and support resilience so that children regularly overcome obstacles or are challenging their mind-set and changing their beliefs about what they can and can't do. Children will not say, "I can't", but "I can't yet - what do I need to do differently or learn so that I can?"



Floor plans



If you have any further questions, please contact us on the details below:



The Castle Partnership Trust
 The Castle School
 Wellington Road
 Taunton
 Somerset
 TA1 5AU

Tel: 01823 274073
Email: office@castle.somerset.sch.uk
Website: www.castle-trust.co.uk