

Carr Hill Community Primary School

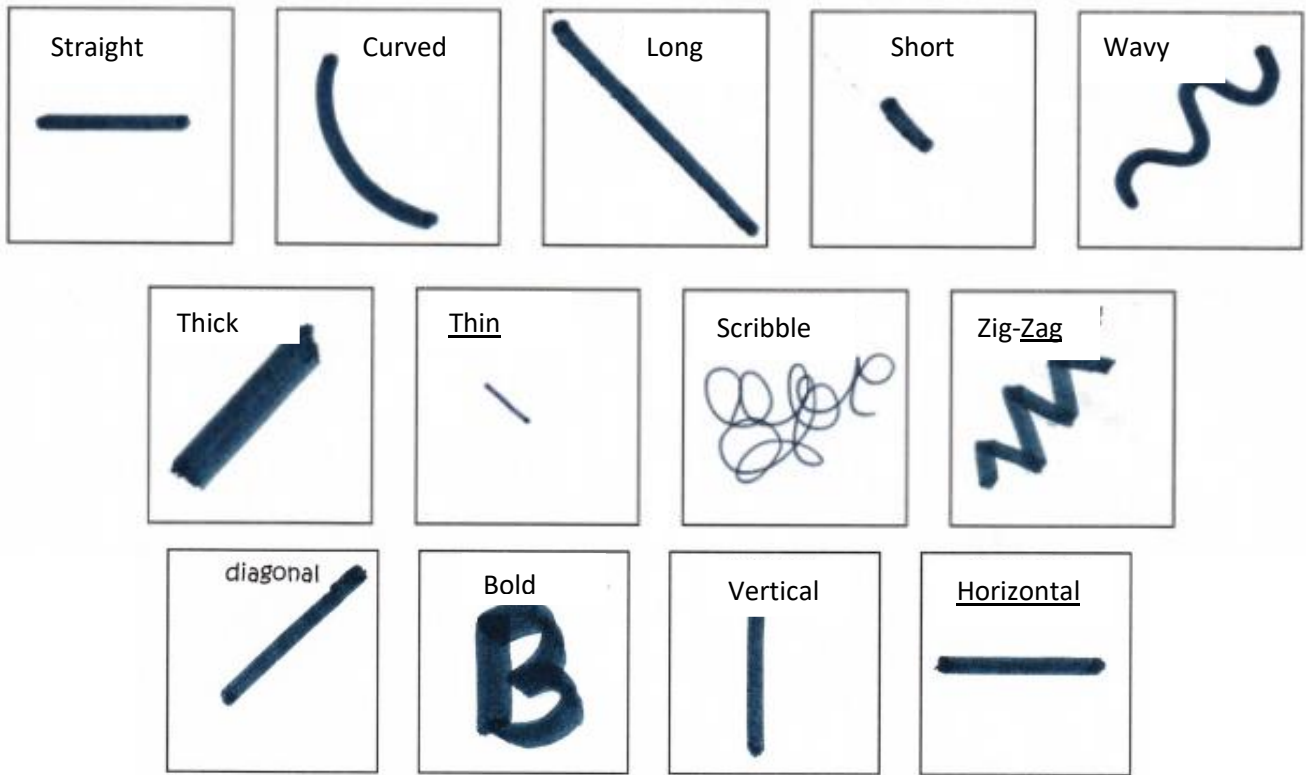


Art Vocabulary Book

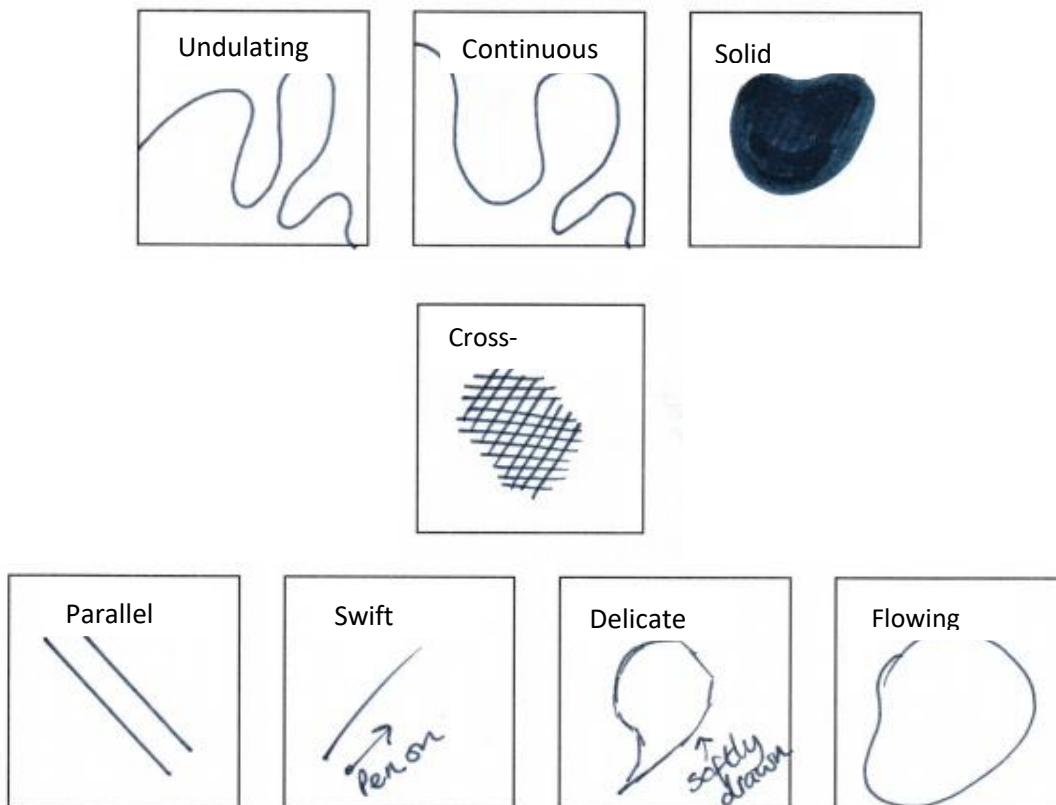
Line

A line is a path left by moving a point. A line can take many forms. A line can be used to show contours, movements, feelings and expressions.

Key Stage 1 vocabulary



Key Stage 2 vocabulary



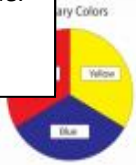
Colour

Colour is the element of art that is produced when light is reflected back to the eye.

Key Stage 1 vocabulary

Primary

A group of colours which cannot be made.



Secondary

A colour produced by mixing primary colours.



Bright

Colours that are vivid and bold.



Colour-mixing

Putting two or more colours together to make another colour.



Complementary

A colour that looks good with another colour.

Contrasting

Opposite colours on the colour wheel.

Cool

Containing blue, green or grey.

Warm

Containing red, yellow or orange.

Shade

A slight difference between two colours



Key Stage 2 vocabulary

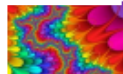
Bold

Having a strong appearance



Vibrant

Bright and striking



Subtle

Understated



Pale

Little colour or pigment



Earthy

Resembling earth in colour



Translucent

Allowing some light through



Opaque

Not able to be seen through



Neutral

Pale grey, cream or beige



Sombre

Dark/dull colour or tone



Pastel

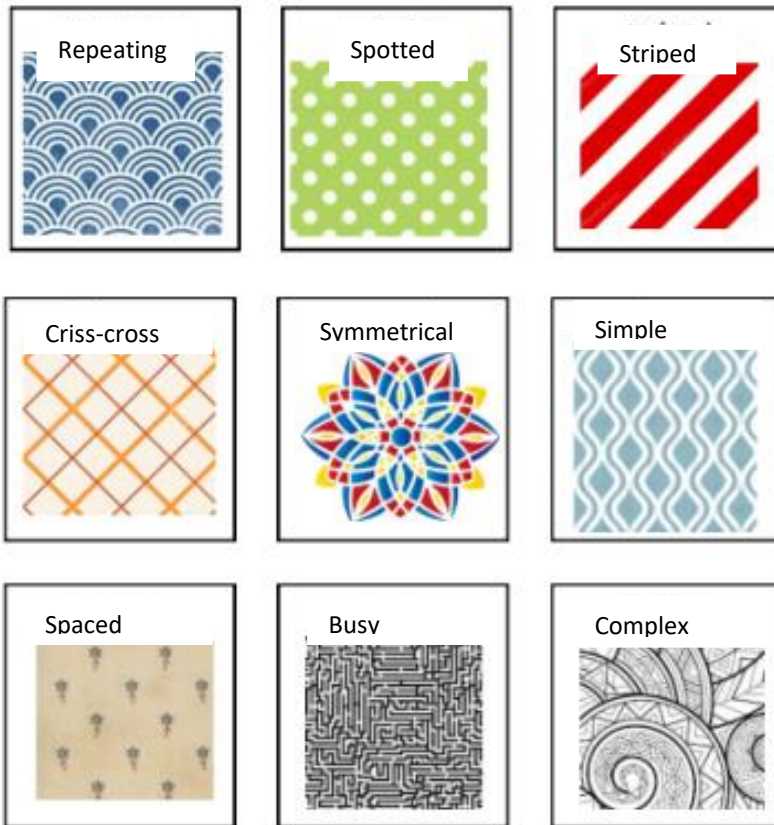
Pale or delicate shade



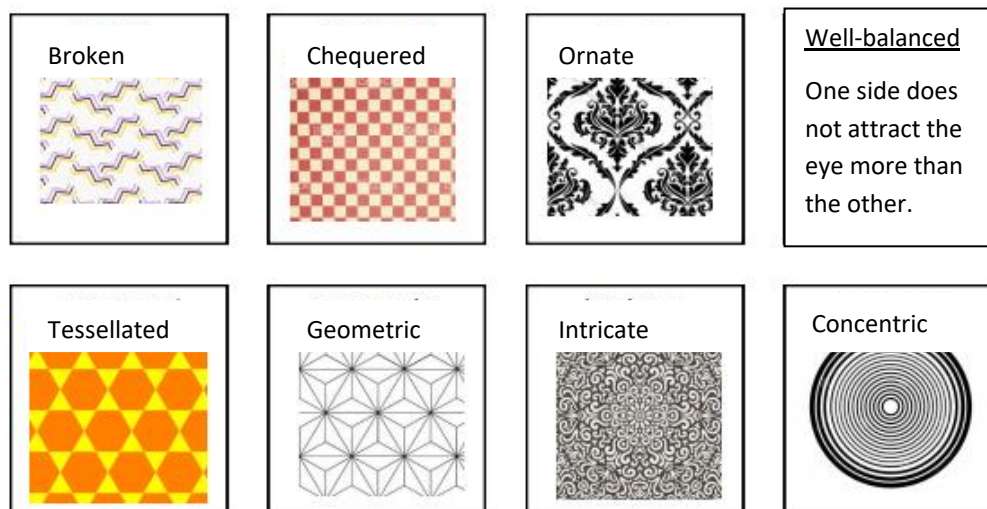
Patterns

A pattern is a design that is created by repeating lines, shapes, tones and colours.

Key Stage 1 vocabulary



Key Stage 2 vocabulary



Shape and Form

A shape is an area enclosed by a line. It can be an outline or shaded in. Form is three-dimensional (3-D).

Key Stage 1 vocabulary

2D Shape

Having two dimensions such as width and height.

3D Shape

Three dimensions.

Flat

A flat shape is a shape with 2 dimensions.

Curved

A curved line can be geometric like the arc of a circle.

Symmetrical

It is the same on both sides.

Regular

Regular shapes have equal sides and interior angles.

Coiled

To wind into rings or spirals.

Twisted

A convention of representation where something has been twisted.

Rounded

A shape with a curved line that encloses a space.

Key Stage 2 vocabulary

Angular

Forming an angle.

Bulbous

Bulb shaped

Asymmetrical

Not identical on both sides

Forked

Zig-zagged

Geometric

Resembling the simple rectilinear or curvilinear lines.

Irregular

A shape that does not have all sides equal and all angles equal.

Tapering

Becoming thinner or narrower towards the end.

Sweeping

Having a curving line or form.

Curvaceous

Having a smoothly curving shape

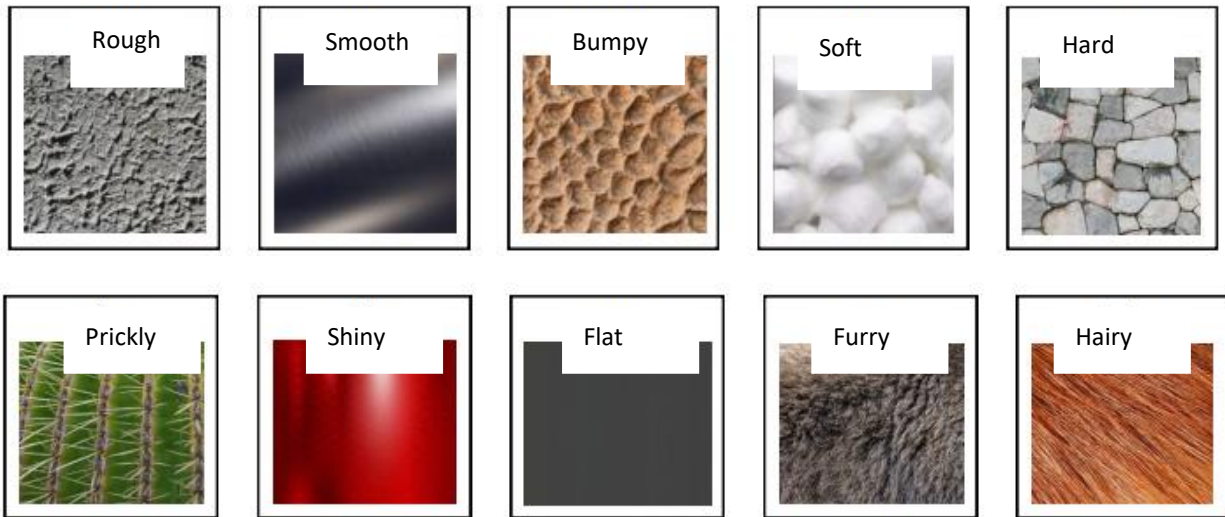
Elongated

Painted with their forms much longer than in reality.

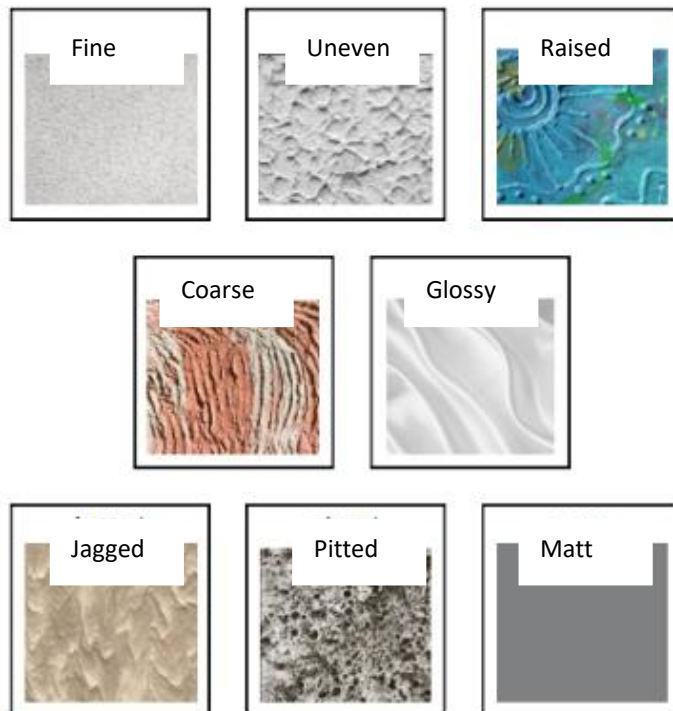
Texture – Actual Texture

Texture is the surface quality of something, the way something feels or looks. There are two types of textures; actual and visual. Actual textures really exist so you can feel or touch it. Visual textures are created using different marks to represent the actual texture.

Key Stage 1 vocabulary



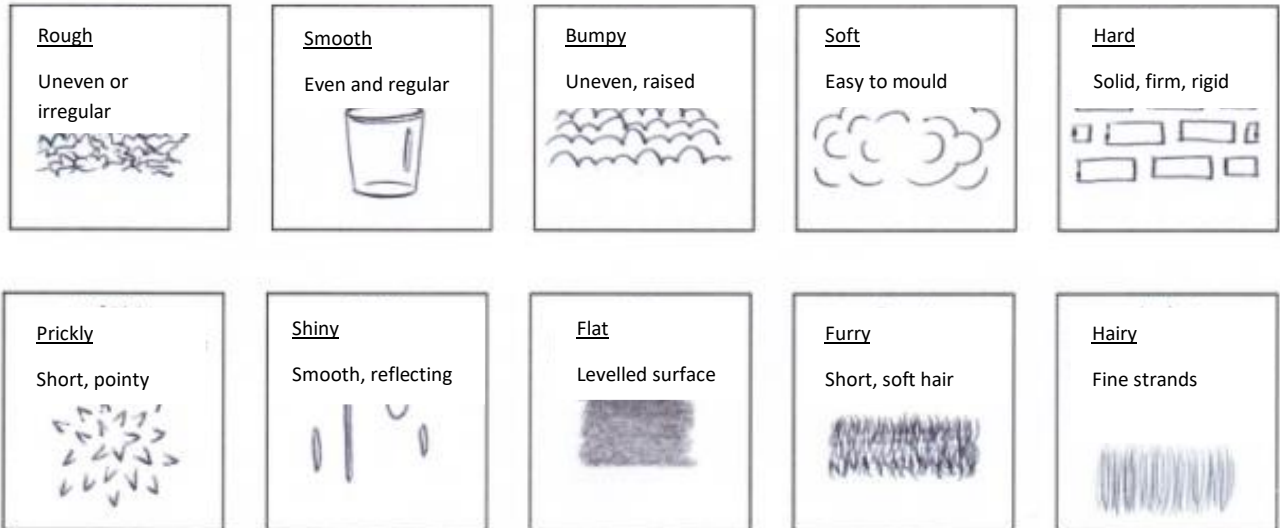
Key Stage 2 vocabulary



Texture – Visual Texture

Texture is the surface quality of something, the way something feels or looks. There are two types of textures; actual and visual texture. Actual textures really exist so you can feel or touch it. Visual textures are created using different marks to represent the actual texture.

Key Stage 1 vocabulary



Key Stage 2 vocabulary

