



# **Year 11 Information Evening**

**Monday 17th October 2022**

**Ms Rouas & Mr Morgan**



# Key points

1. GCSE Exams 2023 Series
2. Attendance
3. Behaviour
4. Assessment dates and information
5. Revision and Resources
6. Interventions
7. Colleges applications and personal statements
8. Key takeaways



# GCSE exams 2023

**GCSE exams are scheduled to go ahead as normal this year.**

- At a national level, grades will be in line with grades in 2019.
- This means that, generally speaking, students have the same chance of getting a grade 9 or 5 at GCSE, as in 2019.
- Formula sheets will be provided in the **GCSE Maths, Physics and Combined Sciences exams**, meaning that students will not need to memorise these formulae or equations
- Students will need to learn and revise the whole specification as normal. Any topic could come up in the exam.
- Please pick up the **letter** with more information on this from your seat.



# Attendance

Here are some **statistical FACTS** about how attendance affects your child's chances of achieving at least five good GCSE passes (Grades 9-5).

If your child's attendance is **95.1%** to **100%** your chances are **69.4%** (You are an odds-on favourite)

If your child's attendance is **90.1%** to **95%** your chances are **51.2%** (You have significantly less chance)

If your child's attendance is **85.1%** to **90%** your chances are **28.2%** (You are an outsider)

Now think about **THIS!** Taking just **10 days holiday in term-time** means that your **MAXIMUM** attendance can only be **95%**. Check above as to how that affects your child's chances.

And also think about **THIS!** Taking "**A day off every couple of weeks**" means that **MAXIMUM** attendance can only be **90%**. Check above as to how that affects your child's chances.



# Behaviour

**Year 11 is academically the most important year of your child's life so far.**

**Homework** - homework is a form of revision and must be completed by all students. Currently this is a concern and we would like parental support. Check in with your child and their homework. (Ask them to show you)

**Lateness** - many students are coming in late to school which affects their start and end of the day. Punctuality is a very important skill and we aim to instill that in every student possible.

**Behaviour in lessons** - It is imperative that students follow instructions and aim for excellence in all lessons.

Year 11 Teachers are encouraged to make home contact for any incidents related to the above.



# Assessment dates and information

**AC1 deadline 7th November (Current grades and predictions)**

**Year 11 PPEs Practical exams**

**12th - 16th December**

**All Year 11 PPEs**

**4th - 14th January**

**Timetable to come out after HT**



# Provisional Summer 2023 timetable

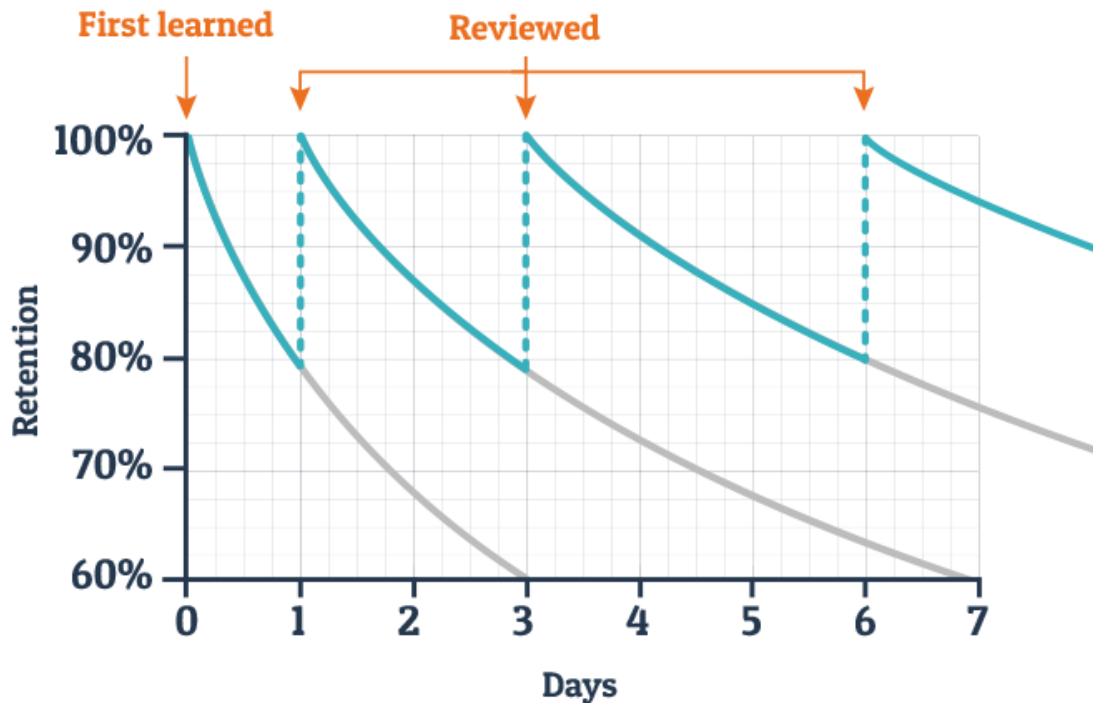
Year 11 Exam Summer Series 2023				
WEEK 1				
	Monday 15th May	Tuesday 16th May		Wednesday 17th May
P1	Religious Studies Paper 1 (1 h 45 mins)	Triple Science Paper 1: Biology (1 h 45 mins) Combined Science Paper 1: Biology (1 h 15 mins)		English Literature Paper 1 (1h 45mins)
P2				
Break				
P3				
P4				
Lunch				
P6	Drama ( 1 h 45 mins)	Information Technology ( 1 h 45 mins)	Sociology Paper 1 ( 1 h 45 mins)	PE Paper 1 ( 1 h 30 mins)
P7				

**Go to Lister Website → Curriculum Tab → GCSEs**

# Revision timetable

## Typical Forgetting Curve for Newly Learned Information

Students **MUST** consistently revise to ensure new learning is embedded into long-term memory.







# Revision timetable

Revision **must** be started early. There is a lot of content to cover in every subject.

Revision timetables should be used by students to **review** what they have been taught in class **that day/week**.

This means the revision timetable should mirror the subjects students have been taught that day or the day before.

The key to success is to consistently review new knowledge and skills recently after they have been taught.

This **WILL** help to prevent last minute panicking, and allows students to take ownership of their achievement.



**Daily 20 minute sessions will help new knowledge stay in your long term memory.  
Use the slightly longer weekend sessions to revisit trickier topics.**

**Weekend Time slots: 30 mins to 45 mins per session.**

**Week day time slots: 20 mins per session.**

	Monday	Tuesday	Wednesday	Thursday	Friday	Saturday	Sunday	
	Maths	English	Maths	Science	Maths	English	Business	10-10:30
	Maths	English	Maths	Science	English	English	Spanish	10:30-11
	Science	History	English	Business	PE			
	Science	History	English	Science	PE	Maths	English	11:30-12
	Business	Science	Spanish	Spanish	RS	Maths	English	12- 12:30
	Business	Science	History	Spanish	RS			
4pm- 4:20pm	Maths	English	Maths	Science	Maths	Science	RS	1pm-1:30
4:20- 4:40	Maths	English	English	Science	Maths	Science	Maths	1:30-2
5- 5:20	Science	History	Spanish	Business	English			
5:20- 5:40	Business	Science	History	Spanish	RS	History	Science	2:30-3



# English

- Please encourage Y11 to **read for pleasure** as much as possible! (Fiction and non-fiction) **Copies of *Lord of the Flies* are also available to buy and should be re-read at home.**
- **Seneca learning:** <https://app.senecalearning.com/> Students will need to enrol in the correct class if they haven't already joined, see next slide. They can work through revision courses on *Macbeth*, *A Christmas Carol*, *Lord of the Flies*, Power and Conflict poetry and English Language.
- **Pix Lit:** <https://englishapp.pixl.org.uk/> Students will need to log in using their School ID = **LR1489**, a User ID = surnamefirstname e.g ahmadabid and a password = **literature**. They can do quotation learning and plot revision on *Macbeth*, *Lord of the Flies* and *A Christmas Carol*.



# Mathematics

## GCSE Maths exam-Edexcel:

3 exam papers 1.5 hours each.  
1 Non-Calculator & 2 Calculator  
Higher paper grade 4-9

Foundation paper grade 1-5

## Homework:

Exam papers

Topic papers

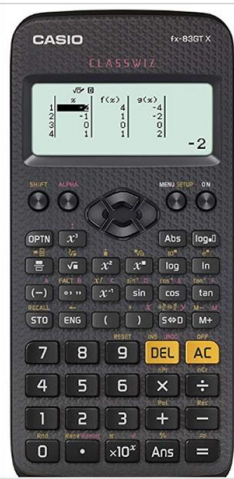
## Revision guide

All year 11 students are expected to have a CGP revision guide.

## Calculator

All students will need a scientific calculator-the newest model is

Casio fx-83GTX Scientific Calculator, Black



# Science



<u>Curriculum route</u>	<u>Number of lessons per week</u>	<u>Number of exams in May/June</u>	<u>Length of exams</u>	<u>Number of GCSEs awarded</u>
AQA Triple Science	7	6	1hr45	3: Biology, Chemistry, Physics  G4-9
AQA Higher Combined Science Trilogy	6	6	1hr15	2 GCSEs from:  4/3 to 9/9
AQA Foundation Combined Science Trilogy	6	6	1hr15	2 GCSEs from:  1/1-5/5



# Science Revision in Year 11

- This is **additional** to homework set

Recommended resources:

- Revision guide (All students should have one)
- AQA [Specifications](#)
- [Seneca Learning](#) for self quizzing
- [BBC bitesize](#)
- [Physics and maths tutor website](#) (Exam questions for all sciences)
- [AQA website](#) for practice papers



# History

## EXAM BOARD: EDEXCEL

### **Paper 1 - 1hr 15mins: 30% (52 Marks)**

- Medicine in Britain, c1250–present
- The British Sector of the Western Front 1914–18: injuries, treatment & the trenches

### **Paper 2 - 1hr 45mins: 40% (64 marks)**

- Superpower relations and the Cold War, 1941–91
- Early Elizabethan England 1558-1588 (GCSE)

### **Paper 3 - 1hr 20mins: 30% (52 Marks)**

- Weimar and Nazi Germany, 1918–39

**Revision Materials:** [CGP GCSE History Edexcel Revision Guide](#)



# Geography

**Exam Board: AQA**

## **Paper 1 35%: Living with the physical environment (1hr30)**

- Challenge of natural hazards
- The living world
- Physical landscapes in UK

## **Paper 2 35%: Challenges in the human environment (1hr30)**

- Urban issues and challenges
- Changing economic world
- Challenge of resource management

## **Paper 3 30%: Geographical applications and skills (1hr15)**

- Issue evaluation (pre-release material)
- Fieldwork (at Chiswick and Queen Elizabeth Olympic Park)
- Geographical skills

## **Revision materials:**

- [GCSE 9-1 Geography AQA](#) Revision guide, textbook available free online to all students on Kerboodle, and Seneca Learning





# Religious Studies

EXAM BOARD: AQA

## Paper 1 50%:

- Christianity (Beliefs)
- Christianity (Practices)
- Islam (Beliefs)
- Islam (Practices)

## Paper 2 50%:

- Theme A - Relationships and families
- Theme B - Religion and life
- Theme D - Religion, peace and conflict
- Theme E - Religion, crime and punishment

## Revision materials:

- [AQA GCSE Religious Studies A: Christianity and Islam Revision Guide](#)
- [Grade 9-1 GCSE Religious Studies: AQA A Complete Revision & Practice with Online Edition \(CGP GCSE RS 9-1 Revision\)](#)

**Exam Board: AQA**

**Paper 1:**

- The Family and Education  
(incl. Research Methods)

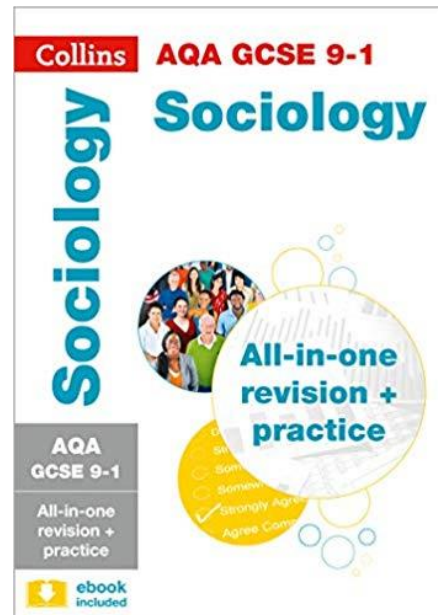
**Paper 2:**

- Social Stratification and Crime & Deviance  
(incl. Research Methods)

**Revision materials:**

- [Collins GCSE 9-1 Revision - Grade 9-1 GCSE Sociology AQA All-in-One Complete Revision and Practice](#)

# Sociology





# Useful websites

[www.revisionworld.com](http://www.revisionworld.com)

<https://www.bbc.co.uk/bitesize/levels/z98jmp3>

<https://app.senecalearning.com/>

<https://quizlet.com/latest>

<https://vle.mathswatch.co.uk/vle/>

<b>A-Level Revision</b>	<b>GCSE Revision</b>
<b>Revision Timetable</b>	<b>Exam Advice</b>
<small>Create a Revision Timetable Create your own individual study planner and revision timetable to help you plan your revision.</small>	<small>Find Exam Tips and Advice Use our exam tips and advice section to help you achieve the best possible grades for your exams.</small>
<b>A-Level Past Papers</b>	<b>GCSE Past Papers</b>



# Revision Techniques

- There are many different revision techniques and you need to find what works for you.
- You should use a range of techniques so that your revision is varied
- Start revision early
- Don't just read your notes. You need to write things down for it to be absorbed into your brain!
- Take breaks!

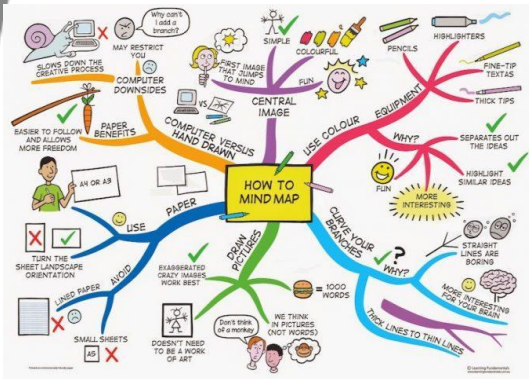
# Mind Maps



- Help to organise information visually. Colours and pictures make things more memorable
- Support in organising a lot of information
- Encourage the generation of ideas and links across contexts and topics.

You should:

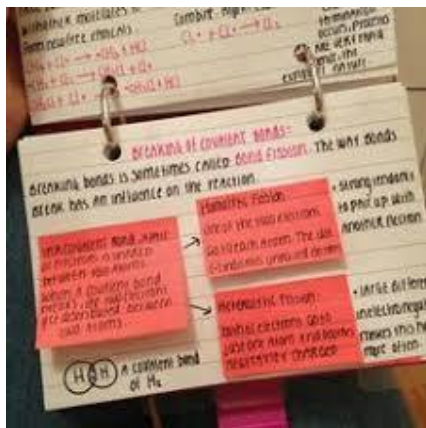
- Use colours and pictures
- Use books and work to write your mindmaps
- start in the middle and work outwards.



# Flashcards/ revision cards



- Flashcards generally have a question on one side and the answer on the other. Test yourself before you look at the answer
- Flashcards help to improve memory as they require your brain to actively recall facts, dates, equations, etc.

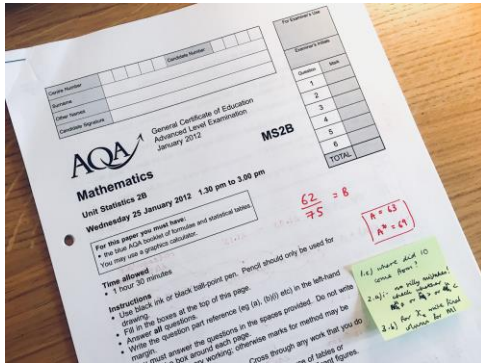


You should

- Use short sentences to help your brain remember
- Have one idea for each flashcard.
- Boost your memory through using pictures and words

# Past Papers

- Supports in putting the knowledge you have learnt into practice.
- Helps you to actively recall topics and highlights areas you may need to revise further
- Supports in helping you to manage your time effectively and be comfortable with the exam paper



You should:

- Use the mark scheme to see how you've done.
- Time yourself but don't set strict limits to start with



# Interventions

After AC1 results, various interventions will start taking place

- NTP will commence after half term
- LAE spanish interventions are already happening
- Night club (with some compulsory attendees)
- Main form of intervention is keeping up with classwork, homework and responding to marking/feedback





# Support continued

During this crucial year, the school will be providing support and help at various levels to **ALL** of Year 11 to allow you to be as successful as possible with your GCSE outcomes. For example:

- RAP meetings - with your HoY
- SLT mentoring
- A list - monitored and supported by the HoY
- Wednesday morning assemblies - led by HOY and HOFa
- Booster classes during **tutor period** - English and Maths
- After school small group **Academic support sessions** - run by your subject teachers
- Supervised **quiet study** areas
- **Weekend revision**
- Quality First Careers advice and guidance

# Post 16 Options Advice and Guidance

As your child starts Year 11 they, and you, need to begin thinking about their **Post 16 Options**.

There are a number of things that the school will do to support you and your child through this process, but **the school cannot make decisions and applications on your child's behalf**.

A document listing all of the **college open evenings** has been shared with year 11 students, this is also on the careers page on the Lister School website.

The most important thing is to make yourself aware of all the Post 16 Pathways that are available in order that you may support your child in making **informed decisions** about their future.





# Post 16 Options Advice and Guidance

In Year 11 your child is guaranteed the following support:

- [College Assemblies](#) (Autumn Term)
- **Post 16 Pathways Day** (Wednesday 30th November)
- **Futures Fair** (Wednesday 30th November)
- **Personal Statement Workshops** (December/January)
- **1-2-1 Independent Careers Advice** (Autumn/Spring Term)
- **Careers Drop in Services** (Termly)
- **Access to the Careers Library**

*Newham Council have launched an e-brochure that highlights the full range of post-16 options available in Newham. The direct link to access this is*

<https://www.newham.gov.uk/downloads/file/5169/16-18-courses-brochure-2022>



Careers



# Post 16 Options Advice and Guidance

## Careers Team Contact Information

- **Ms Rouas** (*Year 11 Achievement Leader*) [sophia.rouas@lister.newham.sch.uk](mailto:sophia.rouas@lister.newham.sch.uk)
- **Ms Begum** (*Careers Officer*) [nazmin.begum@lister.newham.sch.uk](mailto:nazmin.begum@lister.newham.sch.uk)
- **Ms Maulvi** (*Careers Assistant*) [munira.maulvi@lister.newham.sch.uk](mailto:munira.maulvi@lister.newham.sch.uk)
- **Mr Morgan** (*Deputy Headteacher*) [chris.morgan@lister.newham.sch.uk](mailto:chris.morgan@lister.newham.sch.uk)

*\*The Careers Team is able to provide telephone advice to parents / carers upon request\**





# Post 16 Options Advice and Guidance

Additional information is available from the Local Authority website:



[Newham Post 16 Support](#)

[National Apprenticeship Database](#)



# More information

We have created a **year 11 mailing list** through which we communicate with year 11 students.

There will also be a **google classroom** that students can use with links to personal statements and college applications in due course.

Information in this presentation will be available on the GCSE section of the website.

**Go to Lister Website → Curriculum Tab → GCSEs**



# Questions

Any questions?