



# KS4 OPTIONS BOOKLET 2025

A guide to KS4 courses at Redmoor

# MESSAGE FROM THE PRINCIPAL

I hope you are looking forward to the next, exciting stage in your education. As part of the Redmoor Futures Programme, this will be the opportunity for you to succeed in your GCSE examinations and give you freedom of choice at 16 to choose where you will be after Redmoor;

- A Levels
- Apprenticeships
- Vocational courses

Not only that, you will also have the opportunity to do many exciting courses, such as the Duke of Edinburgh scheme and Work Experience, which are only available to our older students. Staff will see that you are that bit older and more independent and treat you accordingly. We have already provided Year 10 and 11 with their own social times and are keen to continue working with you to develop other ideas further.

A move into Key Stage 4 will bring exciting new challenges and the opportunity to have a lot more choice in the subjects you learn. The KS4 curriculum at Redmoor is a mixture of core subjects such as English, Maths, Science, PE and Personal Development along with a variety of optional subjects that will help you reach your chosen Post 16 destination and achieve your future goals.

All the subjects we offer are designed to provide you with useful skills and qualifications that you will use in later life. We are proud to see our students develop into self-assured young adults during the next stage of their educational journey and we are confident they will achieve even greater heights.

This booklet has been designed to help you make the most appropriate choices for you. You will find some information about each of the subjects taught at Redmoor. Consider carefully. Don't rush into choosing; you need to consider what is best for you. There will be a number of opportunities to find out more about the subjects and you should also discuss these important decisions with your parents and carers, your tutor and your subject teachers.

Your form tutor and Year Manager will be the first people to go to with any general queries but all staff are also happy to answer any questions you may have about your option choices, so don't be afraid to ask. Your tutor will check your final choices to ensure that they are suitable for your learning needs and ambitions.

You will get as much out of KS4 as you put into it. I have limitless ambitions for each and every one of you. If we all commit over the next two years to getting you the best possible results, you can look forward with confidence to the further and higher education of your choice.

I wish you every success.



*M Nicolle  
Principal*

# REDMOOR FUTURES AND POST 16

Redmoor Futures is a comprehensive scheme that aims to raise your aspirations, broaden your horizons and empower you to make informed realistic decisions at all key transition points in your education and early career.

Redmoor Futures encompasses the following activities:

- Careers education in PSHCE
- Encounters with local employers
- Work Experience for Year 10 students
- Personalised Careers advice (independent via LEBC)
- CV preparation and interview skills, including a mock interview
- Encounters with further and higher education providers.

We aim to support you with all of your post 16 options for the future by ensuring you understand all the options available to you when they leave Redmoor. Below are the different options you will consider:

**A levels** - Exams at the end of two years . Subjects similar to GCSE but also new subjects to choose from. Progression is often to University or a higher level apprenticeship. Between 5 and 7 GCSE passes at grade 5 are required.

**BTEC** - Technical qualifications in areas leading to industry such as business, engineering, animal care and art to name a few practical and skills-based courses with progression into work, university or apprenticeships. You usually require 5 GCSEs grades 4-9. For some subjects a portfolio is required.

**T-Levels** - A new qualification covering 24 subjects phased in across the country since 2023. Developed in collaboration with employers, content meets the needs of the specific industry you will study . Offering a combination of classroom learning and on the job experience (315 hours of work experience) with progression into work, university or apprenticeships. You usually require 5 GCSEs grades 4-9. For some subjects a portfolio is required.

**Vocational Qualifications** - Trade areas such as construction, hair, beauty, catering and motor vehicle mechanics. Start at level 1 or level 2 no matter what GCSE grades you get. However, you will require either GCSE or Functional skills in English and Maths.

**Apprenticeships** - Apply for a job as an apprentice and work for a company doing something you love. Attend college either on day or block release. There's a minimum wage of £6.40 per hour with some higher level apprenticeships paying around £18,000.



All queries should be addressed to your tutor or

[ldavey@redmooracademy.org](mailto:ldavey@redmooracademy.org)

You may also find the answer to your query on our website.



# KEY STAGE 4 AND WHAT IT MEANS TO YOU

In addition to helping you to prepare for adult life in the real world, we believe the benefits of participating in enrichment activities in our extra-curricular programme are invaluable. We will, therefore not only continue to offer the same extra-curricular activities as in Years 7, 8 and 9 but also develop the enrichment and support programme to offer additional opportunities just for Years 10 and 11.

## Pastoral support

We pride ourselves at Redmoor on the quality of support available to you all. Your year head will transition through to KS4 with you, as will your form tutor in most cases. This ongoing support, along with our comprehensive PSHE programme will help you navigate the GCSE years.

## P6 Extra-Curricular Activities

The wide range of extracurricular activities offered at Redmoor at both KS3 and KS4 means that there is something for everyone. Whatever your ability, you will be offered the chance to develop your talents, learn new skills and test your initiative.

The full schedule for P6 can be found on our website. Here are just a few opportunities that may be on offer to you: Duke of Edinburgh, Work Experience, STEM opportunities, Mentors in Violence Prevention, Performing Arts opportunities, sports leadership, sports events and competitions and personal development opportunities.

## Duke of Edinburgh

We will be expanding our provision for the Duke of Edinburgh award in Year 10 & 11. This award will take place outside of school time. It is highly valued by employers, colleges and universities and can often help when applying for further and higher education courses. It is also really good fun! To find out more please visit <http://www.dofe.org/>

## Trips & Visits

You will continue to have the opportunity to take part in various trips and visits as part of your wide and varied curriculum, especially where there are opportunities in our local community for you to see your GCSE subjects in action. Therefore, trips and visits will primarily be linked to enhancing the GCSE courses you are studying.



**THINK HARD, WORK HARD, GO FAR**

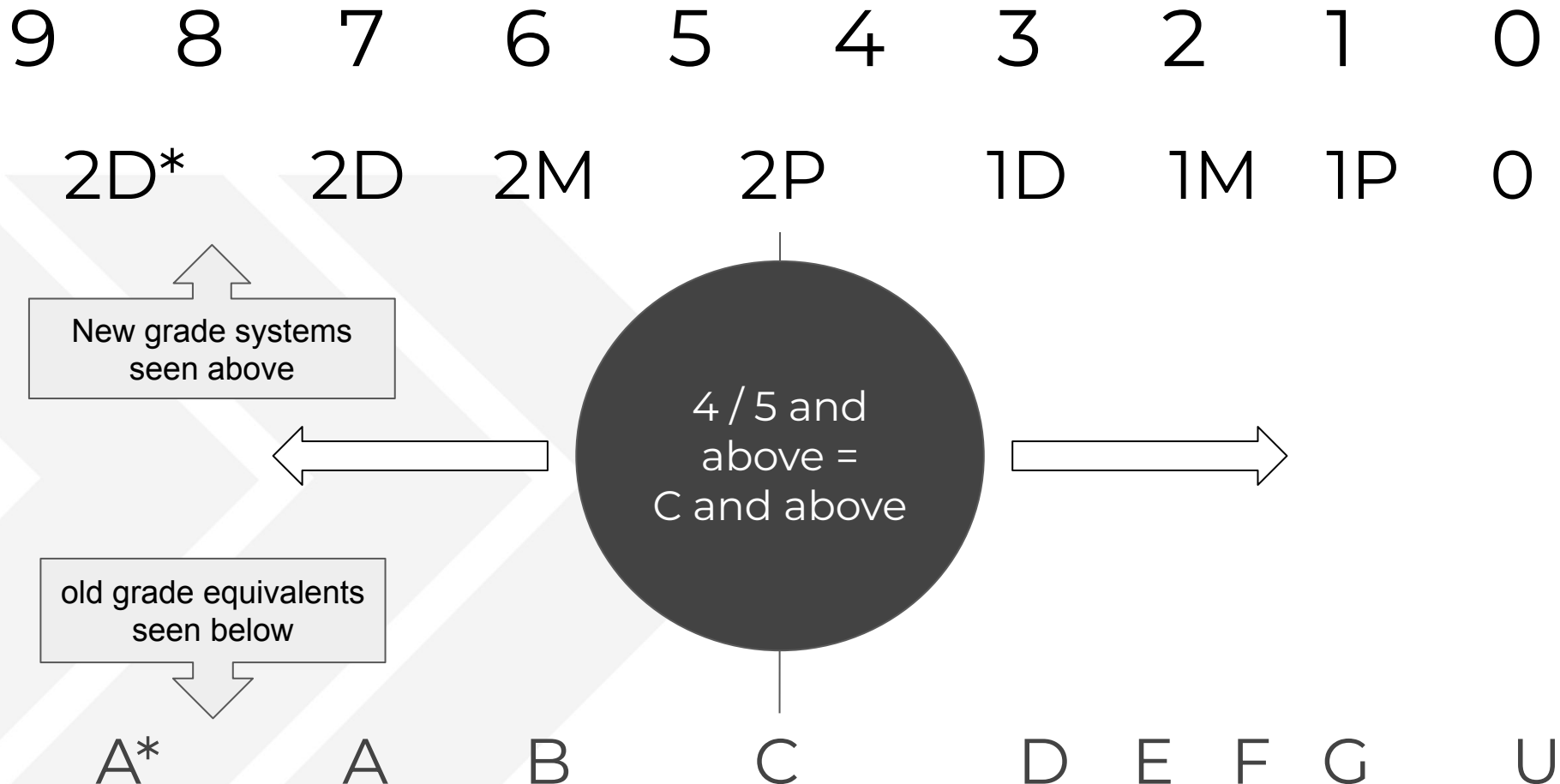


# GCSE GRADING

The grading system for GCSEs changed gradually between 2017 and 2019.

The previous A\*-G grading system was replaced by grades 9-1 (9 being the highest grade).

Vocational subjects such as iMedia, Health & Social Care and Travel & Tourism are graded using Pass, Merit, Distinction, Distinction\*. Level 2 is awarded for work equivalent to a grade C or above. Level 1 is awarded for work below grade C equivalent.



# KEY STAGE 4 SUBJECTS

## CORE SUBJECTS

- GCSE English Language
- GCSE English Literature
- GCSE Mathematics
- GCSE Science
- Core PE
- Personal Development

## OPTIONAL EBacc SUBJECTS

(These subjects contribute to the English Baccalaureate. All students must choose at least one from this list)

- GCSE Computer Science
- GCSE French
- GCSE Geography
- GCSE History
- GCSE Triple Science

## OTHER OPTIONAL SUBJECTS

- GCSE Art
- GCSE Business Studies
- GCSE Design
- GCSE Drama
- BTEC Health & Social Care
- Cambridge National: Creative iMedia
- GCSE Media, Television and Film Studies
- GCSE Music
- GCSE Philosophy and Ethics
- GCSE Photography
- GCSE Physical Education
- BTEC Travel & Tourism

Students must choose **FOUR** optional subjects from the lists, at least one of which has to be from the EBacc group

Please note that the school reserves the right to make changes to the options on offer each year. Options need to be blocked into groups owing to the practicalities of designing a timetable. This blocking may later restrict the combinations of subjects which students can take. We will, however, be using the initial choices made by students to create the blocks to minimise any potential issues.



# WHICH COMBINATION OF COURSES?

It is important that you think carefully about which combination of subjects will be right for you to achieve the best possible outcomes at the end of Year 11.

*Note: This advice is for guidance only and every student should consider the best combination of subjects for them. You should discuss your combination and possible option choices with your tutor, subject teachers and your parents.*

Combination	For students within this range of target grades	Options you should consider:
1	Grades 5-9	A full range of GCSE subjects to include French plus at least one of either History or Geography. If you wish, you can do all three of these subjects with one further subject.
2	Grades 4-6	A range of GCSE subjects to include at least one of the following: French, History or Geography. If you wish, you can do all three of these subjects with one further subject.
3	Grades 1-3	At least one subject from the EBacc list on the previous page. A staff member will also discuss with you the range of subjects you might study.

\*\* The ENGLISH BACCALAUREATE - (EBacc)

The English Baccalaureate is one of the performance measures determined by the Department for Education. It is not a qualification in its own right and students do not receive a separate certificate. However, it reflects the achievement of students over a range of five key academic subjects. It is seen by some people as a more academic route towards A Levels, and some universities prefer applicants to have studied a number of EBacc subjects which they call 'facilitating subjects' because they provide a good foundation for many different higher education courses.

You will be considered to have achieved the EBacc if you achieve grade 5 or above in:

English,  
Maths,  
at least two Sciences,  
French  
and *either* History *or* Geography.

Not studying the EBacc will still enable you to go on to study A Levels and apply for university. Our advice remains that if this combination of subjects is right for you, fits your interests and your strengths as a student, then you should study them. Otherwise, choose the best combination of courses for you within our option choices. The options available to you at Redmoor, and the way we guide you and check those choices, ensures that every student studies a good mix of subjects which includes a number of facilitating (traditional) subjects.

You can find out more about the English Baccalaureate here: <https://www.gov.uk/english-baccalaureate-information-for-schools>



# HOW DO I MAKE MY CHOICES?

This booklet is designed to make your transition from Year 9 to Year 10 as smooth as possible. It gives you and your parents or guardians, information about our options process and the large selection of courses available to you.

At Redmoor, the curriculum is organised around our students in that we build our option blocks after students have made their choices. This maximises the opportunities for students to study every subject they choose. However, this is not always possible and once the deadline for handing in option choices has passed, we will construct the blocks and it is at this point we may come back to you with any clashes that have occurred. To put this into context, we spoke to 12 students last year who had one clash with their 4 choices - this is an amazing achievement for any school. However, sometimes courses become full with just first choices. If this occurs we will work with students to find suitable alternatives. Because of this, selecting reserve subjects you would be happy with is really important!

This section of the booklet will help you reflect on how you can choose the best combination of subjects. The courses you choose need to be right for you.

For some students, we will discuss a more personalised timetable with you and your families to ensure we are meeting the needs of every individual.

All students will study English Language, English Literature, Maths, Science (Double or Triple), Core PE and Personal Development.

Read the information carefully and do not be afraid to ask for advice. It is important to discuss your course selection with the following people:

- Parents or Guardians
- Tutors and Head of Year
- Subject Teachers
- Mr Matthews (senior leader in charge of Options)
- Redmoor Futures (careers) Team: Mr Duggins & Ms Davey



# HOW DO I MAKE MY CHOICES?

What  
Subjects  
am I good  
at?

What  
subjects  
do I  
enjoy?

Which  
route is  
best for  
me?

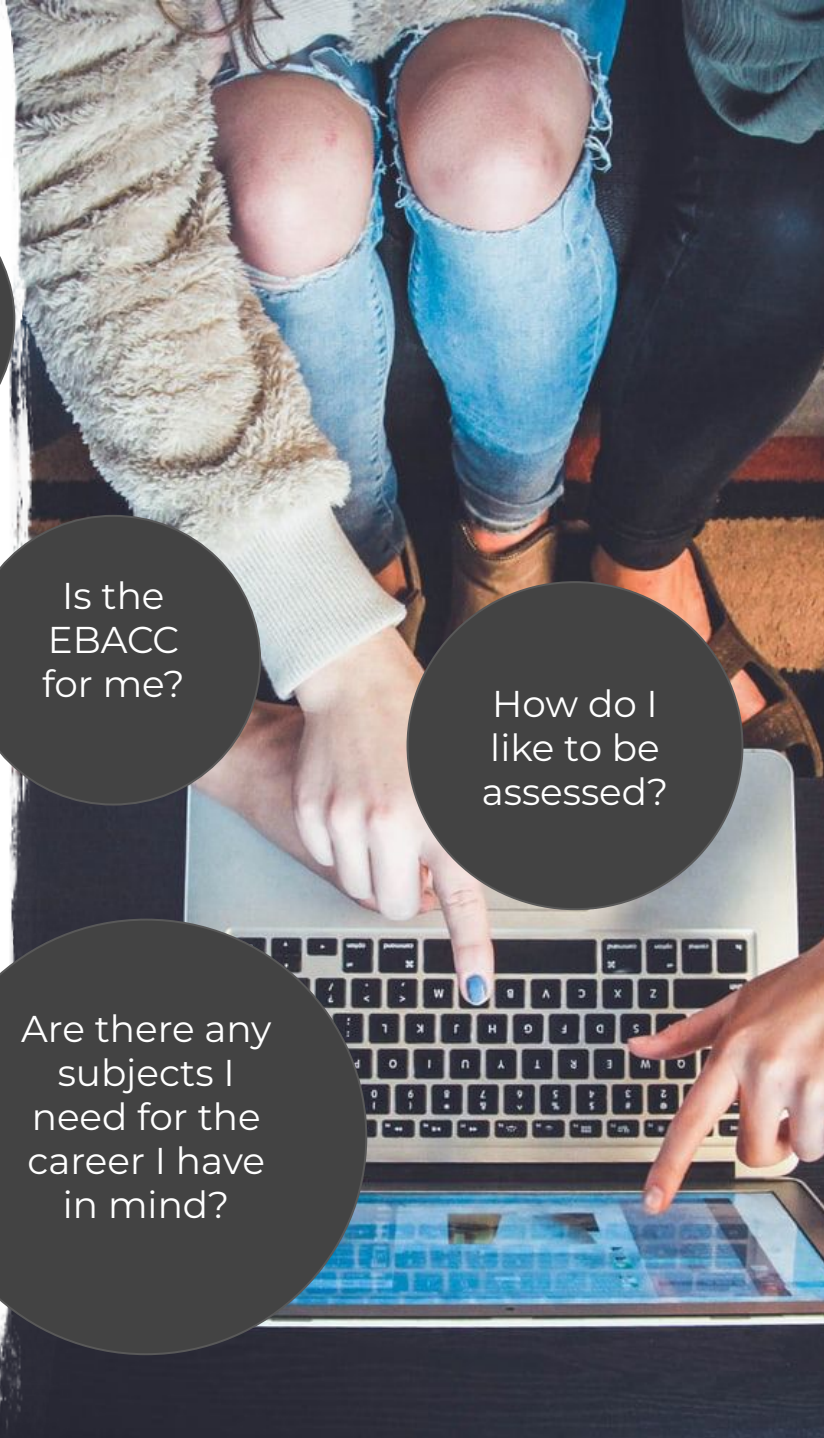
Is the  
EBACC  
for me?

How do I  
like to be  
assessed?

How do I  
learn  
best?

Are there any  
subjects I  
need for the  
career I have  
in mind?

How will I achieve  
maximum success?





# FREEDOM TO MAKE CHOICES

For the first time in your school career you have the freedom to choose some of your subjects. But the decisions you make now will influence the choices open to you later on when you are choosing the college or apprenticeship you go to after you leave Redmoor.

## **It's Your Future**

The qualifications you get at age 16 will also have an impact on:

- The kind of career you decide on
- The level at which you enter it
- The type of further or higher education course you may eventually study

A good general education is important whatever you are going to do. Universities, Colleges of Higher and Further Education, employers and training providers have one thing in common. They look for young people with an all-round education, wide interests, experience and qualifications - and a fantastic, positive attitude.

## **What are you interested in and what do you enjoy?**

You could be interested in other cultures and languages, writing projects, helping people, being outdoors or designing things. Choose courses that you will enjoy and give you the best chance of success!

## **What career do you want to do in the future?**

You should find out what courses would best fit with your plans. Your PHSCE lessons will help with this.

If you do not know which career you want to follow our advice is to keep your choices as broad and balanced as possible. So this may be options drawn from Technology, Languages, Humanities, Business or the Arts.

## **When is your learning most successful?**

Do you prefer more academic or practical learning? Which courses will best fit with the way you most like to learn? Do you achieve well in end of unit tests or exams? Or does the opportunity to complete a project suit you better?







# COMPULSORY SUBJECTS

## COMPULSORY SUBJECTS

The subjects which all pupils must take are:

- GCSE English Language
- GCSE English Literature
- GCSE Mathematics
- GCSE Science (Double or Triple)

## COMPULSORY NON-ASSESSED SUBJECTS

All students must take these subjects but they do not lead to formal qualifications:

- Personal Development
- Core Physical Education





# ENGLISH LANGUAGE

## What will you study in this course?

This GCSE focuses on developing your functional English skills. You will be expected to read, understand and analyse a range of fiction and non-fiction texts. The course also focuses on writing for a variety of purposes such as description, narrative or persuasion.

Through this study, you will be preparing to sit 2 GCSE examination papers. Each paper has a distinct identity. Paper 1, *Explorations in Creative Reading and Writing*, looks at how writers use narrative and descriptive techniques to engage the interest of readers - so expect to look closely at the craft of creative writing. Paper 2, *Writers' Viewpoints and Perspectives*, looks at how different writers present their viewpoints on similar topics.

As part of your GCSE studies you will also be required to complete a spoken language assessment (previously speaking and listening) where you will need to prepare and present a speech on a topic of your choice.

This course also focuses on writing for a variety of purposes, with students producing descriptive, narrative and persuasive texts.

## How will you be assessed?

You will take 2 exams in the summer term of Year 11. There are no longer separate papers for Higher or Foundation and there is no coursework so your grade will be decided based upon these exams. Each is worth 50% and lasts for 1 hour 45 minutes.

The Spoken Language aspect of the GCSE will be assessed and marked by your class teacher. It will focus on using Standard English, presenting and responding to questions and feedback.

## Where this option could take you post 16?

A good grade in English Language is essential for most post 16 qualifications. However, you might choose to pursue the subject at a higher level. You could go on to study English Language at AS or A-level, for example. Common careers reliant upon strong performance in English Language include journalism, advertising, public relations, writing, publishing and teaching.

**Exam Board:** AQA





# ENGLISH LITERATURE

## What will you study in this course?

This GCSE allows you to explore and respond to a wide variety of literature that will stay with you for life. The texts you will study include a Shakespeare play, a 19th century novel, a modern play and a collection of poems from the AQA poetry anthology. In addition to this, you will study a wide range of poetry to prepare you for the unseen poetry assessment.

## How will you be assessed?

You will sit two untiered, closed book examinations in the summer term of Year 11 and this will account for 100% of the GCSE English Literature grade.

Paper 1: 1 hour 45 minutes: Shakespeare and the 19th century novel - 40%

Paper 2: 2 hours 15 minutes: modern prose or drama, AQA poetry anthology and unseen poetry - 60%

## Where this option could take you post 16?

A good grade in English Literature is essential for most post 16 qualifications. However, you might choose to pursue the subject at a higher level. You could go on to study English Literature at AS or A-level, and then at degree level, for example. At A Level, it is seen as a 'facilitating subject' for Russell Group universities, meaning that it is one of the 8 most requested subjects for university course entry.

Common careers reliant upon strong performance in English Literature include publishing, teaching, law, journalism and marketing.

**Exam Board:** AQA



# MATHEMATICS

## What will you study in this course?

This GCSE consolidates and builds on the mathematics learnt at KS3. It develops key skills in problem solving, critical thinking and numerical awareness used in everyday life both at home and in careers or jobs.

The course covers the topic areas of: Number, Algebra, Ratio, Proportion and Rates of Change, Geometry and Measures, Probability and Statistics, developing in depth knowledge of these areas as well as exploring how they are interconnected and used in real life contexts.

## How will you be assessed?

You will take three exams in the summer term of Year 11. Each paper counts for 1/3 of the final Mathematics GCSE grade and lasts for 1 hour 30 minutes. Paper one is non-calculator, Paper 2 & 3 are calculator exams.

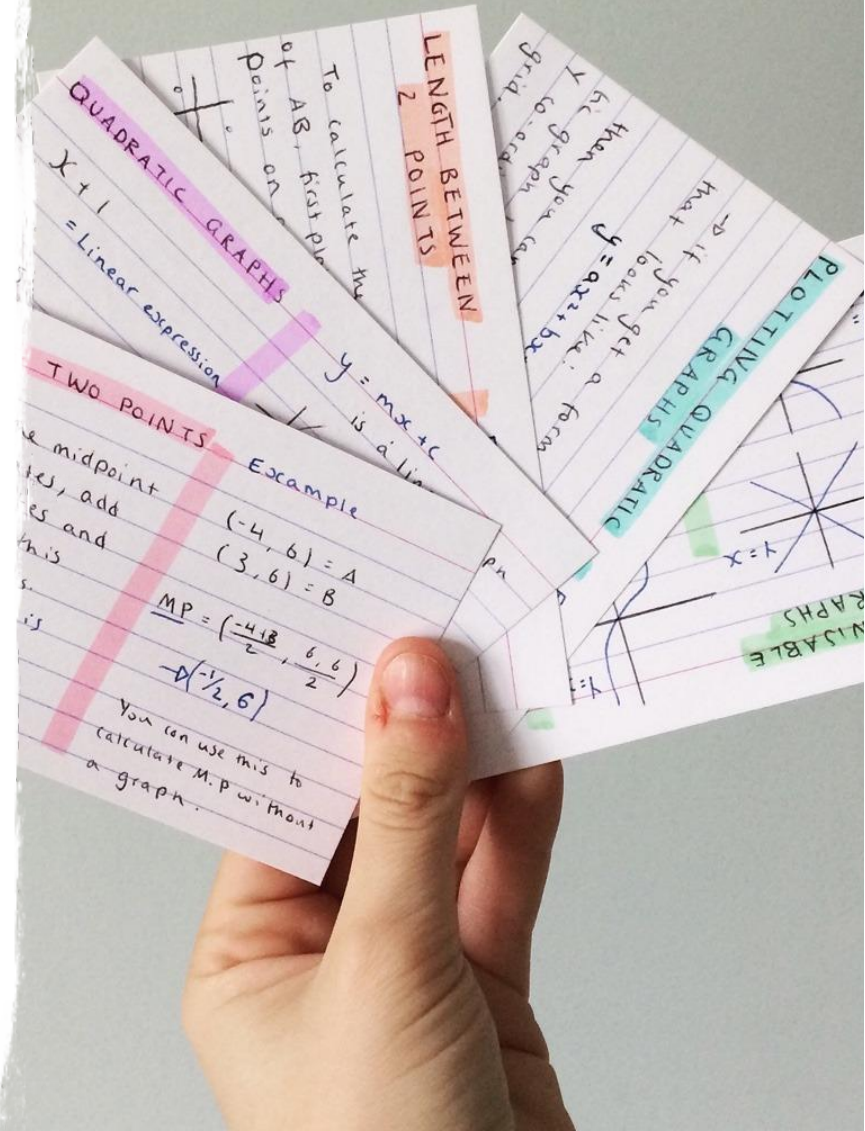
There are two tiers, the higher tier covers grades 9 - 4 and the foundation tier covers grades 5 - 1. The decision on tier entry will be made in Year 11.

## Where this option could take you post 16?

Many employers will ask for a good mathematics grade as this shows you can work through and solve problems. 'Students with good maths skills earn more on average than others who are not proficient in the subject.' [Ref: Witan Jardine, 2008]. It is also a key requirement for most A level and further education courses.

If you go on to study mathematics at a higher level, careers that you can go into are: law enforcement, accounting, medicine, engineering, programming, construction. This list just names a few - the list is endless!

**Exam Board:** AQA





# SCIENCE - COMBINED TRILOGY (DOUBLE AWARD)

## What will you study in this course?

GCSE Combined Science Trilogy is equivalent to 2 GCSEs. This course will help you to gain a deeper understanding of key scientific principles and concepts. You will use your mathematical skills in calculations, formulae and graph work; as well as your literacy skills to communicate your scientific ideas in Biology, Chemistry and Physics.

The course is assessed over 2 different tiers. Foundation tier pupils can achieve up to a level 5-5. Higher tier pupils can achieve up to a level 9-9 with the question paper being more challenging. The decision on tier entry will be made in Year 11 with the class teacher.

## How will you be assessed?

There are 6 papers in total which are 1 hour 15 minutes each in length. These papers assess all the content covered in the courses. All papers are at the end of Year 11.

The exam breakdown is as follows:

- Biology: Two written examinations: Paper 1 (16%) and Paper 2 (16%)
- Chemistry: Two written examinations: Paper 1 (16%) and Paper 2 (16%)
- Physics: Two written examinations: Paper 1 (16%) and Paper 2 (16%)

Marks awarded for all papers are combined to give a total score. This score is then used to determine an overall grade. There are two grades awarded which will show as 5-5, for example, if the standard achieved is grade 5 consistently, or 6-5, for example, if the student achieves between a grade 5 and 6 across the three subjects.

## Where this option could take you post 16?

Without Science, modern society would not be where it is today in terms of technology, exploration, and innovation. With good grades in Science you can progress to applied science courses and, if you get grade 6 or higher, to A Level courses in Biology, Chemistry or Physics.

You can also apply your knowledge and skills in a whole variety of other courses, careers, jobs and apprenticeships ranging from hairdressing to engineering, nursing and space exploration, to name but a few.

**Exam Board:** AQA



# PERSONAL DEVELOPMENT

## What will you study in this course?

The Personal Development course focuses on preparation for life and for living in a diverse community. It covers Personal, Social, Health and Citizenship Education (PSHCE), Careers and \*Morals and Ethics (ME). This course is integrated at Key Stage 4 and is lead by your Tutor.

The aim of the course is to:

- Promote the ideas of community cohesion, mutual respect and tolerance
- Develop your skills to become a competent and effective citizen within the community
- Promote the concept of lifelong learning
- Develop an understanding of how to maximise your own health, wellbeing and relationships
- Address aspects of personal career development
- Develop your competence as discerning consumers in preparation for independent living

## \*Morals and Ethics

You will continue your Morals and Ethics studies during KS4 and this will be delivered to you by your tutor during Personal Development time. During this time you will continue to explore different spiritual, moral and cultural themes, which promote the fundamental British values of democracy, the rule of law, individual liberty, and mutual respect and tolerance of those with different faiths and beliefs.

## Exam Board:

This course is compulsory but is not formally assessed.





# CORE PE

## What will you study in this course?

Learning to be fit and healthy is a crucial part of your education at Redmoor Academy, and therefore you will continue to have regular PE lessons during KS4.

Lessons aim to promote a healthy lifestyle but also to develop your confidence and self-esteem as well as your physical and social wellbeing. During lessons you will continue to develop your leadership, teamwork, communication and practical skills as well as your fitness through a variety of sports and activities.

## How will you be assessed?

In Years 10 and 11, you will follow a structured programme of activities and be given the option to choose courses that you find of the greatest interest.

These options will include:

- Football, Rugby, Netball, Basketball, Handball, Softball, Rounders, Tennis.
- Badminton, Dodgeball, Benchball, Fitness, Yoga, Pilates.

There will be a focus on leadership, independence, problem solving and resilience skills which can be transferred into other subject areas.

## Exam Board:

This course is compulsory but is not assessed. The focus of this is participation and enjoyment. You will also be recognised and rewarded for contributions to clubs and teams.

We offer the Sports Leadership Level 1 course as an option to take during this core PE lesson time and information will be sent to parents and students later in the year on how to sign up.





# EBACC SUBJECTS

All students should take at least one of these subjects and preferably two if they have target grades of 5-9

- GCSE Computer Science
- GCSE French
- GCSE History
- GCSE Geography
- GCSE Triple Science



# COMPUTER SCIENCE

## Are you suitable for this option?

Are you able to think logically and solve problems? Do you like developing your understanding of technology and how it fits into our lives and the world? Do you want to develop transferable skills in programming and software development that could be used in a wide range of careers?

GCSE Computer Science is an ideal introduction for those wanting to make a career for themselves in today's connected world. It is a great starting point for those contemplating becoming software developers, but also provides opportunity for discussion and investigation into how technology has become part of our everyday lives

## What will you study in this course?

The GCSE course builds on the knowledge you will have developed in KS3.

Through studying a range of topics you will:

- develop skills in code writing and programming
- study a range of topics surrounding software engineering
- develop mathematical and problem solving skills
- develop computer hardware knowledge
- develop algorithms and software to solve problems

## How will you be assessed?

The Computer Science course is assessed 100% by examination.

Computer systems - written examination, 50% of the final mark.

Computational thinking, algorithms and programming – written examination

50% of the final mark.

## Where this option could take you post 16?

With computers now embedded in modern life, almost all careers will require you to use them effectively. This is best done by being able to understand how computers work and how you can control what they do. Specifically this course has clear progression routes to A level Computer Science or various computer related BTEC courses at college.

**Exam Board:** OCR





# FRENCH

## Are you suitable for this option?

Are you a good communicator? Are you able to work independently? Do you want to broaden your horizons? Are you looking for an academic qualification that will make you stand out from the crowd? Are you interested in earning an average of 8% more than other employees with no languages skills?

## What will you study in this course?

This GCSE option follows a similar structure to that of French at KS3. Through the study of a wide range of topics, you will develop your knowledge and understanding of the language in a variety of new contexts and develop your language learning skills. You will deepen your knowledge of grammar and grammatical structures as well as develop your awareness and understanding of countries and communities where French is spoken.

## How will you be assessed?

French is a tiered exam, so you can be entered either at Foundation or Higher level.

**Listening** exam: 25% of final mark

Foundation tier is a 35 minute exam      Higher tier is a 45 minute exam

**Speaking** exam: 25% of final mark

Foundation tier is a 7-9 minute exam      Higher tier is a 10-12 minute exam

**Reading** exam: 25% of final mark

Foundation tier is a 45 minute exam      Higher tier is a 60 minute exam

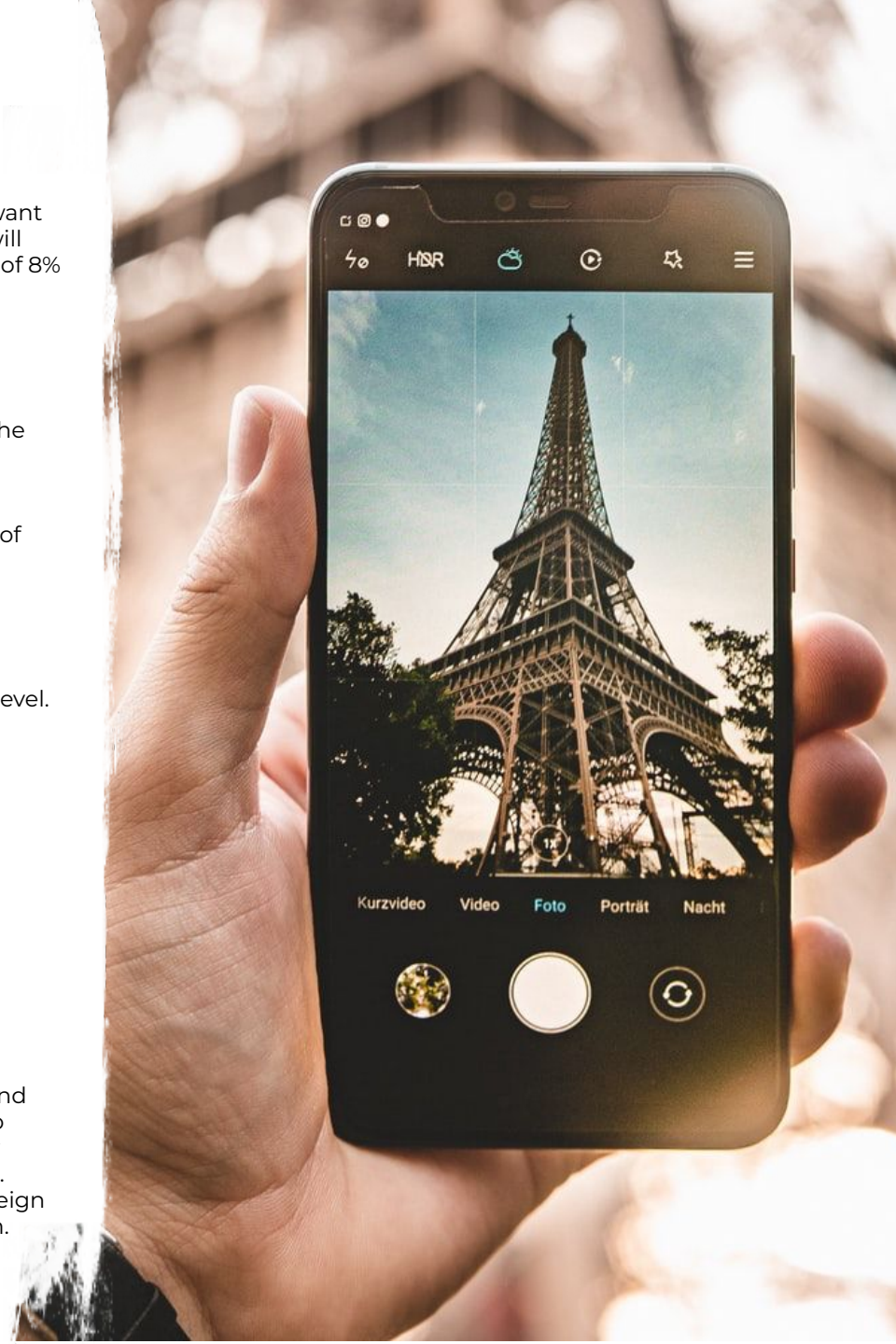
**Writing** exam: 25% of final mark

Foundation tier is a 70 minute exam      Higher tier is a 75 minute exam

## Where this option could take you post 16?

Studying GCSE French isn't just for those who want to take French at A Level and go on to study languages at university. However, neither is it only for those who want to work in the travel/tourism industry. In today's global community, many employers are looking for people who can communicate in a foreign language. Don't get left behind by your inability to communicate; gaining a GCSE in a foreign language will open many doors for you, whatever industry you go on to work in.

**Exam Board:** AQA



# HISTORY

## Are you suitable for this option?

Are you able to demonstrate that you can recall and apply a wide range of historical information, think logically, evaluate sources critically, and adapt your knowledge to build an argument supporting your findings? The study of History aims to stimulate and test the development of historical knowledge and understanding, the evaluation and interpretation of evidence and the ability to construct and communicate historical argument. History exams require some extended writing, however if you have met your expected level in your Year 9 History assessments then you should also be successful at GCSE.

## What will you study in this course?

Unit 1 – Thematic study and the historic environment:  
Crime and punishment in Britain c1000-present including Whitechapel c1870-1900: crime, policing, and the inner city.  
Unit 2 – Period study: The American West 1835-95 & British depth study: Early Elizabethan England 1558-88.  
Unit 3 – Modern depth study: Weimar and Nazi Germany 1918-39.

## How will you be assessed?

There are three units of work, all examined at the end of Year 11:  
Unit 1 30% of the final mark, is a written examination for 1 hour and 20 minutes.  
Unit 2 40% of the final mark, is a written examination for 1 hour and 50 minutes.  
Unit 3 30% of the final mark, is a written examination for 1 hour and 30 minutes.

## Where this option could take you post 16?

Employers and universities regard a History qualification very highly. It can aid a career in law, journalism or a job in the literary field. It can also lead to research jobs, a career in archaeology, travel and medicine. It can also be used in politics, social work, the police, the army or any jobs which require you to have an awareness of our culture or where you need to make evaluations based on detailed evidence.

**Exam Board:** Edexcel





# GEOGRAPHY

## Are you suitable for this option?

Are you keen to develop knowledge and understanding of local and global current events and gain an appreciation of the cultures and backgrounds of people from all over the world? Are you interested in investigating the Earth and its people and studying the features of the Earth - such as mountains, rivers and seas - and how they were formed? Do you want a deeper appreciation of the UK, its features and the people who live here?

## What will you study in this course?

The option consists of 3 units, and you will study a number of different topics within each unit:

**Unit 1: Physical Geography:** Natural Hazards (tectonics, weather and climate change), Physical UK Landscapes (rivers and coasts), The Living World (ecosystems, rainforests and cold environments)

**Unit 2: Human Geography:** Urban Issues and Challenges (mega cities, Rio, and Bristol), Changing Economic World, Resource Management (food, water and energy)

**Unit 3: Geographical application/Investigation:** Fieldwork - skills, method, results and evaluation techniques will be learnt for a written exam. You will develop: communication skills, graphical and cartographical skills, ICT skills debate and discussion skills, problem-solving as well as entrepreneurial skills.

## How will you be assessed?

Unit 1 35% of the final mark; one written exam for 1 hour and 30 minutes (88 marks)

Unit 2 35% of the final mark; one written exam for 1 hour and 30 minutes (88 marks)

Unit 3 30% of the final mark; one written exam for 1 hour and 30 minutes (76 marks)

## Where this option could take you post 16?

Geography could lead you to urban planning, marketing, transportation, real estate, or tourism, Geographic Information Systems, forestry planning, water management, weather forecasting, and land management. Geography is one of the most versatile subjects. Also, it is classified as a science subject in many universities when studied at A Level.

**Exam Board:** AQA





# TRIPLE (SEPARATE) SCIENCE

## Are you suitable for this option?

Do you enjoy science and intend on studying a science related subject after you leave Redmoor? Are you making good or excellent progress in science currently? Unlock a world of possibilities! Science empowers you with foundational knowledge, critical thinking skills, and practical problem-solving abilities. Fuel your curiosity, preparing for future studies and diverse careers in science, technology, engineering and beyond. Join us on a journey of discovery, where Triple Science opens doors to a future of innovation and understanding!

## What will you study in this course?

Triple Science students learn the same content as Combined Trilogy (Double Award) students with additional interesting and diverse components. Each of the three sciences, Biology, Chemistry and Physics, will be taught and assessed as separate subjects leading to the award of three GCSEs. The course has foundation and higher tier papers. Foundation tier pupils can achieve up to a level 5 and higher tier pupils can achieve up to a level 9. The tier selected needs to be the same for all three sciences.

## How will you be assessed?

There are 6 papers, each 1 hour 45 minutes long at the end of Year 11.  
Biology: Two written examinations each paper being worth 50%  
Chemistry: Two written examinations each paper being worth 50%  
Physics: Two written examinations each paper being worth 50%

## Where this option could take you post 16?

GCSE science unlocks a diverse array of compelling careers, ranging from research scientists making groundbreaking discoveries to healthcare professionals impacting lives directly. Engineers shape the future through innovative designs, data analysts glean insights for informed decisions and environmental scientists address global challenges. Through GCSE Triple Science, your career possibilities are vast—explore, discover, and thrive in professions fueled by scientific passion and impact!

**Exam Board:** AQA



# OPTION SUBJECTS

- GCSE Art
- GCSE Business Studies
- GCSE Design
- GCSE Drama
- BTEC Health & Social Care
- Cambridge National in Creative iMedia
- GCSE Media, Television and Film Studies
- GCSE Music
- GCSE Philosophy and Ethics
- GCSE Photography
- GCSE Physical Education
- BTEC Travel and Tourism

Remember to talk  
to the subject  
teacher if you are  
unsure about any  
of these courses





# ART

## Are you suitable for this option?

Are you highly creative, enthusiastic, imaginative, and interested in experimenting with a wide range of materials and techniques to create visually exciting artwork? Are you able to work independently and willing to visit art galleries and museums to make your work more informed? Are you able to evaluate and appreciate a range of disciplines, such as painting & sketching?

## What will you study in this course?

You will create a portfolio of work, starting with Fine Art skills. You will then submit projects of work exploring different Art disciplines. Each project can include sketchbook work, study sheets, experiments, models and conclusion pieces. You will produce one unit of work that shows development, from start to finish from a choice of starting points. You then have six weeks to produce preparatory work demonstrating the skills developed throughout the course. You will be given 10 hours to produce a final piece under examination conditions.

## How will you be assessed?

**Controlled Assessments (60% of final grade).** The assessments require you to demonstrate your skills in the four assessment objectives: develop your ideas, refine these ideas through experimentation, record your own sources and produce a final visual response;

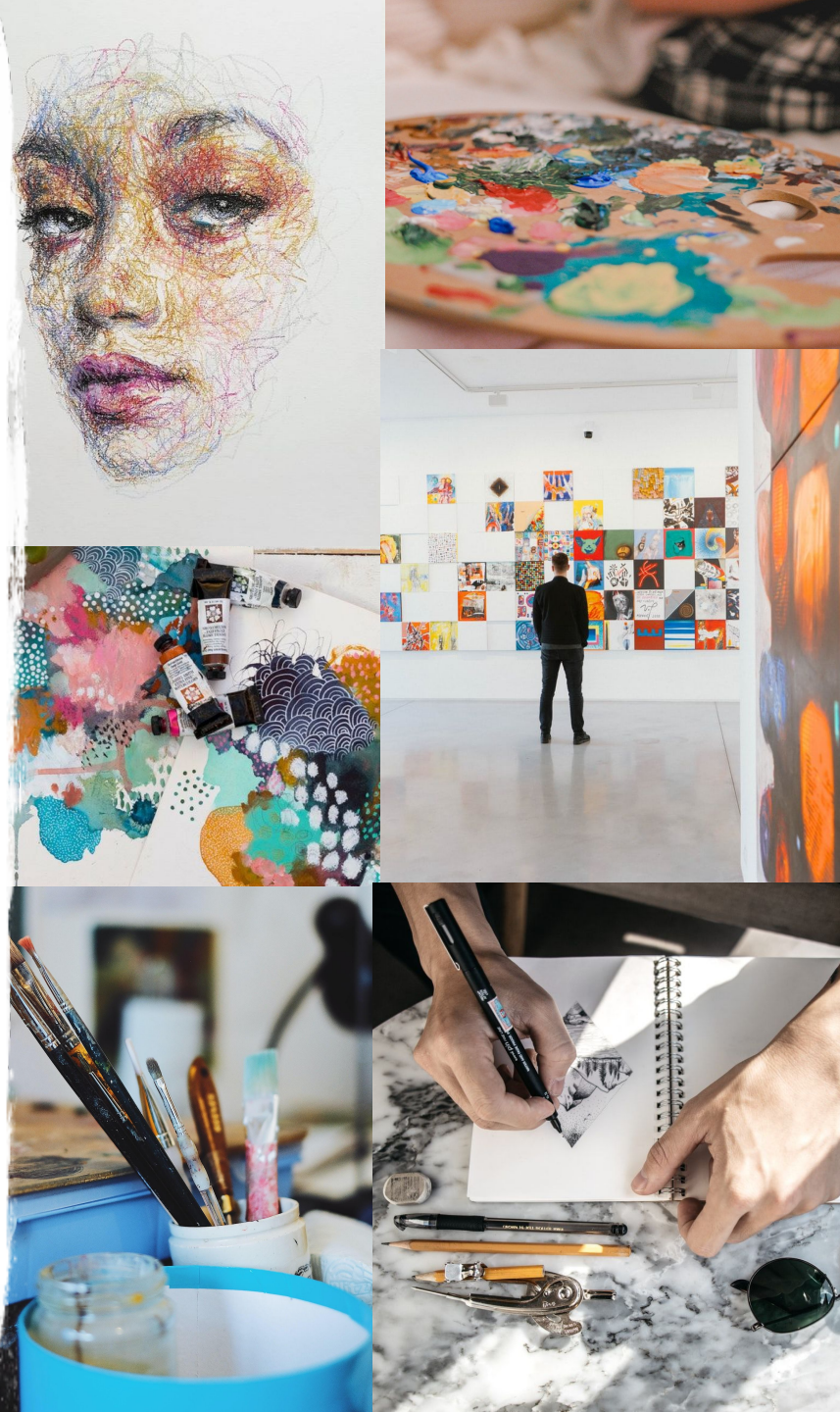
**10 hour practical exam in Year 11 (40% of final grade).** The exam revisits the four assessment objectives through assessment of detailed planning and justification of your understanding. **Note: Drawing is an essential part of this course.**

## Where this option could take you post 16?

GCSE Art will help you to develop your creative, technical, communication, analytical and problem solving skills - all of which are essential in a wide range of career opportunities, including: Architecture, Animation, Illustration, Fashion, Textiles, Ceramics, Silversmithing, Jewellery making, Visual Media, Graphics, Sculpture, Painting and Game Design to name a few!

## Exam Board: AQA

Please note: Only one Art and Design subject can be taken at GCSE





# GCSE BUSINESS

## Are you suitable for this option?

Are you interested in the world of business and how businesses operate in today's society? Are you interested in the news and in how the government and its policies affect business operations? Are you good at researching information and using data to investigate and solve problems? Are you well organised and keen to develop skills in critical analysis through a variety of written and discussion based tasks? Do you have the entrepreneurial flare of Richard Branson, Lord Sugar and Peter Jones? Then this is the course for you!

## What will you study in this course?

In year one you will concentrate on the key business concepts, issues and skills involved in starting and running a small business. You will explore core concepts through the lens of an entrepreneur setting up a business. The focus in year one is local and national business contexts and you will develop an understanding of how contexts impact business behaviour and decisions.

The second year of the course focuses on the issues and decisions used to grow a business, with an emphasis on aspects of marketing, operations, finance and human resources. Theme 2 also considers the impact of the wider world on the decisions a business makes as it grows.

## How will you be assessed?

Paper 1 – Theme 1 Investigating Small Business (50% of the final grade).

Paper 2 – Theme 2 Building a Business (50% of the final grade).

Both papers are 1 hour 45 minutes offering a mix of multiple choice, short and long answer questions.

## Where this option could take you post 16?

Business Studies is an exciting and dynamic subject to study at any level, because it's current and constantly changing. No two days in business are ever the same. You will gain skills that will be useful in a wide range of occupations such as Law, Accountancy, Business Management and any business you find yourself working in, as well as for further study to degree level.

**Exam Board:** Edexcel



Not  
previously  
studied at  
KS3

# DESIGN

## Are you suitable for this option?

Are you creative and eager to develop your design skills? Are you interested in a field of creative design like architecture, interior design or even fashion design? Are you able to communicate your ideas visually through detailed and refined sketchbook work? Are you interested in developing your projects through drawings, modelling and other practical techniques? Can you analyse and appreciate the work of other designers? Are you confident when interpreting your designs in to final responses? Can you work independently and meet deadlines?

## What will you study in this course?

You will learn to independently research and develop original design concepts. Whilst gaining the skills you need to produce imaginative designs, you will produce a portfolio of visual and written work that shows the development of your ideas, from start to finish. Each project will include sketchbook work, experiments, models and conclusion pieces. At the end of the course, you will produce one unit of work that shows development, from start to finish from a choice of starting points set by AQA linked to a theme of your choice. You then have up to six weeks to produce preparatory work demonstrating the skills you have developed throughout the course. You will then be given 10 hours to produce a final creative piece under examination conditions.

## How will you be assessed?

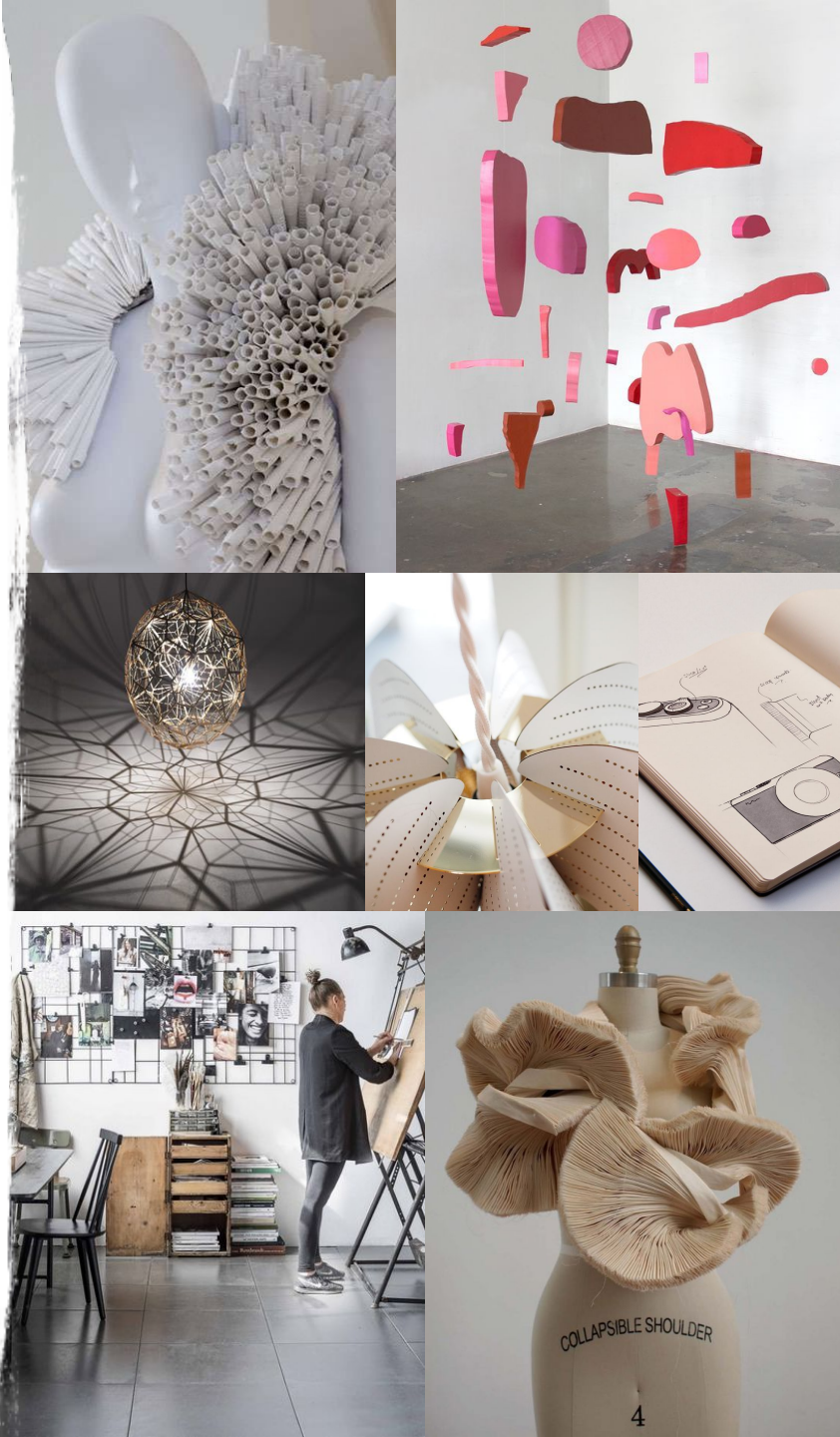
GCSE Design is made up of two elements: **Controlled Assessments (60% of final grade)**: the assessments require you to demonstrate your skills in the four assessment objectives which are split equally; research and the development of ideas, refining these ideas through experimentation, drawing skills and final 3D responses. A final **10 hour practical examination in Year 11 (40% of final grade)**: the examination revisits the four assessment objectives through assessment of detailed planning and justification of your understanding of a design theme. Please note: Drawing is an essential part of this course.

## Where this option could take you post 16?

With a GCSE in Design you could progress to study subjects such as Interior Design, Product Design, Textiles, Jewellery Design, Fashion Design, Architecture, Footwear Design and Graphics. You can also use the course as a stepping stone, equipping you with the skills to continue the subject with confidence at AS, A-level, College and beyond.

## Exam Board: AQA

Please note: Only one Art and Design subject can be taken at GCSE



# DRAMA

## Are you suitable for this option?

In Drama you will be able to develop many of the skills colleges, universities and employers are looking for, such as empathy, critical thinking, confidence, technology, leadership, connection, collaboration, team work, communication, global citizenship, creativity, and time management.

You will need to be able to perform, analyse and evaluate your own and others' work. This will include different styles and plays with different creative outcomes.

**Students will need to dedicate some extra time to rehearsals as well as learning lines and revising for written exams.**

## What will you study in this course?

You will develop the skills and techniques learnt at KS3 to a deeper level of understanding, exploring more stimuli and new plays and be able to link these to styles and practitioners with confidence. You will learn how to analyse and develop drama in written form as well as practical.

## How will you be assessed?

- *Component 01: Devising* - 40% of the qualification. You will develop a devised performance from a stimulus and a written analysis and evaluation of the process and performance (portfolio/coursework).
- *Component 02: Performance from a text* - 20% of the qualification.
- *Component 03: Theatre Makers in Practice* - 40% of the qualification.

Written Exam - in two sections.

- *Section A:* You will study a play called 'The Crucible' by Arthur Miller. In the exam there will be an extract with five varied questions of short and extended responses.
- *Section B:* You will see a live piece of theatre, which you will then write about in the exam. You will be able to take up to 500 words of notes into the exam with you for this section.

## Where this option could take you post-16?

Career options include public services, event management, administration, journalism, film and TV, creative design, business and management, legal sector, tourism and hospitality, education and many more using the skills that you will develop in drama. Careers within the arts sector are also options, such as directing, performing, producing, technical support, arts administration, media and PR. This option could lead you to further study at A Level and university with skills beneficial to a variety of higher education subjects.

**Exam Board:** Pearson Edexcel





# HEALTH AND SOCIAL CARE

BTEC Tech Award

## Are you suitable for this option?

Are you interested in the Health and Social Care sector and possibly want to go on to study at a higher level? Are you considering a career within the Health Care sector? Do you want to learn about how humans develop from birth to old age? Are you passionate about learning new vocational skills and knowledge that will compliment other GCSEs? Are you highly self-motivated, resilient, and able to meet deadlines with both classwork and homework?

## What will you study in this course?

This course provides an exciting introduction to the health and care sector. You will study three components throughout the two year course:

**Human Lifespan Development** Here you will learn about how we change and develop throughout our lives from babies into older adults. You will explore the lifestyle choices, factors and life events that affect us and how we manage change.

**Health & Social Care Services and Values** This component looks at which services are available and why people might need to use them. You will discover what might prevent someone from accessing these resources and the care values used by health and care professionals to ensure people get the care and protection they need.

**Health & Well-being** You will explore what being healthy means to different people and the factors that influence health and well-being, You will learn key health indicators and how to make health assessments. You will create a health and well-being improvement plan and consider the challenges of putting this plan into place.

## How will you be assessed?

Component 1 and Component 2 are each worth 30% of your total grade and are completed through internally assessed assignments: Component 1 in year 10 and Component 2 in year 11. Component 3 is worth 40% of your total grade and is assessed through a series of tasks set and assessed by the examination board at the end of the course.

## Where this option could take you post 16?

Studying BTEC Health and Social Care provides the foundation to study the subject at level 3 and higher at Sixth Form or College. It can lead to university opportunities and careers in a variety of roles including becoming a nurse, midwife, paramedic, pharmacist, social worker, physiotherapist, healthcare assistant, teacher, nursery worker and many more.

**Exam Board:** Pearson

Not  
previously  
studied at  
KS3

# CAMBRIDGE NATIONAL CREATIVE iMEDIA

## Are you suitable for this option?

Recent studies show that the Creative Industries are one of the fastest growing parts of the UK economy. Studying this qualification will help you develop the skills you need to thrive in a digital world, where simple ideas can be developed into apps, videos, images and websites and go viral within days, hours or even minutes. You will learn how people in the creative workplaces collaborate, communicate and work together to develop these powerful ideas and progress your skills in creating content within the mediums of the web, digital graphics and animation.

## What will you study in this course?

### **Unit R093: Creative iMedia in the media industry**

You will learn about how groups of people work together in the creative industries to plan and create the apps, websites, digital graphics and other products that billions of people interact with across the world everyday. Topics include:

- The media industry
- Factors influencing product design
- Pre-production planning
- Distribution considerations

### **Unit R094: Visual identity and digital graphics**

You will learn how digital graphics interact with almost every part of our everyday lives and get an opportunity to practise the skills needed to design and create bright and attractive visual identities and digital graphics for a range of different organisations

### **Unit R097: Interactive digital media**

Websites are such a huge part of everyday work and play. In this unit you'll learn what makes a website click and develop the skills in creating your own.

## How will you be assessed?

Unit R093: Exam worth 40% of the final grade.

Unit R094 and R097: Assessed through a practical task-based assessment with OCR-set tasks, worth 25% and 35% respectively.

## Where this option could take you post 16?

Post 16 routes range from apprenticeships in the creative digital media industry to video game and web design courses or A levels and vocational qualifications in ICT.

**Exam Board:** OCR





# GCSE MEDIA, TELEVISION & FILM STUDIES

## Are you suitable for this option?

Do you enjoy watching television and films, listening to music and the radio, have an interest in the news and enjoy creating videos and taking photos? Do you have good literacy skills and stamina for writing? Are you prepared to become a 'media sponge'; reading, watching, listening and researching widely - involving TV programmes, films, radio stations, websites and magazines/newspapers you wouldn't normally choose?

Media, Television & Film Studies is the exploration of the various communication forms that surround us. Whether we like it or not, we are surrounded by the media and this course will enable you to question and challenge how we are influenced and manipulated by it.

## What will you study in this course?

You will study how the media works; how to investigate who is behind the messages conveyed by the media and to understand, in order to enjoy or resist, the influence of advertising, broadcasting and mass communication through the internet. You will become more media-literate in order to evaluate the messages to which we are exposed. You will develop critical thinking and decision-making skills through the consideration of issues that are important, real and relevant in our modern society.

## How will you be assessed?

**Unit 1:** Written Exam 40%: **Exploring Media Language and Representation.** Newspapers, radio news/current affairs, advertising, video games, magazines and music videos.

**Unit 2:** Written Exam 30%: **Understanding Media Forms and Products.**

A TV genre over time and the music industry including artists' websites

**Unit 3:** (non-exam) 30%: **Creating Media Products.** Students will create their own authentic media product, such as a music video, a band's home webpage, magazine pages, film marketing products, opening sequence to a new TV drama etc. Note: student choices of practical work will be guided by teacher expertise and the school's resources.

## Where this option could take you post 16?

Students of Media often go on to careers in journalism, marketing, sales and advertising, broadcasting, product design and public relations. Media skills benefit students in the modern workplace, preparing them for many positions in our rapidly-changing world.

**Exam Board:** WJEC Eduqas



Not  
previously  
studied at  
KS3

# MUSIC

## Are you suitable for this option?

This GCSE allows students to develop music skills and understanding in performance, composition and listening and appraising. This option is right for you if you have an enthusiasm for music and a willingness to listen and appreciate it in all its contexts. The GCSE supports aspiring musicians or singers, who are committed to regular practice and have the desire to understand music theory and learn how to use musical terms correctly in order to analyse and appreciate different styles of music. This is the correct option for students who are prepared to practise their instrument in their own time for solo performance as well as working with others on ensemble pieces within lessons.

## What will you study in this course?

In this option you will learn to read musical scores and will analyse music from a variety of genres through the study of eight set works. These range from instrumental music to vocal pieces and from traditional compositions to modern music recordings.

You will develop your listening skills as a musician and write about the music that you hear.

You will develop composition skills using notation and sequencing software as well as by using your instrument to prepare composition ideas and write a free composition and an inspired composition from a brief.

## How will you be assessed?

Unit 1: Performance: Solo and Ensemble - Controlled Assessment (30% of final grade)

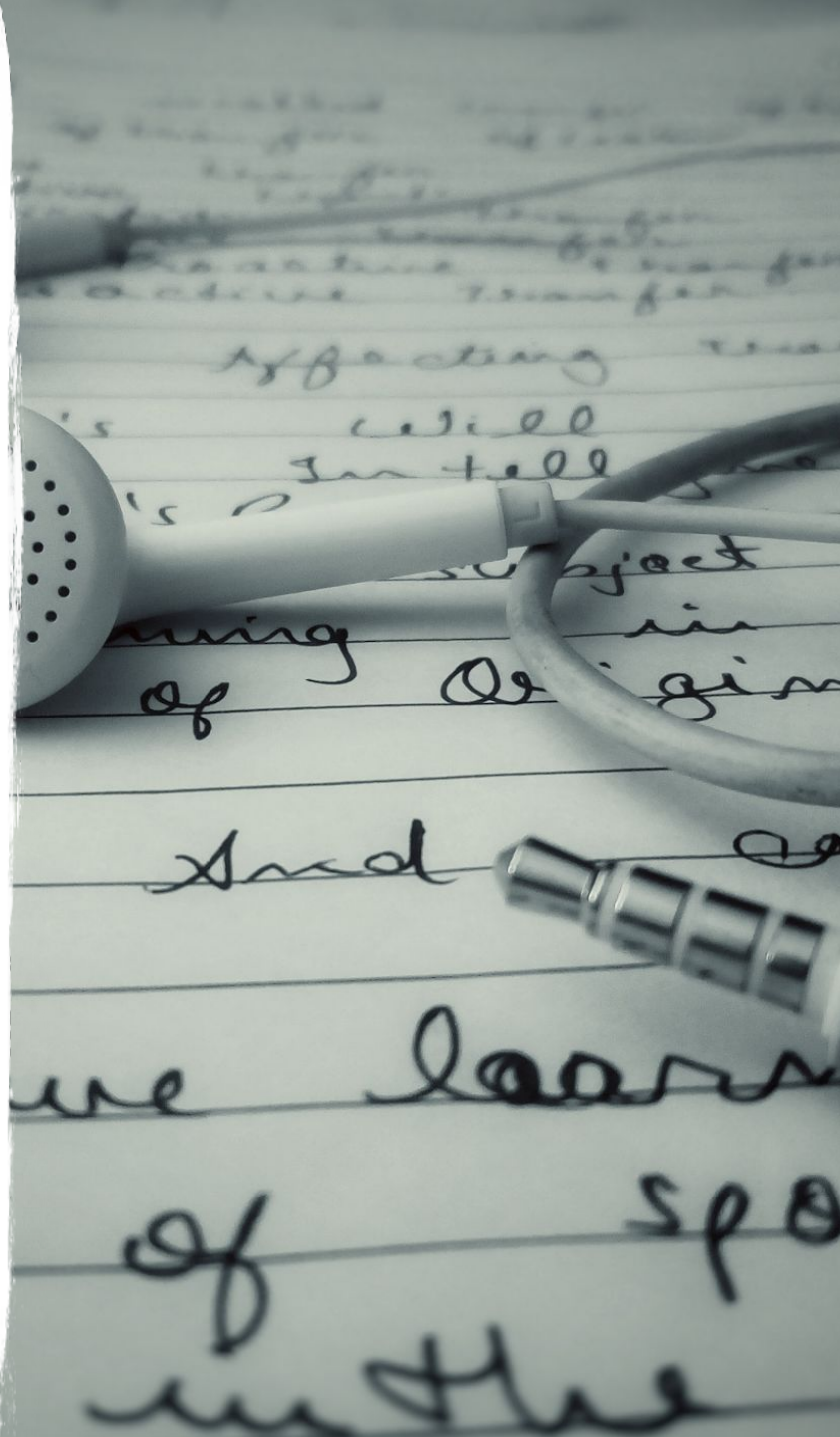
Unit 2: Composition: Free and to a brief - Controlled Assessment (30% of final grade)

Unit 3: Listening and Appraising - Written examination of 1 hour 45 minutes (40% of final grade).

## Where this option could take you post 16?

The course could lead you to study Music or Music Technology at A Level, as well as a range of vocational Level 3 qualifications in music and could then lead to a job or career in the music industry as a: Singer, Composer, Music Publicist, Producer, Recording Technician or Music Therapist to name but a few.

**Exam Board:** Edexcel





# PHILOSOPHY AND ETHICS

## Are you suitable for this option?

Are you someone who has their own opinions? Do you want to strengthen your skills and be able to express these, using evidence and examples to support your views? Are you interested in learning about what other people do and believe and investigate why?

## What will you study in this course?

The course is split into six areas. You will study the beliefs and practices of two religions - Christianity and Judaism These will cover Christian and Jewish beliefs and practices and four themes of study:

**Relationships and Families** - marriage, divorce, homosexual relationships and contraception.

**Religion and Life** - abortion, euthanasia and fertility treatment and genetic engineering.

**Peace and Conflict** - war, pacifism and extremism

**Human Rights** - social justice, prejudice and discrimination, exploitation of the poor.

**This GCSE explores current affairs**, dealing with real issues and at times discussing difficult and sensitive topics. You will learn how to discuss these issues and justify different points of view, with empathy. There will be a lot of discussion and the chance to put your point across about things that are going on in the world today.

## How will you be assessed?

There are two, 1 hour and 45 minute papers in this option:

Paper 1 - Beliefs and Practices for Christianity and Islam worth 50%

Paper 2 - Based on the ethical themes listed above worth 50%

## Where this option could take you post 16?

There is a rise in the number of students taking Philosophy and Ethics and employers really value the qualification. As one major high street computer games retailer recently told its recruitment teams: 'when employing staff look out for students of Philosophy and Ethics – they are usually very solid, reliable thinking people who are likely to have good logical skills and also be very people oriented'.

**Exam Board:** AQA



# PHOTOGRAPHY

## Are you suitable for this option?

Are you creative with your camera? Do you want to learn how to take the perfect picture? Do you wish to learn about the craft, media and technologies of today and of the past? Are you interested in developing your artistic skills and expanding your creativity, imagination and independence? GCSE Photography is a very specialist, technical and exciting subject which allows you to be creative using different digital media.

## What will you study in this course?

This course aims to enhance your photography skills. Learning how to use a DSLR camera, you will produce a number of different projects focusing on a variety of skills and techniques. During this option you will use an online slide presentation for research, development of ideas, experimenting with different themes and exploring different kinds of photography. To support this you will also study the work of other photographers and artists in order to inspire and improve your own photographic work. You will then produce final high-quality outcomes and a completed series of images, professionally presented as a final response.

## How will you be assessed?

The Photography GCSE is made up of two elements:

**Controlled Assessments (60% of final grade):** demonstrate your skills in the four assessment objectives: develop your ideas, refine these through experimentation, record your own sources of research and produce a final response.

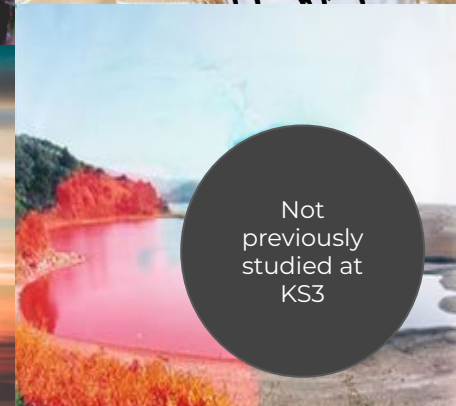
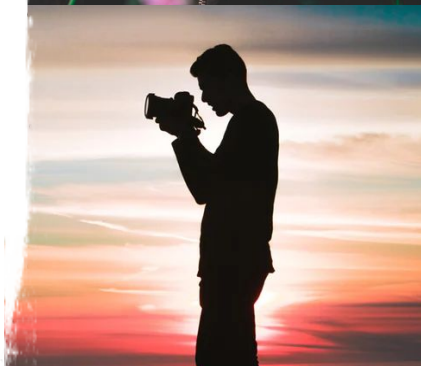
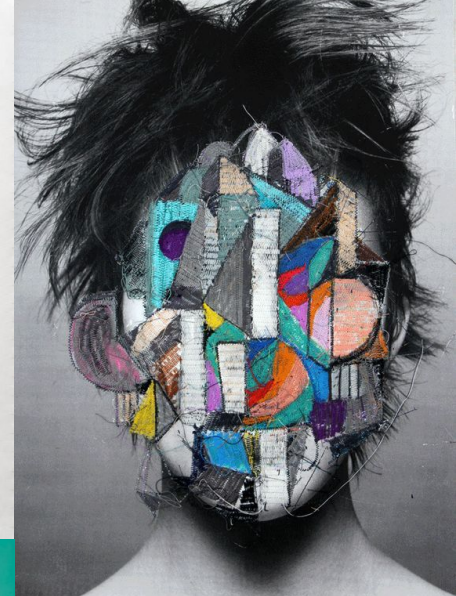
**A final 10 hour practical examination in Year 11 (40% of final grade):** The examination revisits the four assessment objectives through assessment of detailed planning and justification of your understanding.

## Where this option could take you post 16?

The course is good preparation for progression to A Level in Art and Design: Photography – Lens and Light-based Media or a relevant college/vocational course. It could lead to a career in Fine Art, New Media, Games Development or Games Technologies, as well as Digital Photography and Video.

**Exam Board:** AQA

Please note: Only one Art and Design subject can be taken at GCSE



Not  
previously  
studied at  
KS3



# PHYSICAL EDUCATION

## Are you suitable for this option?

Are you able to work well in a team as well as individually? Do you have a good level of ability in practical PE and in science as well? Are you able to relate your interests in physical activity to a theoretical context? Are you committed? Students that choose PE spend time out of school practising and refining skills in sport.

## What will you study in this course?

The Physical Education option has a great emphasis on science in an applied context, and therefore 60% of the mark is from 2 theory exams at the end of Year 11. Practical assessment is 30% to show what you can achieve in 3 different sporting areas from the exam board list (1 team sport, 1 individual and 1 of your choice) and 10% of the final mark is down to an assessed piece of coursework.

### **Component 1: Fitness and Body Systems** (1hr 30 min exam)

- Musculoskeletal and Cardiorespiratory Systems
- Movement Analysis
- Fitness Training

### **Component 2: Health and Performance** (1hr 15 min exam)

- Benefits of Exercise
- Diet
- Sport Psychology
- Influences to Participation in Sport

### **Component 3: Practical Performance**

- 1 team sport, 1 individual sport and 1 of your choice.

### **Component 4: Personal Exercise Programme**

- PEP 6 week training programme

## How will you be assessed?

Two written theory exams - component one worth 36% and component two worth 24%  
Practical examination - where you will be assessed in three different practical activities: one team, one individual and another from either list worth 30%  
Planning, carrying out and analysing a written personal exercise programme on a chosen activity from the specification list worth 10%.

## Where this option could take you post 16?

GCSE Physical Education functions as a pathway to further qualifications in sport and can open the door to the multi-billion pound health and fitness industry which could include: Health & Exercise Management, Sports Science, Physiotherapy, Lifeguard, Teaching, Coaching and Personal Training, Sports Performance, Public Health, Media & Marketing, Science, the Fitness Industry and many others.

**Exam Board:** Edexcel



# TRAVEL AND TOURISM

BTEC Tech Award

## Are you suitable for this option?

Are you interested in the Tourism sector and possibly want to go on to study at a higher level? Are you considering a career within the Tourism sector? Are you passionate about learning new vocational skills and knowledge that will compliment other GCSEs? Are you highly self-motivated, resilient, and able to meet regular deadlines with both classwork and homework?

## What will you study in this course?

This course provides an exciting introduction to Tourism. You will study three components throughout the two year course:

Component 1: Travel and Tourism Organisations and Destinations

Component 2: Customer Needs in Travel and Tourism.

Component 3 : Influences on Global Travel and Tourism.

## How will you be assessed?

Component 1 and component 2 are completed through internally assessed assignments. Component 3 is assessed through an examination which is externally marked by the exam board Pearson.

## Where this option could take you post 16?

The travel and tourism sector is the UK's third largest employer, accounting for 9.5 per cent of total employment. Tourism is one of the fastest growing sectors in the UK in employment terms, employing nearly 3 million people. Studying BTEC Tourism provides the foundation to study the subject at level 3 and higher at Sixth Form or College. It can lead to university opportunities and careers in a variety of roles including becoming travel agents, in event management, hospitality industry, air stewarding, working at theme parks and attractions and many more. Travel and tourism is one of the fastest growing areas of the economy nationally.

**Exam Board:** Pearson





# REDMOOR AT KEY STAGE 4 AND ALTERNATIVE CURRICULUM

GCSEs can be a daunting prospect for some students who may require a high level of support and a reduced number of GCSE courses to study. This is not an option students can choose but one that will be recommended to some students based on our knowledge of their progress and the best methods of learning for them. For these students there will be an alternative programme of study, to run alongside their core GCSE subjects. Our current alternative curriculum includes the following courses:

- Vocational qualifications
- Certificates and awards (pre-GCSE courses)
- Life Skills course (ASDAN)
- Study Support

Parents will be notified if it is felt that their child may benefit from a form of alternative curriculum and you will be given an opportunity to discuss this in detail with a member of staff. We believe that focusing on a smaller number of GCSE courses can help raise achievement for some students whilst also developing other important skills and experiences.



# REDMOOR OPTION CHOICE FORM 2025

Name:	Tutor Group:
-------	--------------

## Core

All students will study English (Language & Literature), Maths, Science, Core PE and Personal Development.

**English Baccalaureate Subjects:** Please select **ONE** subject from the list below:

Choice	EBacc Subjects
	GCSE Computer Science
	GCSE French
	GCSE Geography
	GCSE History
	GCSE Triple Science



**Additional Option Subjects:** Please select any **THREE** subjects from the list below and **rank them in order of preference, 1st, 2nd, and 3rd.**

Then select **two reserve choices** and **rank them in order of preference using R1, R2.**

Additional Option Subjects	
GCSE Art	Cambridge National Media
GCSE Photography	GCSE Media, TV and Film Studies
GCSE Business Studies	GCSE Music
<b>GCSE Computer Science</b>	GCSE Philosophy & Ethics
GCSE Drama	GCSE Design
<b>GCSE French</b>	GCSE Physical Education
<b>GCSE Geography</b>	BTEC Travel & Tourism
<b>GCSE History</b>	<b>GCSE Triple Science</b>
BTEC Health and Social Care	

To achieve the full **English Baccalaureate**, you must opt for **French** and a humanities subject (**History or Geography**).

If you have had a discussion with Ms Wilson or Mrs Buckingham about taking Study Support or ASDAN (and therefore a reduced number of GCSEs) please select the number of options you have been advised to choose. This can be different for each student following this pathway.

Signed : Student:	Signed : Parent:
Date:	Date:
Signed : Tutor:	
Date:	

Deadline for return: **Friday 14th February 2025 by 10am**