



KS4 OPTIONS BOOKLET

A guide to KS4 courses at Redmoor

MESSAGE FROM THE PRINCIPAL

I hope you are looking forward to the next, exciting stage in your education. As part of the Redmoor Futures Programme, this will be the opportunity for you to succeed in your GCSE examinations and give you freedom of choice at 16 to choose where you will be after Redmoor;

- A Levels
- Apprenticeships
- Vocational courses

Not only that, you will also have the opportunity to do many exciting courses, such as the Duke of Edinburgh scheme and Work Experience, only available to our older students. Staff will see that you are that bit older and more independent and treat you accordingly. We have already provided Year 10 and 11 with their own areas and are keen to continue working with you to develop these and other ideas further.

A move into Key Stage 4 will bring exciting new challenges and the opportunity to have a lot more choice in the subjects you learn. The KS4 curriculum at Redmoor, is a mixture of core subjects such as English, Maths, Science, PE and Personal Development along with a variety of optional subjects that will help you in the future.

All the subjects we offer are designed to provide you with useful skills and qualifications that you will use in later life. We are proud to see our students develop into self-assured young adults and now that we can take you on the next stage of your educational journey we are confident you will achieve even greater heights.

This booklet has been designed to help you make the most appropriate choices for you. You will find some information about each of the subjects taught at Redmoor. Consider carefully. Don't rush into choosing; you need to consider what is best for you. There will be a number of opportunities to find out more about the subjects and you should also discuss these important decisions with your parents and carers, your tutor and your subject teachers.

Your form tutor and Year Manager will be the first points of contact with any general queries but all staff are also happy to answer any questions you may have about your option choices, so don't be afraid to ask. They will meet with you again to check your final choices to ensure that they are suitable for your learning needs and ambitions.

I'm sure you will get as much out of KS4 as you put into it. I have limitless ambitions for each and every one of you. If we all commit over the next two years to getting you the best possible results, you can look forward with confidence to the further and higher education of your choice.

I wish you every success.



*M Nicolle
Principal*

REDMOOR FUTURES AND POST 16

Redmoor Futures is a comprehensive scheme that aims to raise your aspirations, broaden your horizons and empower you to make informed realistic decisions at all key transition points in your education and early career.

Redmoor Futures encompasses the following schemes:

- Careers education in PHSCE
- Development of transferable skills
- Work Experience for Year 10 students
- Careers advice (independent via LEBC)
- CV preparation and interview skills, including a mock interview
- Post-16 application support

POST 16

All students are required to be in education until the age of 18. When choosing subjects for Key Stage 4 it is a good idea to consider what options you are likely to choose for Post 16 education – whether that is at sixth form college, a specialist college or via an apprenticeship scheme.

The general requirements for post-16 colleges are given below (please note this varies depending on the relevant college and the information below is given as a guide only – for specific information, please contact the Colleges directly):

- 5 GCSE or equivalent passes at Grade 5 or above to progress to A level courses
- At least one grade 4 or above in English and/or Maths for other post-16 courses
- To study a subject at A level, students will usually require at least a 5 or equivalent in that subject at KS4
- A level Biology, Chemistry, Physics, Maths and French generally require a Grade 6 at GCSE
- Most apprenticeship schemes require a minimum grade 4 in English and Maths

All queries should be
addressed to
spither@redmooracademy.org

For more
information see
www.redmooracademy.org/futures



KEY STAGE 4 AND WHAT IT MEANS TO YOU

In addition to helping you to place your learning in the context of the real world, we believe the benefits of participating in enrichment activities in our extra-curricular programme are invaluable. We will, therefore not only continue to offer the same extra-curricular activities as in Years 7, 8 and 9 but also develop the enrichment and support programme to offer additional opportunities just for Years 10 and 11.

Pastoral support

We pride ourselves at Redmoor on the quality of support available to you all. Your year head will transition through to KS4 with you, as will your form tutor. This ongoing support, along with our comprehensive PSHE programme will help you navigate the GCSE years

P6 Extra-Curricular Activities

The wide range of extracurricular activities offered at Redmoor at both KS3 and KS4 means that there is something for everyone. Whatever your ability, you will be offered the chance to develop your talents, learn new skills and test your initiative.

The full schedule for P6 can be found on our website and will be confirmed later in the year. Here are just a few opportunities that may be on offer to you: Duke of Edinburgh, Work Experience, STEM for KS4, Performing Arts for KS4, sporting opportunities and competitions for KS4, an active learning programme for KS4, enrichment languages for KS4, personal development opportunities for KS4.

Duke of Edinburgh

We will be introducing a Duke of Edinburgh award in Year 10 & 11. This award will take place outside of school time. It is highly valued by employers, colleges and universities and can often help when applying for further education and higher education courses. To find out more please visit <http://www.dofe.org/>

Trips & Visits

You will continue to have the opportunity to take part in various trips and visits as part of your wide and varied curriculum.

Trips and visits will primarily be linked to enhancing the GCSE courses you are studying.



THINK HARD, WORK HARD, GO FAR

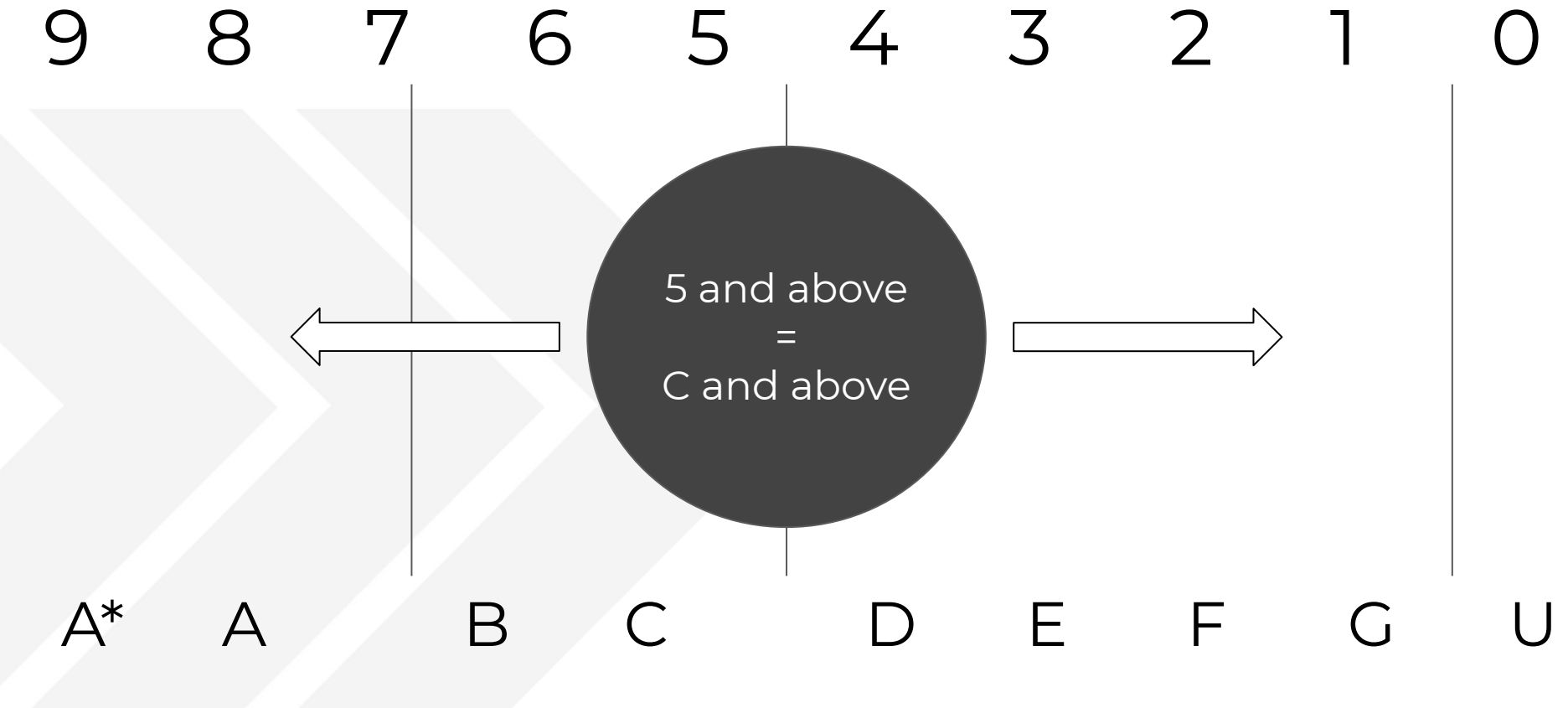
GCSE GRADING

The grading system for GCSEs has changed recently.

The previous A*-G grading system has been replaced by grades 9-1 (9 being the highest grade).

For the GCSE's starting in September 2019, all subjects will be graded using the new grading system, 9-1.

Some Vocational subjects may be graded using Pass (grade 4/5), Merit (grade 6), Distinction (grade 7), Distinction (grade 8/9) but none will continue to use A*-G.



KEY STAGE 4 SUBJECTS

CORE SUBJECTS

- GCSE English Language
- GCSE English Literature
- GCSE Mathematics
- GCSE Science
- Core PE
- Personal Development

OPTIONAL EBACC SUBJECTS

- GCSE Computer Science
- GCSE French
- GCSE Geography
- GCSE History
- GCSE Triple Science

OTHER OPTIONAL SUBJECTS

- GCSE Art
- GCSE Business
- Cambridge National Business Enterprise & Marketing
- GCSE Design
- GCSE Drama
- Btec Health & Social Care
- Cambridge National: Creative iMedia
- GCSE Media, Television and Film Studies
- GCSE Music
- GCSE Performing Arts
- GCSE Philosophy and Ethics
- GCSE Photography
- GCSE Physical Education
- Btec Travel & Tourism

Students must choose **FOUR** optional subjects from the lists, at least one of which has to be from the EBacc group

Options:

Please note that the school reserves the right to make changes to the options on offer each year. Options will need to be blocked into groups owing to the practicalities of designing a timetable. This blocking may later restrict the combinations of subjects which students can take. We will, however, be using the initial choices made by students to create the blocks to minimise any potential issues.



WHICH PATHWAY?

It is important that you think carefully about which combination of subjects will be right for you to achieve the best possible outcomes at the end of Year 11.

Note: This advice is for guidance only and every student should consider the best combination of subjects for them. You should discuss your Pathway and possible option choices with your subject teachers and your parents.

Pathway 1 – Student working above the standard expected for their age and if this approach is maintained s/he should be aiming for GCSE grades 9-5

Pathway 2 – Student working at the standard expected for their age and if this approach is maintained s/he should be aiming for GCSE grades 5-4

Pathway 3 – Student working towards the standard expected for their age and if this approach is maintained s/he should be aiming for GCSE grades 3-1

Pathway:	Options you should consider:
1	A full range of GCSE subjects to include at least two EBacc options. We recommend one of these is a language
2	A range of GCSE subjects to include one EBacc option and one BTEC option
3	A reduced number of GCSE/BTEC options & alternative provision as appropriate and advised

** The ENGLISH BACCALAUREATE - (EBacc)

The English Baccalaureate is an important performance measure determined by the Department for Education. It is not a qualification in its own right and students do not receive any additional qualifications or a certificate but it reflects the achievement of students over a range of five key academic subjects. It is increasingly seen as an important measure if students wish to follow a future academic route for some A Levels and some universities.

You will be considered to have achieved the EBacc if you achieve grade 5 or above in:
English, Maths, Sciences, French, History or Geography.

Not studying the EBacc will still enable you to study A Levels and apply for university.

Our advice remains that if this combination of subjects is right for you, fits your interests and your strengths as a student, then you should study them.

Otherwise, choose the best combination of courses for you within our option choices.

<https://www.gov.uk/english-baccalaureate-information-for-schools>

HOW DO I MAKE MY CHOICES?

This booklet is designed to make your transition from Year 9 to Year 10 as smooth as possible. It gives you and your parents or guardians, information about our options process and the large selection of courses available to you.

At Redmoor, the curriculum is organised around our students in that we build our option blocks after students have made their choices. This maximises the opportunities for students to study every subject they choose. However, this is not always possible and once the deadline for handing in option choices has passed, we will construct the blocks and it is at this point we may come back to you with any clashes that have occurred. To put this into context, we spoke to 7 students last year who had one clash with their 4 choices - this is an amazing achievement for any school.

This section of booklet will help you reflect on how you can choose the best combination of subjects. The courses you choose need to be right for you.

For some students, we will discuss a more personalised timetable with you and your families to ensure we are meeting the needs of every individual.

All students will study English Language, English Literature, Maths, Science (Double or Triple), Core PE and Personal Development.

Read the information carefully and do not be afraid to ask for advice. It is important to discuss your course selection with the following people:

- Parents or Guardians
- Tutors
- Subject Teachers
- Redmoor Futures Team



HOW DO I MAKE MY CHOICES?

What Subjects am I good at?

What subjects do I enjoy?

Which route is best for me?

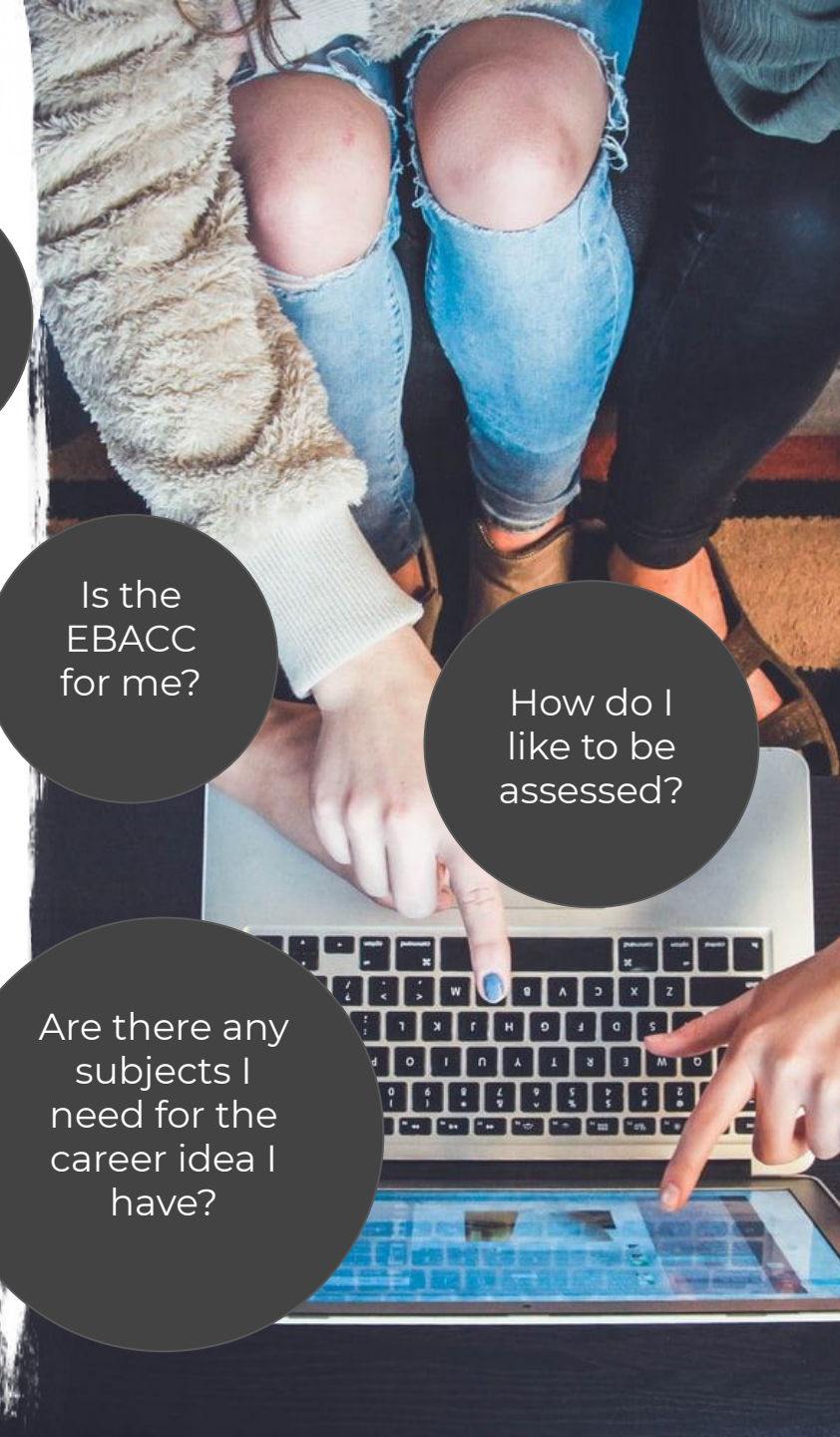
Is the EBACC for me?

How do I like to be assessed?

How do I learn best?

Are there any subjects I need for the career idea I have?

How will I achieve maximum success?



FREEDOM TO MAKE CHOICES

For the first time in your school career you have the freedom to choose some of your subjects. But the choices you make now will have a major impact on how much choice you have at 16.

It's Your Future

The qualifications you get at age 16 will also have an impact on:

- The kind of career you decide on
- The level at which you enter it
- The type of further or higher education course you may eventually study

A good general education is important whatever you are going to do. Universities, Colleges of Higher Education and Further Education, employers and training providers have one thing in common - they look for young people with an all-round education, wide interests, experience and qualifications. And a fantastic, positive attitude.

What are you interested in and what do you enjoy?

For example it could be other cultures and languages, writing projects, helping people, being outdoors or designing things. Choose courses that you will enjoy and so give you the best chance of success!

What career do you want to do in the future?

You should find out what courses would best fit with your plans. Your PHSCE lessons will help with this.

If you do not know which career you want to follow our advice is to keep your choices as broad and balanced as possible. So this may be options drawn from Technology, Languages, Humanities, Business or the Arts.

When is your learning most successful?

Do you prefer more academic or practical learning? Which courses will best fit with your preferred learning style? Do you achieve well in end of unit tests or exams? Or does the opportunity to complete a project suit you better?



KEY DATES AND DEADLINES

Friday 15th January to February 12th

A series of information, advice and guidance (IAG) sessions delivered by tutors discussing the choices to be made. This will include;

- Opportunities to access online careers information
- Information from current Year 10 students on their experiences so far
- Opportunities to start prioritising different subjects
- Discussions on what to ask yourself when making choices
- One-to-One discussions with tutors
- Information from subjects during lessons

Friday 15th January

A launch assembly by Mr Nicolle (Principal) to introduce the option process to students, followed by tutor time where students will be given a copy of the Options Booklet 2020. This will also be available through our website.

Information videos from students and teachers on each of our courses will be available on our website from this date along with a video presentation on the options process.

Thursday 28th January

'The Redmoor Futures' - online GCSE Information & Parent's Evening. (Times to be confirmed via ParentMail).

An opportunity for parents and students to talk to teachers of the courses they are considering taking at GCSE as well as receive progress updates from core subjects.

Friday 26th February

Options deadline - All completed option forms to be returned to school by 10am on this date.



COMPULSORY SUBJECTS

COMPULSORY SUBJECTS

The subjects which all pupils must take are:

- GCSE English Language
- GCSE English Literature
- GCSE Mathematics
- GCSE Science (Double or Triple)

COMPULSORY NON ASSESSED SUBJECTS

All students must take these subjects but they do not lead to formal qualifications.

- Personal Development including ME
- Core Physical Education



ENGLISH LANGUAGE

What will you study in this course:

This GCSE focuses on developing your functional English skills. You will be expected to read, understand and analyse a range of fiction and non-fiction texts. The course also focuses on writing for a variety of purposes such as description, narrative or persuasion.

Through this study, you will be preparing to sit 2 GCSE examination papers. Each paper has a distinct identity. Paper 1, *Explorations in Creative Reading and Writing*, looks at how writers use narrative and descriptive techniques to engage the interest of readers - so expect to look closely at the craft of creative writing. Paper 2, *Writers' Viewpoints and Perspectives*, looks at how different writers present their viewpoints on similar topics.

As part of your GCSE studies you will also be required to complete a spoken language assessment (previously speaking and listening) where you will need to prepare and present a speech on a topic of your choice.

This course also focuses on writing for a variety of purposes, with students producing descriptive, narrative and persuasive texts.

How will you be assessed:

You will take 2 exams in the summer term of Year 11. There are no longer separate papers for Higher or Foundation and there is no coursework so your grade will be decided based upon these exams. Each is worth 50% and lasts for 1 hour 45 minutes.

The Spoken Language aspect of the GCSE will be assessed and marked by your class teacher. It will focus on using Standard English, presenting and responding to questions and feedback.

Where this option could take you post 16:

A good grade in English Language is essential for most post 16 qualifications. However, you might choose to pursue the subject at a higher level. You could go on to study English Language at AS or A-level, for example. Common careers reliant upon strong performance in English Language include journalism, advertising, public relations, writing, publishing and teaching.

Exam Board: AQA



ENGLISH LITERATURE

What will you study in this course:

This GCSE allows you to explore and respond to a wide variety of literature that will stay with you for life. The texts you will study include: a Shakespeare play, a 19th century novel, a modern play and a collection of poems from the AQA poetry anthology. In addition to this you will study a wide range of poetry to prepare you for the unseen poetry assessment.

How will you be assessed:

You will sit two untiered, closed book examinations in the summer term of Year 11 and this will account for 100% of the GCSE English Literature grade.

Paper 1: 1 hour 45 minutes: Shakespeare and the 19th century novel - 40%

Paper 2: 2 hours 15 minutes: modern prose or drama, AQA poetry anthology and unseen poetry - 60%

Where this option could take you post 16:

A good grade in English Literature is essential for most post 16 qualifications. However, you might choose to pursue the subject at a higher level. You could go on to study English Literature at AS or A-level, and then at degree level, for example. At A Level, it is seen as a 'facilitating subject' for Russell Group universities, meaning that it is one of the 8 most requested subjects for university course entry.

Common careers reliant upon strong performance in English Literature include publishing, teaching, law, journalism and marketing.

Exam Board: AQA



MATHEMATICS

What will you study in this course:

The course focuses on consolidating basic skills and applying mathematical knowledge and understanding to solve problems as the National Curriculum aims to encourage Fluency, Reasoning and Problem Solving. It develops your skills in thinking and communicating mathematically, precisely, logically and creatively. Mathematical concepts are applied to situations that arise in real life.

The course focuses on the topic areas of: Number, Algebra, Ratio, Proportion and Rates of Change, Geometry and Measures, Probability and Statistics.

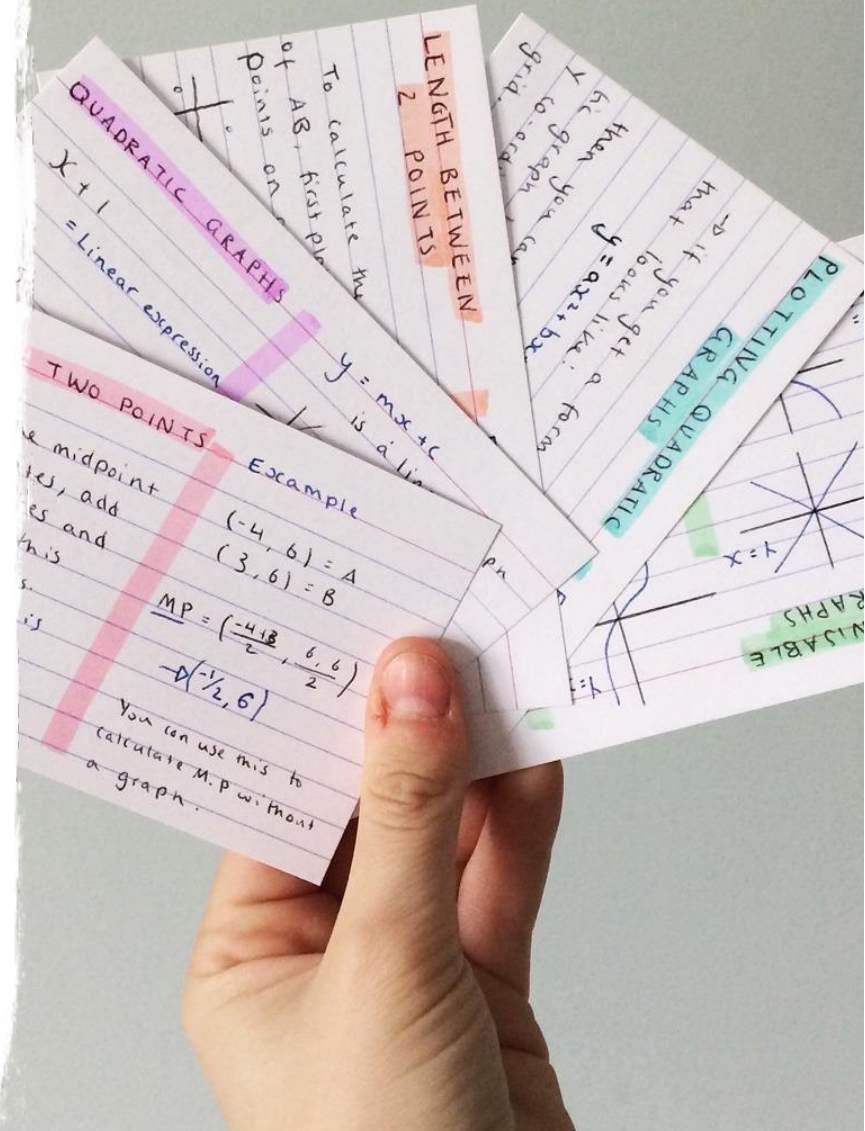
How will you be assessed:

You will take 3 exams in the summer term of Year 11. Each paper counts for 33.3% of the Mathematics GCSE. You will be entered in either the Foundation or Higher tier. Each of the 3 papers will last for 1 hour 30 minutes. Paper one is non-calculator, Paper 2 & 3 are calculator exams. The exam will be marked using the new 1-9 GCSE scale with 9 being the highest.

Where this option could take you post 16:

Maths is a key requirement for most A level and further education courses. Maths is fundamental knowledge for life and is used throughout the entire world. Students with good maths skills earn more on average than others who are not proficient in the subject. [Ref: Witan Jardine, 2008]. It will allow you a wider choice of exciting careers/job. From astronaut to landscape gardener, doctor to retail assistant; Maths is the answer!

Exam Board: AQA



SCIENCE - DOUBLE AWARD

What will you study in this course:

GCSE Combined Science Trilogy is equivalent to 2 GCSEs. This course will help you to gain a deeper understanding of key scientific principles and concepts. You will use your mathematical skills in calculations, formulae and graph work; as well as your literacy skills to communicate your scientific ideas in Biology, Physics and Chemistry.

How will you be assessed:

All assessments are linear and you will sit final exams at the end of Year 11.

There will be six examination papers in total:
Two in Biology, two in Chemistry and two in Physics.
The exams will make up 100% of the final grade.

You will complete set practicals during Year 10 and 11.
The practicals will be assessed during your six examination papers at the end of Year 11.

Where this option could take you post 16:

Without science, modern society would not be where it is today in terms of technology, exploration, and innovation. With a good grade in Science you can progress to A levels science subjects and applied science courses. You can also apply your knowledge and skills in a whole variety of other courses, careers and jobs and apprenticeships ranging from being a hairdresser, engineering, nursing and space exploration, to name but a few.

Exam Board: AQA



PERSONAL DEVELOPMENT

What will you study in this course:

The Personal Development course focuses on preparation for life and for living in a diverse community. It covers Citizenship, Personal, Social and Health Education (CPSHE), Careers and *Morals and Ethics (ME). This course is integrated at Key Stage 4 and is lead by your Tutor.

The aim of the course is to:

- Promote the ideas of community cohesion, mutual respect and tolerance
- Develop your skills to become competent and effective citizen within the community
- Promote the concept of lifelong learning
- Develop an understanding of how to maximise your own health, wellbeing and relationships
- Address aspects of personal career development
- Develop your competence as discerning consumers in preparation for independent living

*Morals and Ethics

You will continue your Morals and Ethics studies during KS4 and this will be delivered to you by your tutor during Personal Development time. During this time you will continue to explore different spiritual, moral and cultural themes, which explore and promote the fundamental British values of democracy, the rule of law, individual liberty, and mutual respect and tolerance of those with different faiths and beliefs.

Exam Board:

This course is compulsory but is not formally assessed.



CORE PE

What will you study in this course:

Learning to be fit and healthy is a crucial part of your education at Redmoor Academy, and therefore you will continue to have regular PE lessons during KS4.

Lessons aim to promote a healthy lifestyle but also to develop your confidence and self-esteem as well as your physical and social wellbeing. During lessons you will continue to develop your leadership, teamwork, communication and practical skills as well as your fitness through a variety of sports and activities.

How will you be assessed:

In Years 10 and 11, you will follow a structured programme of activities and be given the option to choose courses that you find of the greatest interest.

These options will include:

- Football, Rugby, Netball, Basketball, Handball, Softball, Rounders, Tennis.
- Badminton, Dodgeball, Benchball, Fitness, Yoga, Pilates.

There will be a focus on leadership, independence, problem solving and resilience skills which can be transferred into other subject areas.

Exam Board:

This course is compulsory but is not assessed. The focus of this is participation and enjoyment. You will also be recognised, as well as rewarded for contributions to clubs and teams.

We offer the Sports Leadership Level 1 course as an option to take during this core PE lesson time and information will be sent to parents and students later in the year on how to sign up.



EBACC SUBJECTS

All students should take at least one of these subjects and preferably two if they are on Pathway 1

- GCSE Computer Science
- GCSE French
- GCSE History
- GCSE Geography
- GCSE Triple Science



COMPUTER SCIENCE

Are you suitable for this option?

Are you able to think logically and solve problems? Do you like developing your understanding of technology and how it fits into our lives and the world? Do you want to develop transferable skills in programming and software development that could be used in a wide range of careers?

GCSE Computer Science is an ideal introduction for those wanting to make a career for themselves in today's connected world. It is a great starting point for those contemplating becoming software developers, but also provides opportunity for discussion and investigation into how technology has become part of our everyday lives

What will you study in this course:

The GCSE course builds on the knowledge you will have developed in KS3.

Through studying a range of topics you will:

Develop skills in code writing and programming, studying a range of topics surrounding software engineering, develop mathematical and problem solving skills, develop computer hardware knowledge, develop algorithms and software to solve problems.

How will you be assessed:

The Computer Science course is assessed 100% by examination

Computer systems - written examination 50% of the final mark

Computational thinking, algorithms and programming – written examination 50% of the final mark

Where this option could take you post 16:

With computers now embedded in modern life, almost all careers will require you to use them effectively. This is best done by being able to understand how computers work and how you can control what they do. Specifically this course has clear progression routes to A level Computer Science or various computer related BTEC courses at college.

Exam Board: OCR



FRENCH

Are you suitable for this option?

Are you a good communicator? Are you able to work independently? Do you want to broaden your horizons? Are you looking for an academic qualification that will make you stand out from the crowd? Are you interested in earning an average of 8% more than other employees with no language skills?

What will you study in this course:

This GCSE option follows a similar structure to that of French at KS3. Through the study of a wide range of topics, you will: develop your understanding of the language in a variety of new contexts, develop your knowledge of the language and develop your language learning skills, deepen your knowledge of grammar and grammatical structures, develop your awareness and understanding of countries and communities where French is spoken.

How will you be assessed:

French is a tiered exam, so you can be entered either at Foundation or Higher level.

Listening exam: 25% of final mark

Foundation tier is a 35 minute exam

Higher tier is a 45 minute exam

Speaking exam: 25% of final mark

Foundation tier is a 7-9 minute exam

Higher tier is a 10-12 minute exam

Reading exam: 25% of final mark

Foundation tier is a 45 minute exam

Higher tier is a 60 minute exam

Writing exam: 25% of final mark

Foundation tier is a 60 minute exam

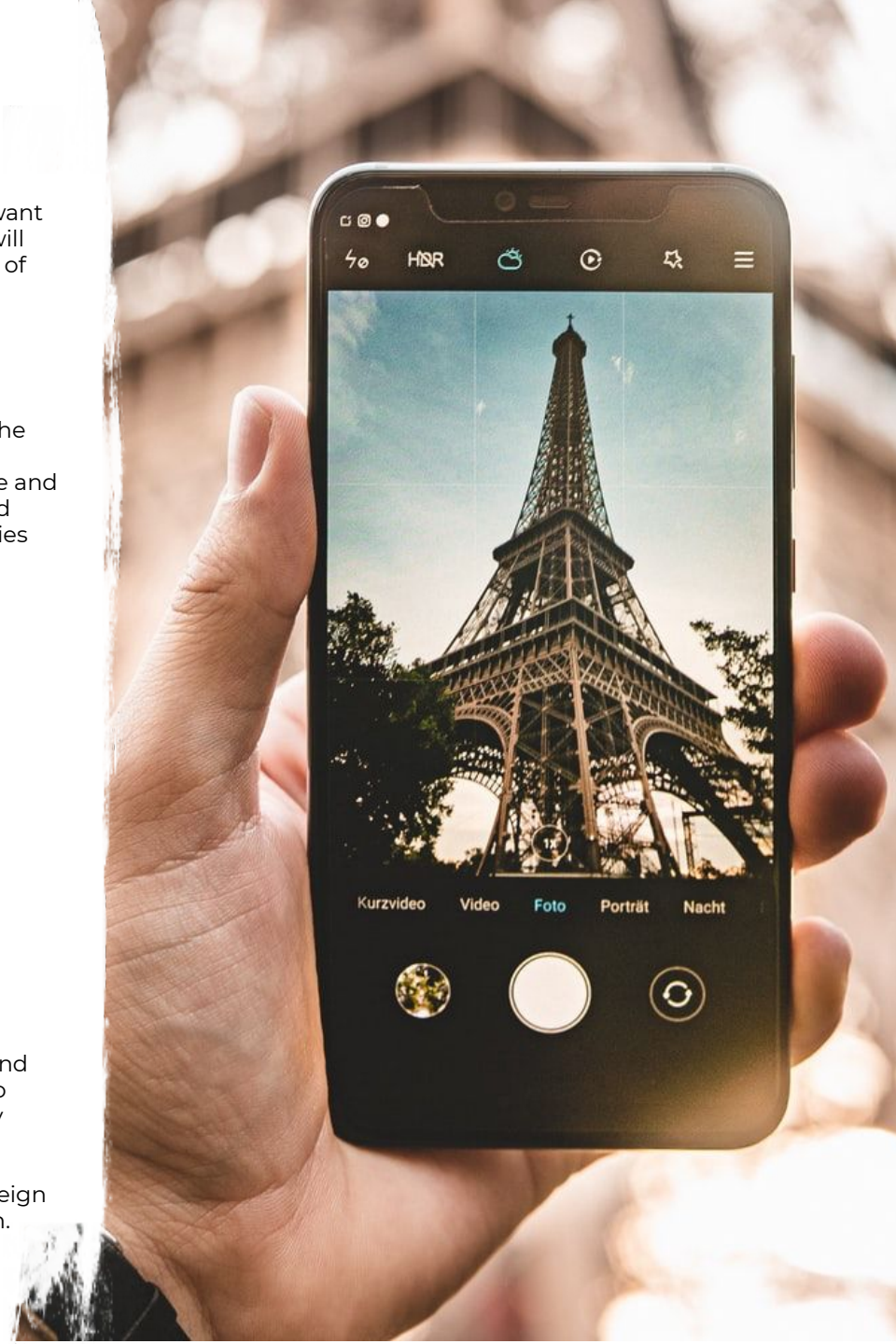
Higher tier is a 75 minute exam

Where this option could take you post 16:

Studying GCSE French isn't just for those who want to take French at A Level and go on to study languages at university. However, neither is it only for those who want to work in the travel/tourism industry. In today's global community, many employers are actively looking for people who can communicate in a foreign language.

Don't get left behind by your inability to communicate; gaining a GCSE in a foreign language will open many doors for you, whatever industry you go on to work in.

Exam Board: AQA



HISTORY

Are you suitable for this option?

Are you able to demonstrate that you can recall and apply a wide range of historical information, think logically, evaluate sources critically, and adapt your knowledge to build an argument supporting your findings? The study of History aims to stimulate and test the development of historical knowledge and understanding, the evaluation and interpretation of evidence and the ability to construct and communicate historical argument. The ability to produce extended writing is vital and therefore you need good literacy skills for this option.

What will you study in this course:

Unit 1 – Thematic study and the historic environment:
Crime and punishment in Britain c1000-present including Whitechapel c1870-1900: crime, policing, and the inner city.
Unit 2 – Period study: The American West 1835-95 & British depth study: Early Elizabethan England 1558-88.
Unit 3 – Modern depth study: Weimar and Nazi Germany 1918-39.

How will you be assessed:

There are three units of work, all examined at the end of Year 11:
Unit 1 30% of the final mark, is a written examination for 1 hour and 15 minutes.
Unit 2 40% of the final mark, is a written examination for 1 hour and 45 minutes.
Unit 3 30% of the final mark, is a written examination for 1 hour and 20 minutes.

Where this option could take you post 16:

Employers and universities regard History qualifications very highly. It can aid in a career in law, journalism or a job in the literary field. It can also lead to research jobs, a career in archaeology, jobs that involve travel and medicine. It can also be used in jobs in politics, social work, the police, the army or any jobs which require you to have an awareness of our culture or where you need to make evaluations based on detailed evidence.

Exam Board: Edexcel



GEOGRAPHY

Are you suitable for this option?

Are you keen to develop a knowledge and understanding of current events from the local area to global and gain an understanding and appreciation of the cultures and backgrounds of people from all over the world? Are you interested in investigating the Earth and its people and study the features of the Earth - such as mountains, rivers and seas - and how they were formed? Do you want a deeper appreciation of the UK, its features and the people who live here?

What will you study in this course:

The option consists of 3 units, and you will study a number of different topics within each unit:

Unit 1: Physical Geography: Natural Hazards (tectonics, weather and climate change), Physical UK Landscapes (rivers and coasts), The Living World (ecosystems, rainforests and cold environments)

Unit 2: Human Geography: Urban Issues and Challenges (mega cities, Rio, and Bristol), Changing Economic World, Resource Management (food, water and energy)

Unit 3: Geographical application/Investigation: This will include two opportunities for fieldwork where skills, method, results and evaluation techniques will be learnt and practised for a written exam. Studying this option will provide you with the opportunity to develop: communication skills, graphical and cartographical skills, technological skills including ICT, interpersonal skills through debate and discussion, literacy and numeracy skills, problem-solving skills as well as entrepreneurial skills.

How will you be assessed:

Unit 1 35% of the final mark; one written examination for 1 hour and 30 minutes (88 marks)

Unit 2 35% of the final mark; one written examination for 1 hour and 30 minutes (88 marks)

Unit 3 30% of the final mark; one written examination for 1 hour and 15 minutes (76 marks)

Where this option could take you post 16:

Geography could lead you to exciting career prospects. These include working in: urban planning, marketing, transportation, real estate, or tourism. It could also lead to you working in Geographic Information Systems forestry planning, the study of wetlands, water resources, weather forecasting, and land management. Geography achieves good examination results nationally and is one of the most versatile subjects. Also, it is classified as a science subject in many universities when studied at A Level.

Exam Board: AQA



TRIPLE SCIENCE

Are you suitable for this option?

Are you passionate about the Sciences and intent on studying pure sciences at a higher level? Are you making excellent progress in the subject at KS3?

What will you study in this course:

Each science Chemistry, Biology and Physics will be taught and assessed as a totally separate subject leading to the award of three GCSEs.

In this option, you will plan practical ways to develop and test your own scientific ideas. You will use your mathematical skills in calculations, formulae and graph work; and your literacy skills to communicate scientific ideas effectively. You will assess and manage risks when carrying out practical work.

The option will develop your skills in collecting and processing as well as analysing primary and secondary data. The use of scientific models and evidence to develop hypotheses, arguments and explanations will be an integral part of this option.

How will you be assessed:

In Year 11: Biology: Two written examinations (100%) Chemistry: Two written examinations (100%) Physics: Two written examinations (100%)

Where this option could take you post 16:

Studying Triple Science provides the foundation to study sciences at Sixth Form. The extra modules in Biology, Chemistry and Physics include many aspects of the A Level Sciences, making the transition into the Sixth Form easier. Not only does it allow you to get an extra qualification, but Triple Science is a highly regarded and recognised route in Science which supports applications to Universities.

Exam Board: AQA



OPTION SUBJECTS

- GCSE Art
- GCSE Business
- Cambridge National in Enterprise & Marketing
- GCSE Design
- GCSE Drama
- BTEC Health & Social Care
- Cambridge National ICT: Creative iMedia
- GCSE Media, Television and Film Studies
- GCSE Music
- BTEC Performing Arts
- GCSE Philosophy and Ethics
- GCSE Photography
- GCSE Physical Education
- BTEC Travel and Tourism

A reminder to talk
to the subject
teacher if you are
unsure about any
of these courses



ART

Are you suitable for this option?

Are you highly creative, enthusiastic, imaginative, and interested in experimenting with a wide range of materials and techniques to create visually exciting artwork? Are you able to work independently as well as be prepared to visit art galleries and museums to make your work more informed and interesting? Are you able to evaluate and appreciate a wide range of art disciplines, such as painting & sketching?

What will you study in this course:

You will create a portfolio of work, starting with Fine Art skills. You will then submit projects of work to be assessed where you can explore different Art disciplines. Each project can include sketchbook work, study sheets, experiments, models and conclusion pieces. You will produce one unit of work that shows development, from start to finish from a choice of starting points. You then have up to six weeks to produce preparatory work demonstrating the skills you have developed throughout the course. You will then be given 10 hours to produce a final piece under examination conditions.

How will you be assessed:

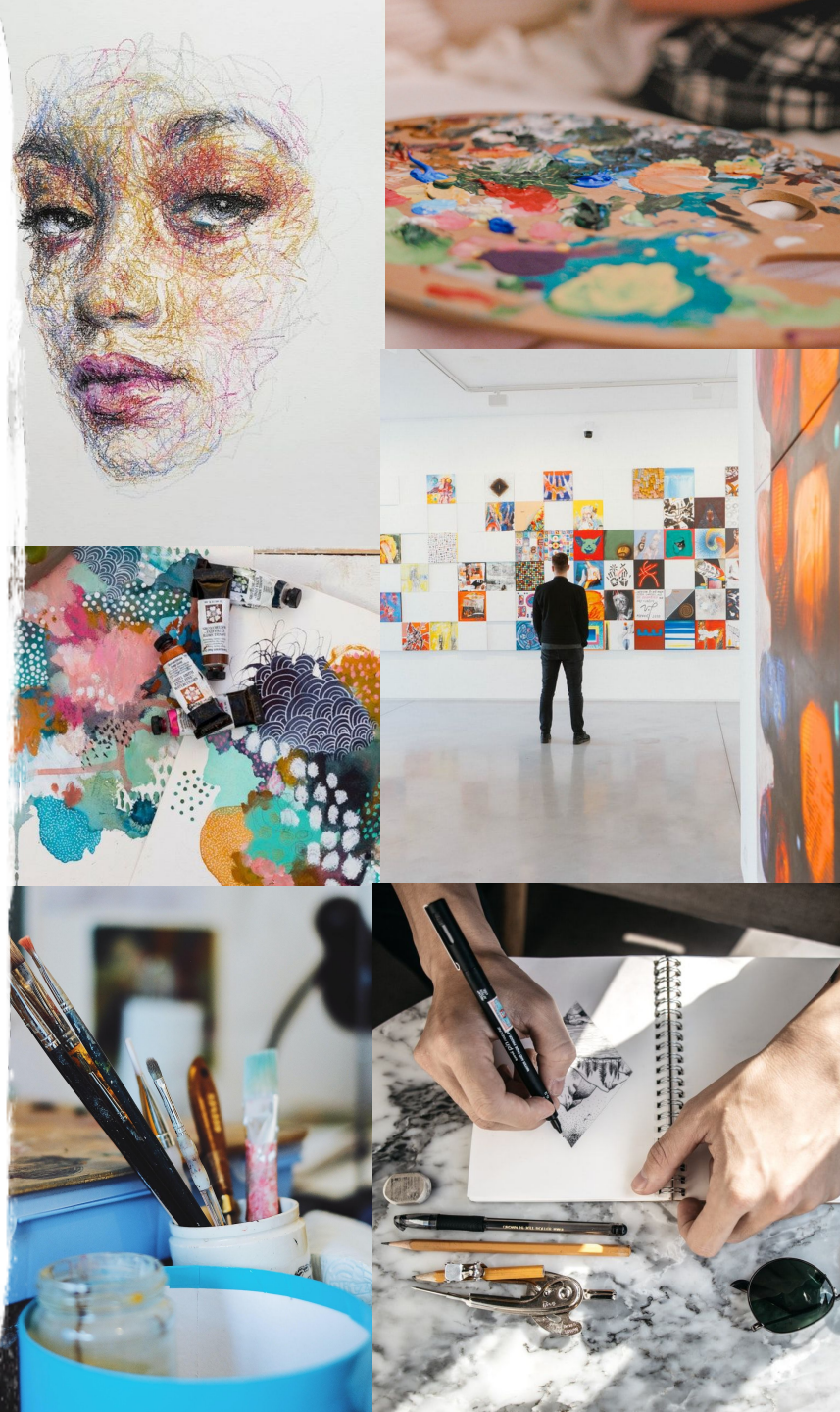
The Art GCSE is made up of two elements: Controlled Assessments (60% of final grade). The assessments require you to demonstrate your skills in the four assessment objectives: develop your ideas, refine these ideas through experimentation, record your own sources and produce a final visual response; A final 10 hour practical examination in Year 11 (40% of final grade). The examination revisits the four assessment objectives through assessment of detailed planning and justification of your understanding. Please note: Drawing is an essential part of this course.

Where this option could take you post 16:

GCSE Art and Design will help you to develop your creative, technical, communication, analytical and problem solving skills - skills that are essential in these and a wide range of other career opportunities, these include: Architecture, Animation, Illustration, Fashion, Textiles, Ceramics, Silversmithing, Jewellery, Visual Media, Graphics, Sculptor, Painter and Game Design to name a few!

Exam Board: AQA

Please note: Only one Art and Design subject can be taken at GCSE



GCSE BUSINESS

Are you suitable for this option?

Are you interested in the world of business and how businesses operate in today's society? Are you interested in the news and in how the government and its policies affect business operations and how business respond to them? Are you good at researching information and using data to investigate and solve problems? Are you well organised and keen to develop skills in critical analysis through a variety of written and discussion based tasks? Do you have that entrepreneurial flare that the likes of Richard Branson, Lord Sugar and Peter Jones started with and then made their own? Then this is the course for you!

What will you study in this course:

In year one you will concentrate on the key business concepts, issues and skills involved in starting and running a small business. It provides a framework for you to explore core concepts through the lens of an entrepreneur setting up a business. The focus in year one is local and national business contexts and you will develop an understanding of how these contexts impact business behaviour and decisions.

The final year of the course focuses on the key business concepts, issues and decisions used to grow a business, with an emphasis on aspects of marketing, operations, finance and human resources. Theme 2 also considers the impact of the wider world on the decisions a business makes as it grows.

How will you be assessed:

Paper 1 – Theme 1 Investigating Small Business (50% of the final grade).

Paper 2 – Theme 2 Building a Business (50% of the final grade).

Both papers are 1 hour 30 minutes offering a mix of multiple choice, short and long answer questions.

Where this option could take you post 16:

Business Studies is an exciting and dynamic subject to study at any level, because it's current and it's constantly changing and no two days in business are ever the same. You will gain skills that will be useful in a wide range of occupations such as Law, Accountancy, Business Management and any business you find yourself working in, as well as for further study to degree level.

Exam Board: Edexcel



Not
previously
studied at
KS3

CAMBRIDGE NATIONAL BUSINESS AND ENTERPRISE

Are you suitable for this option?

Are you interested in the world of business and possibly want to go on to study at a higher level? Are you considering owning your own business, or have an interest in enterprise and marketing? Are you passionate about learning new vocational skills and knowledge that will compliment other GCSEs? Are you self-motivated, resilient, and able to meet deadlines with both classwork and homework? Then this is the course for you!

What will you study in this course:

This course provides an exciting platform to explore how businesses work with a focus on enterprise and marketing. You will study three units throughout the two year course:

R064 Enterprise and Marketing Concepts - where you will learn how businesses target a market, the market research methods businesses adopt, how they ensure a product is financially viable, product development, how to attract and retain customers, factors to consider for a start-up business and the functional activities needed to make a business successful.

R065 Design a Business Proposal. Establish a market for a product, develop design ideas for a specific target audience, calculate the financial viability for a product and reflect and review strategies adopted.

R066 Market and Pitch a Business Proposal. You will develop branding and promotional materials for a product and prepare and deliver a business pitch to actual business representatives, demonstrating your skills of communication, financial capability and product branding and development

How will you be assessed:

R064 Enterprise and Marketing concepts - 1 hour 30 minutes exam which is externally assessed and is 50% of the qualification

R065 Design a business proposal - internally assessed coursework 25% of course

R066 Market and pitch a business proposal - internally assessed coursework 25% of course

Where this option could take you post 16:

Studying a Cambridge National in Business Enterprise and Marketing, provides the foundation to continue the subject at A level, further education, an apprenticeship or work. It can lead to university opportunities and careers in a variety of business roles and of course key skills in running your own business.

Exam Board: OCR



Not
previously
studied at
KS3

DESIGN

Are you suitable for this option?

Are you creative and eager to develop your design skills? Are you interested in a field of creative design like architecture, interior design or even fashion design? Are you able to communicate your ideas visually through detailed and refined sketchbook work? Are you interested in developing your projects through drawings, modelling and other practical techniques? Can you analyse and appreciate the work of other designers? Are you confident when interpreting your designs in to final responses? Can you work independently and meet deadlines?

What will you study in this course:

You will learn to independently research, design and develop original design concepts. Whilst gaining the skills you need to produce imaginative designs, you will produce a portfolio of visual and written work that shows the development of your ideas, from start to finish. Each project will include sketchbook work, experiments, models and conclusion pieces. At the end of the course, you will produce one unit of work that shows development, from start to finish from a choice of starting points set by AQA linked to a theme of your choice. You then have up to six weeks to produce preparatory work demonstrating the skills you have developed throughout the course. You will then be given 10 hours to produce a final creative piece under examination conditions.

How will you be assessed:

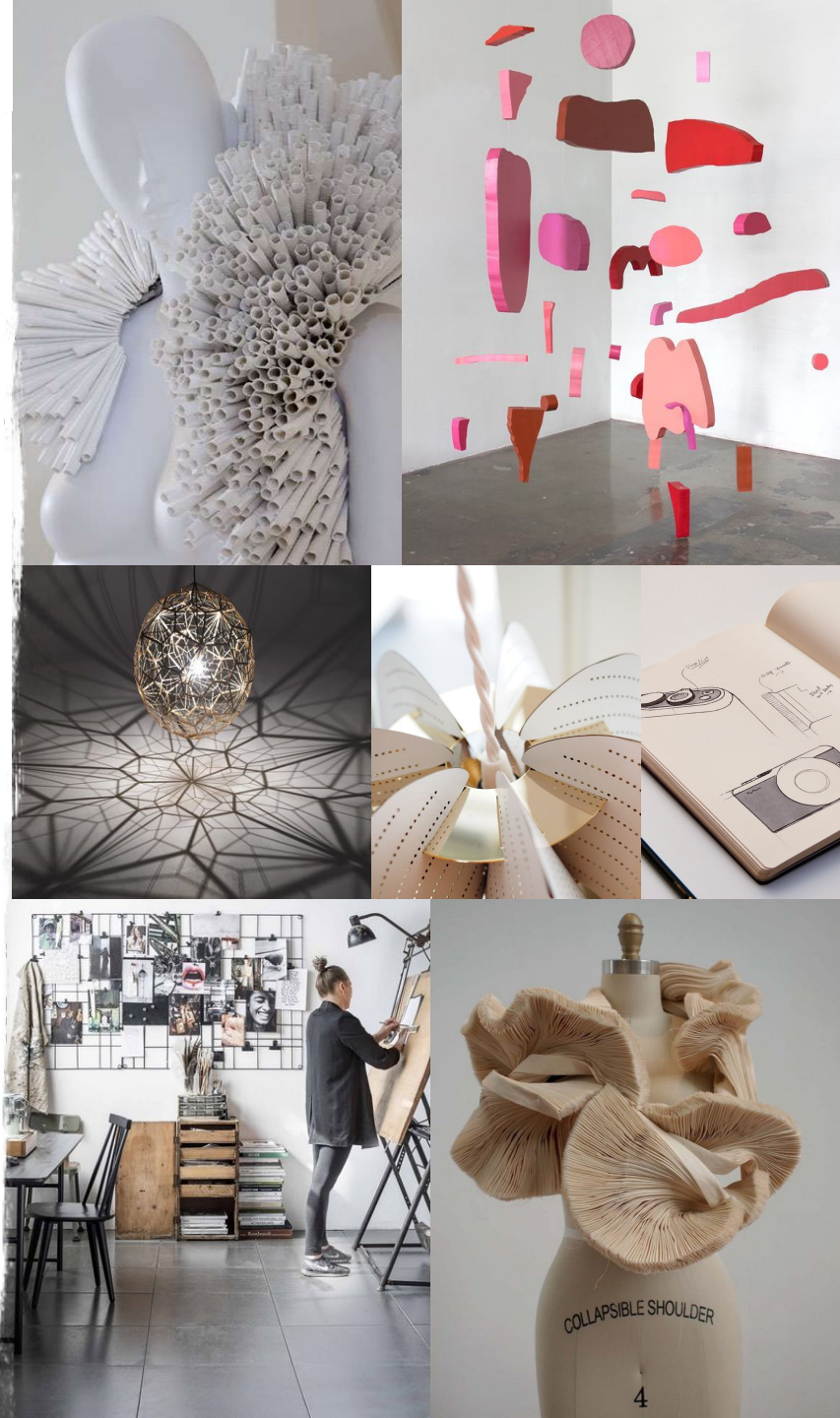
GCSE Design is made up of two elements: Controlled Assessments (60% of final grade). The assessments require you to demonstrate your skills in the four assessment objectives which are split equally. Research and the development of ideas, refining these ideas through experimentation, drawing skills and final 3D responses. A final 10 hour practical examination in Year 11 (40% of final grade). The examination revisits the four assessment objectives through assessment of detailed planning and justification of your understanding of a design theme. Please note: Drawing is an essential part of this course.

Where this option could take you post 16:

With a GCSE in Design you could progress to study subjects such as Interior Design, Product Design, Textiles, Jewellery Design,, Fashion Design, Architecture, Footwear Design and Graphics . You can also use the course as a stepping stone, equipping you with the skills to continue the subject with confidence at AS, A-level, College and beyond.

Exam Board: AQA

Please note: Only one Art and Design subject can be taken at GCSE



DRAMA

Are you suitable for this option?

Are you a strong performer who is creative, motivated and committed? Have you performed to a high standard in class at KS3? Do you have experience of Drama either in extracurricular activities or at outside Drama groups? Are you able to work effectively in a group? Are you a reflective thinker? During GCSE Drama, you will need to be able to analyse your work and others' performances both verbally and in written work. Are you dedicated? Most students that choose Drama have a strong commitment to it, spending many hours out of school in Theatre Groups.

What will you study in this course:

During the course you will learn and develop the following Drama techniques and skills: Unit 1: Devising Drama - You will research and explore different stimuli through Drama techniques and group work. Unit 2: Presenting and Performing Texts - You will develop and apply your acting skills from different written extracts from texts and plays. Unit 3: Performance and Response - A good level of English is a benefit as you explore a performance text through practical work. You will also write a written response by analysing and evaluating a live performance. Unit 3: Performance and Response A good level of English is a benefit as you will explore a performance text through practical work. You will also write a written response by analysing and evaluating a live performance.

How will you be assessed:

Unit 1: Devising Theatre: 30% of final grade

Unit 2: Presenting and Performing Texts: 30% of final grade

Unit 3: Performance and Response: Written examination; 40% of final grade.

Where this option could take you post 16:

This option could lead you to further study the subject at A Level, a career as a Professional Performance, Directing/Production of the Arts, Arts Administration and PR, Media, Journalism, Advertising and Marketing, Public Services, Education, Coach/Trainer/Instructor, Childcare and Sales.

Exam Board: OCR



HEALTH AND SOCIAL CARE

BTEC Tech Award

Are you suitable for this option?

Are you interested in the Health and Social Care sector and possibly want to go on to study at a higher level? Are you considering a career within the Health Care sector? Do you want to learn about how humans develop from birth to old age? Are you passionate about learning new vocational skills and knowledge that will compliment other GCSE's? Are you highly self-motivated, resilient, and able to meet regular deadlines with both classwork and homework?

What will you study in this course:

This course provides an exciting introduction to the health and care sector. You will study three components throughout the two year course:

Human Lifespan Development Here you will learn about how we change and develop throughout our lives from babies into older adults. You will explore the lifestyle choices, factors and life events that affect us and how we manage change.

Health & Social Care Services and Values This component looks at which services are available and why people might need to use them. You will discover what might prevent someone from accessing these resources and the care values used by health and care professionals to ensure people get the care and protection they need.

Health & Well-being You will explore what being healthy means to different people and the factors that influence health and well-being, You will learn key health indicators and how to make health assessments. You will create a health and well-being improvement plan and consider the challenges of putting this plan into place.


How will you be assessed:

Component 1 and component 2 are each worth 30% of your total grade and are completed through internally assessed assignments. Component 3 is worth 40% of your total grade and is assessed through a series of tasks set and assessed by the examination board.

Where this option could take you post 16:

Studying BTEC Health and Social Care provides the foundation to study the subject at level 3 and higher at Sixth Form or College. It can lead to university opportunities and careers in a variety of roles including becoming a nurse, midwife, paramedic, pharmacist, social worker, physiotherapist, healthcare assistant, teacher, nursery worker and many more.

Exam Board: Pearson



Not
previously
studied at
KS3

CAMBRIDGE NATIONAL CREATIVE IMEDIA

Are you suitable for this option?

Recent studies show that the Creative Industries are one of the fastest growing parts of the UK economy. Studying this qualification will help you develop the skills you need to thrive in a digital world, where simple ideas can be developed into apps, videos, images and websites and go viral within days, hours or even minutes.

You will learn how people in the creative workplaces collaborate, communicate and work together to develop these powerful ideas and progress your skills in creating content within the mediums of the web, digital graphics and animation.

What will you study in this course:

Unit R081: Pre-production skills: You will learn about how groups of people work together in the creative industries to plan and create the apps, websites, digital graphics and other products that billions of people interact with across the world everyday.

Unit R082: Creating digital graphics: You will learn how digital graphics interact with almost every part of our everyday lives and get an opportunity to practise the skills needed to design and create bright and attractive digital graphics.

Unit R085: Creating a multipage website: Websites are such a huge part of everyday work and play. In this unit you'll learn what makes a website click and develop the skills in creating your own.

Unit R086: Creating a digital animation: Be it animation in film, TV or on the web, you'll learn the process and technique behind digital animation in this unit.

How will you be assessed:

Unit R081: Exam worth 25% of the final grade.

Unit R082, R085 and R086: Assessed through a practical task-based assessment with OCR-set tasks, each worth 25% each

Where this option could take you post 16:

Post 16 routes range from apprenticeships in the creative digital media industry to video game or web design courses or A levels and vocational qualifications in ICT.

Exam Board: OCR



GCSE MEDIA, TELEVISION & FILM STUDIES

Are you suitable for this option?

Do you enjoy watching television and films, listening to music and the radio, have an interest in the news and the world around you and enjoy creating videos and taking photos?
Do you have good literacy skills and stamina for writing? Are you prepared to become a 'media sponge'; reading, watching, listening and researching widely - involving TV programmes, films, radio stations, websites and magazines/newspapers you wouldn't normally choose?

Media, Television & Film Studies is the exploration of the various communications that surrounds us. Whether we like it or not, we are surrounded by the media and this course will enable you to question and challenge how media is constructed and how we are manipulated by it.

What will you study in this course:

In this course you will study how the media works; how to investigate who is behind the messages conveyed by the media and to understand, (in order to enjoy or resist), the influence of advertising, broadcasting and mass communication through the internet. You will develop skills to become more media-literate in order to appreciate, be critical of and evaluate the messages to which we are exposed. You will develop critical thinking and decision-making skills through the consideration of issues that are important, real and relevant in our modern society.

How will you be assessed:

Unit 1: Written Exam 40%: **Exploring Media Language and Representation.** Topics to include newspapers, radio news/current affairs, advertising, video games, magazines and music videos.

Unit 2: Written Exam 30%: **Understanding Media Forms and Products.**

Questions will focus on the development of a TV genre over time and the music industry including artists' websites

Unit 3: (non-exam) 30%: **Creating Media Products.** Students will create their own authentic media product, such as a music video, a band's home webpage, magazine pages, film marketing products, opening sequence to a new TV drama etc. Note: student choices of practical work will be guided by teacher expertise and the school's available resources.

Where this option could take you post 16:

Media Studies has been developed in response to the society in which we now live. Students of Media often go on to careers in journalism, marketing, sales and advertising, broadcasting, research, product design and public relations. The skills required for success in Media Studies directly benefit students for a wide range of careers in the modern workplace - and for employment in positions which have yet to be invented in our rapidly-changing world.

Exam Board: WJEC Eduqas



Not
previously
studied at
KS3

MUSIC

Are you suitable for this option?

Do you have an enthusiasm for music and a willingness to listen and appreciate it in all its contexts? Are you an aspiring musician or singer, committed to regular practice? Do you have the commitment to learn musical theory and learn how to use musical terms correctly in order to analyse and appreciate different styles of music? Are you prepared to practise your instrument in your own time for solo performance as well as working with others on ensemble pieces within lessons?

What will you study in this course:

In this option you will learn to read musical scores and will analyse music from a variety of genres through the study of eight set works.

You will develop your listening skills as a musician and will write about the music that you hear.

You will develop composition skills using notation and sequencing software as well as by using your instrument to prepare composition ideas.

How will you be assessed:

Unit 1: Performance - Controlled Assessment (30% of final grade)

Unit 2: Composition - Controlled Assessment (30% of final grade)

Unit 3: Listening and Appraising - Written examination of 1 hour 45 minutes (40% of final grade).

Where this option could take you post 16:

The course could lead you to study Music or Music Technology at A Level, as well as a range of vocational Level 3 qualifications in music and could then lead to a job or career in the music industry as a: Singer, Composer, Music Publicist, Producer, Recording Technician or Music Therapist to name but a few.

Exam Board: Edexcel



PERFORMING ARTS

Are you suitable for this option?

Are you a strong performer who is creative, motivated and committed? Are you interested in exploring Units in Drama and Dance? Have you performed to a high standard in class at KS3 Drama? Have you been involved and have an interest in Plays, Musicals, Performance work and Theatre production? Are you able to work effectively in a group? Are you a reflective thinker? During BTEC Performing Arts, you will need to be able to analyse your work and others' performances both verbally and in written work, for both Drama and Dance. Are you dedicated? Most students who choose Performing Arts have a strong commitment to it, spending many hours in school, practising their work, and also out of school in Theatre Groups.

What will you study in this course:

During the course you will learn and develop the following techniques and skills: The Units will be selected by the Head of Performing Arts and the Teachers within this Faculty. The Units will be a mixture of Drama and Dance, focusing on Performance, Choreography (Dance), Devising (Drama), Theatre Production and Group work. Each Unit will include a detailed Written Portfolio, outlining the Process, Performance Unit, the ideas and Evaluation of their work overall. Written work needs to be of a high standard in order to maintain a high result level overall. Extra rehearsal time will be essential in the completion of all Practical and Theoretical elements.

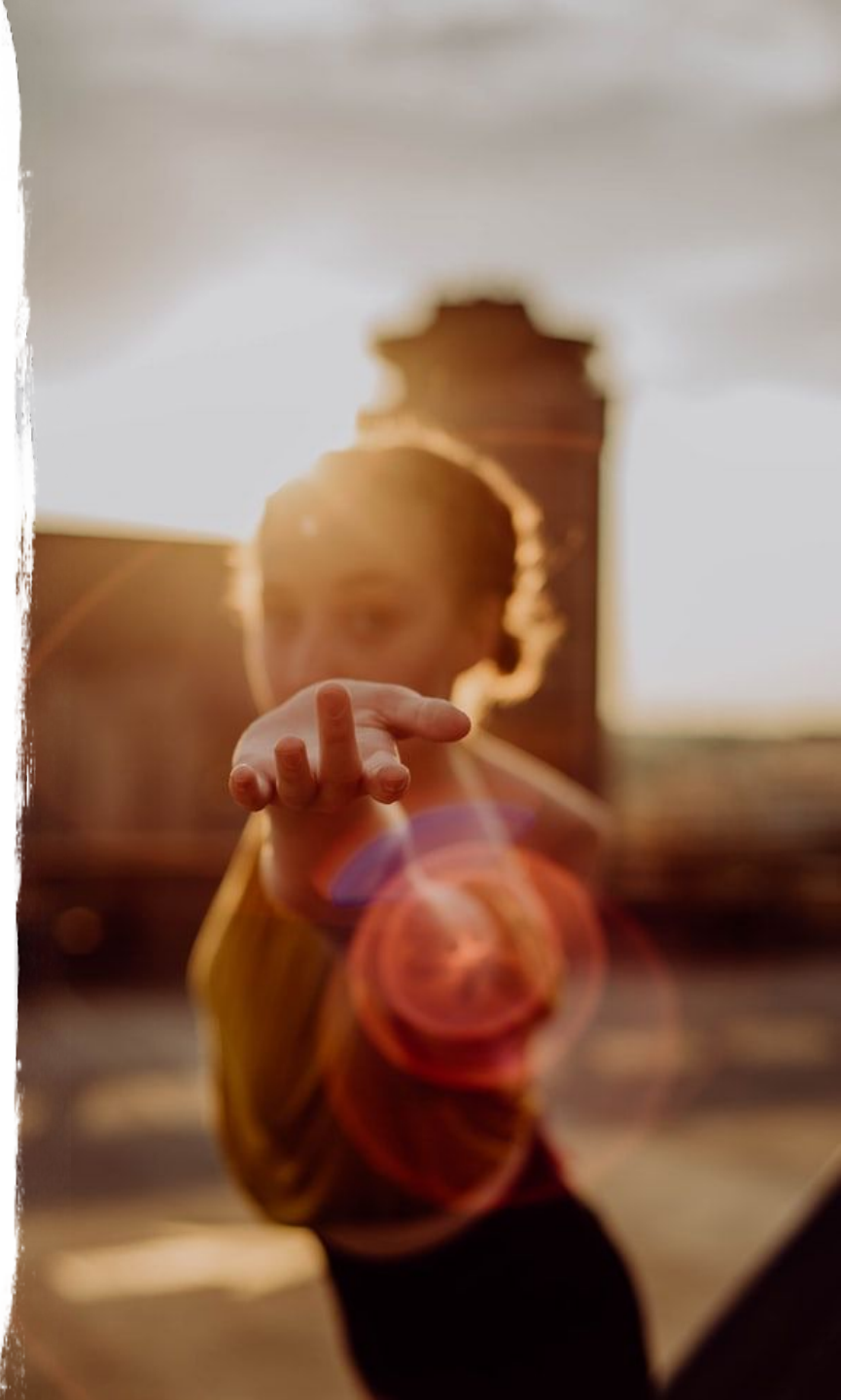
How will you be assessed:

Unit 1: Exploring Performing Arts: Internally assessed (Written Portfolio with Practical workshops)
Unit 2: Individual focus/ performance: Internally assessed (Written Portfolio with Practical workshops & Performance)
Unit 3: Devising: Externally assessed (Portfolio with final External Performance Assessment)

Where this option could take you post 16:

This option could lead you to further study the subject at A Level within the umbrella of Performing Arts; Dance, Acting and/or Musical Theatre courses. A career as a Professional Performance, Directing/Production of the Arts, Managerial within the Arts/Theatre, Arts Administration and PR, Media, Journalism, Advertising and Marketing, Public Services, Education, Coach/Trainer/Instructor, Childcare and Sales.

Exam Board: Pearson BTEC LEVEL 1/2 First Award in Performing Arts



PHILOSOPHY AND ETHICS

Are you suitable for this option?

Are you someone who has their own opinions? Do you want to strengthen your skills and be able to express these, using evidence and examples to support your views?

Are you interested in learning about what other people do, and investigate why they do them?

What will you study in this course:

The course is split up into six areas. You will study the beliefs and practices of two religions - Christianity and Islam. This will cover philosophical beliefs. There are then four themes of study - Relationships and families where you will be looking at things like marriage, divorce, homosexual relationships and contraception. Religion and Life which covers topics such as abortion, euthanasia and fertility treatment and genetic engineering. Peace and Conflict covering war, pacifism and extremism and finally will Crime and Punishment looking at the death penalty, punishment and forgiveness.

This GCSE explores current affairs, dealing with real issues and at times discussing difficult and sensitive topics. You will learn how to discuss these issues from different points of view, looking at empathy and how to respond to these issues and justify answers. There will be a lot of discussion and the chance to put your point across about things that are going on in the world today.

How will you be assessed:

There are two, 1 hour and 45 minute papers in this option:

Beliefs and Practices for Christianity and Islam worth 50%

Based on the ethical themes listed above worth 50%

Where this option could take you post 16:

Just as important in explaining the rise in the number of students taking Philosophy and Ethics is the fact that employers really value the qualification. As one major High Street computer games retailer recently told its recruitment teams: 'when employing, staff look out for students of Philosophy and Ethics - they are usually very solid, reliable thinking people who are likely to have good logical skills and also be very people oriented'.

Exam Board: AQA



PHOTOGRAPHY

Are you suitable for this option?

Are you creative with your camera? Do you want to learn how to take the perfect picture? Are you interested in further developing your knowledge and understanding of Art? Do you wish to learn about the craft, media and technologies of today and of the past? Are you interested in developing your artistic skills and expanding your creativity, imagination and independence? GCSE Photography is a very specialist, technical and exciting subject which allows you to be creative using different digital media.

What will you study in this course:

This course aims to enhance your photography skills. Learning how to use a DSLR camera, you will produce a number of different projects focussing on a variety of skills and techniques. During this option you will use an online slide presentation for research, development of ideas, experimenting with different themes and exploring different kinds of photography. To support this you will also study the work of other photographers and artists in order to inspire and improve your own photographic work. You will then produce final high-quality outcomes, completed image or series of images, professionally presented as a final response.

How will you be assessed:

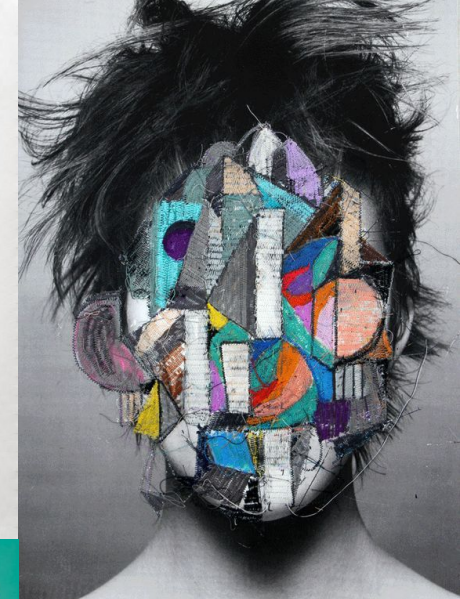
The Art and Design - Photography GCSE is made up of two elements: Controlled Assessments (60% of final grade). The assessments require you to demonstrate your skills in the four assessment objectives: develop your ideas, refine these through experimentation, record your own sources of research and produce a final response. A final 10 hour practical examination in Year 11 (40% of final grade). The examination revisits the four assessment objectives through assessment of detailed planning and justification of your understanding.

Where this option could take you post 16:

The course is good preparation for progression to A Level in Art and Design: Photography – Lens and Light-based Media or a relevant college/vocational course. It could lead towards a career in Fine Art, New Media, Games Development or Games Technologies, as well as Digital Photography and Video.

Exam Board: AQA

Please note: Only one Art and Design subject can be taken at GCSE



Not
previously
studied at
KS3

PHYSICAL EDUCATION

Are you suitable for this option?

Are you able to work well in a team as well as individually? Do you have a good level of ability in practical PE and ideally have a good level in science as well? Are you able to relate your interests in physical activity to a theoretical context? Are you committed? Students that choose PE have a strong commitment to it, spending time out of school practicing and refining skills in sport.

What will you study in this course:

The Physical Education option has a prescribed content with a great emphasis on science in an applied context, and therefore 60% of the mark is from 2 theory exams at the end of Year 11. Practical assessment is 30% to show what you can achieve practically in 3 different sporting areas from the exam board list (1 team sport, 1 individual and 1 of your choice) and 10% of the final mark is down to an assessed piece of coursework.

- Component 1: Fitness and Body Systems (1hr 45 min exam)
- Component 2: Health and Performance (1hr 15 min exam)
- Component 3: Practical Performance (3 practical sports as above)
- Component 4: Personal Exercise Programme (PEP 6 week training programme)

How will you be assessed:

- Two written theory examinations - component one worth 36% and component two worth 24%
- Practical examination where you will be assessed in three different practical activities: one team, one individual and another from either list - 30%
- Planning, carrying out and analysing a written personal exercise programme on a chosen activity from the specification list worth 10%.

Where this option could take you post 16:

GCSE Physical Education functions as a pathway to further qualifications in sport and can open the door to the multi-billion pound health and fitness industry which could include: Health & Exercise Management, Sports Science, Physiotherapy, Lifeguard, Teaching, Coaching and Personal Training, Sports Performance, Public Health, Sport and Exercise Participation, Media & Marketing, Science, the Fitness Industry and many others.

Exam Board: Edexcel



TRAVEL AND TOURISM

BTEC Tech Award

Are you suitable for this option?

Are you interested in the Tourism sector and possibly want to go on to study at a higher level? Are you considering a career within the Tourism sector? Are you passionate about learning new vocational skills and knowledge that will compliment other GCSEs? Are you highly self-motivated, resilient, and able to meet regular deadlines with both classwork and homework?

What will you study in this course:

This course provides an exciting introduction to Tourism. You will study three components throughout the two year course:

Component 1: Travel and Tourism Organisations and Destinations

Component 2 : Influences on Global Travel and Tourism.

Component 3: Customer Needs in Travel and Tourism.

How will you be assessed:

Component 1 and component 3 are completed through internally assessed assignments. Component 2 is assessed through an examination which is externally marked by the exam board Pearson.

Where this option could take you post 16:

The travel and tourism sector is the UK's third largest employer, accounting for 9.5 per cent of total employment. Tourism is one of the fastest growing sectors in the UK in employment terms, employing nearly 3 million people. Studying BTEC Tourism provides the foundation to study the subject at level 3 and higher at Sixth Form or College. It can lead to university opportunities and careers in a variety of roles including becoming travel agents, event management, hospitality industry, air stewarding, working at theme parks and attractions and many more. and one of the fastest growing areas of the economy nationally.

Exam Board: Pearson



REDMOOR AT KEY STAGE 4 AND ALTERNATIVE CURRICULUM

GCSEs can be a daunting prospect for some students who may require a high level of support and a reduced number of GCSE courses to study. This is not an option students can choose but one that will be recommended to some students based on our knowledge of their progress and the best methods of learning for them. For these students there will be an alternative programme of study, to run alongside their core GCSE subjects. Our current alternative curriculum includes the following courses:

- Vocational qualifications
- Certificates and awards (pre-GCSE courses)
- Life Skills course
- Study Support

Parents will be notified if it is felt that their child may benefit from this alternative curriculum and you will be given an opportunity to discuss this in detail with a member of staff. We believe that focusing on a smaller number of GCSE courses can help raise achievement whilst also developing other important skills and experiences.



REDMOOR OPTION CHOICE FORM 2020

Name:	Tutor Group:
-------	--------------

Core: All students will study English (Language & Literature), Maths, Double Science, Core PE and Personal Development.

English Baccalaureate Subjects: Please select **ONE** subject from the list below:

Choice	EBACC Subjects
	GCSE Computer Science
	GCSE French
	GCSE Geography
	GCSE History
	GCSE Triple Science



Additional Option Subjects: Please select any **THREE** subjects from the list below and rank them in order of preference, 1st, 2nd, and 3rd.

Then select **two** reserve choices and rank them in order of preference using R1, R2.

Additional Option Subjects	
	Cambridge National ICT
	GCSE Media Studies
	GCSE Music
	BTEC Performing Arts
	GCSE Philosophy & Ethics
	GCSE 3D Design
	GCSE Physical Education
	BTEC Travel & Tourism
	GCSE Triple Science
	BTEC Health and Social Care

To achieve the full **English Baccalaureate**, you must opt for **French** and a humanities subject (**History/Geography**).

If you have discussed following our **alternative curriculum** offer and a reduced number of GCSEs, please select the number of options you have been advised to choose. This can be different for each student following this pathway.

Signed: Student:	Signed: Parent/Carer:
Date:	Date:
Signed: Tutor:	
Date:	

Deadline for return: *Friday 26th February 2021 by 10am*



YOUR REDMOOR FUTURE
STARTS HERE