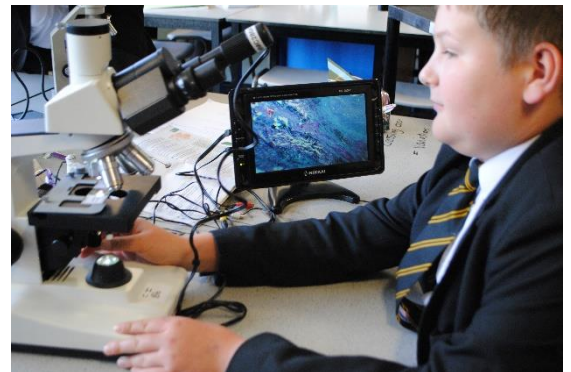


Boroughbridge High School

Information for Candidates



Welcome from the Headteacher

Thank you for your interest in working at Boroughbridge High School. The information in this booklet is designed to give you a flavour of our school and to inform your decision making. You can also find out further information on our website at www.boroughbridgehigh.com

At Boroughbridge High School, our belief in 'Aspiration for all' means that our students are at the heart of our decision making. We know that students are successful when they are safe and happy as is demonstrated in our excellent exam results. We are an Ofsted rated 'Good' school.

With almost 500 students, aged 11-18, we serve the community of Boroughbridge and the surrounding area, which gives our school a welcoming, inclusive atmosphere. We feel like a family and, as such, we know our students well making Boroughbridge High School a good place to work and learn. We strive to ensure that all students leave our school, not only with the qualifications they need to access the next stage of their education or career of choice, but with the skills and confidence to make an active contribution to the communities to which they belong.

We understand that this can only be achieved with excellent teaching and effective support through highly committed staff. Therefore, if you were to be successful, you would benefit from working as part of a supportive staff team with opportunities for personalised CPD both within school and beyond. Wider partnerships are important to us and we are federated with King James's School Knaresborough with whom we share Sixth Form provision. We also benefit from being part of the Yorkshire Teaching School Alliance and White Rose Alliance.

I hope that the opportunity that we have is of interest to you. Thank you for considering Boroughbridge High School.

Kathryn Stephenson
Headteacher.

Safe and happy students are successful.

Information about the school

Engaging and inspiring curriculum

High quality teaching within an engaging and inspiring curriculum ensures that students are motivated to learn.

At Key Stage 3

We have a three year Key Stage 3 curriculum enabling students to study the full range of National Curriculum subjects in depth along with an extensive PSHE (Personal, Social, Health and Economic) programme. Students begin to personalise their curriculum at the end of Year 8 before making their GCSE option choices at the end of Year 9.

At Key Stage 4

At GCSE students follow a Stage not Age curriculum which means that they study two of their four option subjects in Year 10, taking the exam at the end of Year 10. This enables students to secure two GCSE qualifications whilst developing deep knowledge of exam technique in Year 10 which they can then apply to their subjects during Year 11. All students have access to an EBacc curriculum.

At Key Stage 5

The Sixth Form enables students to extend their educational experience at BHS post-16. We are part of a collaboration with King James's School, Knaresborough, which broadens the curriculum offer. Many of our students go on to University with others securing Apprenticeships or employment.

'You have introduced your Stage not Age curriculum which means that the most able pupils can make more rapid progress.' Ofsted

Across the Key Stages, our Personal, Social, Health and Citizenship education programme prepares students for the challenges of life beyond school. Careers education is an integral part of the curriculum in all years. Students have the opportunity to work with our qualified careers advisor along with attending careers conferences, listening to visiting speakers, carrying out mock interviews and meeting people from the local community along with work experience. This means that students have a detailed knowledge of the options available to them so that they can make an informed choice.

Our students go on to a range of options including further and higher education, Apprenticeships and full-time employment.

'Pupils are confident, self-assured, and willing to volunteer answers in lessons and support each other to do well.' Ofsted

Leadership skills for life

Because we have a commitment to ensuring that students have the skills and confidence to make an active contribution to the communities in which they belong, we encourage students to take every opportunity to develop their leadership skills.

Students across the age range have the opportunity to contribute to whole school decision making by becoming part of the School Council. The student and staff elected Head Students, their Deputies, Senior Ambassadors and Prefects are directly responsible for the organisation and running of the council and lead committees on a range of issues and fundraising activities. Students also have the opportunity to get involved in activities such as Young Enterprise and the Duke of Edinburgh's Award.

'Learners take opportunities to be involved in the wider life of the school, for example they run a variety of clubs for younger pupils to be involved in.' Ofsted

Consistently high quality teaching and learning ensuring Aspiration for all

We celebrate the fact that all students are individual but we are consistent in having the same high expectations of all and are committed to supporting students to make maximum progress. Through Teaching and Learning Agreed Practice for teachers, we ensure that we use data intelligently to plan for individual student needs.

Alongside this detailed planning, where students have Special Educational Needs or Disabilities, we have an experienced team of support staff who offer further support in two main ways: the assistance of extra support in the classroom and through individual or small groups sessions. These include interventions for students who need support with their literacy and numeracy skills.

'Pupils feel well cared for and supported. They know that their teachers are aspirational for them and this is motivating them to work hard.' Ofsted

Students are well supported at Boroughbridge High School. Students begin each day with their Form class and Form Tutor who will check that they're ready for the school day ahead. They will also monitor their personal and academic progress. Each year group has a Pastoral Manager who oversees their wellbeing and monitors their Attendance, Attitude to Learning and Behaviour for Learning so that they can support students if and when necessary.

Students will also be taught by a range of subject teachers. Students are encouraged to approach any member of staff if they need help or have anything that they wish to discuss.

'Pupils have very positive attitudes to all aspects of their learning.' Ofsted

Creating a positive learning environment

Visitors to our school are always impressed by the welcoming, calm and friendly atmosphere around the school. This does not happen by chance but is as a result of our high expectations around behaviour, uniform and being ready for learning.

We have an Attitude to Learning and Behaviour for Learning scale so that students know what is expected of them. These are complemented by our Boroughbridge High School Standards which ensure that students have the same high standards outside of the classroom. These and our Climate for Learning system are linked to our Rewards system so that students understand that how they conduct themselves every moment of every day is important.

'The open culture in the school ensures that pupils know who to go to if there is a problem. Pupils told us that they could approach any teacher and they would help.' Ofsted

