

# Year 1 Welcome Meeting

13<sup>th</sup> September 2022

# The Year 1 Team

Miss Swan: all day, everyday!

Outdoor Afternoon: Mr Moore, Mrs Swan and Mrs Collins

Music: Mr John

PE: Mr Maiello

# A typical day in our Class...

KS1 Timetable Year 1

	8.55 – 10.00am		10.10 – 11.00		11.10 – 12.00pm		1 - 1.15	1.15 – 2.00pm	2.00pm – 3.00pm	3pm - 3.15pm			
Monday	Morning Challenge – Morning Challenges		Phonics and Reading	English – Writing focus	PE - NUFC	Lunch Time	Handwriting	Music	PSHE	Assembly 2.50 – 3.10pm			
Tuesday										Maths including High Five	Subject Focus Time		Class Story
Wednesday										Maths including High Five	Subject Focus Time		Assembly 2.50 – 3.10pm <i>Singing Focus</i>
Thursday										Maths including High Five	Subject Focus Time		Class Story
Friday										Maths including High Five	Forest School afternoon		
			Break Time										
	Assembly 9 – 9.20am	Phonics	Curriculum Enrichment Project – Subject dependent.										



# Key information...

## P.E

---

PE sessions will take place on a Monday.

## Outdoor Day/Forest Schools

Outdoor Day will take place every Friday.  
More information (including a Forest School Handbook) to follow.

# KS1 Reading and Phonics



Our whole school focus this year is to support our children to become fluent readers. ***What do we mean by fluency?*** In the context of literacy, reading fluency is defined as reading words correctly, at an appropriate speed and with the appropriate stress and emphasis.

Fluency is not simply about the speed with which you read a book.

**"So it is with children who learn to read fluently and well: They begin to take flight into whole new worlds as effortlessly as young birds take to the sky."**

**William James**



# How do we teach Phonics in Key Stage One?

---

## Daily Phonics Lessons

- Children learn to read and write words using new sounds.
- Children are taught to read and write tricky words.
- Phonics Screening



“

**Phonics is:**

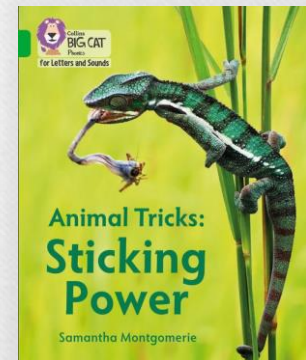
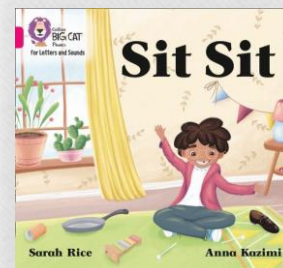
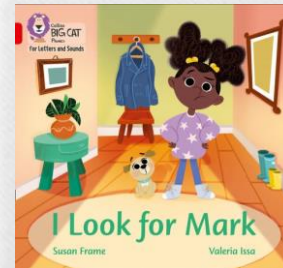
making connections between the sounds of our spoken words and the letters that are used to write them down.

”

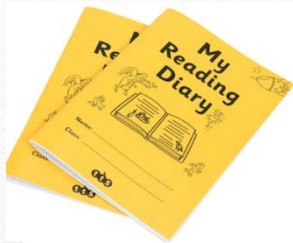
# How do we teach reading in books?



Reading practice sessions are:  
timetabled three times a week  
taught by a trained  
teacher/teaching assistant  
taught in small groups of 6.







# Reading at Home



Your child will take home a phonics based reading book every week. This book will be carefully selected to match their individual progress. Your child should be able to read 95% of the book fluently (e.g. only need to decode 1 word out of 10.) We encourage you to share this book again and again and again with your child until they are reading it fluently and confidently.

## Little Wandle - Letters and Sounds Reception Phonics Home Learning



Phase 2 - Autumn 1 Week 1  
Focus - Phonemes s / a / t / p

Please support your child to practise and reinforce the phonemes and graphemes we are learning in school. More information and support can be found on the Little Wandle website - <https://www.littlewandlelettersandsounds.org.uk/resources-for-parents/>

### Phonemes we will be focusing on this week in school -

S

Pronunciation Phrase - s  
Show your teeth and let  
the s hiss out ssss

a

Pronunciation Phrase - a  
Open your mouth wide  
and make the a sound at  
the back of your mouth a  
a

t

Pronunciation Phrase - t  
Open your lips; put the tip  
of your tongue behind  
your teeth and press t t t

p

Pronunciation Phrase - p  
Bring your lips together,  
push them open and say p  
p

We will be orally blending words. Can you hear the phonemes in these words? Can you listen and then repeat the word?

s - a - t

t - a - p

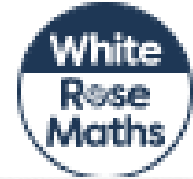
s - a - p

p - a - t

a - t



# Maths



## Yearly overview

The yearly overview provides suggested timings for each block of learning, which can be adapted to suit different term dates or other requirements.

	Week 1	Week 2	Week 3	Week 4	Week 5	Week 6	Week 7	Week 8	Week 9	Week 10	Week 11	Week 12
Autumn	Number Place value (within 10)					Number Addition and subtraction (within 10)					Geometry Shape	Consolidation
Spring	Number Place value (within 20)		Number Addition and subtraction (within 20)			Number Place value (within 50)		Measurement Length and height		Measurement Mass and volume		
Summer	Number Multiplication and division		Number Fractions		Geometry Position and direction	Number Place value (within 100)		Measurement Money	Measurement Time		Consolidation	

Concrete -  
Pictorial -  
Abstract

Practical  
and  
outdoors

# Writing

The Jane Considine scheme  
'The Write Stuff'

Daily lessons that build  
independence  
through  
structure  
and support





# Our Wider Curriculum

Our foundation subjects will take place this year as block weeks.

---

For this week and next week, our subject focus is history, and our topic for this is Toys Past and Present.

Other subject focus weeks we have coming up are: science, DT, art, RE and geography.

PSHE runs as a single taught lesson each week.

# Homework

Our homework in year 1 is on Doodle maths and Doodle Spell.

---

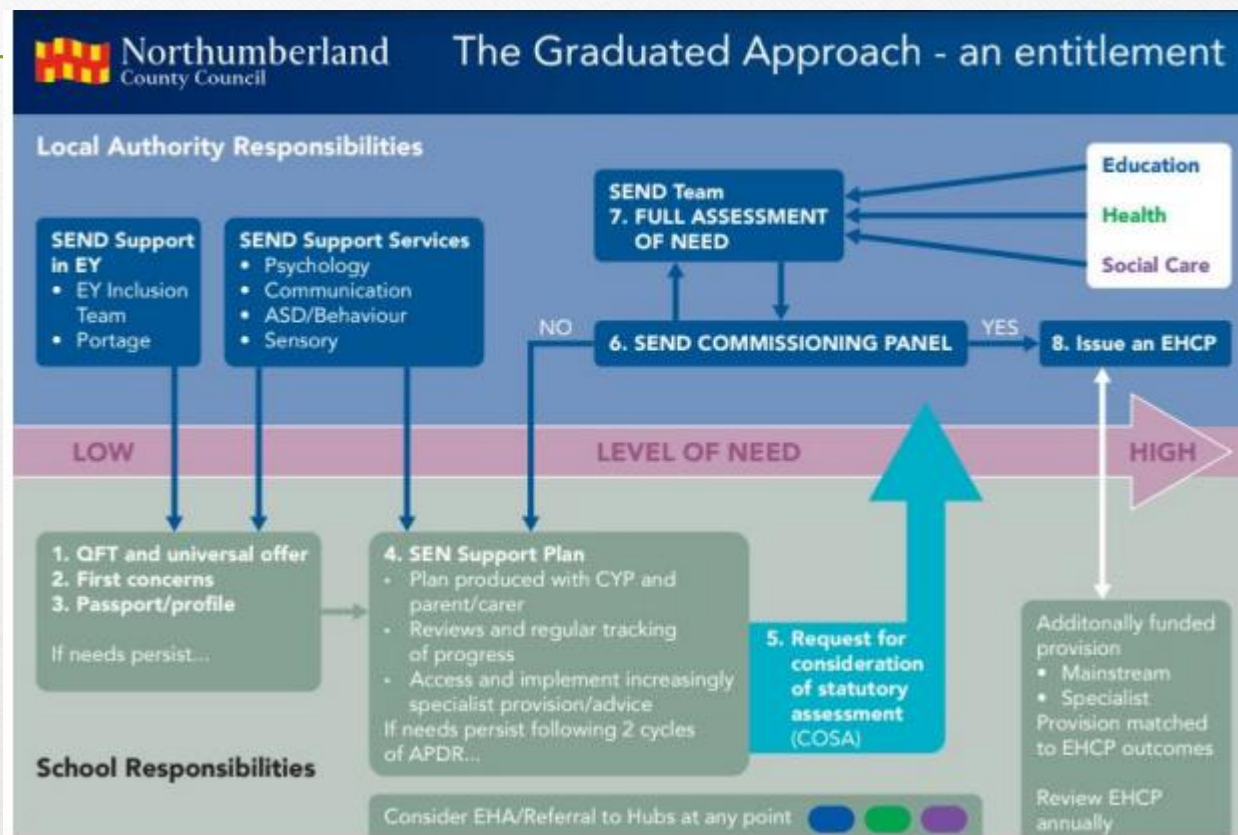
Here is our class code if you need it: 43CPAK

The goal for children is to remain in the green zone. Children each and stay in this zone by completing Doodle little and often - the recommended time is 10 minutes per day but do as you see fit!



# Special Educational needs

- *Graduated Response - Class teacher is your first point of contact.....*



# Partnership

- New behaviour policy - sent alongside the newsletter last week
- Zones of Regulation





# Working Together

- Further develop links
- Opportunities for parents to support through our PTA, coming into school, specific knowledge that could support us.
- Let us know.... If you have any concerns please talk to us.