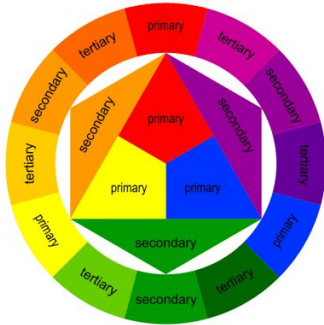


Art Glossary

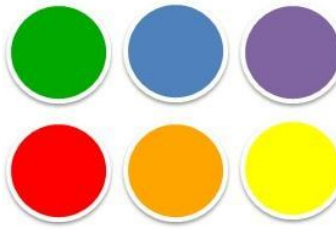
AHS VALUES in Art



Colour

Colour is arranged into groups
Primary - 3 colours that cannot be mixed. Red, Blue and Yellow
Secondary - a mix of two primaries
 eg blue and yellow = green.
 Colour is used by artists to show realism and mood/atmosphere.

Cool Colours



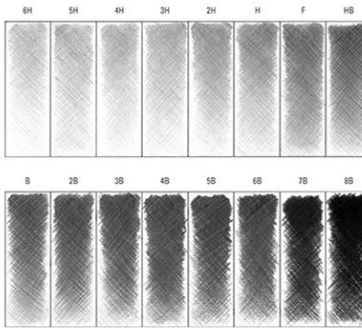
Warm Colours

Confidence

Confidently apply your knowledge & understanding to develop artwork

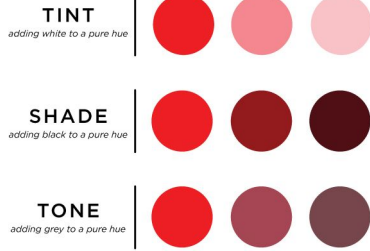
Tone

Lines are used to describe shapes and objects. Linear marks can be made with pencil, paint, chalk etc and are arranged into a drawing or image. The quality, type, thickness of line can vary enormously



Respect

Respect the classroom and use equipment safely.

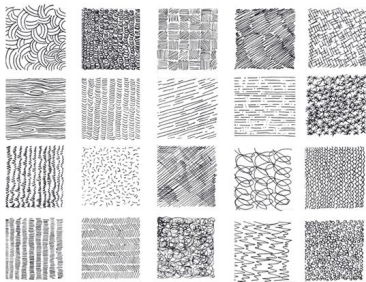


Line

Lines are used to describe shapes and objects. Linear marks can be made with pencil, paint, chalk etc and are arranged into a drawing or image. The quality, type, thickness of line can vary enormously

Types of Mark Making

Circular – Draw small circular strokes using a light pressure.
Cross hatching – Draw close parallel lines. Change the rotation of the lines with each layer.
Stippling – Varying the length of the pencil stroke creates a variety of textures.



MARK MAKING IDEAS

Engagement

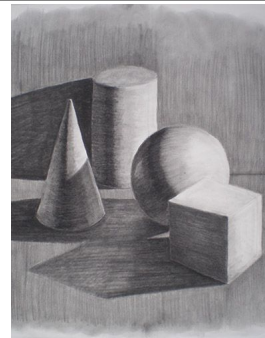
Engage yourself in the lesson, answering questions, performing as best you can

Composition

The arrangement of the parts of a work of art.

Shape

Lines when joined create a shape. These can be regular or irregular eg. squares or circles. These are examples of flat 2D shapes. Cubes and spheres are examples of 3D shapes or forms



Design

a plan or drawing produced to show the look and function or working out. It can also be used to describe a decorative pattern

Aspiration

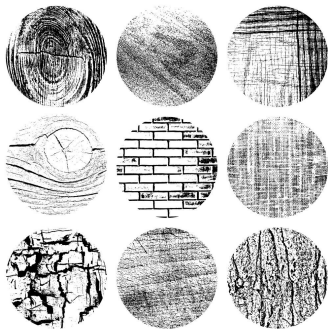
Aspire to be your best, be inspired by others, be consistent, be resilient

Texture

This is the surface qualities of an object or how they feel to touch. Artists use materials to make 2D surfaces surfaces appear textured

Art Movements and Styles

Cubism	Installation
Fauvism	Sculptural
Pop Art	Illustrative
Realism	Modern Art
Expressionism	Contemporary
Impressionism	Surrealism
Folk Art	Figurative
Abstract	Minimalist
Conceptual	Portraiture



Teamwork

Work with your peers, offer support, develop ideas by sharing

Media

Media is what an artist may use to create art. There is dry media such as **Pens, Pencils, Pastels, Colouring Pencils, Chalk and Charcoal.** There is also wet media for example **Acrylic paint, watercolours, ink, printing.** 3D Media includes **Clay, ModRoc, Paper Mache, Wire and Willow sculpture**

Pattern

Pattern is the arrangement of lines, shapes and colours to create a repetitive design. Pattern is used in all aspects of Art, Craft and Design



Enjoyment

By having a positive mindset and giving 100% you will enjoy the lesson more and produce a better standard of work.