



# BROOKVALE GROBY LEARNING CAMPUS

Valuing Everyone, Achieving Excellence

Will Teece, Headteacher

Telephone: 0116 287 9921

Website: [www.brookvalegroby.com](http://www.brookvalegroby.com)

## Parent Information Evening Monday 30<sup>th</sup> June 2025

Parents/Carers are invited to an information evening on Monday 30<sup>th</sup> June 2025. As our hall is unable to hold all parents/carers in one sitting, the sessions will be split 5.30-6.15pm student surnames A -L, 6.30-7.15pm student surnames M - Z. This same evening, we will also have clear "exams style" pencil cases available to purchase for £2 cash. Each contains a 12cm ruler, a protractor, compass, pencil, pencil sharpener, rubber, purple biro, two black biros and a whiteboard pen. A letter will be emailed out separately with more details.

## Learning Camp 2025 – Wednesday 2<sup>nd</sup> and Thursday 3<sup>rd</sup> July

### A Guide for Parents/Carers/Students

#### Introduction

The Learning Camp is the name that we give to our Year 6 Welcome Days, and has been designed to support each child through the transition from Primary to Secondary education. When the year 6 students visit, students in year 7, 8, 9, 10 and 12 will also be on campus (approx. 1000 students).



## What to wear?

We are aiming for all our new students to make friends from other primary schools during these days, so please no primary school uniform. Instead, please send your child in practical clothing such as jeans, T-shirt, jumper or sweatshirt and flat shoes or trainers but no revealing clothes or high heel shoes.



## What to bring?

Students are asked to bring a bag, containing a pen, pencil, ruler and a filled water bottle. Students are welcome to bring a packed lunch but can also purchase food from our servery (see Catering arrangements on page 4). Students do not need to bring their PE kit.



If students have plug in headphones, could they bring them in please to assist with an online Science test they will be asked to take. (If they do not have any, then do not worry, they will be provided by us).

Students may bring their mobile phone, however, it should not be used under any circumstances during the day and should be switched off between 8.35 and 3.05pm.

## How to get to BGLC campus?

Where possible, we encourage students to walk, but we understand that Parents/Carers may wish to accompany them on their first visit. If travelling by car, please note that **no vehicles are allowed on campus** (other than for students with a disability). Parking on the road outside campus can get very congested so please be considerate to other road users.



Please note that **school buses will not be available for Learning Camp days.**

## What to do on arrival?

Please arrive by 8.35, 8.40 at the latest. Staff will be outside the Reception area to greet students. As they arrive, students will be directed to our Hall so there is no need for parents/carers to remain on site with their child.

Students will leave campus at 3.05pm each day, and again, **Parents/Carers may walk onto campus on Learning Camp days to meet them, but no vehicle access will be permitted.**





If, for any reason, a student is not able to attend the Learning Camps Day, please notify us in advance by emailing [Reception@brookvalegroby.com](mailto:Reception@brookvalegroby.com) If they are ill on the day, please phone by 9am to let us know T. 0116 2879921 or email [Attendance@brookvalegroby.com](mailto:Attendance@brookvalegroby.com)

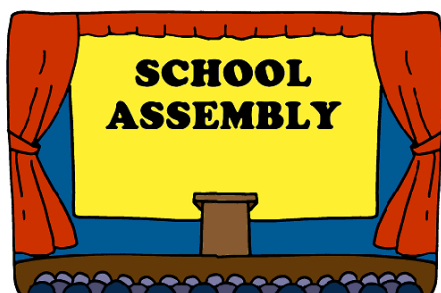
We have informed all primary schools about our Learning Camp days, so there is no need for Parents/Carers to notify the primary school that their child will be at BGLC on Wednesday 2<sup>nd</sup> and Thursday 3<sup>rd</sup> July.

## What will happen during the two days?

Students will be guided to the Sports Hall to congregate and be welcomed by Mr Teece, Headteacher. They will then disperse, accompanied by their tutor, to go to their tutor room. The tutor will provide lots of information to the students and start the process of getting to know all the students in their group.



All students will be issued with an ID card and lanyard for identification purposes, which will be collected at the end of the 2 days and kept safe for the start of the new term.



There will be taster lessons as well as lessons based on our motto of 'Work Hard, Be Kind'. Our aim is to introduce your child to our learning and social expectations here at Brookvale Groby in order that they feel confident and ready to learn for the start of Year 7. Students will be asked to do an online Science test (for which headphones are required). These are called GL assessments.

At the end of the 2 days there will be an assembly to round off proceedings and say farewells.

## Concerns/Worries

If a student has any concerns during the two days... gets lost /is upset /feels overwhelmed ..... please be assured that there will be plenty of support and staff available to assist the students.



## Allocation to Tutor Groups and Classes



**Tutor Group allocations will be notified to students during the Learning Camp, and will be emailed to you in a separate communication.**

The tutor group for each student is not something we will change unless there are very exceptional circumstances.

We appreciate that moving to secondary school is a big deal for many and students might want to be in a group with all friends from primary school. This simply isn't possible, when there are 255 students in the year group and 9 tutor groups.

We have, therefore, allocated students in a way that is fair for all so that each tutor has some students from each feeder school in it, so students will at least see some familiar faces, even if they are not necessarily best friends. Through many years of experience, we know that students soon settle into their group, indeed, they often make new long-term friendships as a result of the interactions with students from other schools.

**We ask that no tutor group changes are requested** until the students have **been to campus in August** and **had the opportunity to meet other students** in their group and get to know how secondary school works.

**COHORT:** This is the term we use for teaching groups. The year group is split into 3 sub-groups - X, Y, Z. For many subjects, this group will be the same as the tutor group. For a few subjects – Languages, Art and Design, Performing Arts students will be put into a smaller group and may be in classes with other students, not in their tutor group.

## The “Best of Me”

Included with the tutor group notification, (due to be issued later in June) students will be invited to send a message to their tutor, telling them 6 interesting things about themselves so the tutor can get to know each child in their group a little better.

## Parent/Carer access to BGLC Systems

At BGLC we use an online system, **called Arbor**, to give Parents/Carers access to their child's data, as well as a provision to make payments such as school shop items, to book onto trips and to add credit for cashless catering purchases. Payments are made online using a debit/credit card. **Parents/Carers should have received a login, so please set up your account and add funds for any catering expenses incurred during Learning Camp and also to add funds ready for the start of the new school year.**



## Catering arrangements

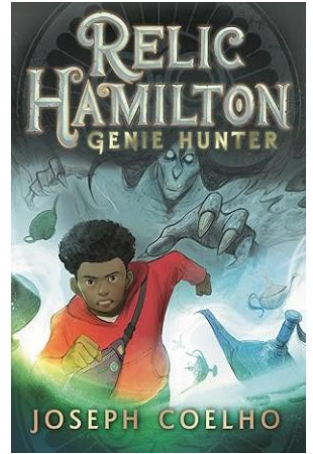


Students **will be able to access our cashless catering facilities** during Learning Camp at break and lunchtime. To make and record purchases, students will swipe their ID card on the till system. This card will be activated ready for them to use. **Parents/Carers should add credit to their child's Arbor account before Learning Camp if you wish items to be purchased.** However, students without credit will not be refused food, although their choices will be limited, and any debt will transfer to their Autumn term balance. Students may, of course, bring a packed lunch if that is your preference.

## Summer Book Club

We know that reading for pleasure is a key to success in secondary school. It helps students to progress in all of their subjects and it also supports their wellbeing. To help the new Year 7s get off to a good start, we are taking part in a Summer Book Club.

We will be reading **“Relic Hamilton” - Genie Hunter by Joseph Coelho**. Students will be gifted an eBook copy of the book. An email will be sent with a redemption link around the beginning of July, enabling the download of the book.



## Uniform News (see our website page for more details)



**LATE NIGHT OPENING** - Monday 7<sup>th</sup> to Thursday 10<sup>th</sup> July 2025, until 8pm. Also open on Sundays during the summer holidays from 6<sup>th</sup> July to 24<sup>th</sup> August, 11am to 4pm.

Store Address: 54-56 Humberstone Gate Leicester, LE1 3PJ\* Tel: 0116 2511844

Open 9am to 5pm Monday to Saturday, plus the additional dates/times above (\*The Uniform Direct

shop should not be confused with another uniform supplier located on the corner of Charles Street, which does not stock our uniform.)

## Second-Hand Uniform

We have a limited number of pre-loved items, knitwear and PE tops with logos. You are welcome to email Reception to enquire about the availability of specific items and sizes.

## Ties

During Term Time the only new items of uniform held on Campus are ties (£6 each available to order, subject to availability, via Arbor School Shop).

## Transport to Campus 2025-26

A separate letter has been sent by email regarding our campus transport services. This outlines the routes and payment options available and details of how to book a place.

If you think you may be eligible for funded transport, please ensure you have contacted your local authority and emailed [transport@brookvalegroby.com](mailto:transport@brookvalegroby.com) :

- **Leicestershire County** - <https://www.leicestershire.gov.uk/education-and-children/school-transport> or call the department on 0116 305 0002
- **Leicester City** - <https://www.leicester.gov.uk/schools-and-learning/school-and-colleges/transport-to-school-and-college/>

# First Day of Term 2025-26

Students start Year 7 on Friday 29<sup>th</sup> August.

Please note this date may differ to dates shared previously.



On the first day, students should arrive by 8.40am and go straight to their Tutor Room. Students will not require their PE kit with them on the first day of term.

If for any reason they are unable to attend please let us know by 9.30 am at the latest by either:

- emailing [Attendance@brookvalegroby.com](mailto:Attendance@brookvalegroby.com) or
- T: 0116 287 9921, option 1, then leave a voicemail.

If a student is absent, and we have not received a notification from a parent, **an email message notification** will be sent to Parents/Carers. Please ensure your email address on Arbor is correct.

## Queries

If you have a query about any aspects of the arrangements for Learning Camp, please contact Reception, [Reception@brookvalegroby.com](mailto:Reception@brookvalegroby.com) or T: 0116 287 9921

Other useful contacts are as follows:

- Mrs Rumming, Head of Year [trumming@brookvalegroby.com](mailto:trumming@brookvalegroby.com) T: 0116 281 7016
- Mrs Tointon, SENDCo [mtointon@brookvalegroby.com](mailto:mtointon@brookvalegroby.com) T: 0116 281 7054
- Mrs Hardy, Office Manager [ahardy@brookvalegroby.com](mailto:ahardy@brookvalegroby.com) T: 0116 281 7001
- Campus Transport [transport@brookvalegroby.com](mailto:transport@brookvalegroby.com)

WE LOOK FORWARD TO WELCOMING YOU TO BGLC  
SEE YOU ALL VERY SOON