



EVERY DAY COUNTS



Why is attendance important to my child's education?

Did you know?

90%

of young people with attendance **BELOW**

85%

fail to get good grades.

MISSING **1** DAY A WEEK



LOSING **ONE YEAR** OF SCHOOL LIFE.

Good attendance means:

Being in school at least **97%** of the time, that's at least **184** days a year.

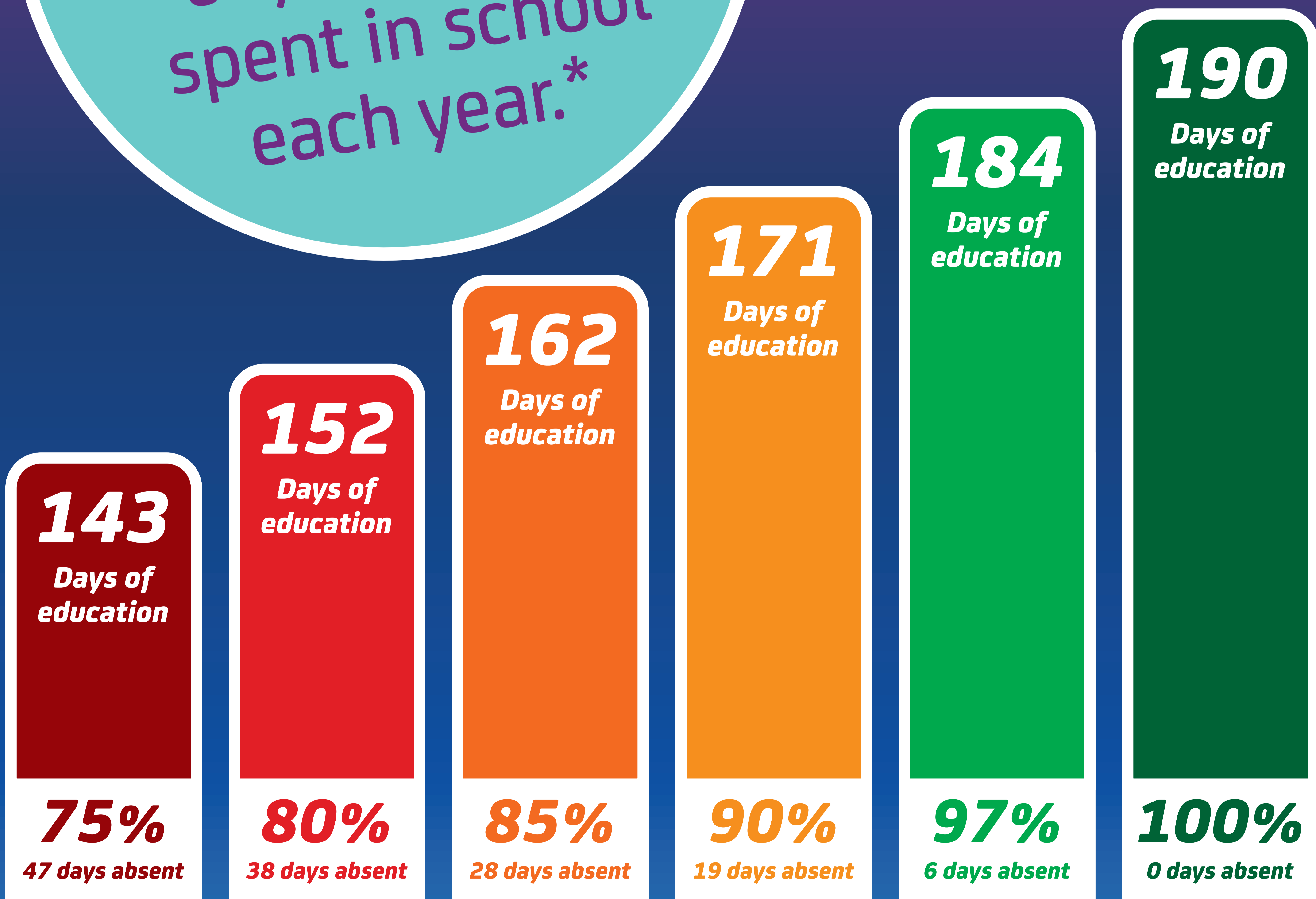
Target **97%+**



175

days are **NOT** spent in school each year.*

* Plenty of time for shopping, holidays & appointments.



SERIOUSLY WORRIED

Very poor attendance has a serious impact & reduces life chances.

VERY CONCERNED

Poor attendance gives less chance of success.

WELL DONE

Good attendance gives the best chance of success.