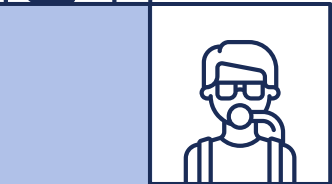
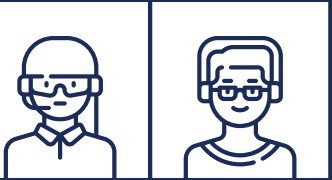




# Work experience

1st-5th July 2024





# Session OBJECTIVES

**01** Why go on work experience?

**02** Using Unifrog

**03** What next?





# Why go on work experience?



—Albert Einstein



# Why?

You'll get the chance to find out:

- How companies and organisations operate.
- What kinds of job roles are available to you.
- How to behave in a professional environment.
- More about your own strengths, values, motivations, and interests.
- Which elements of work you'd like to rule out — which is just as valuable as knowing what you do like doing!



# Why?

You'll also develop some of your 'soft skills', like:

- Communication
- Teamworking
- Problem solving
- Accountability
- Learning
- Resilience / adaptability (the ability to 'bounce back' or adapt when things don't go to plan)
- Whatever job you try, you'll gain useful skills and experience, and learn more about yourself and working life.

ABILITIES

SUCCESS

SKILLS

PROGRESS

ADVANCED

PROFESSIONAL

GROWTH



TIME

STUDY

ATTITUDE

CAREER

GROWTH

PROGRESS

TRAINING

MOTIVATION

LEARNING

IMPROVEMENT

CAREER

STUDY

SUCCESS

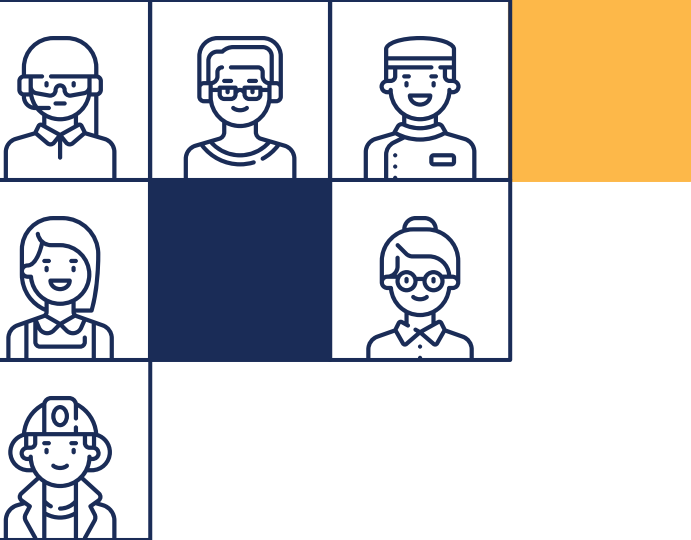
GROWTH

BUILD

DEVELOPMENT

KNOWLEDGE

COMPETENCE



02

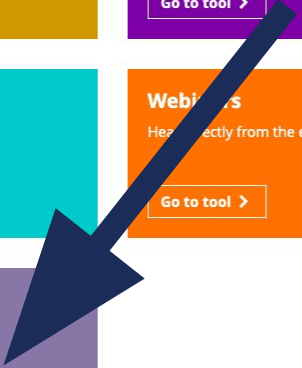
# Using Unifrog







**Go to tool >**



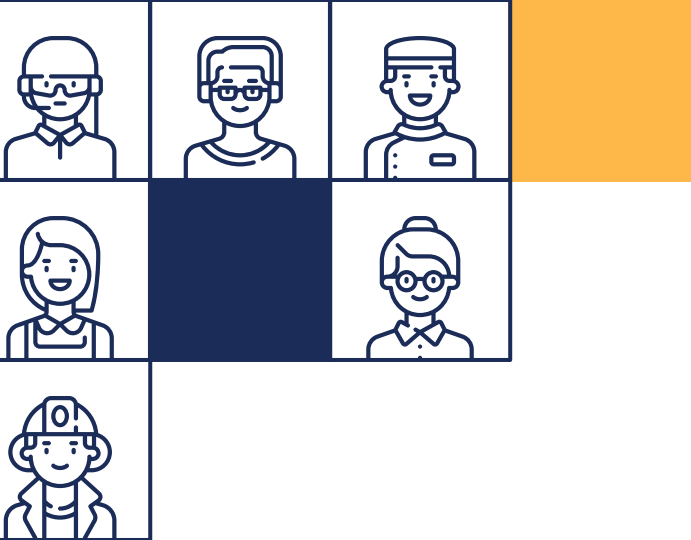


**<https://www.unifrog.org/student/know-how/direct/how-to-use-the-placements-tool>**

# The placements tool makes it easy:

- For students to get the ball rolling, then reflect on the placement afterwards;
- For the employer to follow and confirm that they follow best practices in:
  - Safeguarding;
  - Health and safety;
  - Covid safety guidelines;
  - Risk Assessment;
  - Insurance;
  - GDPR;
- For the parent / guardian to stay informed of what's happening;
- For teachers to have an overview of the whole process, including knowing at any time the status of each student's placement.





03

What next?



# Your tasks



**Research**



**Shortlist**



**Make contact**





**£10 admin fee**



# Timeline

**October**

Start your research,  
find a placement



**22nd March**

Deadline for  
employers to provide  
relevant documents



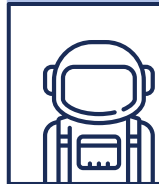
**22nd December**

Deadline to secure a  
placement



**1st – 5th July**

Attend work  
experience





# While you are there

unifrog

Digital workbook 'Preparing to go on work experience'

## WORK EXPERIENCE JOURNAL

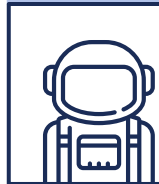
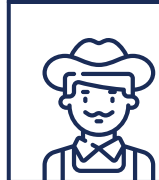
This journal will help you plan and track your work experience. You'll need to fill in some sections before, during and after your work experience.

### A) COMPLETE BEFORE PLACEMENT

#### 1. Work experience profile

Complete the following sections:

<b>Dates of experience:</b>	
Start date:	End date:
<b>Working hours:</b>	
From:	To:
<b>Lunchtime arrangements</b> (e.g. packed lunch, provided by work, buying lunch yourself)	







# Unifrog resources

Filling in the form  
- video -

Student guide

How to get ready



**Questions?**



# EMPLOYERS THAT SUPPORT WORK EXPERIENCE



UNIVERSITY OF  
LEICESTER



Mercedes-Benz



Premier Inn

ageUK

Love later life

