



Guide to the Careers Programme Autumn 2021

Hayley Dymond, Campus Careers Advisor

Office next to G43 near The Hub, right hand side of the doors to Post-16

Introduction

In this PowerPoint I will be covering:

- Key events happening this term
- Local Open Days/Evenings information
- What are your Post-16 Options?
- Careers Lessons
- Details on Morrisby
- Introduction to Positive Steps @16 application portal
- Reminder of our Careers Evening



Key Areas



Open Days/Evenings

Open days/evenings are on throughout the whole of November and December across the whole of Leicestershire. Check individual college websites for further details about these and to book.

Careers Lessons

Through this term you will have lessons on career planning. These will involve a number of activities around researching opportunities, learning practical skills about how to fill in applications and how to create a working CV. As well as learning how to use and apply for your Post-16 options through Positive Steps @16.

You will also have a practice interview on either Wednesday 3rd or Friday 5th November with a real employer.



Towards the end of term you will have to apply for courses at your preferred college(s) through Positive Steps @16. Although the overall deadline for applications is the 31st Jan 2021, many colleges chose to set an earlier deadline.

Our Post-16 deadline is Wednesday 15th December

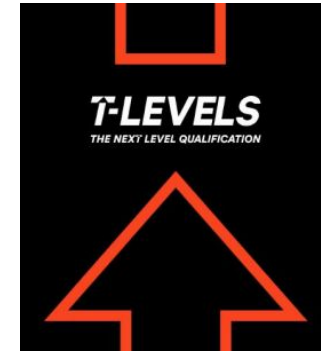
Open Days/Evenings



- Brookvale Groby Post-16 - Thursday 11th November
- Brooksby Melton College
 - Brooksby Campus - Saturday 6th November
 - Melton Campus - Saturday 30th October
- Leicester College
 - Abbey Road/Freeman's Park/St Margaret's Campuses - Saturday 27th November
 - T-Level Open Event - Tuesday 26th October
- Loughborough College - Saturday 6th November
- Stephenson College
 - Coalville Campus - Saturday 13th November
- Beauchamp City Sixth Form - Saturday 6th November
- WQE - Saturday 13th November
- Gateway College - Saturday 6th November
- North Warwickshire and South Leicestershire College - Monday 22nd November
- Bradgate Sixth Form - Thursday 28th October



Post-16 Options



A-Levels

- An A-level is a two year course
- You pick individual subjects
- You can study three or four at one time or fewer with a BTEC

BTEC / Vocational Courses

- Practical based, vocational qualifications
- Gain hands-on experience in the field or in a classroom
- Can be 1 or 2 years depending on level of course
- Your course could start at Level 1 or Level 2 (equivalent to GCSE) or Level 3 (equivalent to A-level)
- BTEC are usually tailored to a sector where as Vocational courses tend to be tailored to one career

T-Levels

- 2 year L3 qualification for 16-18 year olds, equivalent to 3 A-Levels
- Designed to teach the skills that industry needs
- 80 percent in college gaining industry specific skills and knowledge
- 20 percent on the job (industry placement) relevant to chosen course
- Relevant English, maths and digital skills



Apprenticeships

- You have to find an employer - but training providers may help
- The entry requirements vary depending on the type of apprenticeship
- Selection process will involve interviews and sometimes tests
- Your training can start at Level 2 (equivalent to GCSE) or Level 3 (equivalent to A-level)
- Apprenticeships advertised on <https://www.gov.uk/apply-apprenticeship> as well as through local press, job and college websites
- Don't be afraid to write to companies directly (especially smaller, local firms)

Digital
Construction
Education and Childcare
Health and Science

Careers Lessons

- Writing a CV
- Preparing for Interviews
- Using online research resources
- PS16 Applications
- Application Letters

Practice Interviews

Wed 3rd Nov
Fri 5th Nov

Be Prepared

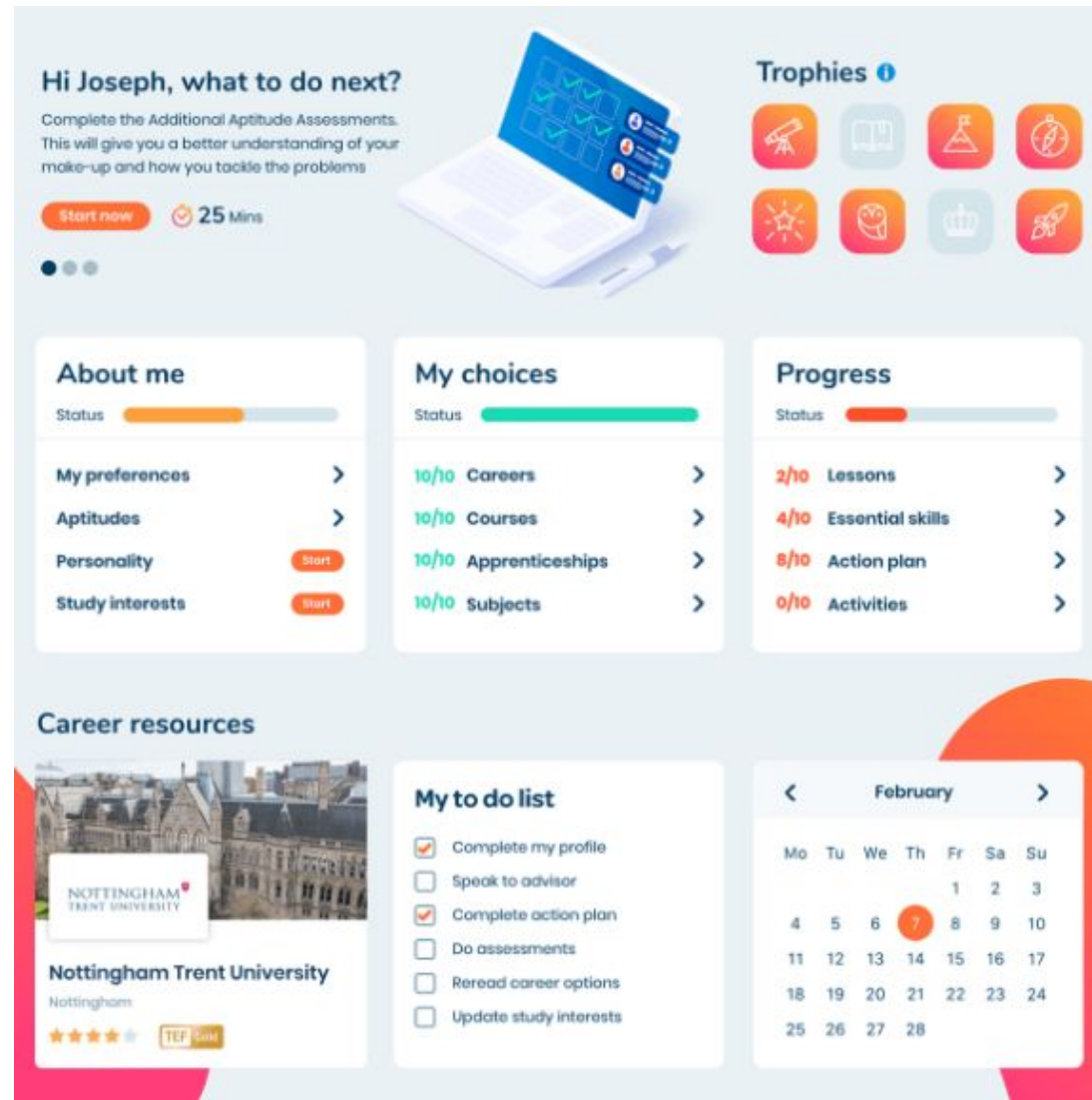




We have chosen Morrisby to provide you with an online careers guidance programme which is accessible from school and home.

Morrisby helps you along a journey of self-discovery that makes careers guidance enjoyable, fun and worthwhile. Their interactive app provides personalised advice to help you make informed decisions about study pathways and career opportunities.

To access this resource visit: <https://www.morrisby.com/>, click on sign up, use the Code: MC695Q99 and enter your student details.



Planting Futures

We're planting one tree for everyone who completes a Morrisby Profile.

We've planted **67,146** trees out of our goal for 2021 of **87,600**





Positive Steps into Education, Employment or Training



Search



Jobs
Full or part-time jobs >

Search



Full Time Courses
Vocational and academic >

Search




Apprenticeships
Own your future

Course name or subject

Full Time Courses

Search



Discover new exciting features

We're adding new stuff all the time. Why not sign up for free and give it a go?


[Find out more](#)



Help & Guidance

We can help you prepare and to make choices about your future.

[Learn More](#)



Upcoming Events

Keep up-to-date with the latest activities and events near you.

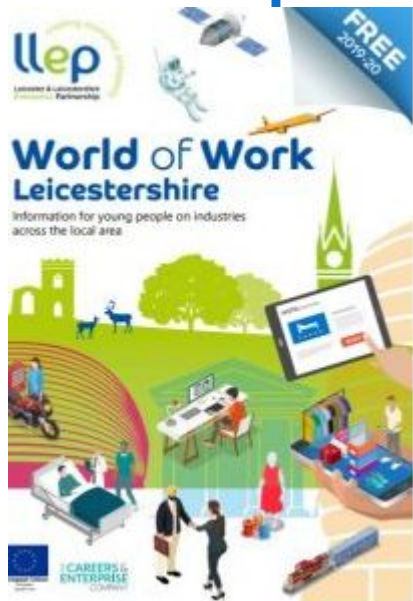
[Take a look](#)

Site to find colleges/further education establishments in your area that offer the course(s) you are thinking of studying

Site for making online applications to any college or further education establishment for Post-16 education

You will get your log in details in your Careers Life Skills Lessons

Online Support at



Where can my subjects take me?

My Learning My Future: English

Where can English take you?

ENGLISH
WE'VE GOT THE APPRENTICESHIP FOR YOU

English
ENGLISH

My Learning My Future: Art & Design

Art & Design

My Learning My Future: Art & Design



Investigative

Develop a way to better predict the weather



Animal care services occupations n.e.c.	
Weekly Pay £380	Annual Pay £19,760
Hours/Week 39h	Hourly Pay £10
Workforce Change (projected)	
Growth 13.4%	Replacement 57.9%
The workforce is projected to grow by 13.4% over the period to 2027, creating 9,900 jobs. In the same period, 57.9% of the workforce is projected to retire, creating 42,900 job openings.	
You might find this job in Agriculture, etc Veterinary Sport & recreation Education Libraries, etc	
More info	Clear card

Labour Market Information (LMI)

Key facts about Leicester and Leicestershire:

- There are 490,000 jobs
- Across 42,000 businesses
- Over 99% of these businesses are SME
 - Micro – 0-9 employees
 - Small – 10-49 employees
 - Medium – 50-249 employees
 - Large – 250+ employees

But we also have some great and well-known large businesses based here such as IBM, Amazon, Next, Caterpillar, Dunelm, Santander, Samworth Brothers.



Positive Steps @16



Resources for increased employability:

- Job Hunters Survival Kit
- CV Checklist
- CV Good and Bad examples
- CV Blank Template
- Employability Videos
- Interview Advice and Guidance



BBC Radio 1 - Life Hacks - Careers Toolkit - Available now



Careers Evening

The evening is about providing you and your family/carers the opportunity to explore a wide range of qualifications and options at post-16.

Date: Thursday 14th October
Venue: Brookvale Building
Time: From 6pm



Careers Evening Presentation
Venue: Brookvale Drama Studio
Times: Repeated throughout evening



ASK Apprenticeship Presentation
Venue: Brookvale New Dining Hall
Times: Repeated throughout evening



Attending:

- ✓ Brookvale Groby Post-16
- ✓ Loughborough College
- ✓ Loughborough University
- ✓ RAF
- ✓ Stephenson / Brooksby Melton Colleges (SMB)
- ✓ UCFB
- ✓ FSD Academy
- ✓ NCS (National Citizen Service)
- ✓ University of Hertfordshire
- ✓ Leicester College
- ✓ Quorn AFC
- ✓ Babington (apprenticeships)
- ✓ Severn Trent Water (apprenticeship)
- ✓ ASK Apprenticeship Service
- ✓ Gateway College
- ✓ North Warwickshire and South Leicestershire College
- ✓ De Montfort University
- ✓ Juniper Training Ltd
- ✓ Leicestershire County Council (apprenticeships)
- ✓ You!