

# Revising for Geography GCSE

How to revise



# Know what to revise

You need to know what you will be tested on and how.

For that you will need the specification, which can be found at <https://www.eduqas.co.uk/qualifications/geography/gcse-b/GCSE-Geog-B-Spec.pdf>

In the specification you will need:

**Page 2:** Summary of assessment

**Page 7-16:** Component 1 contents and what you need to know

**Page 17:** Component 2 contents

**Page 18- 20:** Component 3 - Fieldwork.

REMEMBER Flows and Mitigating risk

**Note:**  
Specification pages are the numbers printed on the top of the page. They will be different to the numbers on your screens.

	<b>AO1</b>	<b>AO2</b>	<b>AO3</b>	<b>AO4</b>	<b>Overall</b>
<b>Component 1</b>	10%	10%	10%	10%	40%
<b>Component 2</b>	5%	10%	10%	5%	30%
<b>Component 3</b>	0	5%	15% (10%)	10% (5%)	30% (15%)
<b>Overall weighting</b>	<b>15%</b>	<b>25%</b>	<b>35% (10%)</b>	<b>25% (5%)</b>	<b>100%</b>

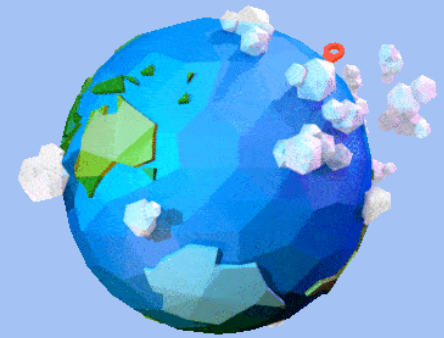
AO1 = Demonstrate knowledge of locations, places, processes, environments and different scales.

AO2 = Demonstrate geographical understanding of: concepts and how they are used in relation to places, environments and processes the inter-relationships between places, environments and processes.

AO3 = Apply knowledge and understanding to interpret, analyse and evaluate geographical information and issues and to make judgements.

AO4 = Select, adapt and use a variety of skills and techniques to investigate questions and issues and communicate findings.

# Begin Revision



Once you know what you need to do begin your revision!

**Confident  
on an area?**

**Go straight  
to exam  
questions.**

**Okay, but not  
quite there?**

**Revision  
flashcards  
Exam Questions**

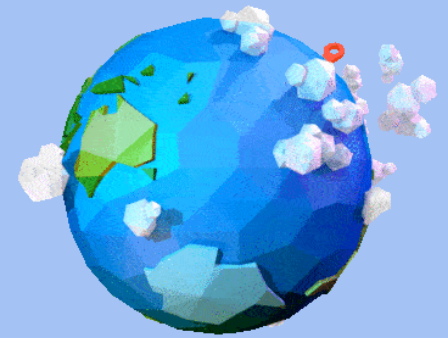
**Not confident, but can work it out?**

**Take some notes (textbook/  
revision guide/ own notes)  
Revision flashcards  
Exam Questions**

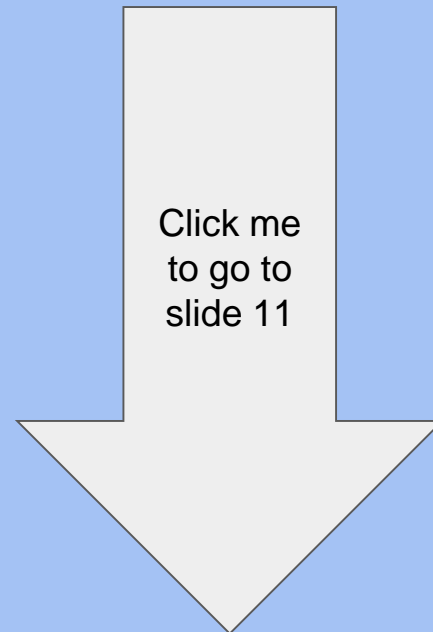
**I have no idea what to do.**

**Talk to your teacher who will help put that right.  
Then notes/ revision flashcards/ exam questions**

# Exam questions:



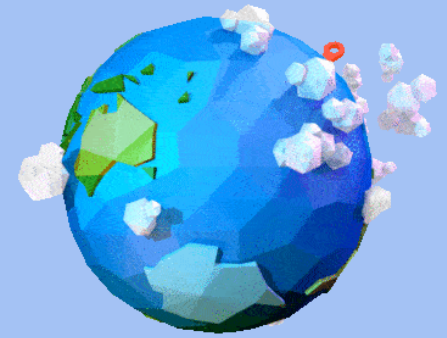
Go to slide 11 - This will link you to some exam questions



**Confident on an area?**

**Go straight to exam questions.**

# Revision flashcards



Make flashcards!

These should be as simple as possible - Answering one element per flashcard.

E.g. - **Component 1 - Rivers**

Name the **start** and **end** of a river?

**Source** and **mouth**

Okay, but not quite there?

Revision flashcards  
Exam Questions

<https://www.slideshare.net/funkygeography/revision-flash-cards-for-gcse-geography-ocr-b>

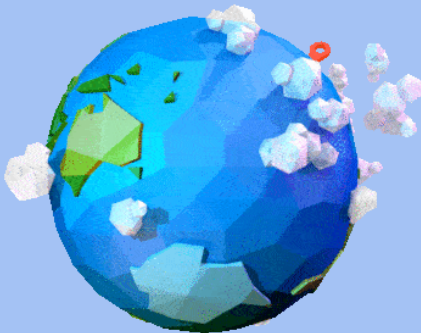
Click to help with making Geog flashcards

# Make some notes/revision materials

Re read over your class book. Use the revision guide or pocket book or knowledge organiser to make some extra notes on the topic.

Have a go at making little quizzes by using your knowledge organisers. Get parents/friends/sisters to quiz you, quiz you and quiz you again!

Create mind maps.



**Not confident, but can work it out?**

**Take some notes (textbook/  
revision guide/own notes)**

**Quizzes/mind maps**

**Revision flashcards**

**Exam Questions**

# Extended revision support

Thursday Lunchtime revision support - EVERYONE  
WELCOME.

Easter revision session for Component 3 (Tuesday 16th April  
10am-3pm).

Continue to attend classes and lessons once the exams are  
in full swing.

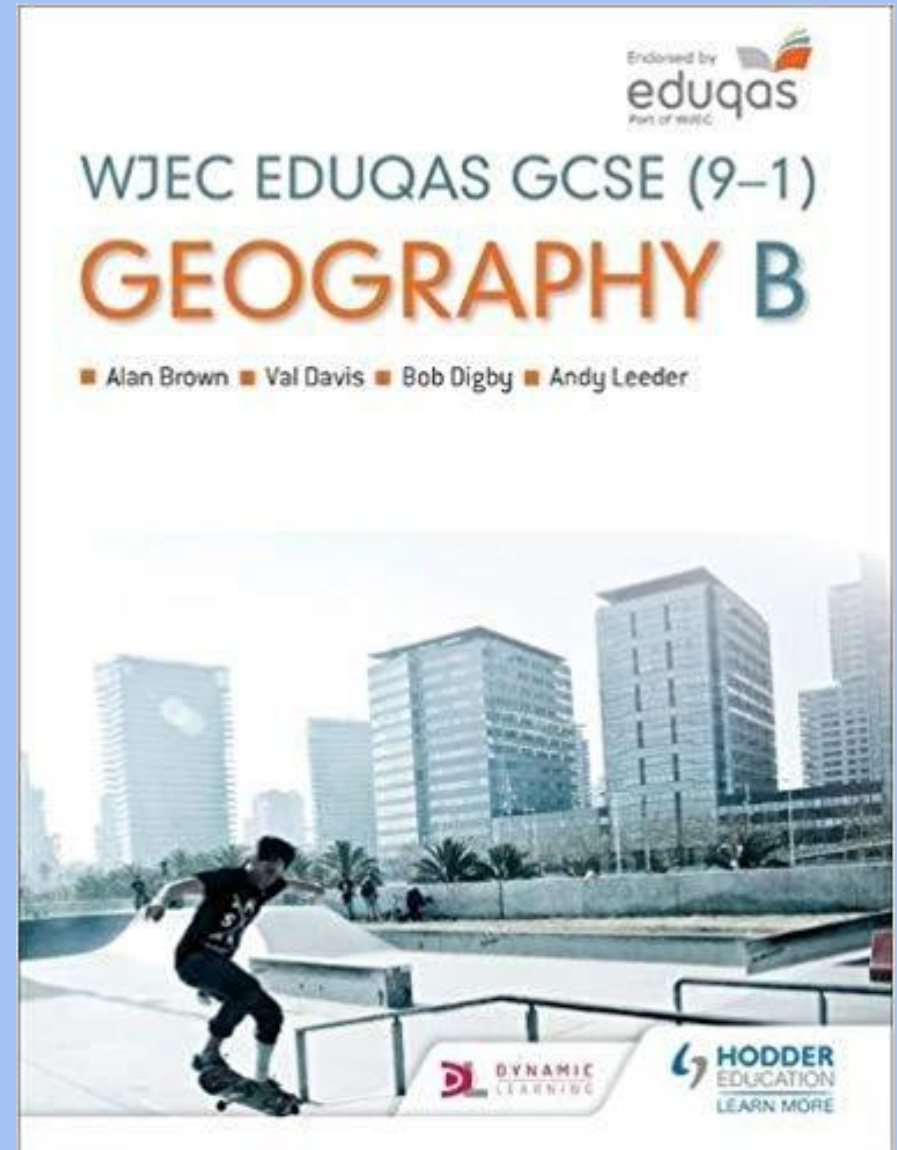
**I have no idea what to do.**

**Talk to your teacher who will help put that right.  
Then notes/ revision flashcards/ exam questions**

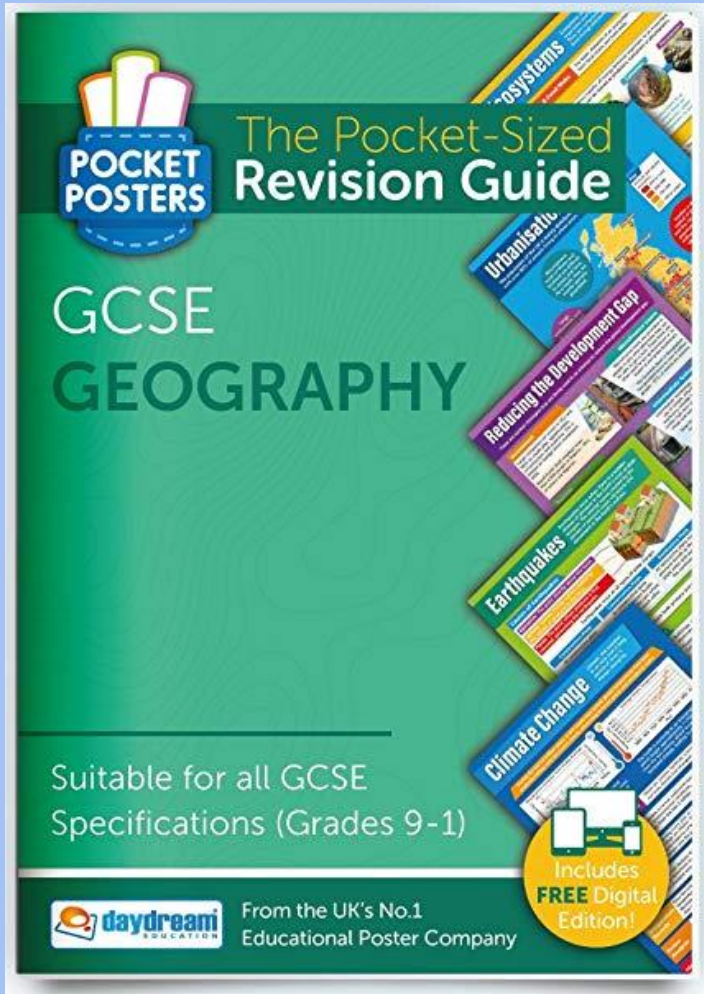


Revision guide produced by the exam board. Has short questions and answers in. Extra tasks as opposed to the practice exam questions

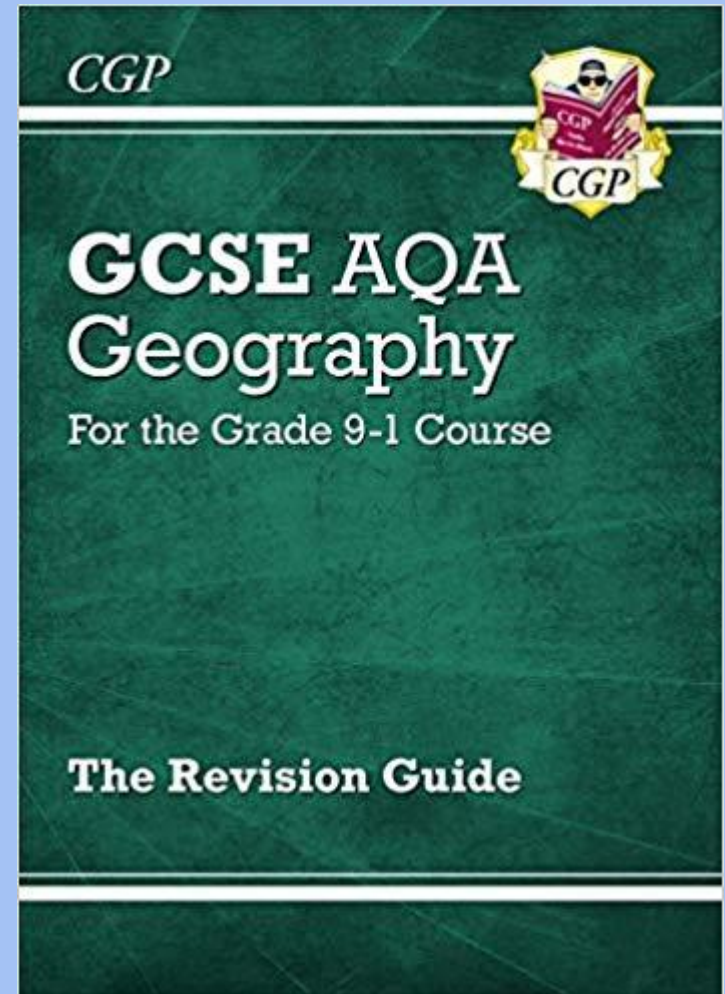
**ISBN-13:** 978-1471887376



# Both available from the school shop and VERY useful



ISBN 978-1-906248-47-5



ISBN 978 - 1 -78294 625 0

# Exam Questions

There are different places you could get exam questions.

Specimen Papers with mark schemes are available from the Eduqas website:

<https://www.eduqas.co.uk/qualifications/geography/gcse-b/GCSE-Geog-B-SAMs.pdf>

<https://www.eduqas.co.uk/qualifications/qualification-resources.html?subject=GeographyB&level=GCSE&pastpaper=true>

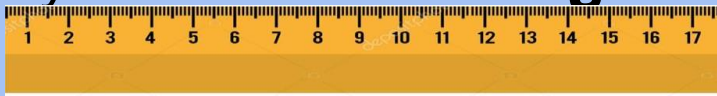
This will lead you to exam questions for each of the components accompanied by the mark schemes. Some of these we have competed in class - LOOK at those too!

# Important points to remember

Make sure your **map skills** are **strong**

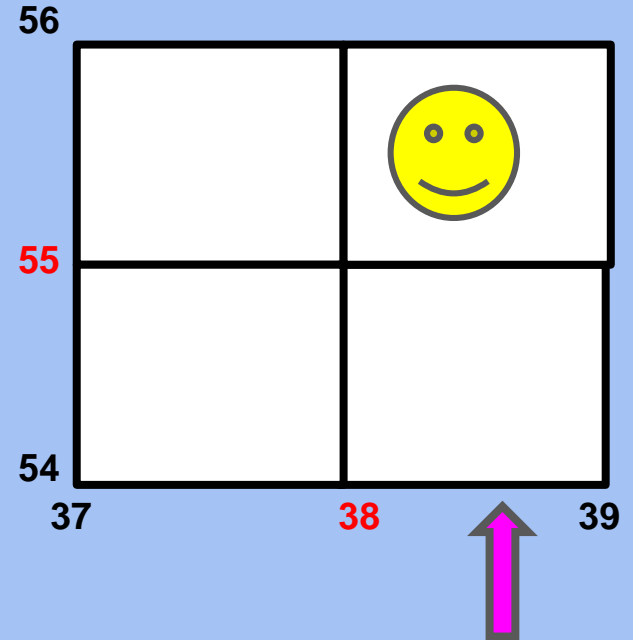
For **Ordnance Survey maps**, you need to know:

- **Eastings** increase as you move east
- **Northings** increase as you move north
- Always write the **eastings value first**.



You need to be able to work out the **distance between 2 places** on a map:

- Use a ruler to measure the distance between the places in centimetres
- Compare your measurement to the scale to get the distance in kilometres



The **four figure reference** of the smiley face is found by:

- 1) Find the **eastings** value for the left edge of the square the smiley in in - **38**
- 2) Find the **northings** value for the bottom of the edge of the square - **55**
- 3) So the reference is **3855**

# Important points to remember

## Discussing photos and Graphs:

### Picking apart pictures

- Go into **detail**, name features e.g. beaches, cliffs and arches
- Talk about **how** they are formed.
- Describe the **processes** that could be happening in the photo e.g. weathering or coastal erosion.

### Graphs

- Always **refer to the data** from the graph.
- Scatter graphs can show **+ve** and **-ve** correlation.
- A line of best fit shows a **trend**

# Important points to remember

For higher mark and longer questions, use:

**A** - Accurate knowledge (facts and figures)

**D** - Detailed understanding (make it clear that you 'get it')

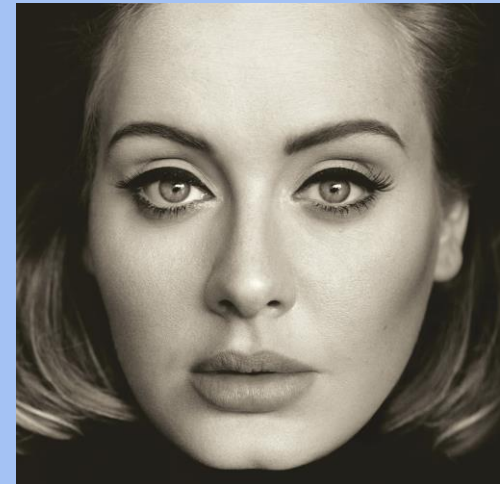
**E** - Examples (include specific, relevant examples)

**L** - Links (use conjunctions e.g. however, additionally, although...)

**E** - Evaluations (give your opinion or judgement)

**Don't forget to use the correct terminology and technical terms for processes.**

**It is important to understand what the key terms mean to use them correctly in the exam!**



# Important points to remember

Be familiar with **MATHS**.

**Mode** = **MOST** common

**Median** = **MIDDLE** value (when values are in order of size)

**Mean** = **TOTAL** of items  $\div$  **NUMBER** of items

**Range** = **DIFFERENCE** between highest and lowest

**PERCENTAGE** = (Part of sample  $\div$  Total sample)  $\times$  100

**PERCENTAGE CHANGE** = 
$$\frac{\text{Final value} - \text{original value}}{\text{original value}}$$

X100

**If in doubt give us a shout!**

**Mrs Gowdridge  
Ms Newman  
Miss Wright  
Miss Seaton**



**KEEP  
CALM  
AND  
GEOG  
ON**