

# Mill Hill Primary School

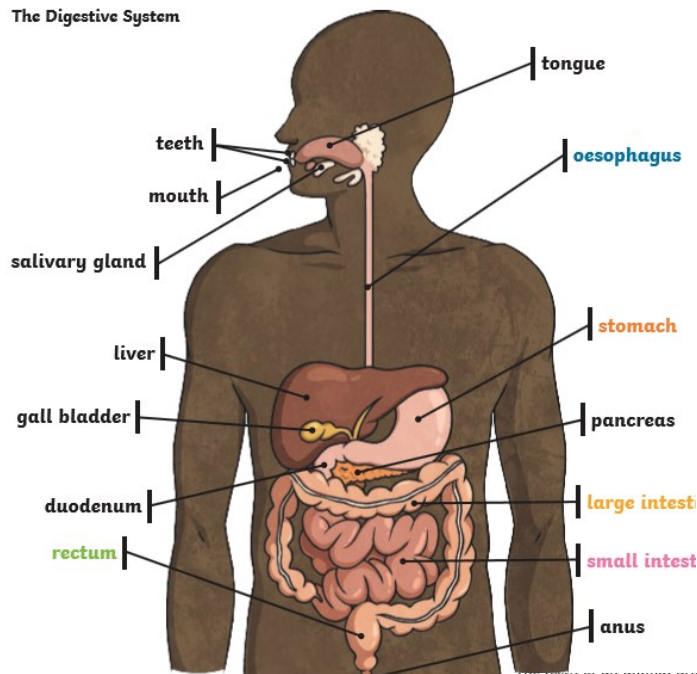
## Science Knowledge Organiser

**Overview** This topic will build your knowledge of the human body. You will look at the digestive system and label the main parts that are associated with the digestive system. You will learn about how food is broken down through mechanical and chemical processes.

You will also look at the role of the different types of teeth we have in our mouth and how to care of them, as well as exploring how teeth of animals adapt to the type of food you eat.

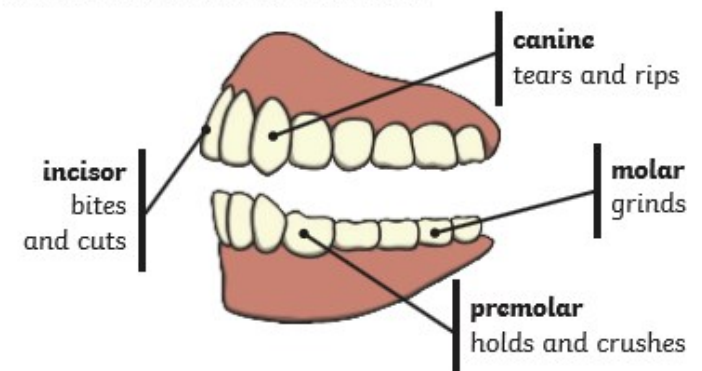
Key Vocabulary	Definition
Incisors	Cuts and snips food
Canines	Rips and tears food.
Molars/pre molars	Crushes and grinds food.
Oesophagus	A muscular tube that takes the food from the mouth to the stomach.
Stomach	In the stomach the food is churned around and broken down further mechanically. Gastric juices containing enzymes are also produced which help to break down the food.
Large intestine	Part of the intestine where water is absorbed from the remaining food. Stools are formed in the large intestine.
Small intestine	Part of the intestine where nutrients are absorbed in the body.
Rectum	Part of the body where stools are stored before leaving the body through the anus.
Digest	Break down food so it can be used by the body.

The Digestive System



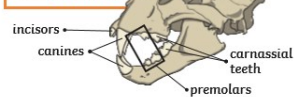
Some people have wisdom teeth but they have no function now!

Human Teeth and Their Functions

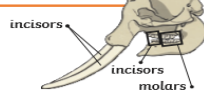


Systems provide depending on the size of the animal. Examples:

Lion - carnivore

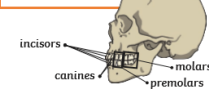


Elephant - herbivore



An Example of a Food Chain

Human - omnivore



The teeth of animal are designed to eat different foods depending on their diet.

Local links

Westmount dental

Breeze dental

To help prevent tooth decay:

- limit sugary food and drink;
- brush teeth twice daily using a fluoride toothpaste;
- visit your dentist regularly.

