



Overview - We will learn....

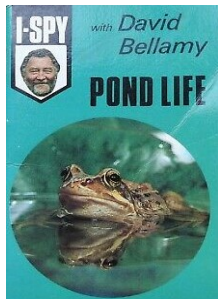
1. that **animals** including **humans**, have **offspring** that **grow into adults**. (life cycles)
2. to name and spot different **plants** and **animals** in their habitats, including micro-habitats
3. introduce processes - growth and reproduction.

Skills a super scientist will use are: researching, observing, de-

<u>Key Vocabulary</u>	<u>What does it mean?</u>
Adult	A fully grown animal or plant
Offspring	The human's or person's child or an animal's young
Life Cycle	The changes living things go through to become an adult
Develop	To grow
Habitat	A natural home or environment for a plant or animal
Adapt	How an animal or plant is best suited to living in their habitat
Camouflage	Something that blends / hides in its environment or habitat
Food Chain	A way recording data and information about how animals and plants get their food
Producer	A green plant that makes its own food
Predator	A living thing that is a hunter or killer and hunts for food to eat
Prey	A living thing that is hunted and killed for food
Frogspawn	A floating clump or cluster of jelly-like eggs
Tadpole	A polliwog or tadpole hatches from the spawn
Hind legs	Back legs of a four legged animal
Gills	They are seen on the sides of the tadpole's head and help it breathe under water
Lungs	They are like balloons and help an animal or human breathe in air.
Froglet	A froglet grows after the tadpole loses its gills and then grows lungs.

Local Links

David Bellamy was born in London in 1933 but lived and worked in Durham. He was a botanist and LOVED learning about plants and the environment. He became a TV presenter teaching everyone about nature.



Local Links

Rainton Meadows Nature Reserve

Pond dipping at Chilton Moor DH4 6PU

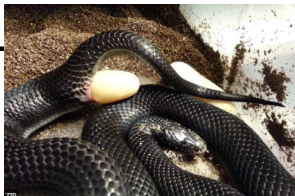
Why not visit
Durham Wildlife Trust at Houghton-le-Spring?

Some adult animals give birth to **live young** and their offspring will look like them.



Some adults have offspring that DO NOT look like them.

Some adult animals lay **eggs** that hatch into **live young**. When these eggs hatch, some look like their adult.



Can you think of any more?

