

**ST IVO SIXTH FORM**

# **PROSPECTUS**

**2026**



**LEARN, THRIVE, SUCCEED**



**ST IVO**  
**Sixth Form**  
Astrea Academy Trust  
LEARN, THRIVE, SUCCEED

## MESSAGE FROM OUR **PRINCIPAL**

Dear Students, Parents and Carers

It is my pleasure to introduce our prospectus for the St Ivo Academy Sixth Form. The core aim of the academy is to help students to achieve their very best. For those of you about to embark on post-16 study, this means helping you to achieve the highest standards in your chosen subjects and to prepare you for the next stage in your career, be it university, vocational training, apprenticeship or employment. Whatever your long-term goal, you can be assured that you are joining a sixth form with a strong and established reputation for academic success, pastoral support and opportunities beyond the classroom.

A good sixth form education is not simply about the subjects you study and the grades that you achieve, although there is no escaping their central importance. There is also a wealth of opportunities for you to get involved in the wider life of the sixth form and to develop additional skills. I have been really impressed by the leadership qualities on show in the sixth form and by the vast amount of community leadership opportunities and fund-raising work that takes place here at St Ivo. The sixth form offers many enrichment opportunities; these enable students to take part in new activities or to take part in visits locally, nationally and even internationally. It is the combination of all of these elements that makes our sixth form such a dynamic place and make us and the wider community proud.

The decision about what to study at sixth form is an important one. I am confident that the St Ivo Academy Sixth Form can offer you the range of courses, quality of teaching and enrichment opportunities to make for a stimulating and fulfilling two years which will prepare you for the next stage in your life.

**We are happy to discuss your choices with you and to show you how our sixth form operates. We look forward to welcoming you.**

**Tony Meneagh**  
Principal, St Ivo Academy







*“We are proud to serve our community with high quality education that supports students for their next steps.”*

**Our sixth form team.**  
Head of Sixth Form - Mr P Braybrook and  
Deputy Head of Sixth Form - Mrs C Webster.

OUR  
**CONTENTS**

Principal's welcome	2	A-Level Further Mathematics	35
Sixth form team	4	A-Level Geography	36
New facilities	6	A-Level German	37
Trips and visits	8	A-Level History	38
Leadership council	10	A-Level Law	39
Student experience	12	A-Level Maths	40
Clubs and societies	14	A-Level Music	41
Achievement and destinations	16	A-Level Photography	42
Support and guidance	18	A-Level Physical Education	44
Academic support	20	A-Level Physics	44
Entry requirements and application process	22	A-Level Politics	45
		A-Level Psychology	46
		A-Level Sociology	47
		A-Level Textiles and Fashion Design	48
		AS-Level EPQ	49
<b>A-Level subjects</b>		<b>Level 3 subjects</b>	
A-level Art	25	Level 3 Children's Play, Learning and Development	51
A-Level Biology	26	Level 3 Food Science and Nutrition	52
A-Level Business Studies	27	Level 3 Health and Social Care	53
A-Level Chemistry	28	Level 3 Performing Arts (dance)	54
A-Level Computer Science	29	Level 3 Sport	55
A-Level Drama and Theatre	30		
A-Level Economics	31		
A-Level English Literature	32		
A-Level Film Studies	33		
A-Level French	34		





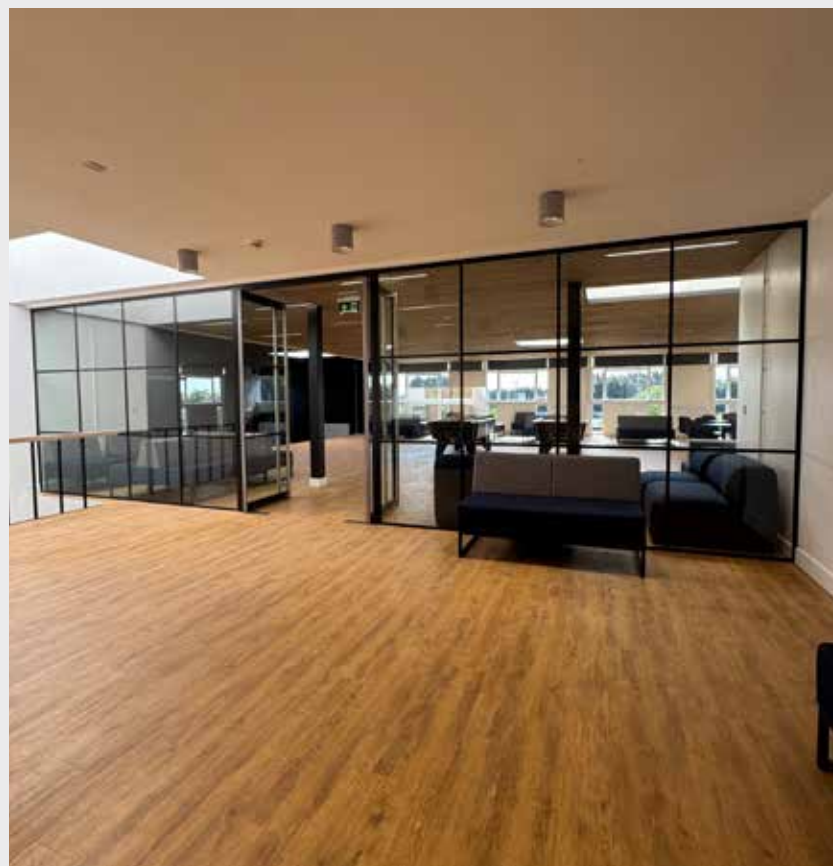
## OUR NEW FACILITIES

**Sixth form students have their own purpose-built newly refurbished sixth form centre called The Keep which is typically open from 8am-5pm daily.**

The Keep includes a common room for socialising with two pool tables, the understudy for quiet work, and two silent study rooms. Some departments across the school also have specialist sixth form rooms that are dedicated to level 3 study.

We have a brand new sixth form café which is only accessible to staff and sixth form students. The café offers a range of hot and cold drinks and food throughout the day and a welcoming informal environment to sit and socialise and work.

Sixth formers enjoy open access across all ICT suites, the resource centre, and the school canteen (which can be accessed outside of break and lunch times). We are lucky to be able to use the nearby recreation centre which offers excellent sports facilities.



"I am so excited to share these plans with students – both current and prospective ones – and their parents and carers.

Our vision is for an engaging educational space that prepares our students for their futures."

**Mr Meneagh,  
Principal**







# Our Trips and Visits

**Expanding horizons beyond the classroom: subject-specific trips that inspire, educate, and enrich.**

At our sixth form, learning goes far beyond the classroom. We offer a wide range of trips tailored to each subject, giving students the chance to experience their studies in exciting, real-world settings.

Geography students might explore the stunning landscapes of Snowdonia, history students can immerse themselves in Berlin's rich heritage, while others enjoy ski trips or visit theatre shows to bring their subjects to life.

These experiences not only enhance academic understanding but also foster cultural awareness, personal growth, and teamwork, helping students develop new skills, broaden their horizons, and create lasting memories.



*Go Ape*



**The Go Ape trip was a fun day messing around with friends, doing fun trials in the trees. We had some really funny moments in the team exercises, perfect for team bonding**

Henry,  
Year 12,  
student studying  
maths, economics  
and chemistry



**The PE trip to Cambridge University allowed us to fully immerse ourselves and explore the history of Tennis**

Maddy,  
Year 12,  
student studying  
mathematics, economics  
and physical education



## TEAM BUILDING

Our team-building trips help students develop leadership, collaboration, and problem-solving skills in a fun and supportive environment. This year we took our new year 12s to Go Ape.

## UNIVERSITY VISITS AND TALKS

Throughout the year we run a variety of events that support both research and applications, including trips to both the National Apprenticeship fair and the UCAS exhibition.

- Wadham College, University of Oxford
- Gonville & Caius College, University of Cambridge
- University of Lincoln
- University of East Anglia
- Oxford Brookes University
- Anglia Ruskin University
- University of Hertfordshire
- Form the Future – apprenticeships support



*Ski Trip*



*Snowdonia*



*Berlin*



## ST IVO'S SIXTH FORM

# LEADERSHIP COUNCIL

St Ivo's Sixth Form leadership council is a peer-appointed body of student representatives working with subject departments, the whole-school student council, house councils and the Senior Leadership Team. Our aim is to enhance student life, address issues, plan events, and represent the voices of our peers.

Each year, students apply for head student positions. Following a rigorous interview and selection process with the sixth form team and Principal, two students are appointed to chair the council. They lead a team of representatives—each encouraged to establish and lead their own committee, ensuring that a wide range of student ideas and ambitions are acted upon.



The council empowers students to shape their school environment, fostering personal growth and essential leadership skills. Through regular meetings, assemblies, and collaboration with staff, they play a key role in creating a positive and enriching community.

Charitable and whole-school events, such as Pink Day, Macmillan Coffee Morning and the annual charity day, form a central part of our work. These raise funds for important causes whilst strengthening school spirit.

House captains automatically hold a seat on the council, ensuring strong links with the House system and allowing sixth formers to act as role models for younger students.

Joining the leadership council is an opportunity to represent student interests, develop leadership, and make a lasting contribution to the growth of St Ivo Sixth Form.





## STUDENT

# EXPERIENCE

### Your sixth form timetable

Your timetable balances subject lessons, independent study, and personal development. Alongside classwork, you are expected to complete guided study tasks set by your teachers.

Each day begins with tutor time (except assembly days), giving you space to stay organised and use supervised study effectively. During the week, you'll also take part in enrichment activities and dedicated sessions for personal development, careers, and study skills.

You'll have supervised study periods in the understudy, where staff are on hand to support you. This structure ensures you develop independence while building the skills needed for success beyond sixth form.

### Independent study and resources

Sixth formers are expected to study independently and prepare for lessons. Our resource centre, silent study rooms and understudy are open daily with access to books, journals and computers. Each subject provides a reading list, with key texts available in lessons and the understudy; students may also purchase personal copies for annotation. A bursary fund is available to support those who need help purchasing resources.

### Transport

We have excellent transport links to St Ivo Sixth Form including bus routes and the guided bus. The guided bus route also provides a large cycle path to neighbouring villages.



“Students in the sixth form value the expertise of their teachers and the quality of the instruction they receive. They produce detailed written responses to difficult and abstract concepts. Students are well supported to learn the subject knowledge they need.”

Ofsted, April 2024

CLUBS, SOCIETIES AND

## ENRICHMENT OPPORTUNITIES

Sixth form life offers more than just lessons, with a wide range of clubs, societies and enrichment activities to explore interests and develop new skills. From sports and music to debating and student-led societies, these opportunities are a fun way to connect with like-minded people and make lasting friendships.

- STEM and competitive applications
- The faculty cup football tournament
- Arts and crafts
- Book club
- Senior choir
- Competitive and recreational sports
- Theatre club and school productions
- Chess club
- Tennis club
- Debating
- Foreign film club
- Italian language and culture
- Japanese
- Yoga
- Life skills
- Writing group

Not found anything that appeals? Why not start your own club or society? The sixth form committee would love to assist and support you with this!

We also ensure that students have access to personal development sessions covering topics such as driver safety, sexual health, mental wellbeing, and financial management.





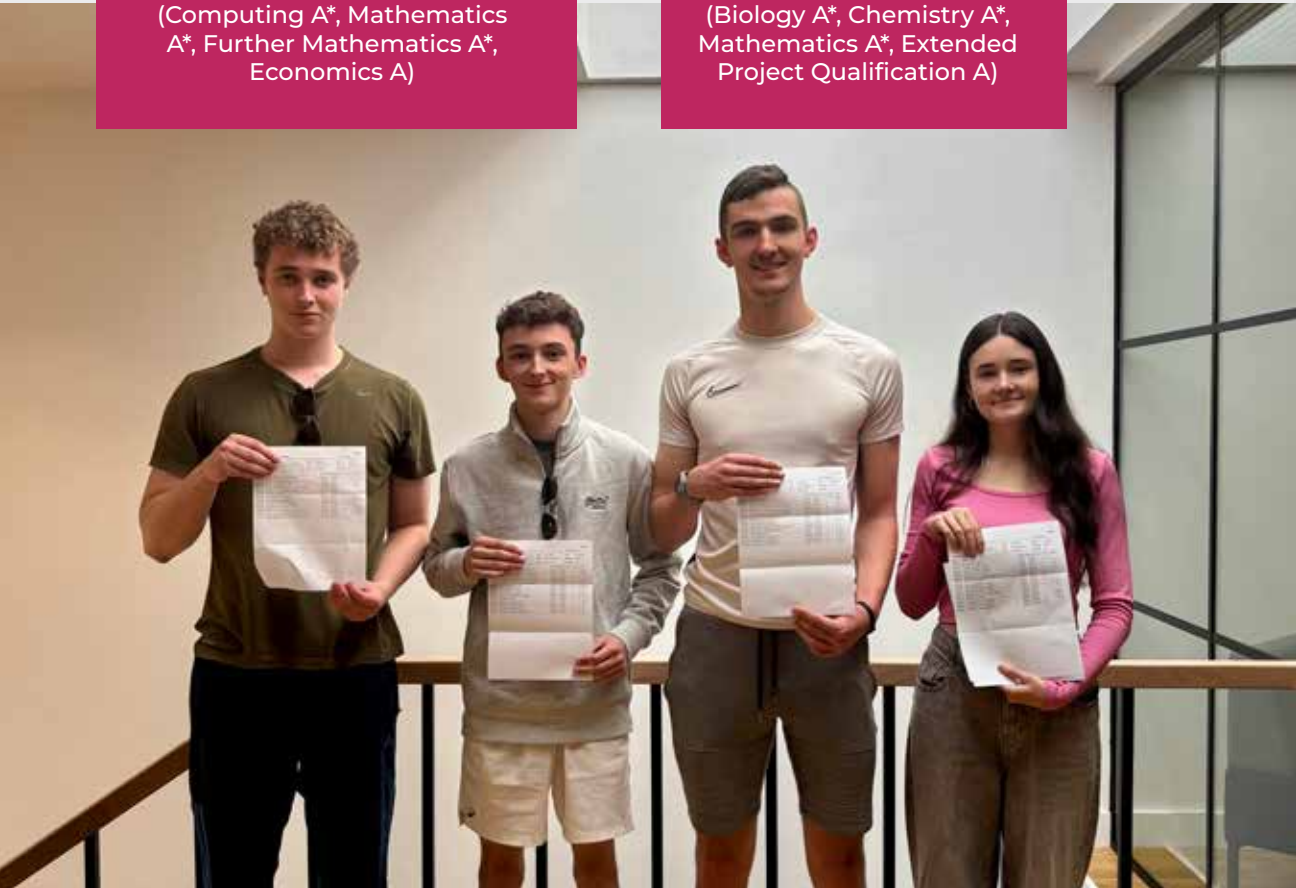
OUR  
**STUDENT'S GRADES**

**Josie**

is going to read Mathematics at Emmanuel College, Cambridge (Computing A\*, Mathematics A\*, Further Mathematics A\*, Economics A)

**Amy**

is going to study Medicine at Anglia Ruskin University (Biology A\*, Chemistry A\*, Mathematics A\*, Extended Project Qualification A)



Other high performers include:

**Finlay** is going to study aerospace engineering at Sheffield University (geography A\*, mathematics A\*, physics A\*, extended project qualification B)

**Alex** is going to study civil engineering at Bristol University (computing A\*, mathematics A\*, physics A\*, extended project qualification B)

**Jake** is going to study law at University of York (biology A, geography A, law A, extended project qualification A)

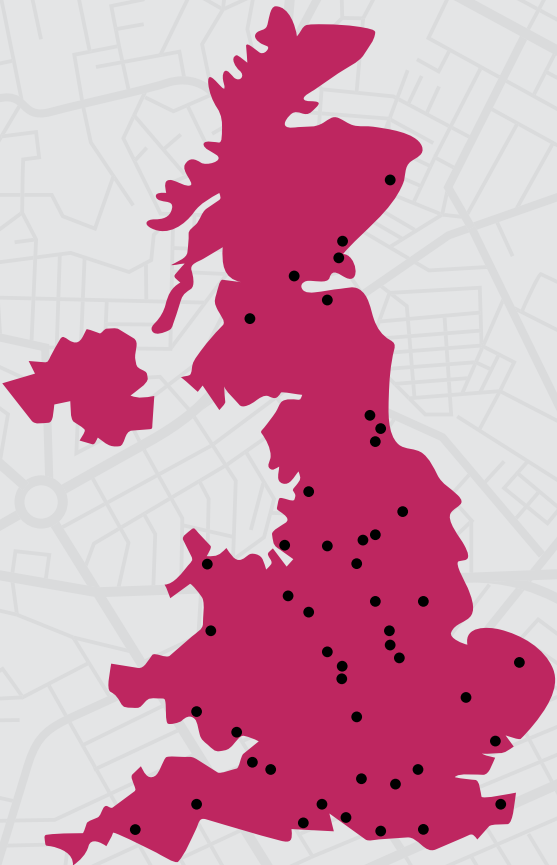
**Kaziu** is going to study physics at Birmingham University (computing A, mathematics A\*, physics A, extended project qualification A)

# Our Destinations

- Cardiff Metropolitan University
- Durham University
- Edinburgh Napier University
- Northumbria University, Newcastle
- Norwich University of the Arts
- Nottingham Trent University
- Oxford Brookes University
- Queen Margaret University, Edinburgh
- Queen Mary University of London
- Ravensbourne University, London
- Royal Holloway University
- Sheffield Hallam University
- Central Film School, London
- University of Bath
- University of Birmingham
- University of Brighton
- University of Bristol
- University of Cardiff
- University of Central Lancashire
- University of Chester
- University of East Anglia
- University of Essex
- University of Greenwich
- University of Hertfordshire
- University of Kent
- University of Lancaster
- University of Leicester
- University of Lincoln
- University of Liverpool
- University of Loughborough
- University of Newcastle
- University of Northampton
- University of Nottingham
- University of Plymouth
- University of Portsmouth
- University of Sheffield
- University of Southampton
- University of St Andrews
- University of Surrey
- University of Warwick
- University of West of England, Bristol
- University of Westminster, London
- University of York

**International**

- University of New Hampshire, USA



## SUPPORT AND GUIDANCE

St Ivo's Sixth Form combines a strong academic record with an outstanding pastoral support system, ensuring students thrive both academically and personally. Our tutorial programme is a key strength, offering daily informal contact with tutors to guide and nurture students in making wise choices. Tutors are specially trained to support tutees across a wide range of areas, from academic progress and personal development to university applications, career preparation, and general wellbeing.

### **Our programme includes:**

- Fortnightly one-to-one meetings with tutors to discuss progress, career planning, independent study, and pastoral concerns.
- Regular tracking points throughout the year to review educational and personal development, assessing predicted grades, work ethic, homework, and organisational skills. Tutors and students use this information to create personalised action plans, all recorded on Bromcom.

- Mock exam periods: one for year 12, two for year 13.
- Parent/Carer evenings: two in Year 12, one in Year 13, with additional consultations as needed.
- Personal development sessions covering topics such as driver safety, sexual health, mental wellbeing, and financial management.
- Information on gap years, studying abroad, and working overseas.
- Close liaison with universities including Cambridge, Oxford, Anglia Ruskin, and Lincoln, who contribute to our advice and guidance programme.

The sixth form team includes our assistant principal, head of sixth form and a deputy head of sixth form, form tutors, and a sixth form administrator, all dedicated to supporting student development. Throughout sixth form life, students are encouraged to take responsibility for their learning and personal growth.



### **Financial support**

St Ivo's Sixth Form offers support through the 16–19 Bursary Fund scheme. Students experiencing financial hardship, from low-income families, or in care, may be eligible for additional funding. This bursary can help cover the costs of textbooks, revision guides, specialist equipment, essential trips, and exam-related fees. The school provides guidance throughout the application process to ensure support is received promptly. Application forms are available on our website, and students are encouraged to speak to their tutor or head of year for further advice.





## YOUR **ACADEMIC SUPPORT**

### **Work shadowing**

In July, year 12 students will complete a work shadowing placement of their choice within a sector of future interest to them. This opportunity will help support future applications to university, apprenticeships and employment. The organisation of these placements is completed via the Unifrog platform.

### **Careers**

We are a comprehensive sixth form. Whilst the vast majority of our students go on to study at university, some go to further education college, begin apprenticeships, or start work. Tutors and pastoral leaders are trained in guiding you along the path that is right for you.

St Ivo Academy Sixth Form currently works with Form the Future who offer bespoke careers advice to our students. We also subscribe to Unifrog which provides a wealth of advice for both university admissions and alternative routes such as apprenticeships. Our tutors are trained to support the aspirations of all students and offer individual, tailored support. We have specialist support for Oxbridge applicants, those students who intend to apply for highly competitive courses or apprenticeships are offered mock interviews with external specialists. Throughout the year we run a variety of events that support both research and applications, including trips to both the National Apprenticeship fair and the UCAS exhibition.

### **Volunteering**

All students are expected to designate a proportion of their study periods to personal development and contribution. This includes completing supporting qualifications, volunteering in the community, and supporting younger students in KS3 lessons across the school.



# ENTRY REQUIREMENTS

## Entry requirements

All students wishing to join St Ivo Academy Sixth Form must meet the minimum grades required for their chosen subjects. Offers are based on predicted grades, which can be reviewed if actual GCSE results are higher. Students who do not meet the predicted grades must meet with the sixth form team before starting.

## General requirements

- A minimum of five GCSEs at grade 5 or above, including English and mathematics (some subjects may have higher requirements).
- Students who do not achieve grade 5 in English or mathematics may need to retake the subject (exceptions considered for narrowly missed grades).
- Level 3 subjects usually require at least a grade 5 in that subject at GCSE, with some requiring grade 6—check individual subject pages for details.

## Oversubscription

If a subject is oversubscribed:

1. Places are allocated to students with the highest grade in that subject.
2. Ties are broken by the highest overall GCSE average.
3. If still tied, the highest average in English and mathematics is used.

Students must select subjects using the subject block sheet on the sixth form website to avoid timetable clashes.



## How to apply

Choosing your post-16 options is an important decision, and St Ivo Academy Sixth Form is here to guide you. Applications are welcome from students in St Ives and beyond via the MyChoice16 platform.

## Step-by-step application process

1. Log in to your MyChoice16 account.
2. Select 'My Applications'. To start a new application, click 'Start a new Application'; to continue an existing one, click 'Continue' next to your application.
3. Complete all sections of your 'Profile Template' if this is your first application. For additional applications, only 'Course Choices' needs to be completed.
4. Qualifications will be uploaded by the school—this section can be skipped. Your form tutor will add a reference.
5. Complete any remaining fields or checkboxes. Click 'Send Application' to submit.
6. Your application status will update (eg. Sent, Schools Hold). The school will review your application to ensure it meets the requirements, and you may be asked to discuss it with a teacher.
7. Monitor your application regularly and respond promptly to any notifications.
8. All applicants will be invited to an interview before a provisional offer is made.

**Please note, the Academy reserves the right to amend the subject/course offer depending on staff availability and subject popularity. Any decision to change the offer will be communicated to applicants as quickly as possible.**



# A-LEVELS



A-LEVEL

## ART

### COURSE OUTLINE

This course is for students who love art, and who want to develop their intellectual, imaginative, creative and intuitive powers, alongside aesthetic understanding and critical judgement.

Students will learn to understand the interrelationships between art and design and develop an awareness of the contexts in which they operate. You will also increase knowledge and understanding from both contemporary and the historical viewpoints.

Complementary subjects include textiles, design technology, as well as humanity subjects such as English Literature or history. Many students go on to art foundation courses before pursuing art-related courses at university or the world of work.

The A-level course consists of two components, both teacher assessed and externally moderated. Component 1: Personal Investigation and Component 2: Externally Set Assignment. There will be opportunities to visit galleries locally and further afield.

**“From the beginning of A-level art, I feel not only have I grown in technical ability, but thanks to the guidance and support of our teachers I have grown in confidence and developed skills I can apply in everyday life.”**

### A-LEVEL

Edexcel 9FA0

#### Assessment

60% Component 1  
40% Component 2

#### Entry requirements

Five 5's including  
English and 4+  
in mathematics

#### Subject lead

Lucy Kingsbury



## A-LEVEL BIOLOGY

### COURSE OUTLINE

Biology is an eye-opening subject to study that allows you to cover a wide range of interesting and engaging topics.

You will develop your skills in thinking about the activity of your body and all the incredible organisms in the world around you. As well as the theory, there is the important experimental aspect of the course, assessed through a variety of engaging practicals and logged in a lab book. We are one of a select number of schools where you will get the opportunity to actually make recombinant plasmids (normally a university experiment) rather than just learning about it.

Biology is an excellent subject to have if you would like to be involved in pharmaceuticals, physiotherapy or ecology; if you hope to go to university to study medicine or psychology; or if you wish to be involved in caring, medical or sports professions later on. Complementary subjects include chemistry, sports, psychology, geography and mathematics.

To have the widest possible choice in future, especially if you wish to study science at university, you should consider taking two science A-levels. Most university courses count mathematics, geography or psychology as a second science.

### A-LEVEL AQA, A2(7402)

**Assessment**  
100% Exam  
Plus a practical endorsement

**Entry requirements**  
General entry requirements on page 22

Grade 6+ in GCSE mathematics

Grade 6+/6+ including biology in GCSE combined science or two grade 6+ including biology in triple science

**Subject lead**  
Caroline Marshall



## A-LEVEL BUSINESS STUDIES

### COURSE OUTLINE

If you want to know more about how businesses make decisions, solve problems and earn profits, then A-level business studies is for you.

Business studies gives you the opportunity to learn about strategic decision making, together with functions and roles of business activities such as marketing and finance. An interest in current affairs is essential, together with a willingness to learn and apply business models and ideas to a variety of contexts.

**"It is exciting to study the models and theories which we then see real world businesses using. I particularly enjoy business strategy in year 13 because we study how companies such as Apple operate."**

### A-LEVEL AQA 7132

**Assessment**  
100% Exam

**Entry requirements**  
Five 5's including English and 4+ in mathematics

**Subject lead**  
John Burniston

The course focuses on business functions, external influences and strategic decision making, and is assessed by three examinations at the end of year 13. A-level business studies will allow you to develop your skills of research, communication, analysis and evaluation, all of which prepare you well for higher education. This subject works well with economics, philosophy, mathematics, English and politics.





## A-LEVEL CHEMISTRY

### COURSE OUTLINE

Are you a future medic, vet, engineer, biomedical scientist or pharmacist? If so, chemistry is for you!

Although challenging, the A-level chemistry course enables you to study areas such as drug synthesis and analysis, reaction mechanisms and chemistry of some biological compounds. There are opportunities to take part in master classes at university laboratories. Students also have the chance to take part in prestigious competitions and gain Olympiad awards from the Royal Society of Chemistry.

The course comprises topics within the areas of physical, inorganic and organic chemistry, building on GCSE components. The required practical element of the course develops skills in all areas. A minimum of 12 experiments are completed, recorded and analysed. Complementary subjects include biology, physics, geography and mathematics.

To have the widest possible choice in future, especially if you wish to study science at university, you should consider taking two science A-Levels. Most university courses count mathematics, geography or psychology as a second science.

### A-LEVEL

AQA, 7404, 7405

#### Assessment

100% Exam  
Plus a practical endorsement

#### Entry requirements

General entry requirements on page 22

Grade 6+ in GCSE mathematics

Grade 6+/6+ including chemistry in GCSE combined science or two grade 6+ including chemistry in triple science

#### Subject lead

Caroline Marshall



## A-LEVEL COMPUTER SCIENCE

### COURSE OUTLINE

Computer science is about how we can use computers to represent, store, communicate, manipulate, understand and make use of information.

At A-level, you will build upon a basic understanding of computing that will then focus on algorithms, programming, and computer systems. You will gain an extremely relevant qualification that will open doors to more advanced study at university, and possibilities for computer-related apprenticeships in industry.

The aims of this qualification are to enable learners to develop a sound understanding of: systems analysis (including computational thinking, abstraction, decomposition, modularisation), systems design (including object design, algorithm design, understanding data types and data exchange), creating systems and systems application (including network and internet technologies, legalities and culture).

Assessment comprises: two written exams - Component 1 Computer Systems, and Component 2 Algorithms and Programming - each worth 40%, and coursework (an independent project) that is worth 20%.

### A-LEVEL

OCR H446

#### Assessment

80% Exam  
20% Coursework

#### Entry requirements

General entry requirements on page 22

Grade 6+ in GCSE computer science

Grade 6+ in GCSE mathematics

#### Subject lead

Steven Hill

“The world is full of wonders, but chemistry makes them more spectacular.”

“Computer science is an important A-level for me because it can be a gateway into many other jobs, owing to the influence that computers have on our daily lives.”



## A-LEVEL EDEXCEL 9DR0

**Assessment**  
40% Written Exam  
40% Devising  
20% Performing Scripts

**Entry requirements**  
Five 5's including English  
and 4+ in mathematics

If drama studied at  
GCSE grade 5+

If student has not  
studied GCSE drama, an  
interview ascertaining  
their practical experience  
would be required

**Subject lead**  
Jamie Smith

A-LEVEL

# DRAMA AND THEATRE

## COURSE OUTLINE

This is a great choice if you have an interest in how theatre-makers create meaning for audiences.

**The course will allow for scholars to:**

- develop and apply an informed, analytical framework for making, performing, interpreting and understanding drama and theatre
- understand the place of relevant theoretical research in informing the processes and practices involved in creating theatre
- develop an understanding and appreciation of how the social, cultural and historical contexts of performance texts have influenced the development of drama and theatre

- understand and explore the practices used in 21st-century theatre making
- experience a range of opportunities to create theatre, both published text-based and devised work
- participate as a theatre maker and as an audience member in live theatre.

This course will prepare you well for higher education and richly equip you for a wide range of career choices. Ex-students include TV presenters, puppeteers, midwives, business owners and a previous Mayor of St Ives. Complementary subjects include English Literature, dance, or indeed any subject since drama related skills are highly sought after in every career.

**“University admissions tutors recommend drama and theatre A-level as it broadens the range of academic and life skills that you need. I like it because it’s challenging and fun too.”**



## A-LEVEL AQA 7136

**Assessment**  
100% Exam

**Entry requirements**  
General entry  
requirements on page 22

**Subject lead**  
John Burniston

A-LEVEL

# ECONOMICS

## COURSE OUTLINE

If you have an enquiring mind and want to know how individuals, firms and governments make decisions that affect all of our lives, then A-level economics provides an excellent framework for understanding these issues.

Economics underpins our lives – from questions such as “Can we afford a free NHS?”, to “How come some business owners earn million-pound bonuses?” An interest in current affairs is essential, together with a willingness to learn and apply economic models and ideas to a variety of contexts.

We visit the Bank of England and there are opportunities to enter the Royal Economics Society Young Economist essay competition.

The course is 100% examined and comprises three components, two of which will focus on micro and macroeconomics, with the third being a synoptic paper. A-level economics will allow you to develop your skills of research, communication, analysis and evaluation, all of which will prepare you well for higher education. A-level economics works well with business studies, philosophy, history, mathematics and English.

**“Economics will help me in the future by giving me a further understanding of how the ‘real world’ works.”**





## A-LEVEL

OCR H472

**Assessment**  
80% Exam  
20% Coursework

**Entry requirements**  
Five 5's including  
English and  
4+ in mathematics

Grade 5+ in GCSE  
English Literature

**Subject lead**  
Jane Panter

A-LEVEL

# ENGLISH LITERATURE

## COURSE OUTLINE

This course is perfect for students who love to read and delve into the meaning, style and contexts of language, those who are not afraid to think deeply and work independently and those who enjoy discussion and debate about literature and how to interpret it.

This course is demanding yet varied and very enjoyable. Students will develop their writing, analytical and reading skills.

The course is 80% examined with 20% non-examination assessment. There are several texts to study including novels, short stories, plays and poetry.

The earliest texts pre-date Shakespeare and the most modern have only just been published.

This well-established and popular A-level course has a good reputation with universities and is a very useful qualification to have for any kind of humanities degree. Employers, too, respect the rigour and quality of the course. The choice of post-graduate options is very wide indeed. The subject provides a firm supportive basis for any course or employment requiring language skills of any kind.

**"The best thing about English is that you are encouraged to develop your own ideas. Discussion is really important, and I think this prepares you for university."**



## A-LEVEL

EDUQAS A670QS

**Assessment**  
70% Exam  
30% Coursework

**Entry requirements**  
Five 5's including  
English and 4+ in  
mathematics

If film studied at  
GCSE grade 5+

**Subject lead**  
Jane Panter

A-LEVEL

# FILM STUDIES

## COURSE OUTLINE

If you have a real enthusiasm for film as an art form, and you are excited by watching, reflecting and analysing films then film studies is the course for you.

The course also offers you the opportunity to become a filmmaker, learning the directors' craft and producing your own short films and screenplays. In addition, you could apply your skills outside the classroom as a film ambassador or member of Film Club.

You will study a broad range of films: mainstream and independent American cinema from the past and present, British film, global cinema, documentary, experimental and silent film. For the non-exam assessment element (30% of the course) you will study short film making and use this to inform your own work. A-level film studies equips you with both critical thinking skills and creative practical skills. The course works well with English Literature, photography, art, theatre studies and ethics.

**"I loved A-level film - it was hands down my favourite part of school. The teaching, the subject and the people combined to make school feel not just worthwhile but weirdly special."**



## A-LEVEL

AQA 7652

**Assessment**  
100% Exam

**Entry requirements**  
General entry requirements on page 22

Must have sat higher paper in GCSE French gaining Grade 6+

**Subject lead**  
Annalisa Champley-Potter

## A-LEVEL FRENCH

### COURSE OUTLINE

If you are interested in improving your linguistic skills and developing a greater understanding of how French speaking society has been shaped socially and culturally, and how it continues to change, then A-level French is for you.

French fosters a range of transferable skills including communication, critical thinking, research skills and creativity. You will study a range of contemporary social issues, including technological change and the diversity and the benefits it brings. You will also be looking at French speaking artistic culture, including music, cinema and

political power, and its impact on youth culture. There will be opportunities to take part in trips abroad and experience university lectures. A foreign language A-level will complement and enhance a whole variety of subjects, in particular students wishing to apply to Russell Group universities will benefit from having a language A-level alongside another facilitating subject, such as: mathematics, further mathematics, English Literature, physics, biology, chemistry, geography, and history. The course is comprised of two written papers as well as a speaking exam based on individual research project of your choice.

“French A-level is a challenging but satisfying course - I have really enjoyed this year. Having a small group gives a great opportunity to learn well in lessons.”



## A-LEVEL

AQA 7357

**Assessment**  
100% Exam

**Entry requirements**  
General entry requirements on page 22

Grade 8+ in GCSE mathematics

**Subject lead**  
Georgina Sargent

## A-LEVEL FURTHER MATHEMATICS

### COURSE OUTLINE

Further mathematics is a course designed for able students who want to extend their mathematical knowledge.

The course builds on from A-level mathematics and allows you to tackle a wider breadth of work and some more demanding topics. You will focus very strongly on pure mathematics. There are also lessons on statistics and decision mathematics throughout the course.

The A-level examination consists of two exam papers in pure mathematics and two more examination papers in further statistics and decision mathematics.

You would be well advised to take further mathematics if you are interested in a degree in mathematics, economics, physics, or engineering. However, the course is also interesting to anyone with a real appreciation of mathematics and wishes to extend their mathematical ability.

“At A-level I didn’t just learn to understand mathematics, I learnt to love it.”





## A-LEVEL

OCR H481

### Assessment

Physical systems exam 22%  
Human interaction exam 22%  
Geographical debates exam 36%  
Investigative geography Research Project – 20%

### Entry requirements

General entry requirements on page 22

If geography studied at GCSE grade 5+

### Subject lead

Matthew Durrant

## A-LEVEL

# GEOGRAPHY

### COURSE OUTLINE

If you are interested in a dynamic, challenging and highly topical course, focused on developing a deeper understanding of our world and the physical and human processes that shape it, then A-level geography is for you.

This course is for critical and reflective learners. You will study the complexity of people-environmental interactions, contemporary issues and the values, attitudes and circumstances impacting on people-place relationships. You will also develop qualitative and quantitative approaches to geographical enquiry.

As well as numerous fieldwork experiences you will be given opportunities to take part in optional lectures. There is also the opportunity to become a sixth form geography ambassador. The course comprises of three examined units and an independent investigation on a topic of your choice. Geography enables you to become a more informed 21st century citizen with a better understanding of the contemporary challenges facing our world today. The course complements many other subjects, particularly: history, politics, English literature and the sciences.

**"I'm really glad I have taken A-level geography - being both an arts and a science subject means it has given me far greater choice and flexibility when applying for a university course."**



## A-LEVEL

AQA 7662

### Assessment

100% Exam

### Entry requirements

General entry requirements on page 22

Must have sat higher paper in GCSE German gaining grade 6+

### Subject lead

Annalisa Champley-Potter

## A-LEVEL

# GERMAN

### COURSE OUTLINE

Interested in improving your linguistic skills and developing a greater understanding of how German speaking society has been shaped socially and culturally? German A-level is for you.

German fosters a range of transferable skills including communication, critical thinking, research skills and creativity.

You will study technological and social change, looking at the multicultural nature of German speaking society. You will study highlights of artistic culture including art and architecture and will learn how Germany's political landscape was formed.

There are opportunities to take part in trips abroad and experience university lectures. A foreign language A-level will complement and enhance a whole variety of subjects. The course is comprised of two written papers as well as a speaking exam based on an individual research project of your choice. In particular, students wishing to apply to Russell Group universities will benefit from having a language A-level alongside another facilitating subject, such as: mathematics, further mathematics, English literature, physics, biology, chemistry, geography, and history.

**"German at A-level is definitely a worthwhile subject! Compared to GCSE, the small group size gives you a more enjoyable learning experience. The topics are more varied, and lessons are both interesting and entertaining!"**



## A-LEVEL

OCR H505

**Assessment**  
80% Exam  
20% Coursework

**Entry requirements**  
General entry  
requirements on page 22

If history studied at  
GCSE grade 5+

**Subject lead**  
Dr Michael Craig

## A-LEVEL HISTORY

### COURSE OUTLINE

A-level history is bursting with thought provoking topics including interesting individuals such as Stalin, William Pitt the Younger and Michael Collins.

The study of A-level history requires you to weigh up differing points of view, to consider the perspectives of a range of authors, to critically analyse information and to debate with your peers. You will be expected to read around the subject and develop independent learning skills.

History works well with politics, geography, English literature and law and may lead into careers in journalism, media, law, the civil service, teaching and many more as the skills you learn in history will be useful whatever your career path. Our European and British History course is taught by specialist staff and supported by online resources. Twenty percent of the course is coursework.

“When I was applying for university, history A-level was seen as a well-respected subject.”



## A-LEVEL

AQA 7162A

**Assessment**  
100% Exam

**Entry requirements**  
General entry  
requirements on page 22

**Subject lead**  
James Lake

## A-LEVEL LAW

### COURSE OUTLINE

Whether you want to be a leading barrister, a human-rights campaigner, or just want to know how the justice system works, law A-level could be subject for you!

In law we study the English legal system and three areas of law: criminal law, tort law, and contract. You don't need any specific GCSEs, and law works well with any other combination of A-level subjects.

In criminal law we study murder, manslaughter, and other offences against the person, as well as theft. Tort law helps us understand if we can sue

someone if we're hurt due to someone else's negligence, or if they are causing a nuisance. Contract law is the legal underpinning of our civilised society; if we couldn't make binding promises to each other life as we know it would fall apart!

We also study legal philosophy, asking deep questions about justice, fairness, and morality. We will run a trip to Parliament and the Supreme Court in London, to see where our laws are made and ruled upon.

The course is 100% examined; our lessons are full of real-life cases and lively discussions!

“The visit to the Old Bailey in particular inspired me to study law at university and to pursue a career as a solicitor.”





## A-LEVEL MATHEMATICS

### COURSE OUTLINE

This demanding yet popular course focuses very strongly on pure mathematics, algebra, graphs, equations and trigonometry.

In addition, you will be introduced to calculus. There are also lessons on statistics and mechanics, building on knowledge from GCSE. You will also be taught to read and comprehend mathematical arguments and construct proofs.

The A-level examination consists of two exam papers in pure mathematics and a third paper in both statistics and mechanics. Mathematics A-level is well respected at all top universities, even if you are applying for a course without substantial mathematical content.

If you have an interest in studying economics, the sciences or engineering, then mathematics is usually viewed as essential, with further mathematics.

“Maths is coooool - Einstein.... well, that is what I would like to believe he said! But truly maths is indeed cool, and I believe it holds great importance with students and their future.”

**A-LEVEL**  
EDEXCEL  
9MAO/01/02/03

**Assessment**  
100% Exam

**Entry requirements**  
General entry  
requirements on page 22

Grade 6+ in GCSE  
mathematics

**Subject lead**  
Georgina Sargent



## A-LEVEL MUSIC

### COURSE OUTLINE

A-level music is for you if you are creative, passionate about music and its place in the world, and keen on continuing a practical approach to education.

A-level music lessons continue to combine practical and theory work at a high level, with a course that is stimulating and varied in its content. The A-level course offers academic rigour as well as opportunities to enjoy working with your peers practically. You will be key to inspiring younger musicians to develop their skills, participating in school showcases and expanding your experiences by attending relevant live music events.

“If you have an interest in music, you will learn so much and so many opportunities will open up to you. If you have a passion for music, take this course.”

**A-LEVEL**  
EDUQAS  
A660PA

**Assessment**  
40% Exam  
60% Coursework

**Entry requirements**  
General entry  
requirements on page 22

If music studied at  
GCSE grade 5+

If not studied ABRSM  
grade 5 theory and  
subject to a practical  
audition

**Subject lead**  
Jamie Smith  
Deborah Miller



## A-LEVEL PHOTOGRAPHY

### COURSE OUTLINE

An exciting yet demanding course, A-level photography aims to develop photographic, creative and intellectual skills along with the ability to analyse contextual references, techniques and processes using written annotation.

The A-level photography course consists of two components, both internally assessed and externally moderated, a thematic practical project and an essay of 1500 – 3000 words which relates to the contextual research within the practical work. Component 2 is externally set and thematically based.

An A-level in photography is excellent preparation for higher education courses in photography, illustration, graphic design, animation, and game design.

A bridge camera is sufficient, but students will not be able to rely solely on a phone camera. All computer equipment and related software is available at the academy.

### A-LEVEL EDEXCEL 9PYO

**Assessment**  
60% Component 1  
40% Component 2

**Entry requirements**  
Five 5's including English and 4+ in maths

Art based or film  
GCSE grade 5+

If photography studied at  
GCSE grade 5+

If none, portfolio of 12+ photographs (landscapes, portraits) - not holiday photographs

**Subject lead**  
Lucy Kingsbury



## A-LEVEL PHYSICAL EDUCATION

### COURSE OUTLINE

If you are interested in sport but want to delve deeper into the scientific and sociological aspects of sport, then this course offers you that opportunity.

The course focuses on physiological and psychological factors, and socio-cultural, historical and biomechanical effects, and seeks to establish how much impact they have on improving and then optimising sports performance.

Seventy percent of the course is examined, 15% is assessed in either practical performance or coaching and 15% is written coursework. Units covered

in the course include applied anatomy and physiology, skill acquisition and sport and society.

Physical education combines well with subjects such as biology, English literature, history and physics. Sports studies/Sports science can be studied at undergraduate, master's degree and PhD level. Many jobs in the sport and leisure industry are now looking at sports studies as an essential background for future development. Physical education is also an advantage when looking into jobs such as physiotherapy and sports journalism.

### A-LEVEL AQA 7582

**Assessment**  
70% Exam  
30% Coursework

**Entry requirements**  
General entry requirements on page 22

Grade 6+/6+ in GCSE combined science or any two grade 6+ in triple science

If physical education studied at GCSE grade 5+

**Subject lead**  
Paul Cook

**"I chose photography because it changes the way you see everyday things. Suddenly you notice light, shapes, colours, textures. Everything around you looks different when you see the world as a photographer."**

**"I have thoroughly enjoyed my two years in A-level PE. I have learnt how the body functions in sport and as a result improved as a performer."**





## A-LEVEL

AQA A2 7408

**Assessment**  
100% Exam  
Plus, a practical endorsement

**Entry requirements**  
General entry requirements on page 22

Grade 6+ in GCSE mathematics

Grade 6+/6+ including physics in GCSE combined science or two grade 6+ including physics in triple science

**Subject lead**  
Caroline Marshall

## A-LEVEL PHYSICS

### COURSE OUTLINE

Are you inquisitive and do you enjoy solving problems using mathematics? Then physics is a possibility for you.

A-level physics is a course that aims to explain why everything works; from a Ferris wheel at a fairground to the quantum theory surrounding the gold leaf electroscope.

The course comprises a series of modules that build upon work studied at GCSE. The aim is to gain a deeper understanding of those topics and develop high-level problem-solving skills.

There is a practical element of the course which requires the completion of 12 experiments that are recorded and analysed in a lab book. Complementary subjects include chemistry, biology and geography. Mathematics is strongly recommended.

To have the widest possible choice in future, especially if you wish to study science at university, you should consider taking two science A-levels. Most university courses count mathematics, geography or psychology as a second science.

■ “A fascinating subject that I am going to continue with into university.”



## A-LEVEL

EDEXCEL 9PLO

**Assessment**  
100% Exam

**Entry requirements**  
General entry requirements on page 22

Grade 5+ in GCSE English language or grade 5+ in GCSE history

If politics studied at GCSE grade 5+

**Subject lead**  
James Lake

## A-LEVEL POLITICS

### COURSE OUTLINE

If you are interested in current affairs and the ways in which different views in society are managed, how conflict is resolved and where power is located, then A-level politics is the course for you.

A-level politics is a course for inquisitive minds. Studying politics will enable you to develop your understanding of the government and politics of the UK and USA, along with all the fiercely debated topics this includes. You will normally get the opportunity to take part in debates, visit the Houses of Parliament and enjoy a programme of visiting speakers. In addition, there will be leadership opportunities in a student-led politics society.

The course comprises of three components, two of which will be on UK government and politics, together with political ideas. The third component is about US politics and a comparison with the UK. A-level politics will allow you to develop your skills of research, communication, analysis and evaluation, all of which will prepare you well for higher education. In year 12 there will be an opportunity to visit the Houses of Parliament.

This subject works well with history and English literature.

■ “At first, I was unsure whether I made the right decision choosing politics. Now I never look back! If you like class debates and current affairs, then politics is the subject for you!”



## A-LEVEL

AQA A2 7182

### Assessment

100% Exam

### Entry requirements

General entry requirements on page 22

Grade 6+/6+ in GCSE combined science or any two grade 6+ in triple science

### Subject lead

Edith Robinson



## A-LEVEL

AQA 7192

### Assessment

100% Exam

### Entry requirements

General entry requirements on page 22

### Subject lead

James Lake

## A-LEVEL

# PSYCHOLOGY

## COURSE OUTLINE

If you are interested in studying people and the reasons why different people behave the way they do, then psychology is the course for you.

The psychology specification introduces students to the broad range of psychology topics from the ways people influence our behaviours, how the attachments we make as a baby can affect our behaviour as adults, and psychopathology (what is normal/abnormal, depression, OCD and treatment). You will also study research methods.

The second year builds on the first and has options with forensic, schizophrenia and relationships being the current favourites. Twenty percent of the course is science-based and 10% mathematically based and the course is 100% examined. A-level psychology works well with all academic and creative subjects. For career opportunities, the understanding and analysis of human behaviour and experience is relevant to all areas.

“Psychology broadened my thinking - I now have more understanding and empathy for other people.”

## A-LEVEL

# SOCIOLOGY

## COURSE OUTLINE

Sociology is the study of society and human behaviour. It is a social science that aims to understand human behaviour by studying social facts. If you are interested in people and different ways of explaining the world then sociology is the subject for you.

A-level sociology is an engaging course which will interest anyone who is curious about society and the influences that shape us all as individuals and groups. Sociologists have different perspectives on society, and these perspectives will influence their theories. Sociologists produce research which strives to inform effective government policy.

They seek to understand society and to draw conclusions on how positive changes to society can be realised.

In sociology you will study education, the family, media, and crime. You will come to understand the perspectives of Marxists, feminists and functionalists as well as many others.

The course will allow you to develop your skills of analysis and evaluation, as well as your ability to critically assess the validity and application of various research methods. This course works well with many subjects including other social sciences such as geography, politics, economics and psychology.

“Sociology gives us the tools to see the world not just as it is, but what it could be”





## A-LEVEL

EDEXCEL 9TEO

### Assessment

60% Component 1  
40% Component 2

### Entry requirements

Five 5's including English  
and 4+ in mathematics

If textiles studied  
at GCSE grade 5+

### Subject lead

Lucy Kingsbury

## A-LEVEL

# TEXTILES AND FASHION

## COURSE OUTLINE

This diverse and fascinating course aims to develop your fashion and textile techniques, creative and intellectual skills along with the ability to analyse contextual references, using written annotation.

The A-level textiles and fashion course consists of two components, both internally assessed and externally moderated, a thematic practical project and an essay of 1500 – 3000 words which relates to the contextual research within the practical work.

Component 2 is externally set and thematically based. It is advantageous to be able to work with a sewing machine at home, but it is not essential. It is very important to be equipped with a box of textile tools and materials.

An A-level in textiles and fashion is excellent preparation for higher education courses in subjects such as fashion design, textiles, interior design, fine art, illustration, and decorative arts.

There will normally be opportunities to visit galleries and the Stitch and Knit exhibition.

**"The course offers me the chance to learn a wide variety of fashion and textile skills. I can express myself creatively and it exposes me to the possibility of working in the fashion and design related industry."**



## AS-LEVEL

AQA 7993

### Assessment

100% Coursework

### Entry requirements

General entry  
requirements on page 22

### Subject lead

Paul Cook

## AS-LEVEL

# EPQ

## (Extended Project Qualification)

## COURSE OUTLINE

The EPQ is an AS-level qualification which is taken in addition to your other A-level courses.

This allows you to research almost any topic of interest, an A-level subject, something that you enjoyed at GCSE, or an outside interest. Your project will follow one of two routes. Most students produce a 5,000 word report answering an essay question: eg "To what extent can electric cars solve global warming?" Others choose to produce an artefact with a smaller report to explain the research process. Students have made a drum, a computer logic gate, a story in the style of Roald Dahl.

Those thinking of applying to university should take EPQ. It demonstrates an

ability to work independently and can be used to show passion for learning outside of lessons. Additionally, some universities can offer reduced entry requirements for students who have undertaken the EPQ. Please check individual universities for details.

You will have one lesson per week throughout the year. Between September and January, you will work with your supervisor as a group to identify your individual topics and learn how to research independently. From February onwards you will receive one-to-one tutorials. You will complete your product (report or artefact) in June and then conduct a presentation to staff and fellow students outlining your EPQ journey.

**"The EPQ is the perfect way to prepare for university. I developed some important skills and really enjoyed the opportunity to research a topic of personal interest."**

# LEVEL 3 SUBJECTS



## LEVEL 3

## CHILDREN'S PLAY, LEARNING AND DEVELOPMENT

### COURSE OUTLINE

This course introduces study of the early years sector. It is intended as an academic yet vocational qualification and is equivalent in size to one A-level. It supports access to a range of higher education courses, possibly but not exclusively in the early years sector, if taken alongside further level 3 qualifications or A-levels.

There are three mandatory units which cover the following topics:

- children's development
- communication and numeracy
- play and learning

Students can select one optional unit, which will support their progression to specialised degree programmes in the sector, and covers areas such as: physical development, care and health needs; keeping children safe; The Early Years Foundation Stage.

Students will also need to complete 50 hours' work experience in the sector working with children between the ages of newborn to seven years.

“Studying this course has shown me how the smallest interactions can make the biggest difference in a child's life”

## LEVEL 3

Pearson BTEc National  
(Extended Certificate)

### Assessment

50% Exam

50% Internal  
Assessment

### Entry requirements

Five 5's including  
English and 4+ in  
mathematics

Grade 5/5 in GCSE  
combined science or  
any two grade 5+ in  
triple science

### Subject lead

Kelly Evans





### LEVEL 3

WJEC  
EDUQAS 4563QD

**Assessment**  
Year 12 : 50% exam,  
50% coursework  
Year 13 : 100% coursework

**Entry requirements**  
Five 5's including English  
and 4+ in mathematics

Grade 5/5 in GCSE  
combined science or any  
two grade 5+ in triple  
science

If food technology  
studied at GCSE grade 5+

**Subject lead**  
Kelly Evans

### LEVEL 3

## FOOD SCIENCE AND NUTRITION

### COURSE OUTLINE

If you are interested in food, the relationship between food and the human body as well as practical skills for cooking and preparing food, then level 3 food science and nutrition is the right course for you.

The course encourages reflective practices, encouraging a creative and innovative approach to learning. The course allows you to develop both academic and practical skills through applied learning. This includes regular practical lessons, working with a wide variety of foods, visits to Borough market and links with local businesses.

Assessment is through written examination, projects and case studies and so is suitable for all learning styles.

Practical lessons take place most weeks and students are expected to bring ingredients from home. The amount per practical can sometimes be £5, although every effort is made to keep costs down. In exchange for this cost, a delicious dish which may be served as part of the family meal is produced. It is acceptable to make small quantities if this fits the family budget more appropriately.

Level 3 food science and nutrition is equivalent to one A-level and works well with A-level biology, chemistry, mathematics, psychology and the art subjects.

**"Food science prepared me fully for my university course. It provided a very solid foundation from which to study, you learn all of the practical skills and it's FUN!"**



### LEVEL 3

OCR Cambridge  
Advanced National  
(Extended Certificate)

**Assessment**  
Six units over the two-year  
course: 200 GLH - four  
units of NEA assessment  
160 GLH - two units  
externally assessed

**Entry requirements**  
Five 5's including English  
and 4+ in mathematics

Grade 5/5 in GCSE  
combined science or any  
two grade 5+ in triple  
science

**Subject lead**  
Kelly Evans

### LEVEL 3

## HEALTH AND SOCIAL CARE

### COURSE OUTLINE

This course is designed for those interested in health care, social care and childhood education.

The foundations of the course are built on developing knowledge of the various job roles in the health, social and early year's sectors. You will develop a knowledge of the importance of safeguarding, effective communication and caring skills. This course is equivalent to one A-level.

The course aims to support employment in the health and social care sector. We cover positive relationships, equality, diversity and rights of individuals. Learn about the implication of the 2010 Equality Act, as well as considering safety and security within the sector. You will go

on to study anatomy and physiology and the long-term impact of physiological conditions, and nutrition for health. A good level of science knowledge is required.

You will also learn to research and reflect on issues affecting the care sector, gaining an insight into the day-to-day working practices and how changes made at government level affect practitioners and clients. This subject is suitable for students interested in professions such as nursing, midwifery, social work or counselling and for students who wish to work with young children, whether in nurseries or the teaching profession. You will develop skills and knowledge for entry to university courses or employment in the health, social care or Early Years setting.

**"Health and social care provides an understanding of many different job roles and can be a template for your own future career."**



### LEVEL 3

BTEC Edexcel 601/7233/2

**Assessment**  
60% Externally Assessed  
40% Internally Assessed

**Entry requirements**  
Five 5's including English and 4+ in mathematics

BTEC level 2 dance qualification at level 2 pass or better, if studied. If not, experience in dance required

**Subject lead**  
Lindsay McAdam



### LEVEL 3

Cambridge Technical  
OCR Introductory Diploma  
05409 & 05415

**Assessment**  
25% Exam  
75% Coursework

**Entry requirements**  
Five 5's including English and 4+ in mathematics

Level 2 merit in BTEC/vocational sport if studied

**Subject lead**  
Paul Cook

#### LEVEL 3

## PERFORMING ARTS (DANCE)

### COURSE OUTLINE

You will develop your technical, performance and choreographic skills, learn set repertoire, and appreciate existing professionals' work.

With this course you will complete two internally marked units and two externally marked units. You will be required to join our extra-curricular activities and perform in our annual production of Ivolution.

There are four components to this course – year 12: developing skills and techniques for live performance (internal) and investigating practitioners' work

(external); year 13 covers movement in performance (internal) and a group performance workshop (external).

Throughout the course you will have opportunities to work with visiting professional dancers and choreographers, helping you to develop your technical, performance and choreographic skills in relation to the units of study. The course combines both theoretical and practical work and complements your other subject choices while preparing you for future study at university for dance, performing arts or musical theatre courses.

**"I found this course really interesting as we were given the opportunity to experiment with and explore different styles of dance. This course has further helped my confidence, physical strength and allowed me to gain the knowledge that I need to move towards a career in dance."**

#### LEVEL 3

## SPORT

### COURSE OUTLINE

This course is for students with a passion for sport and the sports industry.

In year 12 students undertake the introductory diploma in sport. This comprises of six units and is equivalent to one A-level. In year 13 students complete a further six units.

Together with the units studied in year 12, this will lead to a diploma in sport, which is equivalent to two A-levels. All units are centre-assessed and externally moderated by OCR. The full qualification and units from this course are graded as pass, merit, distinction or distinction star.

You will cover topics including coaching, health, fitness, injury, local and national sport and the sports industry. The course has a strong practical emphasis and includes work experience visits to sporting facilities to learn, study and practice new skills.

You can study sport studies/sports science or physical education teaching at degree level. Many jobs in the sport and leisure industry are now looking at sports studies/physical education as an essential background for future development. Sports studies is also an advantage when applying for roles in leisure management, gym instruction and sports coaching.

**"Put the effort in and you will reap the rewards!"**





**ST IVO**  
**Sixth Form**

Astrea Academy Trust  
LEARN, THRIVE, SUCCEED

## ENQUIRIES

Website: [www.astreastivo.org/sixth-form/](http://www.astreastivo.org/sixth-form/)

Email: [sixthform@astreastivo.org](mailto:sixthform@astreastivo.org)

Phone: 01480 375 400

If you would like to contact a subject lead,  
please use the following format  
[firstname.surname@astreastivo.org](mailto:firstname.surname@astreastivo.org)



@StIvoSixthForm

**St Ivo Sixth Form**

High Leys, St Ives, PE27 6RR

