

SIXTH FORM PROSPECTUS

2025 - 2027



INSPIRING BEYOND MEASURE



CONTENTS

2 Principal's Welcome	38 Product Design (Resistant Materials)
3 Sixth Form Leadership Council	39 Psychology
4 Support and Guidance	40 Sociology
6 Your Sixth Form Day	41 Textiles/Fashion
7 Facilities, Clubs, Societies & Volunteering	42 Level 3 Introduction
8 Expectations	43 Children's Play, Learning & Development
9 Entry Requirements	44 Computing
10 How To Apply	45 Performing Arts (Dance)
13 A Level Introduction	46 Food Science and Nutrition
14 Art	47 Health and Social Care
15 Biology	48 Sport
16 Business Studies	
17 Chemistry	
18 Computer Science	
19 Drama & Theatre	
20 Economics	
21 English Literature	
22 Extended Project Qualification	
23 Film Studies	
24 French	
25 Further Mathematics	
26 Geography	
27 German	
28 Graphic Communication	
29 History	
30 Law	
31 Mathematics	
32 Music	
33 Philosophy, Theology & Ethics	
34 Photography	
35 Physical Education	
36 Physics	
37 Politics	

38 Product Design (Resistant Materials)
39 Psychology
40 Sociology
41 Textiles/Fashion
42 Level 3 Introduction
43 Children's Play, Learning & Development
44 Computing
45 Performing Arts (Dance)
46 Food Science and Nutrition
47 Health and Social Care
48 Sport

All information is accurate at the time of going to press. However courses continue to be reviewed by the government. Please see the Academy website for further details.

The school would like to thank all contributors to this prospectus and the kind permission of staff and students for their inclusion in this publication.

Designed & created by St Ivo Academy

St Ivo Academy Sixth Form
Astrea Academy Trust
High Leys, St Ives,
Cambridgeshire PE27 6RR
Tel: 01480 375400
Email: sixthform@astreastivo.org
Web: www.astreastivo.org

Principal's Welcome

It is my pleasure to welcome you to the prospectus for St Ivo Academy Sixth Form. The core aim of the academy is to help students to achieve their very best. For those of you about to embark on post-16 study this means helping you to achieve at the highest standards in your chosen subjects and to prepare you for the next stage in your career; be it university, vocational training, apprenticeship or employment. Whatever your long-term goal you can be assured that you are joining a sixth form with a strong and established reputation for academic success, pastoral support and opportunities beyond the classroom.

One of the strengths of St Ivo Academy Sixth Form is the range of courses we offer. Over the coming pages you will see a wide variety of both subjects and types of courses. The joy of education post-16 is the discovery of new and exciting subjects alongside developing a deeper appreciation of those you are already familiar with. Choosing the right subjects is a tough decision at this stage but both staff and current students will be happy to share their experiences and advice with you.

A good sixth form education is not simply about the subjects you study and the grades that you achieve; although there is no escaping their central importance. There is also a wealth of opportunities for you to get involved in the wider life of the sixth form and to develop additional skills. I have been hugely impressed by the leadership qualities on show in the sixth form and by the vast amount of

community leadership opportunities and fund-raising work that takes place here at St Ivo. The sixth form offers many enrichment opportunities. These enable students to take part in new activities or to take part in visits locally, nationally and even internationally. It is the combination of all these elements that makes our sixth form such a dynamic place and our students a group of young adults that makes us and the wider community proud.

The decision about what to study at sixth form is an important one. I am confident that St Ivo Academy Sixth Form can offer you the range of courses, quality of teaching and enrichment opportunities to make for a stimulating and fulfilling two years which will prepare you for the next stage in your life.

We are all happy to discuss your choices with you and to show you how our sixth form operates.

We look forward to welcoming you to St Ivo Academy Sixth Form.



Tony Meneagh
Principal

SIXTH FORM LEADERSHIP COUNCIL

St Ivo's Sixth Form Leadership Council is a peer-appointed body made of student representatives from across the Sixth Form. We work closely with subject departments, the whole school student council, house councils and the St Ivo Academy Leadership Team to ensure that all students have the best experience possible. Led by us, the Council is compiled of passionate student representatives, chosen by us for their ideas and ambitions. We aim to constantly adapt to the students' needs thanks to regular meetings, where we look to address issues, plan school-wide events and improve everyday school life.

We believe that the school environment has a huge impact on the learning of our students, so having the Council allows the students themselves to bring about the change and growth they believe is needed. The Council provides a unique point of view and allows students to seize opportunities and develop the important skills they'll need going forwards.

We pride ourselves on our charitable events; as a collective we are always looking at new ways to make a difference through special events that also help raise money for the respective charities. These events come in many forms, allowing a wide range of students to get involved from dress-down days such as Pink Day to small sport-based competitions such as the House cycle-off. These events are integral to the Ivo's character and offer an enjoyable time for the students involved.

As a team, we have regular meetings with the Principal, plan and present assemblies and propose new ways to create a positive community and provide an enriching experience for students based on their individual development and needs.

Our Council stands to empower our students to be proactive and fine tune their essential skills. We believe that the ongoing development of our Sixth Form and school as a whole is our duty. As students we play a vital role in developing the opportunities that studying at St Ivo provides. If you would like to be a part of our growth, then we urge you to consider joining our Sixth Form Leadership Council to help bring the best out of our valued education.



Darcey & Max
Head Students

SUPPORT & GUIDANCE

St Ivo's well established and successful Sixth Form has an excellent academic record and an outstanding pastoral support system.

Tutorial support for our students is one of our greatest strengths at St Ivo. Communication is the key to success and the kind of informal daily contact a tutor offers is designed to guide and nurture individuals in making wise choices, both academically and personally.

Tutors are specifically trained to guide and support their tutees in areas ranging from academic and personal accomplishments to university applications, preparation for the world of work and offering help should any concerns arise.

OUR PROGRAMME INCLUDES:

- Fortnightly one-to-one discussions with your tutor about your progress, career planning, working towards independent study and pastoral issues.
- During the year there will be several tracking points, to check that you are developing both educationally and personally. Tracking is a snapshot of a student's potential and predicted grades, work ethic, homework and organisational skills. Together with your tutor you can then create a personalised action plan to enhance your progress. These tracking points are then available on Bromcom.
- Year 12 have 1 mock exam period and Year 13 have 2 mock exam periods during the year.
- Twice yearly parent/carer evenings in Year 12, one parent/carer evening in Year 13 alongside individual parental consultations when required.
- Personal development covering topics such as driver safety, sexual health, mental wellbeing and managing your finances.
- Information on gap years, studying abroad and working abroad.
- Close links and liaison with Cambridge and Oxford University, Anglia Ruskin and Lincoln University and many others, all of whom have an input into our information, advice and guidance programme.

Alongside the Head of Sixth Form, to support your development, we have a Deputy Head of Sixth Form, a team of 9 form tutors and we also have a Sixth Form administrator.

In all areas of Sixth Form life, students are encouraged to develop and take responsibility for their own learning.

BEYOND THE IVO

We are a comprehensive Sixth Form. Whilst the majority of our students go on to study at university, some go to FE College, begin apprenticeships, or start work. Tutors and pastoral leaders are trained in guiding you along the path that is right for you.

St Ivo Academy Sixth Form currently works with Form the Future who offer bespoke careers advice to our students. We also subscribe to Morrisby which provides a wealth of advice for both university admissions and alternative routes such as apprenticeships. Our tutors are trained to support the aspirations of all students and offer individual, tailored support. We have specialist support for Oxbridge applicants and those students who intend to apply for highly competitive courses or apprenticeships are offered mock interviews with external specialists. Throughout the year we run a variety of events that support both research and applications, including trips to both the National Apprenticeship fair and the UCAS exhibition.



FINANCIAL SUPPORT

As a state school we have access to the 16-19 Bursary Fund Scheme. Students who are suffering financial hardship, who come from low income families, or who are in care are entitled to additional monetary support. The bursary money can be used towards the costs of education, including textbooks and revision guides, specialist equipment, trips and any exam related fees. The school supports and advises on these applications, making sure that the students who need extra help get it in a timely manner. The application form can be found on our website, and students who wish to know more are encouraged to talk to their tutor or head of year.

Students in the sixth form value the expertise of their teachers and the quality of the instruction they receive. They produce detailed written responses to difficult and abstract concepts. Students are well supported to learn the subject knowledge they need.

Ofsted, April 2024

YOUR SIXTH FORM DAY

TIMETABLES

We expect all students to dedicate 5 hours per week per subject to additional study, outside of directed homework and classwork. Subject teachers will provide guided tasks and activities to help support this.

Below is an example of a student's timetable. Students every morning (apart from assembly day) will have time with their tutor and will use supervised study time during this to keep on top of work and research. During the week students will also be involved in an enrichment activity and complete a PD/Careers/Study Skills lesson .

Students will also have at least 2 timetabled supervised study sessions each week in the understudy, where a member of staff will be available to support them.

	Registration	P1	P2	P3	P4	P5
Monday	Supervised study	Psychology		Maths	History	History
Tuesday	Supervised study	Psychology	Psychology	Supervised Study	History	
Wednesday	Enrichment		History		Maths	Supervised Study
Thursday	PD/Careers/ Study Skills	EPQ	Maths	Psychology	Maths	
Friday	Assembly		Maths		Psychology	History

EXTENDED STUDY HOURS

Sixth Formers are required to work more independently, and as such must do extra preparation for each lesson in order to achieve highly. Our Resource Centre, Silent Study rooms and Understudy areas are all open 8am to 5pm daily, with access to state of the art computers and up to the minute texts, journals, periodicals and articles.



TEXT BOOKS

All subjects have reading lists, indicating recommended and additional reading. The recommended texts will be provided in lessons and The Study. Students are advised to purchase their own copies if they wish to annotate them and/or take them out of school. The school has a small bursary fund set aside to help those students most in need of financial assistance.

FACILITIES, CLUBS, SOCIETIES & VOLUNTEERING

FACILITIES

Sixth Form students have their own purpose-built Sixth Form Centre called The Keep which is typically open from 8am-5pm daily.

The Keep includes a Common room for socialising, the Understudy for quiet work, and 2 silent study rooms. Some departments across the school also have specialist Sixth Form rooms that are dedicated to level 3 study.

Sixth Formers enjoy open access across all ICT suites, the Resource Centre, and the school Canteen (which can be accessed outside of break and lunch times). We are lucky to be able to use the nearby Recreation Centre at reduced rates which offers excellent sports facilities.

CLUBS AND SOCIETIES

There are a variety of extra-curricular activities designed for Sixth Formers to help enhance their knowledge in different fields of interest.

- STEM & Competitive applications
- The Faculty Club Football tournament
- Arts & Crafts
- Book Club
- Senior Choir
- Competitive Netball & Football teams and recreational sport
- Theatre Club and school productions
- Chess Club
- Tennis Club
- Debating
- Foreign Films

Not found anything that appeals? Why not start your own club or society? The Sixth Form committee would love to assist and support you in this!

SIXTH FORM COUNCIL

Each year, students are encouraged to apply for the Head Student positions. After a rigorous screening and interview process, two students each year are appointed by the Sixth Form team and Principal. One of their primary responsibilities is to chair the Sixth Form Council, which is made up of representatives across the Sixth Form community. The Council represents the passions and interests of the wider Sixth Form and each Council member is encouraged to establish and lead their own committee.

The Council works closely with the House system and the House Captains automatically have a seat on the Council. Through the House system our Sixth Formers are able to support students further down the school, developing positive relationships with KS3 and KS4 and acting as aspirational role models.



VOLUNTEERING

All students are expected to designate a proportion of their study periods to Personal Development and Contribution (PDAC). This includes completing supporting qualifications, volunteering in the community, and supporting younger students in KS3 lessons across the school.

EXPECTATIONS

SIXTH FORM LEARNING AGREEMENT

As part of our commitment to students, both students and their tutors are asked to sign the Sixth Form Home/School Learning agreement. The agreement states that students have the right to expect high quality lessons, effective exam preparation, and guidance and support from their tutor. In return, we expect our students to be punctual, hardworking, timely, and assertive.

ABSENCE

Students are expected to maintain attendance above 96%. If a student is ill or unable to attend school due to exceptional circumstances, we expect contact from home stating the reason for absence. If a student knows of an upcoming absence, then a 'request for authorised absence form' should be completed and signed by a head of year. Reasons for authorised absences include university open days, interviews or auditions, or urgent medical appointments that cannot be made outside of school hours.

IDENTIFICATION BADGES

All sixth form students must wear lanyards at all times whilst on the school premises. These lanyards act as identification and will also be activated to operate the entrance gates during the school day. This is part of our safeguarding procedures. Students also must use them to tap in/out when arriving at school each morning and then when leaving and re-entering the school site during the day.

DRESS CODE

We expect our students to dress practically and appropriately. Some subjects will have specific dress codes that are in place because of health and safety considerations. In general, we ask that students avoid clothes that would be considered inappropriate in a relaxed office environment. If a student's attire does not meet the sixth form dress code, they will be asked to return home and change.

The dress code is available on the school website.



ENTRY REQUIREMENTS

All students who wish to join St Ivo Academy Sixth Form must satisfy the entry criteria by gaining the necessary minimum levels/grades required for their choice of subjects.

FOR ALL COURSES

Students are offered places on the basis of their predicted levels/grades. If you achieve better GCSE levels than anticipated, then subjects chosen can be reviewed in the light of your higher performance. Conversely, if you don't achieve the predicted grades then you must arrange a meeting with the Sixth Form team before beginning Sixth Form studies.

GENERAL ENTRY REQUIREMENTS

5 5's Including English and mathematics unless specific subject criteria differ.

Some subjects also have their own specific entry requirements which are outlined clearly on each of the subject pages within this document.

Students who haven't achieved a level 5 or better in GCSE English or mathematics may have to retake these subjects.

(Exceptions may be considered for students who very narrowly miss out on either the English language **or** mathematics criteria).

To study a subject at Level 3 you must have also received at least a grade 5 in that subject at GCSE level, if studied. Some subjects require a grade 6; please check individual subjects for details.

If a particular subject is oversubscribed, and the Academy does not have the available resources to timetable another class for that academic year, then the following oversubscription criteria will be used:

- Students who achieve the highest grades in that particular subject will be allocated places first.
- Where there is a tie, students with the highest average grades across all their grades will be allocated next.
- If there is still a tie, students with the highest average grade between English language and mathematics will be allocated next.

Students must select subjects using the subject block sheet which can be found on the sixth form page of the school website to ensure that their options do not clash.

HOW TO APPLY

We know that deciding upon your post-16 choices is an important decision and we are here to support you in understanding the opportunities available at St Ivo Academy Sixth Form, and also through the application process. We welcome applications from students in St Ives and beyond.

Applications to St Ivo Academy Sixth Form are via the MyChoice16 platform www.mychoice16.co.uk

THE APPLICATION PROCESS

Log into your MyChoice16 account and choose 'My Applications' from the options. If you haven't yet started an application click on the 'Start a new Application' button, otherwise click on the 'continue' button next to the application you want to work on. This page allows you to access all the sections of your application and indicates your progress in each section.

If this is your first application and you haven't completed your *Profile Template* you will need to complete all sections first. For additional applications, your profile details will have been saved and just the 'Course Choices' will need completing.

Your qualifications will be uploaded by the school, you will not be able to amend them - so you can skip this section. The reference will be added by your form tutor.

Complete any additional fields or checkboxes and click the 'Send Application' button to send your application.

Your application will now be at the next status (*Sent, Schools Hold*). Your school will then check your application is suitable and meets the requirements. You may be asked to discuss this with a teacher.

Once your application is sent it is your responsibility to monitor the progress of your application and respond to any notifications you have been sent.

If you meet our entry criteria we will invite you for interview, prior to potentially offering you a provisional place.

TIMELINE FOR APPLICATIONS

October	October	October to January	January	February/March
Issue of Sixth Form Prospectus and launch of the Year 11 programme	Open Evening for students and parents/carers of prospective Year 12s MyChoice16 opens	Information, advice and guidance given by subject teachers and pastoral team to prospective students Assemblies led by the Sixth Form team	MyChoice16 application deadline	Interviews with prospective students
March	May/June	August	September	
Conditional offers made to students	GCSE examinations	GCSE results Results clinic & guidance meetings if required	Signing on day for new students	



A LEVEL
Edexcel 9FA0

ART

Assessment

60% Component 1
40% Component 2

Entry Requirements

5 5's including English and
4+ in maths

If Art studied at GCSE grade 5+

Subject Lead

Andrew Gower
Andrew.Gower@astreastivo.org

This course is for students who love art, and who want to develop their intellectual, imaginative, creative and intuitive powers, alongside aesthetic understanding and critical judgement.

Students will learn to understand the interrelationships between art and design and develop an awareness of the contexts in which they operate. You will also increase knowledge and understanding from both contemporary and the historical viewpoints. Complementary subjects include Textiles, Design Technology, as well as humanity subjects such as English Literature or History. Many students go on to Art Foundation courses before pursuing Art related courses at university or the world of work.

The A level course consists of two components, both teacher assessed and externally moderated. Component 1: Personal Investigation and Component 2 : Externally Set Assignment. There will be opportunities to visit galleries and printing workshops locally and further afield.

A LEVEL



"From the beginning of A level Art, I feel not only have I grown in technical ability, but thanks to the guidance and support of our teachers I have grown in confidence and developed skills I can apply in everyday life."

A LEVEL
AQA, A2(7402)

BIOLOGY

Assessment

100% Exam
Plus a practical endorsement

Entry Requirements

General entry requirements
on page 9

Grade 6+ in GCSE Mathematics

Grade 6+/6+ including Biology in
GCSE Combined Science or two
grade 6+ including Biology in
Triple Science

Subject Lead

Dr Lucy Smith
Lucy.Smith@astreastivo.org



Biology is an eye-opening subject to study that allows you to cover a wide range of interesting and engaging topics.

You will develop your skills in thinking about the activity of your body and all the incredible organisms in the world around you. As well as the theory, there is the important experimental aspect of the course, assessed through a variety of engaging practicals and logged in a lab book. We are one of a select number of schools where you will get the opportunity to actually make recombinant plasmids (normally a university experiment) rather than just learning about it.

Biology is an excellent subject to have if you would like to be involved in pharmaceuticals, physiotherapy or ecology; if you hope to go to university to study Medicine or Psychology; or if you wish be involved in caring, medical or sports professions later on. Complementary subjects include Chemistry, Sports, Psychology, Geography and Maths.

To have the widest possible choice in future, especially if you wish to study science at university, you should consider taking two science A levels. Most university courses count Mathematics, Geography or Psychology as a second science.

"Biology is fun and interesting and gives us the opportunity to try new and exciting challenges."

A LEVEL
AQA 7132

BUSINESS STUDIES

Assessment

100% Exam

Entry Requirements

5 5's including English and
4+ in maths

Subject Lead

John Burniston
John.Burniston@astreastivo.org



If you want to know more about how businesses make decisions, solve problems and earn profits, then A level Business Studies is for you.

Business Studies gives you the opportunity to learn about strategic decision-making, together with functions and roles of business activities such as marketing and finance. An interest in current affairs is essential, together with a willingness to learn and apply business models and ideas to a variety of contexts.

The course focuses on business functions, external influences and strategic decision-making, and is assessed by three examinations at the end of Year 13. A level Business Studies will allow you to develop your skills of research, communication, analysis and evaluation, all of which prepare you well for higher education. This subject works well with Economics, Philosophy, Maths, English and Politics.

"It is exciting to study the models and theories which we then see real world businesses using. I particularly enjoy business strategy in Year 13 because we study how companies such as Apple operate"

A LEVEL
AQA, 7404, 7405

CHEMISTRY

Assessment

100% Exam
Plus a practical endorsement

Entry Requirements

General entry requirements
on page 9

Grade 6+ in GCSE Mathematics

Grade 6+/6+ including Chemistry
in GCSE Combined Science or
two grade 6+ including
Chemistry in Triple Science

Subject Lead

Dr Donna Squires
Donna.Squires@astreastivo.org

Are you a future medic, vet, engineer, biomedical scientist or pharmacist? If so Chemistry is for you!

Although challenging, the A level Chemistry course enables you to study areas such as drug synthesis and analysis, reaction mechanisms and chemistry of some biological compounds. There are opportunities to take part in master classes at university laboratories. Students also have the chance to take part in prestigious competitions and gain Olympiad awards from the Royal Society of Chemistry.

The course comprises topics within the areas of physical, inorganic and organic chemistry, building on GCSE components. The required practical element of the course develops skills in all areas. A minimum of 12 experiments are completed, recorded and analysed. Complementary subjects include Biology, Physics, Geography and Maths.

To have the widest possible choice in future, especially if you wish to study science at university, you should consider taking two science A Levels. Most university courses count Mathematics, Geography or Psychology as a second science.



"The world is full of wonders, but Chemistry makes them more spectacular."

A LEVEL
OCR H446

COMPUTER SCIENCE

Assessment

80% Exam
20% Coursework

Entry Requirements

General entry requirements
on page 9

Grade 6+ in GCSE Computer Science

Grade 6+ in GCSE Mathematics

Subject Lead

Steven Hill
Steven.Hill@astreastivo.org

Computer Science is about how we can use computers to represent, store, communicate, manipulate, understand and make use of information.

At Advanced Level, you will build upon a basic understanding of computing that will then focus on algorithms, programming, and computer systems. You will gain an extremely relevant qualification that will open doors to more advanced study at university, and possibilities for computer-related apprenticeships in industry.

The aims of this qualification are to enable learners to develop a sound understanding of: systems analysis (including computational thinking, abstraction, decomposition, modularisation), systems design (including object design, algorithm design, understanding data types and data exchange), creating systems and systems application (including network and internet technologies, legalities and culture).

Assessment comprises: two written exams - Component 1 Computer Systems, and Component 2 Algorithms and Programming - each worth 40%, and coursework (an independent project) that is worth 20%.



"Computer Science is an important A Level for me because it can be a gateway into many other jobs, owing to the influence that computers have on our daily lives"

A LEVEL
EDEXCEL 9DR0

DRAMA & THEATRE

Assessment

40% Written Exam
40% Devising
20% Performing Scripts

Entry Requirements

5 5's including English and
4+ in maths

If Drama studied at GCSE
grade 5+

If student has not studied
GCSE Drama, an interview
ascertaining their practical
experience would be required

Subject Lead

Jamie Smith
Jamie.Smith@astreastivo.org



This is a great choice if you have an interest in how theatre-makers create meaning for audiences.

The course will allow for scholars to:

- develop and apply an informed, analytical framework for making, performing, interpreting and understanding drama and theatre
- understand the place of relevant theoretical research in informing the processes and practices involved in creating theatre
- develop an understanding and appreciation of how the social, cultural and historical contexts of performance texts have influenced the development of drama and theatre
- understand and explore the practices used in 21st-century theatre making
- experience a range of opportunities to create theatre, both published text-based and devised work
- participate as a theatre maker and as an audience member in live theatre.

This course will prepare you well for higher education and richly equip you for a wide range of career choices. Ex-students include TV presenters, puppeteers, midwives, business owners and the a previous Mayor of St Ives. Complementary subjects include English Literature, Dance, or indeed any subject since Drama related skills are highly sought after in every career.

"University admissions tutors recommend Drama and Theatre A level as it broadens the range of academic and life skills that you need. I like it because it's challenging and fun too"

A LEVEL
AQA 7136

ECONOMICS

Assessment

100% Exam

Entry Requirements

General entry requirements
on page 9

Subject Lead

John Burniston
John.Burniston@astreastivo.org

If you have an enquiring mind and want to know how individuals, firms and governments make decisions that affect all of our lives, then A level Economics provides an excellent framework for understanding these issues.

Economics underpins our lives – from questions such as “Can we afford a free NHS?”, to “How come some business owners earn million pound bonuses?” An interest in current affairs is essential, together with a willingness to learn and apply economic models and ideas to a variety of contexts. We visit the Bank of England and there are opportunities to enter the Royal Economics Society Young Economist essay competition.

The course is 100% examined and comprises three components, two of which will focus on micro and macroeconomics, with the third being a synoptic paper. A level Economics will allow you to develop your skills of research, communication, analysis and evaluation, all of which will prepare you well for higher education. A level Economics works well with Business Studies, Philosophy, History, Maths and English.



"Economics will help me in the future by giving me a further understanding of how the 'real world' works"

A LEVEL
OCR H472

ENGLISH LITERATURE

Assessment

80% Exam
20% Coursework

Entry Requirements

5 5's including English and
4+ in maths

Grade 5+ in GCSE English
Literature

Subject Lead

Jane Panter
Jane.Panter@astreastivo.org

Students who love to read and delve into the meaning, style and contexts of language; those who are not afraid to think deeply and work independently; those who enjoy discussion and debate about literature and how to interpret it.

This course is demanding yet varied and very enjoyable. Students will develop their writing, analytical and reading skills.

The course is 80% examined with 20% non-examination assessment. There are a number of texts to study including novels, short stories, plays and poetry. The earliest texts pre-date Shakespeare and the most modern are only just published.

This well-established and popular A level course has a good reputation with universities and is a very useful qualification to have for any kind of humanities degree. Employers, too, respect the rigour and quality of the course. The choice of post-graduate options is very wide indeed. The subject provides a firm supportive basis for any course or employment requiring language skills of any kind.



"The best thing about English is that you are encouraged to develop your own ideas. Discussion is really important and I think this prepares you for university"

AS LEVEL
AQA 7993

EPQ

(Extended Project Qualification)

Assessment

100% Coursework

Entry Requirements

General entry requirements
on page 9

Subject Lead

Paul Cook
Paul.Cook@astreastivo.org

The EPQ is an AS qualification which is taken in addition to your other A level courses.

This allows you to research almost any topic of interest, an A level subject, something that you enjoyed at GCSE, or an outside interest. Your project will follow one of two routes. Most students produce a 5,000 word report answering an essay question: e.g. "To what extent can electric cars solve global warming?" Others choose to produce an artefact with a smaller report to explain the research process. Students have made a drum, a computer logic gate, a story in the style of Roald Dahl.

Those thinking of applying to university should take EPQ. It demonstrates an ability to work independently, and can be used in your Personal Statement to show passion for learning outside of lessons. Additionally, some universities can offer reduced entry requirements for students who have undertaken the EPQ. Please check individual universities for details.

You will have 1 lesson per week throughout the year. Between September and January, you will work with your supervisor as a group to identify your individual topics and learn how to research independently. From February onwards you will receive one-to-one tutorials. You will complete your product (Report or Artefact) in June and then conduct a presentation to staff and fellow students outlining your EPQ journey.



"The EPQ is the perfect way to prepare for university. I developed some important skills and really enjoyed the opportunity to research a topic of personal interest"

A LEVEL
EDUQAS A670QS

FILM STUDIES

Assessment

70% Exam
30% Coursework

Entry Requirements

5 5's including English and
4+ in maths

If Film studied at GCSE grade 5+

Subject Lead

Jane Panter
Jane.Panter@astreastivo.org

If you have a real enthusiasm for film as an art form, and you are excited by watching, reflecting and analysing films then Film Studies is the course for you.

The course also offers you the opportunity to become a filmmaker, learning the directors' craft and producing your own short films and screenplays. In addition you could apply your skills outside the classroom as a Film ambassador or member of Film Club.

You will study a broad range of films: mainstream and independent American cinema from the past and present, British film, global cinema, documentary, experimental and silent film. For the non-exam assessment element (30% of the course) you will study short film making and use this to inform your own work. A level Film Studies equips you with both critical thinking skills and creative practical skills. The course works well with English Literature, Photography, Art, Theatre Studies and Ethics.



"I loved A-level Film - it was hands down my favourite part of school. The teaching, the subject and the people combined to make school feel not just worthwhile but weirdly special"

A LEVEL
AQA 7652

FRENCH

Assessment

100% Exam

Entry Requirements

General entry requirements
on page 9

Must have sat higher paper in
GCSE French gaining Grade 6+

Subject Lead

Annalisa Champley-Potter
Annalisa.Champley-Potter@astreastivo.org

If you are interested in improving your linguistic skills and developing a greater understanding of how French speaking society has been shaped socially and culturally, and how it continues to change, then French A Level is for you.

French fosters a range of transferable skills including communication, critical thinking, research skills and creativity. You will study a range of contemporary social issues, including technological change and the diversity and the benefits it brings. You will also be looking at French speaking artistic culture, including music, cinema and political power, and its impact on youth culture. There will be opportunities to take part in trips abroad and experience university lectures. A foreign language A Level will complement and enhance a whole variety of subjects, in particular students wishing to apply to Russell Group universities will benefit from having a language A level alongside another facilitating subject, such as: Mathematics, Further Mathematics, English Literature, Physics, Biology, Chemistry, Geography, and History. The course is comprised of two written papers as well as a speaking exam based on individual research project of your choice.



"French A Level is a challenging but satisfying course - I have really enjoyed this year. Having a small group gives a great opportunity to learn well in lessons"

A LEVEL
AQA 7357

FURTHER MATHEMATICS

Assessment

100% Exam

Entry Requirements

General entry requirements
on page 9

Grade 8+ in GCSE
Mathematics

Subject Lead

Georgina Sargent
Georgina.Sargent@astreastivo.org

Further Mathematics is a course designed for able students who want to extend their mathematical knowledge.

The course builds on from A level Mathematics and allows you to tackle a wider breadth of work and some more demanding topics. You will focus very strongly on Pure Mathematics. There are also lessons on Statistics and Decision Mathematics throughout the course. The A Level examination consists of two exam papers in Pure Maths and two more examination papers in Further Statistics and Decision Maths.

You would be well advised to take Further Mathematics if you are interested in a degree in Mathematics, Economics, Physics, or Engineering. However, the course is also interesting to anyone with a real appreciation of mathematics and wishes to extend their mathematical ability.



"At A level I didn't just learn to understand Mathematics, I learnt to love it"

A LEVEL
OCR H481

GEOGRAPHY

Assessment

80% Exam
20% Coursework

Entry Requirements

General entry requirements
on page 9

If Geography studied at GCSE
grade 5+

Subject Lead

Mark Henry-Cockles
Mark.Henry-Cockles@astreastivo.org

If you are interested in a dynamic, challenging and highly topical course, focused on developing a deeper understanding of our world and the physical and human processes that shape it, then A Level Geography is for you.

This course is for critical and reflective learners. You will study the complexity of people-environmental interactions, contemporary issues and the values, attitudes and circumstances impacting on people-place relationships. You will also develop qualitative and quantitative approaches to geographical enquiry. As well as numerous fieldwork experiences you will be given opportunities to take part in optional lectures. There is also the opportunity to become a Sixth Form Geography ambassador. The course comprises of three examined units and an independent investigation on a topic of your choice. Geography enables you to become a more informed 21st century citizen with a better understanding of the contemporary challenges facing our world today. The course complements many other subjects, particularly: History, Politics, English Literature and the Sciences.



"I'm really glad I have taken A level Geography - being both an arts and a science subject means it has given me far greater choice and flexibility when applying for a university course"

A LEVEL
AQA 7662

GERMAN

Assessment

100% Exam

Entry Requirements

General entry requirements
on page 9

Must have sat higher paper in
GCSE German gaining grade 6+

Subject Lead

Annalisa Champley-Potter
Annalisa.Champley-Potter@astreastivo.org

Interested in improving your linguistic skills and developing a greater understanding of how German speaking society has been shaped socially and culturally? German A Level is for you.

German fosters a range of transferable skills including communication, critical thinking, research skills and creativity.

You will study technological and social change, looking at the multicultural nature of German speaking society. You will study highlights of artistic culture including art and architecture and will learn how Germany's political landscape was formed. There are opportunities to take part in trips abroad and experience university lectures. A foreign language A Level will complement and enhance a whole variety of subjects. The course is comprised of two written papers as well as a speaking exam based on individual research project of your choice. In particular students wishing to apply to Russell Group universities will benefit from having a language A level alongside another facilitating subject, such as: Mathematics, Further Mathematics, English Literature, Physics, Biology, Chemistry, Geography, and History.



"German at A level is definitely a worthwhile subject! Compared to GCSE, the small group size gives you a more enjoyable learning experience. The topics are more varied and lessons are both interesting and entertaining!"

A LEVEL
EDEXCEL 9GCO

GRAPHIC COMMUNICATION

Assessment

Component 1

Personal Investigation
(coursework) 60%

Component 2

Externally set assignment
(ESA) 40%

Entry Requirements

General entry requirements
on page 9

GCSE grade 5+ in Product
Design, Art & Design or
Graphic Communication

Subject Lead

Andrew Gower
Andrew.Gower@astreastivo.org
KS5 Subject Co-Ordinator
Carole Atkinson
Carole.Atkinson@astreastivo.org

This course is suitable for students who wish to progress into product or art and design courses and specialise in an area of interest whilst completing their degree. Some may complete a one year Arts Foundation course, whilst others prefer direct entry into university. Immediate entry into a related work placement is an alternative.

The course aims to develop skills in:

- Formal graphic communication techniques
- Creative, innovative and experimental practice
- Developing ideas from concept to finished product
- Investigation, analysis and critical judgement, knowledge and understanding of both contemporary and historical graphic design and the contexts within which they operate.

Students will need to purchase a range of art equipment/materials for use at home and sketch pads for each component. There will be additional costs for visits and workshops of approximately £50 per year.

Graphics opens up an array of opportunities including graphic design, advertising, product design, technical illustration, printing, package design, interior design and architecture to name just a few possibilities.



A LEVEL
OCR H505

HISTORY

Assessment

80% Exam
20% Coursework

Entry Requirements

General entry requirements
on page 9

If History studied at GCSE
grade 5+

Subject Lead

Dr Michael Craig
Michael.Craig@astreastivo.org

A level History is bursting with thought provoking topics including interesting individuals such as Stalin, William Pitt the Younger and Michael Collins.

The study of A level History requires you to weigh up differing points of view, to consider the perspectives of a range of authors, to critically analyse information and to debate with your peers. You will be expected to read around the subject and develop independent learning skills.

History works well with Politics, Geography, English Literature and Law and may lead into careers in journalism, media, law, the civil service, teaching and many more as the skills you learn in History will be useful whatever your career path. Our European and British History course is taught by specialist staff and supported by online resources. 20% of the course is coursework.



"When I was applying for university, History A level was seen as a well respected subject"

A LEVEL
AQA 7162A

LAW

Assessment

100% Exam

Entry Requirements

General entry requirements
on page 9

Subject Lead

James Lake
James.Lake@astreastivo.org

Whether you want to be a leading barrister, a human rights campaigner, or just want to know how the justice system works, Law A level could be subject for you!

In law we study the English legal system and three areas of law: criminal law, tort law, and contract. You don't need any specific GCSE's and law works well with any other combination of A level subjects.

In criminal law we study murder, manslaughter, and other offences against the person, as well as theft. Tort law helps us understand if we can sue someone if we're hurt due to someone else's negligence, or if they are causing a nuisance. Contract law is the legal underpinning of our civilised society; if we couldn't make binding promises to each other life as we know it would fall apart!

We also study legal philosophy, asking deep questions about justice, fairness, and morality. We will run a trip to Parliament and the Supreme Court in London, to see where our laws are made and ruled upon.

The course is 100% examined; our lessons are full of real life cases and lively discussions!



"The visit to the Old Bailey in particular inspired me to study law at university and to pursue a career as a solicitor"

A LEVEL
EDExcel 9MAO/01/02/03

MATHEMATICS

Assessment

100% Exam

Entry Requirements

General entry requirements
on page 9

Grade 6+ in GCSE Mathematics

Subject Lead

Georgina Sargent
Georgina.Sargent@astreastivo.org

This demanding yet popular course focuses very strongly on Pure Mathematics, Algebra, Graphs, Equations and Trigonometry.

In addition you will be introduced to Calculus. There are also lessons on Statistics and Mechanics, building on knowledge from GCSE. You will also be taught to read and comprehend mathematical arguments and construct proofs.

The A Level examination consists of two exam papers in Pure Maths and a third paper in both Statistics and Mechanics. Mathematics A level is well respected at all top universities, even if you are applying for a course without substantial mathematical content.

If you have an interest in studying Economics, the Sciences or Engineering, then Mathematics is usually viewed as essential, with Further Mathematics.



*" Maths is coooooool - Einstein.... well that is what I would like to believe he said!
But truly maths is indeed cool, and I believe it holds great importance with students and their future"*

A LEVEL
EDUQAS A660PA

MUSIC

Assessment

40% Exam
60% Coursework

Entry Requirements

General entry requirements
on page 9

If Music studied at GCSE
grade 5+

If not studied ABRSM grade 5
theory and subject to a practical
audition

Subject Leads

Jamie Smith
Jamie.Smith@astreastivo.org
Deborah Miller
Deborah.Miller@astreastivo.org

A level Music is for you if you are creative, passionate about music and its place in the world, and keen on continuing a practical approach to education.

A level Music lessons continue to combine practical and theory work at a high level, with a course that is stimulating and varied in its content. The A level course offers academic rigour as well as opportunities to enjoy working with your peers practically. You will be key to inspiring younger musicians to develop their skills, participating in school showcases and expanding your experiences by attending relevant live music events.

The course is comprised of 60% coursework in Performing and Composing, with the option of each student weighting one of the two more heavily depending on your strengths. There is also a final listening exam worth 40%, covering Areas of Study based on the development of the Symphony, the history of Musical Theatre, and 20th Century Music styles. You will study and analyse set musical genres, learn in detail how to write complex music in Classical and Popular styles, and perform regularly.

Music is an ideal accompaniment to other arts subjects, languages or humanities, and also provides a good contrast to Maths/Sciences. Hundreds of academic Music degrees are offered nationally, as well as Music college opportunities.



"If you have an interest in music, you will learn so much and so many opportunities will open up to you. If you have a passion for music, take this course"

A LEVEL
OCR H573

PHILOSOPHY, THEOLOGY & ETHICS

Assessment

100% Exam
Unit 1: Philosophy of Religion
(33.33%)
Unit 2: Ethics (33.33%)
Unit 3: Developments of Religious
Thought: (33.33%)

Entry Requirements

General entry requirements
on page 9

If Religious Studies studied at
GCSE grade 5+

Subject Lead

Karen Seekings
Karen.Seekings@astreastivo.org



The course is ideal for students who have a keen interest in the world around them and our place in it.

We focus on the ability to consider topics that relate to the real world, and to learn how to justify our arguments as well as evaluating and critiquing a variety of different approaches to the questions and dilemmas that we study.

Course content

Philosophy of Religion - You will look at some of the biggest questions that humans have about reality, God and the beginnings of life and our universe. We will study philosophers such as Aristotle, Plato, Irenaeus, Wittgenstein, and many others.

Ethics - You will study ethical theories of a number of philosophers and look at how they can be applied in the world to real life situations. For example, euthanasia, business ethics and sexual ethics. Ethical theories we look at are Utilitarianism, Kantian Ethics, Situation Ethics, Natural Law.

Developments of Religious Thought - This is looked at from the perspective of Christianity as well as other religions. This will include the exploration of religious beliefs, values, teachings and how they have developed over time, and religious responses to challenges and significant contemporary social issues. Topics include Death and the afterlife, Gender, Liberation Theology etc.

"I like the way it challenges my own beliefs and ideas and forces me to think about why I hold them"

A LEVEL
EDEXCEL 9PYO

PHOTOGRAPHY

Assessment

60% Component 1
40% Component 2

Entry Requirements

5 5's including English and
4+ in maths

Art based or Film GCSE grade 5+

If Photography studied at GCSE
grade 5+

If none, portfolio of 12+
photographs (landscapes,
portraits) NOT holiday
photographs

Subject Lead

Andrew Gower
Andrew.Gower@astreastivo.org

An exciting yet demanding course, A level Photography aims to develop photographic, creative and intellectual skills along with the ability to analyse contextual references, techniques and processes using written annotation.

The A level Photography course consists of two components, both internally assessed and externally moderated, a thematic practical project and an essay of 1500 – 3000 words which relates to the contextual research within the practical work. Component 2 is externally set and thematically based.

An A level in Photography is excellent preparation for higher education courses in Photography, Illustration, Graphic Design, Animation, and Game Design.

A bridge camera is sufficient but students will not be able to rely solely on a phone camera. All computer equipment and related software is available at the Academy.



"I chose Photography because it changes the way you see 'everyday things'. Suddenly you notice light, shapes, colours, textures. Everything around you looks different when you see the world as a photographer"

A LEVEL
AQA 7582

PHYSICAL EDUCATION

Assessment

70% Exam
30% Coursework

Entry Requirements

General entry requirements
on page 9

Grade 6+/6+ in GCSE Combined
Science or any two grade 6+ in
Triple Science

If PE studied at GCSE grade 5+

PE Contact

Paul Cook
Paul.Cook@astreastivo.org

If you are interested in sport but want to delve deeper into the scientific and sociological aspects of sport then this course offers you that opportunity.

The course focuses on physiological and psychological factors, and socio-cultural, historical and biomechanical effects, and seeks to establish how much impact they have on improving and then optimising sports performance.

70% of the course is examined, 15% is assessed in either practical performance or coaching and 15% is written coursework. Units covered in the course include Applied Anatomy and Physiology, Skill acquisition and Sport and Society.

PE combines well with subjects such as Biology, English Literature, History and Physics. Sports Studies/Sports Science can be studied at undergraduate, Masters and PhD level. Many jobs in the sport and leisure industry are now looking at Sports Studies as an essential background for future development. PE is also an advantage when looking into jobs such as Physiotherapy and Sports Journalism.



"I have thoroughly enjoyed my two years in A level PE. I have learnt how the body functions in sport and as a result improved as a performer"

A LEVEL
AQA A2 7408

PHYSICS

Assessment

100% Exam
Plus a practical endorsement

Entry Requirements

General entry requirements
on page 9

Grade 6+ in GCSE Mathematics

Grade 6+/6+ including Physics in
GCSE Combined Science or two
grade 6+ including Physics in
Triple Science

Subject Lead

Dr Donna Squires
Donna.Squires@astreastivo.org

Are you inquisitive and do you enjoy solving problems using Mathematics? Then Physics is a possibility for you.

A Level Physics is a course that aims to explain why everything works; from a ferris wheel at a fairground to the Quantum theory surrounding the Gold Leaf Electroscope.

The course comprises a series of modules that build upon work studied at GCSE. The aim is to gain a deeper understanding of those topics and develop high level problem solving skills. There is a practical element of the course which requires the completion of 12 experiments that are recorded and analysed in a lab book. Complementary subjects include Chemistry, Biology and Geography. Maths is strongly recommended.

To have the widest possible choice in future, especially if you wish to study science at university, you should consider taking two science A levels. Most university courses count Mathematics, Geography or Psychology as a second science.



"A fascinating subject that I am going to continue with into university"

A LEVEL
EDEXCEL 9PLO

POLITICS

Assessment

100% Exam

Entry Requirements

General entry requirements
on page 9

Grade 5+ in GCSE English Language
or grade 5+ in GCSE History

If Politics studied at GCSE
grade 5+

Subject Lead

James Lake
James.Lake@astreastivo.org



If you are interested in current affairs and the ways in which different views in society are managed, how conflict is resolved and where power is located, then A level Politics is the course for you.

A level Politics is a course for inquisitive minds. Studying Politics will enable you to develop your understanding of the government and politics of the UK and USA, along with all the fiercely debated topics this includes. You will normally get the opportunity to take part in debates, visit the Houses of Parliament and enjoy a programme of visiting speakers. In addition, there will be leadership opportunities in a student-led politics society.

The course comprises of three components, two of which will be on UK Government and Politics, together with political ideas. The third component is about US Politics and a comparison with the UK. A level Politics will allow you to develop your skills of research, communication, analysis and evaluation, all of which will prepare you well for higher education. In Year 12 there will be an opportunity to visit the Houses of Parliament.

This subject works well with Philosophy, History and English Literature.

"At first I was unsure whether I made the right decision choosing Politics. Now I never look back! If you like class debates and current affairs, then Politics is the subject for you!"

A LEVEL
AQA 7205

PRODUCT DESIGN

Assessment

100% Coursework with a 15 hour period of sustained focus under exam conditions

Entry Requirements

General entry requirements
on page 9

If Design & Technology studied
at GCSE grade 5+

Subject Lead

Andrew Gower
Andrew.Gower@astreastivo.org



This course is creative and thought provoking. It is designed to inspire and challenge students to develop their design and practical skills to produce creative, innovative and successful product outcomes.

You will gain a real insight into what it means to be a designer: equipping you with skills for the future and giving you the confidence to succeed in higher education.

You will complete 2 components over the 2 year course.

Component 1 - Personal investigation: 60% of final grade. This component allows students opportunities to generate and develop ideas, research primary and contextual sources, record practical and written observations, experiment with media and processes, and refine ideas towards producing a personal resolved outcome (s). The personal investigation is supported by written material consisting of 1000-3000 words of continuous prose.

Component 2 - Externally Set Assignment: 40% of final grade. This component allows students opportunities to generate and develop ideas, research primary and contextual sources, record practical and written observations, experiment with media and processes, and refine ideas towards producing a personal resolved practical outcome(s) in response to an externally set theme. The final outcome for this component is completed in 15 hours of unaided supervised time.

"The course with its mix of designing and practical based skills encouraged me to continue into a pathway using these things at the end of my course"

A LEVEL
AQA A2 7182

PSYCHOLOGY

Assessment

100% Exam

Entry Requirements

General entry requirements
on page 9

Grade 6+/6+ in GCSE Combined
Science or any two grade 6+ in
Triple Science

Subject Lead

Edith Robinson
Edith.Robinson@astreastivo.org

If you are interested in studying people and the reasons why different people behave the way they do, then Psychology is the course for you.

The Psychology specification introduces students to the broad range of Psychology topics from the ways people influence our behaviours, how the attachments we make as a baby can affect our behaviour as adults, and psychopathology (what is normal/abnormal, depression, OCD and treatment). You will also study research methods.

The second year builds on the first and has options with forensic, schizophrenia and relationships being the current favourites. 20% of the course is science-based and 10% mathematically based and the course is 100% examined. A level Psychology works well with all academic and creative subjects. For career opportunities, the understanding and analysis of human behaviour and experience is relevant to all areas.



"Psychology broadened my thinking - I now have more understanding and empathy for other people"

A LEVEL
AQA 7192

SOCIOLOGY

Assessment

100% Exam

Entry Requirements

General entry requirements
on page 9

Subject Lead

James Lake
James.Lake@astreastivo.org

Sociology is the study of society and human behaviour. It is a social science that aims to understand human behaviour by studying social facts. If you are interested in people and different ways of explaining the world then sociology is the subject for you.

A level Sociology is an engaging course which will interest anyone who is curious about society and the influences that shape us all as individuals and groups. Sociologists have different perspectives on society and these perspectives will influence their theories. Sociologists produce research which strives to inform effective government policy. They seek to understand society and to draw conclusions on how positive changes to society can be realised.

In Sociology you will study Education, the Family, Religion, and Crime. You will come to understand the perspectives of Marxists, Feminists and Functionalists as well as many others.

The course will allow you to develop your skills of analysis and evaluation, as well as your ability to critically assess the validity and application of various research methods. This course works well with many subjects including other social sciences such as Politics, Economics and Psychology.



A LEVEL
EDEXCEL 9TEO

TEXTILES/ FASHION

Assessment

60% Component 1
40% Component 2

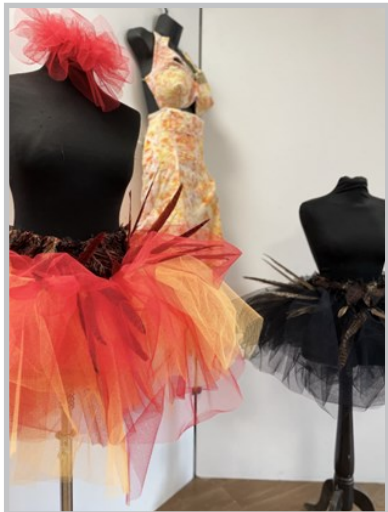
Entry Requirements

5 5's including English and
4+ in maths

If Textiles studied at GCSE
grade 5+

Subject Lead

Andrew Gower
Andrew.Gower@astreastivo.org



This diverse and fascinating course aims to develop your fashion and textile techniques, creative and intellectual skills along with the ability to analyse contextual references, using written annotation.

The A level Textiles and Fashion course consists of two components, both internally assessed and externally moderated, a thematic practical project and an essay of 1500 – 3000 words which relates to the contextual research within the practical work. Component 2 is externally set and thematically based. It is advantageous to be able to work with a sewing machine at home, but it is not essential. It is very important to be equipped with a box of textile tools and materials.

An A level in Textiles and Fashion is excellent preparation for higher education courses in subjects such as Fashion Design, Textiles, Interior Design, Fine Art, Illustration, and Decorative Arts.

There will normally be opportunities to visit galleries and the Stitch and Knit Exhibition.

"The course offers me the chance to learn a wide variety of fashion and textile skills. I can express myself creatively and it exposes me to the possibility of working in the fashion and design related industry"

LEVEL 3

PEARSON BTEC NATIONAL
(EXTENDED CERTIFICATE)

CHILDREN'S PLAY, LEARNING & DEVELOPMENT

Assessment

50% Exam
50% Internal Assessment

Entry Requirements

5 5's including English and
4+ in maths

Grade 5/5 in GCSE Combined
Science or any two grade 5+ in
Triple Science

Subject Lead

Andrew Gower
Andrew.Gower@astreastivo.org

This course introduces study of the early years sector. It is intended as an Applied General qualification, and is equivalent in size to one A level. It supports access to a range of higher education courses, possibly but not exclusively in the early years sector, if taken alongside further Level 3 qualifications or A levels.

There are three mandatory units which cover the following topics:

Children's Development
Communication and Numeracy
Play and Learning

Learners are able to select one optional unit, which will support their progression to specialised degree programmes in the sector, and covers areas such as: physical development, care and health needs; keeping children safe; The Early Years Foundation Stage.

Learners will also need to complete 50 hours' work experience in the sector working with children between the ages of newborn to 7 years.

PEARSON BTEC NATIONAL
(EXTENDED CERTIFICATE)

COMPUTING

Assessment

66% Exam
34% Internal Assessment

Entry Requirements

5 5's including English and
4+ in maths

Subject Lead

Steven Hill
Steven.Hill@astreastivo.org

This course provides students with the opportunities to develop core knowledge, skills and understanding that underpin computer programming and to develop computational thinking and programming skills that will enable them to solve problems.

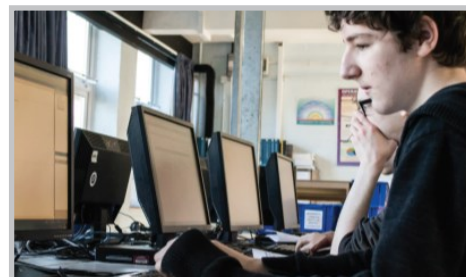
Students explore the critical components that safeguard information systems and data and will acquire knowledge and skills to comprehend and apply security and encryption.

The course comprises the following core, mandatory units:

Programming Fundamentals
Computer Network Security and Encryption
Human-Computer Interaction
Practical Programming

Assessment is summarised as:

External Assessment Administration: 2 x Exams
Internal Assessments : 2 units
Total assessments taken: 4 units



"The practical and work-related focus of this new course makes it both interesting and exciting"

BTEC
EDEXCEL 601/7233/2

PERFORMING ARTS (DANCE)

Assessment

60% Externally Assessed
40% Internally Assessed

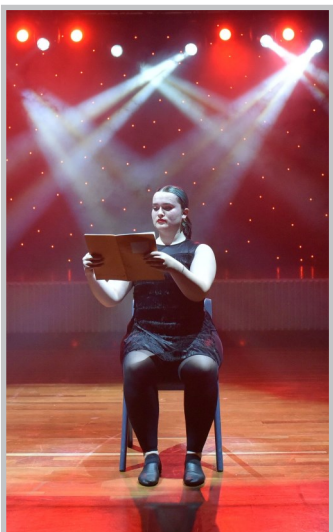
Entry Requirements

5 5's including English and
4+ in maths

BTEC Level 2 Dance qualification
at L2 Pass or better if studied. If
not, experience in dance
required

Subject Lead

Lindsay McAdam



You will develop your technical, performance and choreographic skills, learn set repertoire, and appreciate existing professionals' work.

With this course you will complete two internally marked units and two externally marked units. You will be required to join our extra-curricular activities and perform in our annual production of Ivolution.

There are 4 components to this course – Year 12: Developing Skills and Techniques for Live Performance (internal) and Investigating Practitioners' Work (external); Year 13 covers Movement in Performance (internal) and a Group Performance Workshop (external).

Throughout the course you will have opportunities to work with visiting professional dancers and choreographers, helping you to develop your technical, performance and choreographic skills in relation to the units of study. The course combines both theoretical and practical work and complements your other subject choices while preparing you for future study at university for Dance, Performing Arts or Musical Theatre courses.

"I found this course really interesting as we were given the opportunity to experiment with and explore different styles of dance. This course has further helped my confidence, physical strength and allowed me to gain the knowledge that I need to move towards a career in Dance."

WJEC
EDUQAS 4563QD

FOOD SCIENCE & NUTRITION

Assessment

Year 12 : 50% Exam, 50% Coursework
Year 13 : 100% Coursework

Entry Requirements

5 5's including English and
4+ in maths

Grade 5/5 in GCSE Combined Science
or any two grade 5+ in Triple Science

If Food Technology studied at GCSE
grade 5+

Subject Lead

Andrew Gower
Andrew.Gower@astreastivo.org



If you are interested in food, the relationship between food and the human body as well as practical skills for cooking and preparing food, then Level 3 Food Science and Nutrition is the right course for you.

The course encourages reflective practices, encouraging a creative and innovative approach to learning. The course allows you to develop both academic and practical skills through applied learning. This includes regular practical lessons, working with a wide variety of foods, visits to Borough market and links with local businesses.

Assessment is through written examination, projects and case studies and so is suitable for all learning styles.

Practical lessons take place most weeks and students are expected to bring ingredients from home. The amount per practical can be sometimes be £5, although every effort is taken to keep costs down. In exchange for this cost, a delicious dish which may be served as part of the family meal is produced. It is acceptable to make small quantities if this fits the family budget more appropriately.

Level 3 Food Science and Nutrition is an equivalent to 1 A Level and works well with A level Biology, Chemistry and Maths and also Psychology and the Art subjects.

"Food Science prepared me fully for my university course. It provided a very solid foundation from which to study, you learn all of the practical skills and it's FUN!"

OCR CAMBRIDGE ADVANCED
NATIONAL
(EXTENDED CERTIFICATE)

HEALTH & SOCIAL CARE

Assessment

6 units over the 2 year course:
200 GLH 4 - units of NEA
assessment
160 GLH 2 - unit externally
assessed

Entry Requirements

5 5's including English and
4+ in maths

Grade 5/5 in GCSE Combined
Science or any two grade 5+ in
Triple Science

Subject Lead

Andrew Gower
Andrew.Gower@astreastivo.org

This course is designed for those
interested in health care, social care
and childhood education.

The foundations of the course are built on
developing knowledge of the various job roles in
the health, social and early year's sectors. You will
develop a knowledge of the importance of
safeguarding, effective communication and
caring skills. This course is equivalent to 1 A level.

The course aims to support employment in the
Health and Social Care sector. We cover positive
relationships, equality, diversity and rights of
individuals. Learn about the implication of the
2010 Equality Act, as well as considering safety
and security within the sector. You will go on to
study anatomy and physiology and the long
term impact of physiological conditions, and
nutrition for health. A good level of science
knowledge is required.

You will also learn to research and reflect on
issues affecting the care sector, gaining an
insight into the day-to-day working practices and
how changes made at government level affect
practitioners and clients. This subject is suitable
for students interested in professions such as
nursing, midwifery, social work or counselling
and for students who wish to work with young
children, whether in nurseries or the teaching
profession. You will develop skills and knowledge
for entry to university courses or employment in
the Health, Social Care or Early Years setting.



*"Health and Social Care provides
an understanding of many
different job roles and can
be a template for your
own future career"*

CAMBRIDGE TECHNICAL
OCR INTRODUCTORY DIPLOMA
05409 & 05415

SPORT

Assessment

25% Exam
75% Coursework

Entry Requirements

5 5's including English and
4+ in maths

Level 2 Merit in BTEC/
Vocational Sport if studied

PE Contact

Paul Cook
Paul.Cook@astreastivo.org

This course is for students with a
passion in sport and the sports
industry.

In Year 12 students undertake the Introductory
Diploma in Sport. This comprises of 6 units and is
equivalent to 1 A level. In Year 13 students
complete a further 6 units.

Together with the units studied in Year 12, this
will lead to a Diploma in Sport, which is
equivalent to 2 A levels. All units are centre-
assessed and externally moderated by OCR. The
full qualification and units from this course are
graded as Pass, Merit, Distinction or Distinction
star.

You will cover topics including coaching, health,
fitness, injury, local and national sport and the
sports industry. The course has a strong practical
emphasis and includes work experience visits to
sporting facilities to learn, study and practice
new skills.

You can study Sport Studies/Sports Science or
Physical Education teaching at degree level.
Many jobs in the sport and leisure industry are
now looking at Sports Studies/PE as an essential
background for future development. Sports
Studies is also an advantage when applying for
roles in leisure management, gym instruction
and sports coaching.



*"Put the effort in and you will
reap the rewards!"*



ASTREA: Collaborative working and “inspiring beyond measure”

Astrea’s mission to ‘inspire beyond measure’ reflects the trust’s belief that an exceptional education is rich and empowering beyond the narrow confines of formal examination success.



St Ivo Academy

High Leys, St Ives, Cambridgeshire PE27 6RR

Tel 01480 375400

E-mail office@astreastivo.org or sixthform@astreastivo.org

www.astreastivo.org

facebook.com/StIvoSch