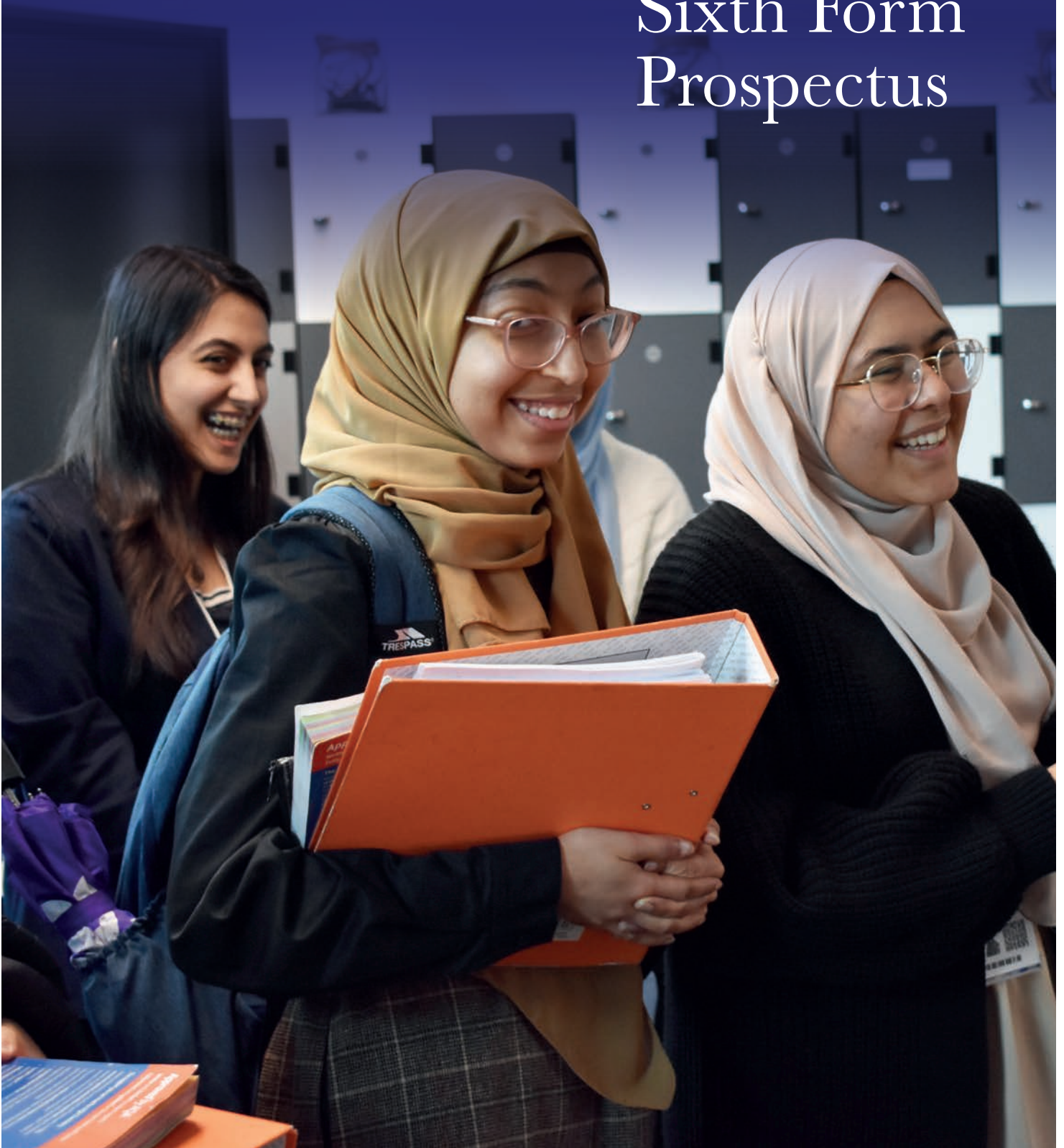
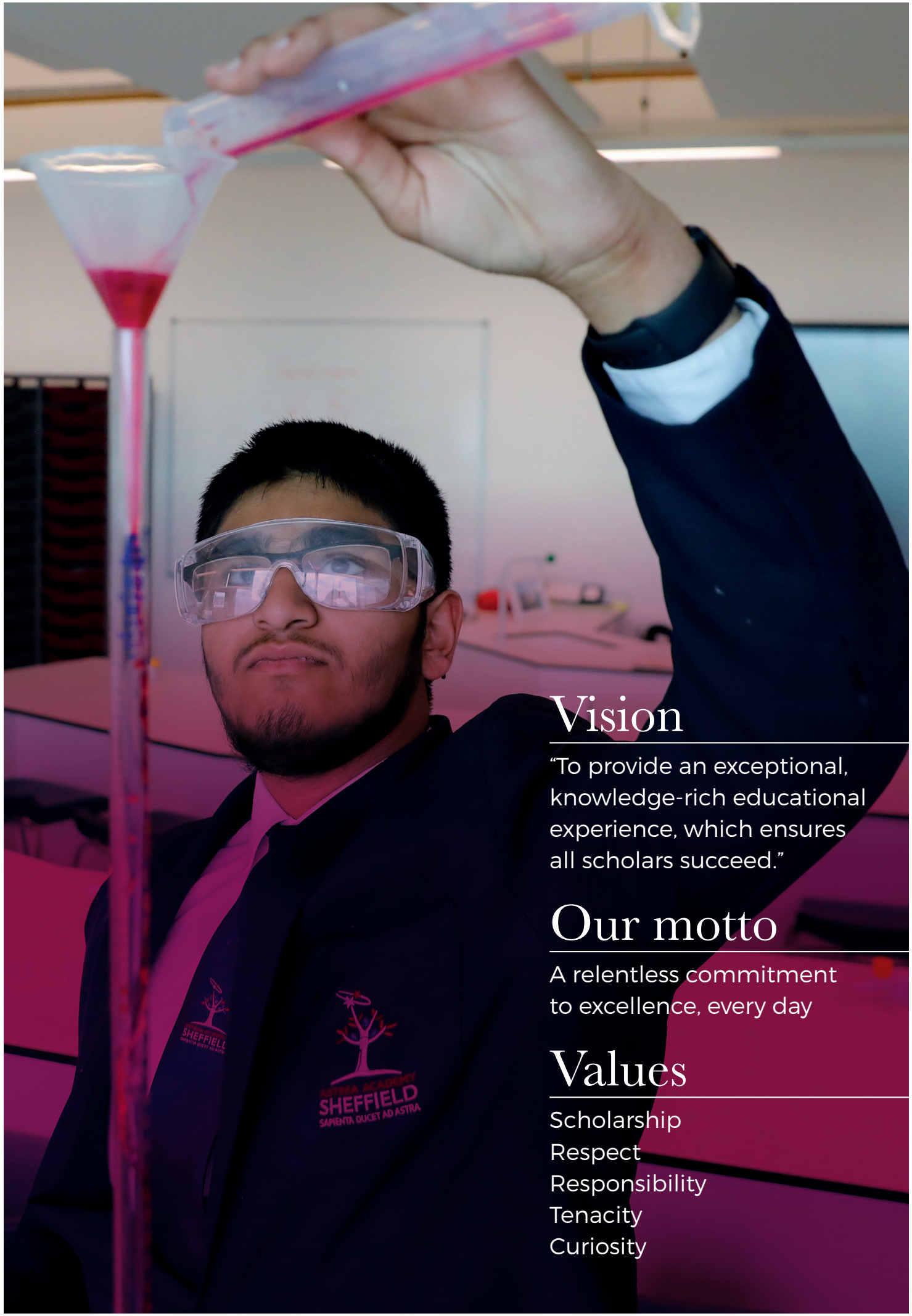


Sixth Form Prospectus





Vision

"To provide an exceptional, knowledge-rich educational experience, which ensures all scholars succeed."

Our motto

A relentless commitment to excellence, every day

Values

Scholarship
Respect
Responsibility
Tenacity
Curiosity

Dear Future Scholars

We are delighted to invite scholars from across the city to apply to our state of the art Sixth Form which brings an offer with a difference – one that is unashamedly academic. The Sixth Form is the first of its kind in the local area. Looking out over the cityscape and countryside, Astrea Academy Sheffield Sixth form is surrounded by impressive horizons. These vistas are an important metaphorical reminder that we are always pushing to reach ambitious goals.



In joining us, you will be taught by inspiring teachers who are experts in their subjects and have a total commitment to ensuring you achieve outcomes that are exceptional. Our smaller class sizes mean you will benefit from individual support. At Astrea, our defining quality is our appreciation of hard work. In joining us, you will be part of a community of likeminded scholars and teachers who are committed to excellence. We take great pride in guaranteeing disruption free learning. We make no apologies for our high expectations because in meeting these our scholars will set themselves apart, ready to apply to competitive and prestigious destinations nationally and beyond.

Our message to you is simple: don't be afraid to aim high. The Sixth Form's programmes of study serve as gateways to the very best destinations, whether you have a clear sense of where next or remain unsure of your next steps. Our application and interview process will ensure that you are no face in the crowd; by September 2024 your aspirations will be ours.

It is an incredible privilege to support young people in their Sixth Form journey. AAS Sixth Form is small by design because we recognise that being known and valued matters. Here at Astrea, scholars will be supported by an experienced Sixth Form team that will ensure you get the regular and targeted support you need and deserve. We look forward to making sure your Sixth Form experience is academically rewarding, memorable and enjoyable. We very much welcome your application.

Best Wishes

Gemma Driver, Head of Sixth Form



An Academic Offer

STEM	Humanities and Arts	Social Sciences	Other
Mathematics	English Literature	Psychology	EPQ
Physics	History	Sociology	
Chemistry	Geography		
Biology	Spanish		
Computer Science	Art		

Admissions Criteria

**Are you on track to achieve excellent grades? Are you hardworking?
Do you want to work with scholars and teachers who share a relentless
commitment to excellence?**

At Astrea Academy Sheffield, our Sixth Formers benefit by joining a community of likeminded scholars who are committed to excellence. With this in mind, we welcome applicants who work hard, are on track to secure high grades and are aiming to secure a place at top universities and destinations. In applying to us, you recognise that achieving excellence requires expert guidance and support.

At Astrea, our admissions process will support you to make wise subject choices that will open doors to exciting degree programmes and brilliant careers.

ADMISSION TO ASTREA ACADEMY SHEFFIELD SIXTH FORM INVOLVES:

- Submitting an online application form on our website – no personal statement required
astreaacademysheffield.applica.com
- Having two short meetings with the Head of Sixth Form about your academic interests and goals
- Achieving the required grades



MINIMUM ENTRY REQUIREMENTS SCHOLARS MUST:

- Achieve 5 grade 5s or above including English Language and Mathematics
- Meet subject specific GCSE entry requirements as outlined below

	Subject	English Lang	Maths	Relevant Subject	Notes/Other Requirements
STEM	Mathematics	5	7		
	Physics	6	7	7 or above in Physics or combined	
	Chemistry	6	6	7 or above in Chemistry or combined	
	Biology	6	6	7 or above in Biology or combined	
	Computer science	6	6		
Humanities & Arts	English Literature	6	5	6 or above in English Literature	
	History	6	5	6 or above in History/ Classics	
	Geography	6	5	6 or above in Geography/ Geology	
	Spanish	5	5	6 or above in Spanish	
	Art	5		6 or above in Art	
Social Science	Psychology	6	6		6 or above in Biology/ combined
	Sociology	6	5		
Other	EPQ				

The Sixth Form Enrichment & Co-Curricular Opportunities

It is incredibly important that the Sixth Form experience is about giving you the opportunity to build and develop personal qualities and skills Scholars at AAS Sixth Form scholars will experience a rich, tailor-made enrichment and co-curricular programme.

The purpose of the programme is to support scholars in broadening their horizons and interests beyond the classroom as well as ready them of applying to competitive destinations. In addition to the offer of ongoing opportunities, all scholars have at least 1 period a week given dedicated to personal development/enrichment. You can expect:

Careers Advisor Access to Level 6 registered career advisor	Cooking classes In house cooking classes every half term.	Uptree A professional network for young people that will support you into WEX opportunities.	HeppHub Higher Education Progression Partnership
Mock interviews Conduct mock interviews with younger scholars. experience mock interviews in school and beyond	Social Action Projects Projects that will be run and led by you. Activities can include volunteering, campaigning, fundraising and mentoring	Elephant Programme Participate in the Elephant Access Programme which supports academically able scholars in top universities	Work Experience Work experience in a professional environment and career area of interest to you
Volunteering Weekly in school volunteering and beyond to ready you	Destination Programme A clear timeline for destination applications so these are carefully thought through and completed early in year 13	"MySuperCurricular" Using the platform 'MySuperCurricular' to learn about work experience, volunteering and find MOOCs	Early Entry Tutoring Dedicated support for early entry (Oxbridge, medicine, dentistry and veterinary science)
CV Workshop Design a CV you can use to capture your qualities and qualifications. Use this to apply for WEX	'See it, Be it' Speakers programme Learn about future options from a wide range of speakers e.g. lawyers, doctors, civil servants, journalists & MPs	The University of Sheffield's access programmes Subjects include: STEM, Dentistry, Law, Humanities, Arts, Social Science, Medicine	Medics Mentors An Aspiring Medics Programme
University Visits Broaden your horizons through our visits to a range of universities	Careers Fair Network and learn about potential careers	Sutton Trust Pathways Law, medicine, engineering, consulting, banking and	Realising opportunities Ongoing support from an organisation dedicated to getting young people into top universities
Morrisby A careers platform for you to research destination and career opportunities and record any steps taken to achieve your goals	Summer Schools Consider applying to UNIQ at the University of Oxford, Cambridge summer schools or partners programme at Newcastle	Employer Insights WEX experiences through the Social Mobility Foundation	NCS Residential activities with the National Citizen Service trust

The Elephant Group

Too many of the UK's leading universities and professions lack the diversity and talent that is present today across the UK. Access to these opportunities is too often determined by school type and family background. The Elephant Group aim to change this. Elephant Access is a programme led by schools, universities, businesses and charities. The EG shared mission is to ensure academically talented non-selective state school scholars have the support, information and experiences they need to access the UK's leading universities and professional jobs. The programme runs across year 12 and 13 and is packed with experiences, events and activities to support you into a 'top third' competitive university.

Destinations

At Astrea, we ensure that our scholars study A Levels that open doors to prestigious universities and apprenticeships in readiness for competitive careers. We know that finding the right destination is a vital step that is exciting but can feel daunting. This process requires careful support and discussion. In studying at Astrea, you will benefit from our expertise in achieving your goals. Scholars will complete our timely UCAS programme to ensure they are ready to submit applications that are outstanding. Our Sixth Form team are trained to ensure applications are second to none. Furthermore, our early entry cohort programme, for those seeking to apply to Oxbridge, Medicine, Dentistry and Veterinary Science, will provide bespoke support to scholars in terms of exam and interview preparation and the rigors of application process.



Supervised Study and the study area

We believe that what you do most is what you do best. Therefore, we want scholars to make sure that the vast majority of their time in school is dedicated to their shared purpose of study at the highest level. A defining feature of our sixth form is the high quality of our study area both in terms of staffing and resources. The Sixth Form Study area has its own library and ICT resources. Furthermore, a member of staff is always available to support scholars whether they need help with time management, research or revision. Our scholars are explicitly taught how to best study which is captured in our mantra that 'we plan, we retrieve, we apply.' As a result our scholars can be smart about how to use their time in the most effective ways. In this 'library quiet' space, scholars can truly thrive as they pursue their studies disruption free.

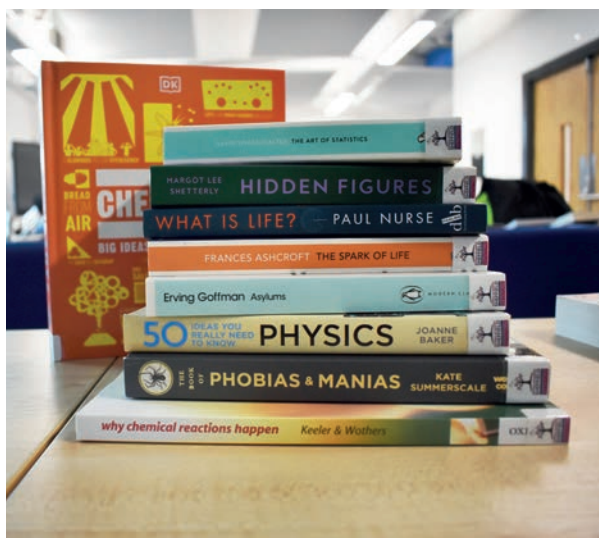
Uplearn

At AAS we make smart decisions for our scholars. That is why we have invested in Uplearn where 97% of the scholars who complete the courses achieve A/A*. Scholars studying STEM subjects use Up Learn to support their learning. Up Learn is a one-stop-AI-shop for independent learning across a whole range of STEM subjects:

• **Mathematics** • **Physics** • **Chemistry** • **Biology** • **Psychology**

Up Learn is grounded in the principles of learning and how to enable every scholar to succeed with the right tools. The courses are tailor made by experts in their field to cover two year specifications, complete with unique exam papers which are exam board approved.

Up Learn also provides: 24/7 online tutor support, quizzes, unit summaries, interactive video lessons and useful exam techniques for scholars to achieve in their chosen field.





Supporting You

You are moving into a phase of life that requires increasing independence and responsibility in order to thrive. We are a smaller Sixth Form by design because we recognise that being known and valued matters. It is important to us at Astrea, therefore, that you will never be a face in the crowd – far from it – you will benefit from attention to detail by an experienced pastoral team. You can expect the following to support your studies:

ACADEMICALLY

- A Personal Development Programme focused on the science of learning and how to best study
- Dedicated tutor support focused on time management and organisational skills
- Supervised study in the Sixth Form Study Area
- Laptop use to support independent study and research
- Library and online resources specifically for Sixth Form studies
- 1:1 weekly academic mentoring support available to ensure successful completion of programme of study
- Stationery resources given at the start of year 12
- Scholar boutique stocked with necessary stationery
- Retrieval resources for each scholar
- Time dedicated every week to plan study schedule

WELLBEING

- Unwavering focus on building healthy habits
- A Personal Development Programme centred on wellbeing
- Unrivalled pastoral support from an experienced and skilled tutor team
- Healthy food, locally sourced and made in house by our Head Chef
- Sixth Form only dining/café space
- Outside balcony dining and social space exclusively for Sixth Formers
- Dedicated Sixth Form only sports and exercise opportunities
- In house counselling service following referrals
- Sign posting to support services

Finance

We have access to the 16-19 Bursary Fund Scheme. Scholars who are experience financial hardship, who come from low income families, or who are in care are entitled to additional monetary support. The bursary money can be used towards the costs of education, including textbooks and revision guides, specialist equipment, trips and any exam related fees. The academy supports and advises on these applications, making sure that the scholars who need extra help get it in a timely manner.



Marcus Lindley (left)
BA Economics,
University of Sheffield

Charlotte Kingdom
BSc Mathematics
with Study Abroad,
University of Bristol

Mathematics (Edexcel)

Entry requirements: GCSE Mathematics grade 7 or above

A Level Mathematics is an interesting and exciting course in which you will gain and work on skills such as problem solving, logic and statistics; skills that will be useful in both your professional life and personal life moving forward. If you enjoy mathematics and want a deeper understanding of the topics you were taught at GCSE, then this course is for you!

WHO IS THIS SUITABLE FOR?

- You want to learn more 'real world' mathematics such as statistics and how people interact with statistics on a day to day basis
- You want to further develop problem solving skills and develop how to use critical thinking
- You want to deepen your understanding of the application of mathematics in the sciences

WHAT WILL I BE STUDYING?

Pure Mathematics – Proof, Algebra and functions, Coordinate geometry in the (x, y) plane, Sequences and series, Trigonometry, Exponentials and logarithms, Differentiation, Integration, Numerical methods.

Statistics and mechanics – Statistical sampling, Data presentation and interpretation, Probability, Statistical distribution, Statistical hypothesis testing, Quantities and units in mechanics, Kinematics, Forces and Newton's laws, Moments.

HOW WILL I BE ASSESSED?

You will be assessed at the end of Year 13

Paper 1 – Pure Mathematics, 2hrs, 100 marks, 33.33% of the qualification

Paper 2 – Pure Mathematics, 2hrs, 100 marks, 33.33% of the qualification

Paper 3 – Statistics and Mechanics, 2hrs, 100 marks, 33.33% of the qualification

WHAT SUBJECTS GO WITH MATHEMATICS?

Scholars often also study Physics, Economics, Computing, Chemistry and Biology.

WHERE COULD IT LEAD ME?

Scholars can go onto study any of the following courses at university: Mathematics, any Engineering or science related course, Business, Economics or Computing courses.

Adam Nicholson
BSc Physics,
University of Sheffield



Physics (AQA)

Entry requirements: Combined science grade 7 or above; separate sciences grade 7 or above

A Level Physics is a challenging course that covers a diverse set of topics. Physics encompasses the study of the universe from the largest galaxies to the smallest subatomic particles. It is the basis of many other sciences including Chemistry, Astronomy, Seismology and Oceanography. The fundamentals of Physics are also central to the technology that drives modern society.

WHO IS THIS SUITABLE FOR?

- You enjoy solving problems, and in particular those who enjoy solving problems mathematically
- You are eager to understand the world around us, the world inside us and the world beyond us
- You wish to pursue a career in science, technology, engineering or anything involving Mathematics

WHAT WILL I BE STUDYING?

Year 12 – Measurement; particles and radiation; waves; mechanics and materials; electricity

Year 13 – Further Mechanics; Thermal Physics; Fields and their consequences; Nuclear Physics; Astrophysics

HOW WILL I BE ASSESSED?

You will be assessed at the end of Year 13

Paper 1 – 85 marks, 2hrs, 34% of A Level grade

Paper 2 – 85 marks, 2hrs, 34% of A Level grade

Paper 3 – 80 marks, 2hrs, 32% of A Level grade

All papers include relevant practical skills questions.

WHAT SUBJECTS GO WITH PHYSICS?

Scholars are advised to study mathematics alongside Physics as many degree programmes require this combination.

WHERE COULD IT LEAD ME?

A Level Physics is an excellent foundation for any university course involving Science, Mathematics, Engineering or Computer Science. Physicists are problem solvers and their analytical skills are in huge demand across a variety of industries. You can find Physics graduates working in Journalism, Law, Finance, Medicine as well as in industrial, university and government labs. So whether you would like to discover the origins of dark matter, develop a world changing piece of new technology or save lives by predicting the next major earthquake; studying Physics will give you the tools to do it all.



Ilhan Mohammed (left)
Bsc Chemistry, Manchester
Metropolitan University



Matthew Beattie Mair
BSc Chemistry, University of
Birmingham

Chemistry (AQA)

Entry requirements: Combined science grade 7 or above; separate sciences grade 7 or above

A Level Chemistry will develop your understanding of chemistry allowing you to explain the properties and structures of the molecules and compounds which make up the very world around you. The course takes a broad but detailed approach to chemistry where you will study a range of topics from the shapes of atoms to how cancer treatments work.

WHO IS THIS SUITABLE FOR?

- You welcome the challenge to work hard, develop new knowledge and see it applied in a variety of different situations
- You enjoy practical work to complement the theoretical knowledge you will gain in lessons

WHAT WILL I BE STUDYING?

Year 12 – Development of practical skills; Foundations in Chemistry; Periodic Table and Energy; Organic Chemistry

Year 13 – Physical Chemistry and Elements; pH and Buffers; Transition Elements; Organic Chemistry; Aromatic Compounds; Polymers; Chromatography; Spectroscopy

HOW WILL I BE ASSESSED?

You will be assessed at the end of Year 13

Paper 1 – Modules 1, 2, 3, 5; 2 hrs 15mins written exam; 100 marks; 37% of the course

Paper 2 – Modules 1, 2, 4, 6; 2hrs 15mins written exam; 100 marks; 37% of the course

Paper 3 – All topics ; 1hr 30mins written exam; 70 marks; 26% of the course

All papers include relevant practical skills questions.

WHAT SUBJECTS GO WITH MATHEMATICS?

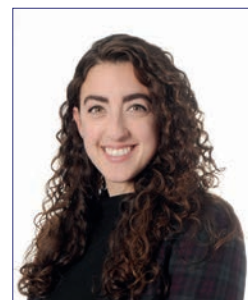
Scholars are advised to study Biology, Physics or Mathematics.

WHERE COULD IT LEAD ME?

You could be a chemist or biochemist. Chemistry also provides essential Knowledge For Careers Such As Those In Medicine, Veterinary Science, Geology, Dentistry, Biology, Engineering, Forensic Science, Toxicology, Nanotechnology, Environmental Law or Policy Making, Patent Law and Teaching.

Samantha Motion
BSc Human Biology,
Sheffield Hallam University

Alexa Bianco (right)
MSc Bioscience,
University of Leeds



Biology (AQA)

Entry requirements: Combined science grade 7 or above; separate sciences grade 7 or above A Level

Biology is an exciting and stimulating course with a mix of different specialisms, leading to a variety of possible careers; Botany, Zoology, Genetics, Immunology, Biochemistry, Physiology and much more. Whether you are a talented biologist considering a future in the subject or just a scholar with a keen interest in all things living, then A Level Biology is for you.

WHO IS THIS SUITABLE FOR?

- You want a deeper understanding of the living world around you
- You want to plan and carry out your own investigations, collecting and analysing your own results. You want to get 'hands on' experience on the Biology field trip/residential
- You want to understand how to make decisions in the future based on scientific facts on topics such as genetic modification; vaccination programmes; the impact of the living world on the environment and climate change

WHAT WILL I BE STUDYING?

Year 12 – Biological molecules; Cells (beyond mitochondria and the nucleus); Transport systems and Genetic information and variation

Year 13 – Energy transfers between organisms; response to the environment (homeostasis), genetics, populations, evolution and ecosystems, the control of gene expression

HOW WILL I BE ASSESSED?

You will be assessed at the end of Year 13

Paper 1 – Topics 1 – 4; 2hr written exam; 91 marks; 35% of the course

Paper 2 – Topics 5 – 8; 2hr written exam; 91 marks; 35% of the course

Paper 3 – Topics 1 – 8; 2hr written exam; 78 marks; 30% of the course

WHAT SUBJECTS GO WITH PHYSICS?

Scholars often study a further STEM subject such as Chemistry or Mathematics. Biology also works well with the study of Geography and Psychology.

WHERE COULD IT LEAD ME?

Being such a broad topic, you're bound to find a specific area of interest. Biology will allow you further progression into many undergraduate degree courses including Medicine, Forensic Science, Physiotherapy, Veterinary Medicine, Dentistry, Biochemistry, Nutrition, Ecology, Marine Biology, Sports Science, Food Science, Biotechnology, Biomedical Sciences, Optometry and so on.

TRIPS

Residential trip to complete field work.



Jessica Norbury (left)
MComp Computing, Edge
Hill University

Luke Moreton
Information Technology
& Organisations, The
University of Sheffield

Computer Science (OCR)

Entry requirements: Mathematics grade 6 or above A Level

Computer Science is a challenging and intriguing subject, which covers many aspects of Computing such as systems software, data types, network technologies, Boolean algebra, computational thinking and programming techniques. Whether you are a keen gamer, a programmer, or interested in physical computing projects, then A Level Computer Science is for you.

WHO IS THIS SUITABLE FOR?

- You want a deeper understanding of how technology or coding works
- You want to learn how to code with Python, and other programming languages such as C++
- You want to work on your own a practical coding programming project
- You want to complete a computing related work experience placement

WHAT WILL I BE STUDYING?

Year 12 – The characteristics of contemporary processors, input, output and storage devices. Types of software and the different methodologies used to develop software. Data exchange between different systems. Data types, data structures and algorithms. Legal, moral, cultural and ethical issues.

Year 13 – Computational thinking. Problem solving and programming – how computers and programs can be used to solve problems. Algorithms and how they can be used to describe and solve problems.

HOW WILL I BE ASSESSED?

Paper 1 – Computer systems 2hrs 30mins. 40%

Paper 2 – Algorithms and programming 2hrs 30mins. 40%

Paper 3 – Programming project Non-exam assessment. Scholars will analyse, design, develop, test, evaluate and document a program written in a suitable programming language. 20%

WHAT SUBJECTS GO WITH MATHEMATICS?

Scholars often study a STEM subject e.g. Physics/ Mathematics.

WHERE COULD IT LEAD ME?

This A Level prepares scholars for a Computer Science degrees as well as degree apprenticeships e.g. such as the Game Programmer Apprenticeship Programme offered by SUMO Digital. You could also enter straight into the world of work in one of Sheffield's many technology companies.

TRIPS

The National Video Game Museum, University of Cambridge's Department of Computer Science and Technology (and a visit to the Raspberry Pi store!), The Mini factory in Oxford (one of Britain's most modern factories).

Gemma Driver

MA in English Literature at
Virginia Commonwealth
University

Rebecca Dudley (right)

BA English and American
Literature, University of
Manchester



English Literature (AQA)

Entry requirements: Grade 6 in English Literature

A Level English Literature invites scholars to delve into some big questions regarding the complexities of the human experience. For example what constitutes a tragedy? Who is responsible for a figures downfall: society? The individual? Fate? Why do humans protest? Why and how to individuals and group exploit power? What conditions cause humans to rebel? What conditions produce criminals? Who is ultimately responsible for criminal behaviour: the individual, family, society, the state?

WHO IS THIS SUITABLE FOR?

- You are an avid reader who would love to learn more about literature
- You enjoy expressing your opinion and creating convincing arguments
- You want to keep the doors open for options in the future – English Literature is a valued qualification by universities and hugely respected by employers

WHAT WILL I BE STUDYING?

Year 12 – Tragedy: Othello, Tess of the D'Urbervilles, Death of a Salesman

Year 13 – Crime: Oliver Twist, The Murder of Roger Ackroyd, Oscar Wilde/George Crabbe/ Robert Browning

HOW WILL I BE ASSESSED?

You will be assessed at the end of Year 13

Paper 1 – Literary Genres: 3 Essays on 3 texts. 2hrs 30mins 40%

Paper 2 – Texts and Genres: 3 Essays on 3 texts and 1 unseen extract. 3hrs 40%

NEA – Coursework 2 x 1500 word essays applying literary theory to a novel and poetry 20%

WHAT SUBJECTS GO WITH PHYSICS?

Scholars often study a further humanities or a social science.

WHERE COULD IT LEAD ME?

Being such a broad topic, you're bound to find a specific area of interest. Writer, Publisher, Journalist, Teacher, Public Relations, Advertising, Marketing, Film and TV, Finance.

TRIPS

Theatre trips both locally and nationally. You will enjoy a minimum of 4 productions!



Amy Marsden (left)
BA History, Sheffield
Hallam University

Vicky Birch
BA History, University
of Nottingham

History (AQA)

Entry requirements: Grade 6 in History

Everything we experience today has been influenced by past events. History helps us understand the past, our present and change the future. You will be able to research, analyse and evaluate information and develop the capacity to make substantiated judgements. It will also require you to weigh up different points of view, to consider the perspectives of a range of authors, to critically analyse information and to debate with your peers.

WHO IS THIS SUITABLE FOR?

- You enjoy studying the past and want to learn how it has influenced the world today
- You enjoy formulating arguments, expressing your opinions and getting involved in debates
- You want to have multiple career options. History is a well-regarded subject and is valued by universities and employers

WHAT WILL I BE STUDYING?

Paper 1 – Industrialisation and the people: Britain, c1783–1885. This topic allows scholars to study change, continuity, cause and consequence.

Paper 2 – The Cold War, c1945–1991. For this topic you study the evolving course of international relations during an era of tension between communist and capitalist powers which threatened nuclear war. It explores concepts such as communism and anti-communism, aggression and détente. Historical Enquiry – This is a piece of research work which may be done on a particular topic. We will offer you a range of questions and then you will pick a question.

HOW WILL I BE ASSESSED?

You will be assessed at the end of Year 13

Paper 1 – 2hrs 30 mins – 40%

Paper 2 – 2hrs 30 mins – 40%

A piece of coursework – (between 3,500–4,500 words) the Historical Enquiry – 20%

WHAT SUBJECTS GO WITH MATHEMATICS?

Scholars often study English Literature, Humanities or Social Sciences.

WHERE COULD IT LEAD ME?

Journalism, Marketing, Film, Media, Law, the Civil Service, Law and Teaching. Trips A trip to Kehlham Island during your study of Industrialisation in Britain.

Luis Pérez Burgueño
BA Hispanic Philology,
University of Salamanca.
MA Teaching Spanish
language and literature,
University of Salamanca

Mireia Barrachina Plo (right)
BA History, Barcelona
University



Spanish (AQA)

Entry requirements: GCSE Spanish Grade 6 or above A Level

Spanish is much more than just learning a language. Firstly, you will learn about a wide range of topics related to the Hispanic world. For example, issues such as sexism, immigration, racism and the influence of technology. Secondly, you will develop writing and speaking skills. Finally, A Level lessons are very interactive, quick paced. You really get to understand and love anything Hispanic.

WHO IS THIS SUITABLE FOR?

- You are interested in learning about Hispanic culture and society today
- You are interested in a wide range of issues: sociological, political, cultural or historical

WHAT WILL I BE STUDYING?

Year 12 – Aspects of Hispanic Society (evolution of traditional values, cyberspace and equal rights); Artistic Culture in the Hispanic World (modern day idols, Spanish regional identity and cultural heritage); and “Volver” (Film by Pedro Almodóvar)

Year 13 – Multiculturalism in Hispanic society (immigration, racism and integration); Aspects of Political Life in the Hispanic World (young’s people’s role in society, monarchies, dictatorships and popular movements); and “La Casa de Bernarda Alba” (Play by Federico García Lorca)

HOW WILL I BE ASSESSED?

You will be assessed at the end of Year 13

Paper 1 – Listening, reading and writing; 2hrs 30mins written exam; 100 marks; 50% of the course

Paper 2 – Writing; 2hrs written exam; 80 marks; 20% of the course

Paper 3 – Speaking; 21-23mins including 5mins preparation; 60 marks; 30% of the course

WHAT SUBJECTS GO WITH PHYSICS?

Some scholars decide to combine it with a STEM subject as it shows you are a well-rounded scholar. Others combine it with a social science or a humanities.

WHERE COULD IT LEAD ME?

Language courses provide scholars with excellent transferable skills such as autonomy, creativity, tenacity and linguistic, cultural and cognitive flexibility. Many universities now offer the study of any degree course combined with the study of a language, therefore, it can lead to a wide range of degree courses, such as Medicine, Law, Computing or Business and numerous career paths.

TRIPS

You will have multiple opportunities to learn outside the classroom: an affordable exchange trip to Spain and language days at universities.



Soraiya Ali
BA Geography,
University of Leicester

Sophie McLean (left)
BSc Geology, University
of Liverpool

Geography (AQA)

Entry requirements: Minimum of grade 6 in GCSE Geography

A Level Geography examines the awe-inspiring natural processes of our beautiful planet, helping us to appreciate and value its landscapes, oceans and ecosystems. Geography is about places, people, culture and identity. As we face global challenges on an unprecedented scale, Geography will allow you to study the 'big ideas'. It will excite and challenge your perceptions, stimulate your investigative and analytical skills and develop your ability to examine complexity and to think critically.

WHO IS THIS SUITABLE FOR?

- Scholars who are interested in pressing global issues and enjoy learning about people and their societies, economies, cultures and the environment
- Scholars who are keen to develop a wide range of skills and apply these to real-world problems

WHAT WILL I BE STUDYING?

Paper 1 – Physical Geography: A – Water and Carbon Cycles; B – Coastal Systems and Landscapes; C – Hazards

Paper 2 – Human Geography: A – Global Systems and Global Governance; B – Changing Places; C – Urban Environments

Paper 3 – Geography Fieldwork Investigation: Students complete an individual investigation.

HOW WILL I BE ASSESSED?

Component 1 – Physical Geography. 2hrs
30mins – 120 marks – 40%

Component 2 – Human Geography. 2hrs
30mins – 120 marks – 40%

Component 3 – Geography Fieldwork
Investigation 3,000–4,000 words –
60 marks – 20%

WHAT SUBJECTS GO WITH MATHEMATICS?

Geography lends itself to other Social Sciences including Psychology and Sociology as well as Biology and Mathematics.

WHERE COULD IT LEAD ME?

Geographers are valued in the workplace for their multidisciplinary approach to solving problems and for the range of data analysis at which they are adept. Whether your future career lies in the Environmental Sector, Business, Education, the Natural or Social Sciences, the Media, in Geospatial Industries or in Travel, Geography opens up a range of choices for your future work and career.

TRIPS

A residential field trip to the Cranedale Centre, North Yorkshire.

Tristan Powell

BA Philosophy, Politics
and Ethics, University of
Brighton

Tracey Chatha (right)

Dphil Anatomical
Neuropharmacology,
University of Oxford



Psychology (AQA)

Entry requirements: Grade 6 in English Language, Mathematics and Biology

Psychology is the scientific study of human behaviour. Through studying Psychology, you will learn how to explain and predict human behaviour.

WHO IS THIS SUITABLE FOR?

- You wonder if we can rely on the testimony of eyewitnesses who recall details of a crime
- You want to know why people obey destructive authority
- You want to know why humans form attachments with their infants
- You question whether it is better to treat people with schizophrenia with drugs or talking therapies
- You wonder if criminals are born made and have the capacity to change
- You are interested in why memory disorders such as Alzheimer's occur

WHAT WILL I BE STUDYING?

Unit 1 – Social Influence, Memory, attachment, psychopathology

Unit 2 – Approaches in Psychology, research methods, Biospsychology

Unit 3 – Issues and debates in Psychology, gender, stress, addiction

HOW WILL I BE ASSESSED?

You will be assessed at the end of Year 13

Paper 1 – Introductory Topics in Psychology
2hrs 33%

Paper 2 – Psychology in Context 2hrs 33%

Paper 3 – Issues and Options in Psychology
2hrs 33%

WHAT SUBJECTS GO WITH PHYSICS?

Scholars often combine Psychology with Sociology, English Literature, Spanish and any other essay based subject.

WHERE COULD IT LEAD ME?

Psychology A Level supports further study in a variety of areas, including clinical Psychology, Medicine, Law, Sport and Teaching.



Grace Clough (left)
BA Sociology, University
of Leeds. MSc Sociology,
University of Oxford

Sociology (AQA)

Entry requirements: Grade 6 in English Language

Have you ever asked why society is the way it is? Or questioned why people interact in modern society in the way that they do? Then you will likely enjoy Sociology. Sociology explores how we are shaped and controlled by social institutions such as the family, education, law etc. Sociologists create theories that seek to explain norms and values, human behaviour and the workings of society. Come ready to explore, debate and be self-critical. It is a gateway to Russell Group Universities.

WHO IS THIS SUITABLE FOR?

- You pose big questions about modern society and enjoy debating
- You question who decides what is lawful and what is criminal
- You query whether beliefs divide people or bring them together
- You interrogate whether education prepares young people for work or for life

WHAT WILL I BE STUDYING?

1st year themes – Education with theory and methods and the media

2nd year themes – Families & Households and Crime & Deviance

HOW WILL I BE ASSESSED?

Paper 1 – Education with theory and methods
2hrs 33%

Paper 2 – Families & Households and Media
2hrs 33%

Paper 3 – Crime & Deviance with theory and methods 2hrs 33%

WHAT SUBJECTS GO WITH MATHEMATICS?

Scholars often combine Sociology with Psychology, English Literature, Spanish and any other essay based subject.

WHERE COULD IT LEAD ME?

It is a good choice for those seeking careers in the Civil Service, Health Service, Law, Journalism, Politics, Social Policy, Government Research the Charity Sector and Social Work.

TRIPS

Royal Courts of Justice in London, Museum of Childhood, Shrewsbury Prison

Whitney Bryan
BA Fine Art, Sheffield
Hallam University

Leslie Arellon (right)
BA (Hons) Interior Design,
Sheffield Hallam University



Fine Art (AQA)

Entry requirements: Grade 6 in Fine Art

A level art is space for scholars to push the boundaries of their creativity, through the exploration of an extensive range of materials and technical skills. Scholars will be exposed to a range of artists and craft makers and begin to understand the cultural, political historical relevance of art. Scholars will learn how to use visual language to express their perspective and create final outcomes.

WHO IS THIS SUITABLE FOR?

- You love to explore materials and push the boundaries through exploration.
- You love to develop your artistic practice, through research of artists and craft makers.
- Good presentation skills.
- The ability to reflect and refine on your work throughout the journey.

WHAT WILL I BE STUDYING?

- Contextual studies
- Observational drawing through a range of materials such as chalk, oil pastels,
- Painting – water colour, acrylic and oil paints
- Print making
- 3 dimensional materials

HOW WILL I BE ASSESSED?

Component 1 - a personal investigation in response to an issue or theme, supported by a 1000- 3000 word essay.

Component 2 - externally set task, where students will realise their intentions based upon a chosen title. Followed by a 15 hour exam where students create a final outcome.

WHAT SUBJECTS GO WITH PHYSICS?

Scholars often choose English Literature as this links well with analytical skills needed within art.

WHERE COULD IT LEAD ME?

To further study within an creative subject such as interior design, architecture, fashion design or graphic design.

POSSIBLE CAREERS

- Advertising art director
- Animator
- Art therapist
- Ceramics designer
- Gallery manager
- Fine artist

TRIPS

Art galleries, Sea Life Centre

Extended Project Qualification

WHAT IS THE EXTENDED PROJECT QUALIFICATION (EPQ)?

The EPQ is a Level 3 qualification, which allows scholars to choose a topic area to research in depth producing either a 5000 word report or an artefact, which can be anything ranging from a piece of art, to a website, a business or a story.

WHAT SKILLS OR QUALITIES WILL I DEVELOP?

You will develop multiple skills such as academic research and academic writing; time and project management or presentation skills. You will also gain an incredible personal satisfaction from independently completing a big project that interests you.

WHAT ABOUT FUTURE PROSPECTS AND CAREERS?

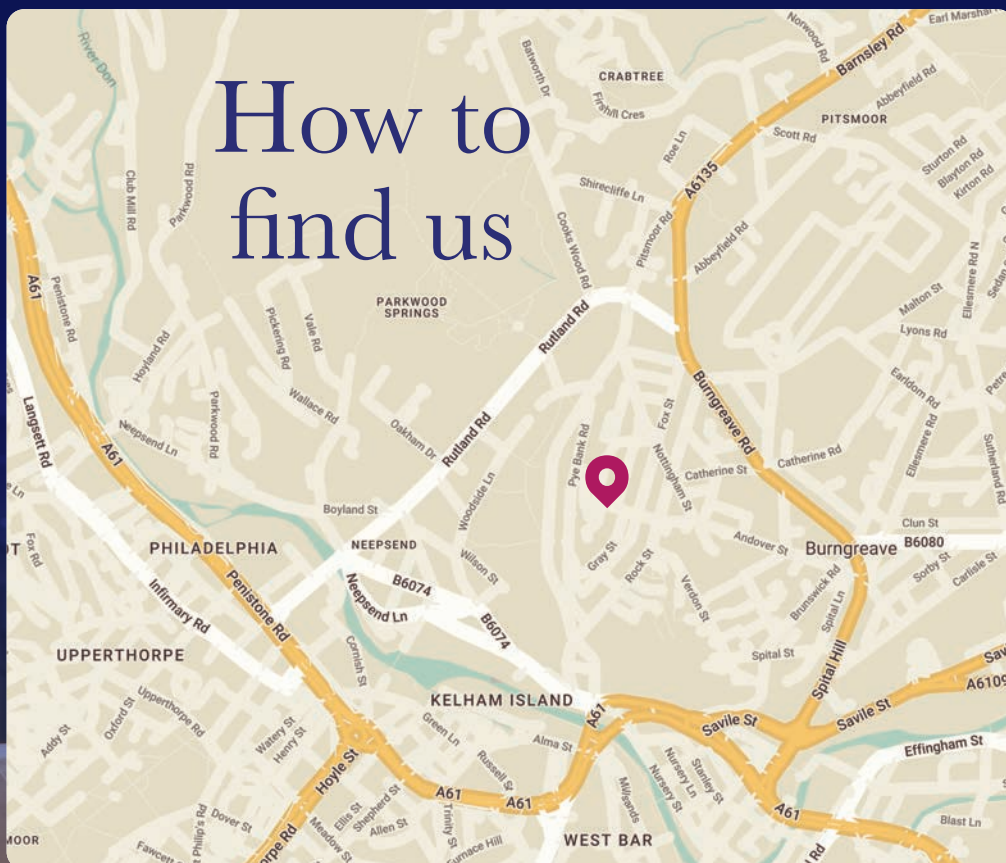
The EPQ promotes intellectual curiosity and critical thinking and therefore this qualification is highly valued by universities with many lowering their entrance offer if scholars produce a good EPQ. It also helps students to earn extra UCAS points (worth up to 50% of the UCAS points value of an A Level).

ADDITIONAL INFORMATION

In order to complete the EPQ, scholars have some taught lessons on research skills, academic writing or time management to name a few. They are also assigned a project supervisor with whom they have at least 4 meetings throughout the project. This member of staff will not necessarily be related to the topic chosen but would guide the scholar throughout the different stages ensuring they produce the best possible project.



How to find us





Astrea Academy Sheffield, Andover Street, Sheffield S3 9BE **0114 553 9110**

[f](#) Astrea Academy Sheffield
 [t](#) @AstreaAcadSheff
 [i](#) astreaacademysheffield

astreasheffield.org

