



Newsletter

May 2025



Summer 1



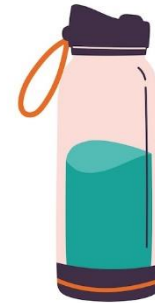
- This is the fifth of our newsletters for the year. There will be a newsletter each half term.
- All of our past newsletters are available on the website.
- In between the newsletters, information will be shared by email, through the app, and on the noticeboards by the entrances to the school.



Appropriate clothes

Now that we have hotter, sunnier days, please make sure your children are appropriately dressed:

- A sun hat
- Light clothes – your child will not need a vest under their uniform
- Sun cream – please apply this at home, before they come to school, so that it lasts the day
- A water bottle – no fizzy drinks or juice
- Check the weather forecast – even a sunny day can change and you may need a waterproof cagoule



In Summer, children often take coats and jumpers off when they get warm. Please make sure **every** item has the child's name in. If yours has been lost, please check the coat rack outside the main entrance.

Transition Week - Sheffield Topic!

For the last full week of the year, all children will spend their lessons with their next teacher.

For the whole week, they will learn about different parts of Sheffield's history, including about different Sheffield artists, so that all children learn about the community they live in.

This will be a chance for all children to get to know their teachers before the summer holiday, as well as spending time on one of our favourite topics.

Please make sure that any holidays are not booked until after 23rd July.



Dates for the Diary



- Y6 SATs Week – Monday 12th May to Thursday 15th May
- Y4 Multiplication Tables Check – Monday 2nd to Friday 13th June
- Key Stage 1 Phonics Screening – Tuesday 10th to Friday 13th June
- Last day of term – Friday 23rd May
- First day back – Monday 2nd June
- School shut for training days– Friday 6th June & Monday 9th June

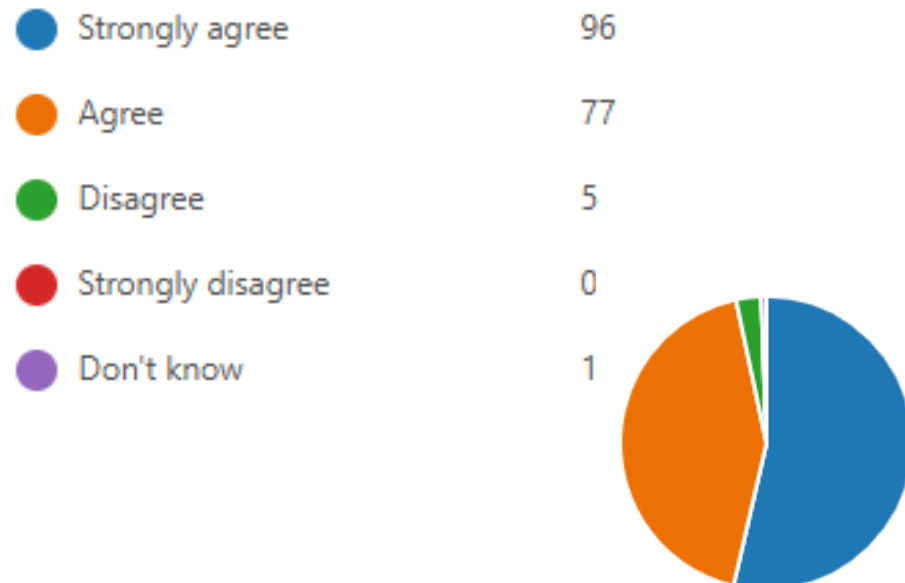
Code of Conduct

- We have unfortunately had a rise in the number of incidents where adults have been rude or aggressive towards members of staff.
- We remind all parents that, in our school, we teach the children to respect all members of our community and expect the same respect in return.
- We will not tolerate aggression, intimidation, threatening behaviour or rudeness towards our staff.
- Should we encounter these behaviours, you may be asked to leave the site and police may be informed.

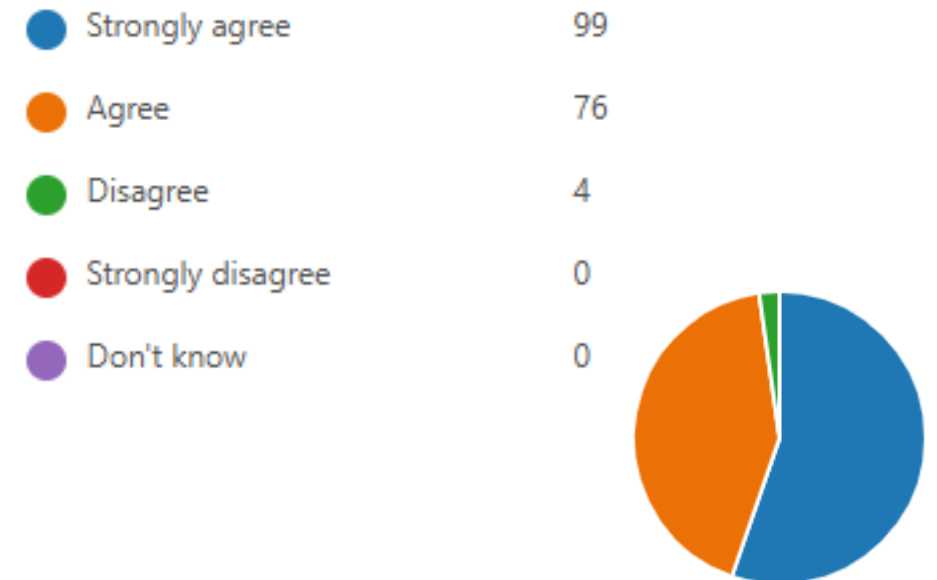
Parent survey

- Thank you to those parents who filled in the parent survey that we gave out at our last Parents' Meetings.
- We would like to share some of the results and the actions we are taking.

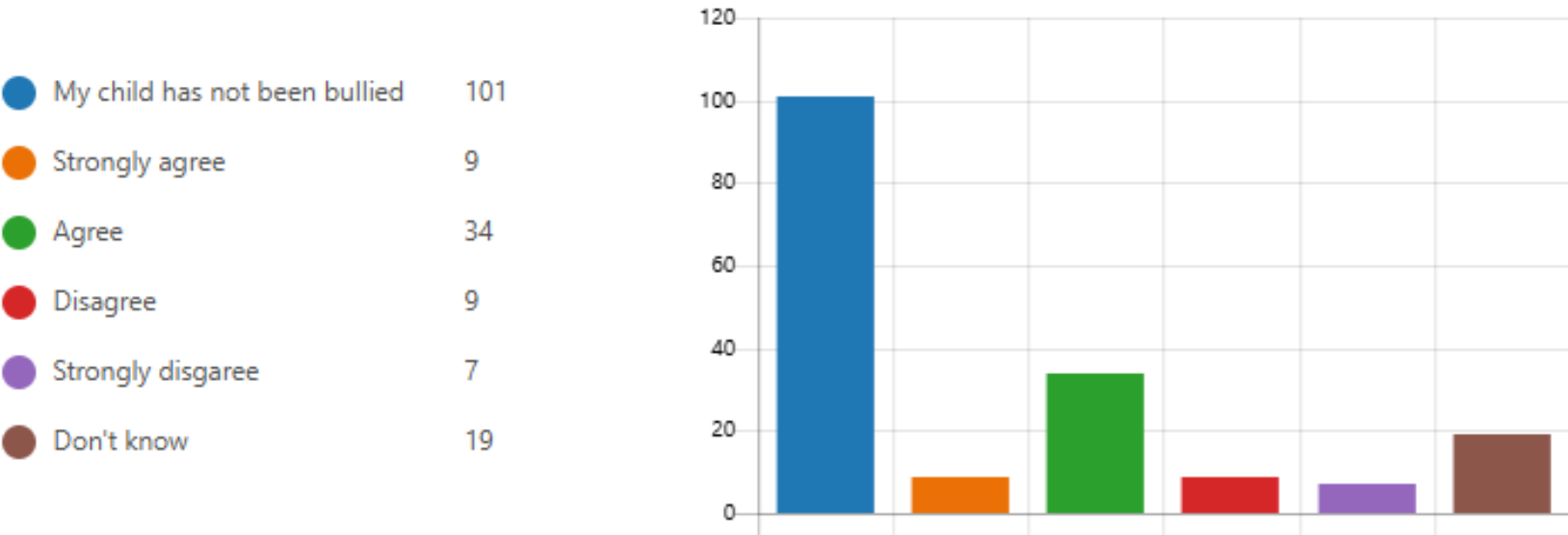
My child is happy at this school



My child feels safe at this school



My child has been bullied this year and the school dealt with the bullying quickly and effectively



- This shows that a number of parents are concerned about bullying. However, when we have investigated any reports from parents, it appears that these are actually one-off incidents and disagreements, and so the children know that these are not classed as bullying.
- To help understanding, the following slides show the information we share with the children so that they know what bullying is and when it should be reported.

What is Bullying?

Intentional
The person is doing it on purpose to hurt or upset someone else.

Repeated
The person does it more than once over more than one day.

Power Imbalance
The person is doing it to someone who is a less powerful person.

Types of Bullying

#HATE
#BULLY

Physical Bullying
Intentionally injuring or intimidating another person by striking, pinching, pushing, kicking, or damaging their property.

Verbal Bullying
The use of abusive language or name calling, including remarks that are racist and homophobic.

Relational Bullying
Intimidation or humiliation that negatively affects one's mental health and wellbeing.

Cyberbullying
Repeatedly sending hurtful messages through social media, gaming platforms or chat rooms.

Types of Bullying

PHYSICAL

VERBAL

RELATIONAL

CYBERBULLYING

What is Bullying?

Intentional

The person is doing it on purpose to hurt or upset someone else.



Repeated

The person does it more than once over more than one day.



Power Imbalance

The person is doing it to someone who is a less powerful person.



- An act of bullying meets **all three** of these criteria:
 - It has to be **intentional** – it has to have been done deliberately;
 - It has to be **repeated** – it is done over and over again over a period of time;
 - There has to be a **power imbalance** – the person doing it is taking advantage of the fact that they feel more confident than the other, because of their age, their physical strength or size, or because they are part of a larger group.

Types of Bullying

#HATE

#BULLY

Physical Bullying

Intentionally injuring or intimidating another person by striking, pinching, pushing, kicking, or damaging their property.

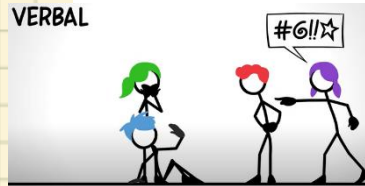
PHYSICAL



Verbal Bullying

The use of abusive language or name calling, including remarks that are racist and homophobic.

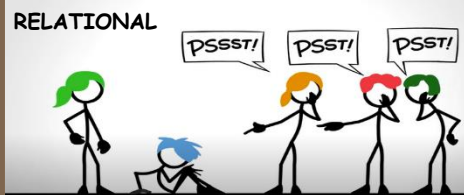
VERBAL



Relational Bullying

Intimidation or humiliation that negatively affects one's mental health and wellbeing.

RELATIONAL



Cyberbullying

Repeatedly sending hurtful messages through social media, gaming platforms or chat rooms.

CYBERBULLYING



There are four types of bullying:

- Physical – hurting someone or damaging their property;
- Verbal – being rude or abusive, or using discriminatory language;
- Relational – damaging someone's friendships or relationships with others;
- Cyberbullying – using technology, including social media and gaming, to send hurtful messages.

Strongly agree	79
Agree	81
Disagree	10
Strongly disagree	1
Don't know	8



- Termly curriculum maps

- Coffee mornings to introduce the year's curriculum and another to look at children's work (presentations from these can be found below)

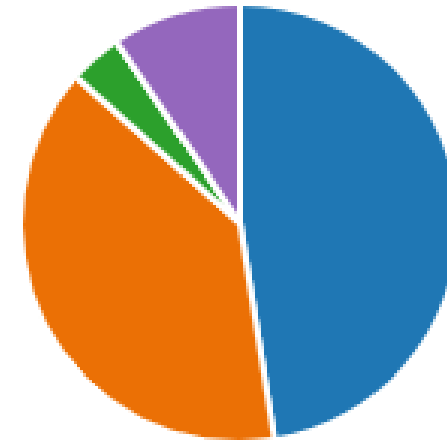
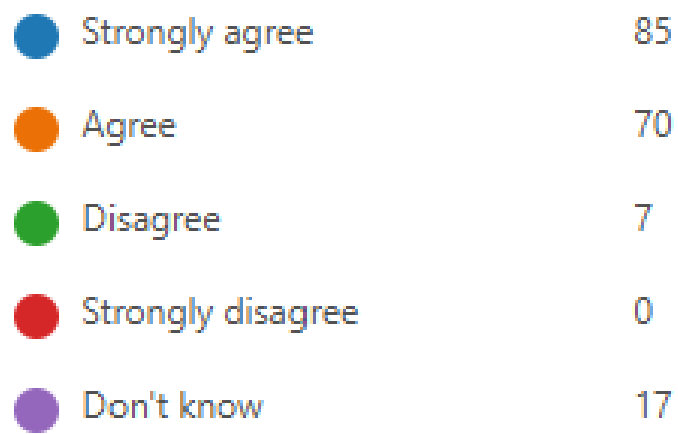
[illegible]

After parents arrive, we will ask their children to come to the hall with their books. This is a chance for you to see the work that your children are doing, with the teachers available to talk to.

- Thursday 23rd January 2025 –Y3 (including information about swimming)
- Thursday 30th January 2025 – Y4
- Thursday 6th February 2025 – Y1 & Phonics
- Thursday 13th February 2025 – Y2 & Phonics
- Thursday 27th February 2025 – Y5
- Thursday 6th March 2025 – Y6


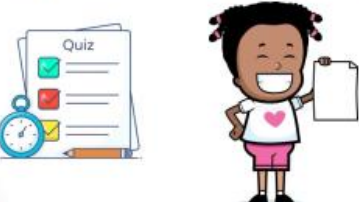



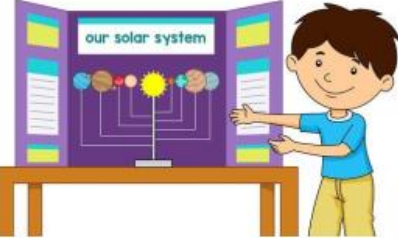





My child can take part in clubs and activities at this school



- Each half term, every year group from Year 1 to Year 6 holds an after-school club.
- These alternate between targeted support for learning, where we invite specific children, and creative/"fun" activities which are open to all.
- We also hold regular sports clubs, and each year group will be offered one of these during the year.
- Children are given these letters to sign up, but if you would like to find out more, please speak to your class team.

Homework

<p><u>High Expectations</u></p> <p>Quiz - go onto Blooket/Kahoot/BBC Bitesize. Can you complete a quiz about your learning and achieve a high score?</p> <p>Presentation - when you make something to bring into class, can you make sure that it is presented to the highest possible standard?</p>  	<p><u>Teamwork</u></p> <p>How do you help others? Can you do chores in the house? Do you help with the cooking?</p> <p>Have you joined local groups to do litter picks or other help in the community?</p> <p>Send evidence to your class email address.</p>  	<p><u>Supportive Challenge</u></p> <p>Can you teach someone at home what you have learnt in class?</p> <p>Can you help a younger brother or sister with their homework or reading?</p> 
<p><u>Scholarship</u></p> <p>Project - pick a topic from the Curriculum Map. Can you make a poster, topic book or presentation about this topic, showing what you have learnt?</p> 	<p><u>Curiosity</u></p> <p>Library - borrow a book from the library (school or Burngreave) on one of the topics from the Curriculum Map BBC Bitesize</p> <p>Think of a question about your topic and try to find the answer.</p> 	<p><u>Tenacity</u></p> <p>Can you learn a new skill at home? Learning an instrument, or a sport, or an arts skill.</p> <p>Practice regularly and show it to someone.</p> <p>Choose something new or something you find tricky from the Curriculum Map - can you practice it at home?</p>  

Homework at Byron Wood

Education at Byron Wood is built around our 6 values:
High Expectations, Teamwork, Supportive Challenge, Scholarship, Curiosity and Tenacity
We encourage our children to show these values at home, as well as in school, and use them to extend their learning.
Choose some of the activities listed, or think of some of your own, and bring it into school.

All children have been told about our new homework system, which encourages them to continue their learning at home and gives them a chance to follow our School Values.

Please encourage your child to choose some of these activities, and support them to do so.

If they bring their work into school, they will earn Values Points and maybe show it in assembly!

Packed lunches

- As we have a number of children who are allergic to nuts, we ask that you avoid including any foods that contain nuts in packed lunches.
- Our school dinners are already nut-free, and we know which children have allergies so that we can make sure we keep them safe.
- We also remind parents that packed lunches should form part of a healthy, balanced diet.
- As such, please include fruit, salads and healthy sandwich fillings, and avoid chocolates and sweets.





So far in our climate battle...

We have formed an Eco Committee who meet every Tuesday after school and plan future ideas to improve the sustainability of Byron Wood.

Visitors into school

In the last few weeks we have had visitors from the RSPB and Sheffield and Rotherham Wildlife Trust into school to speak to KS2 children about their organisations.

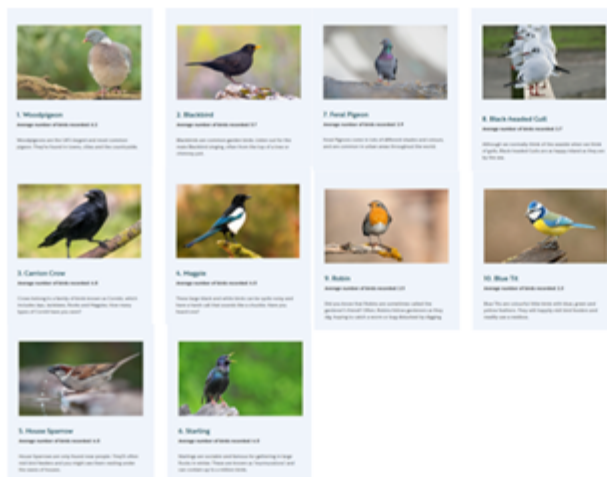


Planting

In the Autumn term, children from year two, four and the eco warriors planted spring bulbs, onions and garlic around school. The onions and garlic seem to be doing really well (although we have had many of them pulled out), and they will be ready to harvest in the summer. The spring bulbs have popped up and can be seen around the school entrance, let us know if you spot them!

Big Bird Watch

Children from year 4 participated in the RSPB Big Bird watch in February. Unfortunately, it was very cold and grey and all we saw were magpies, but we still recorded our data! Since, we have seen robins, black birds, crows and pigeons on site. Here are the results from across the country.



BYRON WOOD ACADEMY

Eco Newsletter Summer 1

What we are working on now...

The eco warriors are currently completing tasks within the RSPB Wild Challenge. We have already completed the *Big Bird Watch* and *Look Closer* and plan on completing more activities over the next few weeks. This is also something you could complete at home, let us know if you do!



With the weather getting warmer, and moving into spring and summer, we are hoping to get some more plants in the ground, both for eating, and to help the pollinators!

We have been inspired by the Wildlife Trust's visit and would like to do more to support our pollinators. We are planning on making more habitats, and put out food for wildlife. This could include spreading wild flowers, putting up bird feeds and creating insect houses. Let us know if you do any of these at home!

School term dates

- These are the dates for this school year 2024-2025.
- Please arrange appointments and holidays for days when the school is closed.

	Denotes Bank Holidays		School closed for staff training day
	Denotes School Holidays		School closed for Academy Trust staff training day

September (21 Days) M T W T F S S 1 2 3 4 5 6 7 8 9 10 11 12 13 14 15 16 17 18 19 20 21 22 23 24 25 26 27 28 29 30	October (19 Days) M T W T F S S 1 2 3 4 5 6 7 8 9 10 11 12 13 14 15 16 17 18 19 20 21 22 23 24 25 26 27 28 29 30 31	November (20 Days) M T W T F S S 1 2 3 4 5 6 7 8 9 10 11 12 13 14 15 16 17 18 19 20 21 22 23 24 25 26 27 28 29 30
December (15 Days) M T W T F S S 1 2 3 4 5 6 7 8 9 10 11 12 13 14 15 16 17 18 19 20 21 22 23 24 25 26 27 28 29 30 31	January (20 days) M T W T F S S 1 2 3 4 5 6 7 8 9 10 11 12 13 14 15 16 17 18 19 20 21 22 23 24 25 26 27 28 29 30 31	February (15 days) M T W T F S S 1 2 3 4 5 6 7 8 9 10 11 12 13 14 15 16 17 18 19 20 21 22 23 24 25 26 27 28
March (20 Days) M T W T F S S 1 2 3 4 5 6 7 8 9 10 11 12 13 14 15 16 17 18 19 20 21 22 23 24 25 26 27 28 29 30 31	April (11 Days) M T W T F S S 1 2 3 4 5 6 7 8 9 10 11 12 13 14 15 16 17 18 19 20 21 22 23 24 25 26 27 28 29 30	May (16 Days) M T W T F S S 1 2 3 4 5 6 7 8 9 10 11 12 13 14 15 16 17 18 19 20 21 22 23 24 25 26 27 28 29 30 31
June (21 Days) M T W T F S S 1 2 3 4 5 6 7 8 9 10 11 12 13 14 15 16 17 18 19 20 21 22 23 24 25 26 27 28 29 30	July (17 Days) M T W T F S S 1 2 3 4 5 6 7 8 9 10 11 12 13 14 15 16 17 18 19 20 21 22 23 24 25 26 27 28 29 30 31	August M T W T F S S 1 2 3 4 5 6 7 8 9 10 11 12 13 14 15 16 17 18 19 20 21 22 23 24 25 26 27 28 29 30 31

School term dates

- These are Sheffield City Council's confirmed dates for the next school year 2025-2026.
- This calendar does not include days when Byron Wood is shut for staff training. These will be shared as soon as they have been confirmed.

	Denotes Bank Holidays		School closed for staff training day
	Denotes School Holidays		School closed for Academy Trust staff training day

SCHOOL CALENDAR FOR THE 2025/26 ACADEMIC YEAR For community and voluntary controlled primary, secondary and special schools

September (22 days) M T W T F S S 1 2 3 4 5 6 7 8 9 10 11 12 13 14 15 16 17 18 19 20 21 22 23 24 25 26 27 28 29 30	October (18 days) M T W T F S S 1 2 3 4 5 6 7 8 9 10 11 12 13 14 15 16 17 18 19 20 21 22 23 24 25 26 27 28 29 30 31	November (20 days) M T W T F S S 1 2 3 4 5 6 7 8 9 10 11 12 13 14 15 16 17 18 19 20 21 22 23 24 25 26 27 28 29 30
December (15 days) M T W T F S S 1 2 3 4 5 6 7 8 9 10 11 12 13 14 15 16 17 18 19 20 21 22 23 24 25 26 27 28 29 30 31	January (20 days) M T W T F S S 1 2 3 4 5 6 7 8 9 10 11 12 13 14 15 16 17 18 19 20 21 22 23 24 25 26 27 28 29 30 31	February (15 days) M T W T F S S 1 2 3 4 5 6 7 8 9 10 11 12 13 14 15 16 17 18 19 20 21 22 23 24 25 26 27 28
March (20 days) M T W T F S S 1 2 3 4 5 6 7 8 9 10 11 12 13 14 15 16 17 18 19 20 21 22 23 24 25 26 27 28 29 30 31	April (14 days) M T W T F S S 1 2 3 4 5 6 7 8 9 10 11 12 13 14 15 16 17 18 19 20 21 22 23 24 25 26 27 28 29 30	May (15 days) M T W T F S S 1 2 3 4 5 6 7 8 9 10 11 12 13 14 15 16 17 18 19 20 21 22 23 24 25 26 27 28 29 30 31
June (22 days) M T W T F S S 1 2 3 4 5 6 7 8 9 10 11 12 13 14 15 16 17 18 19 20 21 22 23 24 25 26 27 28 29 30	July (14 days) M T W T F S S 1 2 3 4 5 6 7 8 9 10 11 12 13 14 15 16 17 18 19 20 21 22 23 24 25 26 27 28 29 30 31	August M T W T F S S 1 2 3 4 5 6 7 8 9 10 11 12 13 14 15 16 17 18 19 20 21 22 23 24 25 26 27 28 29 30 31

School day



- 8.20am - Gates open (Breakfast club from 8am – 8.20am)
- 8.30am – Children will be greeted by staff and taken into school
- 8.45am – Gates close and children will need to enter by the office
(Please ensure that your child/ren are at the correct door before 8.45am)
- 3.15pm – School finishes (afternoon Nursery finishes at 3.10pm)

It is vital that every child is in school on time. They practise their reading skills from the moment they arrive in class, and missing lesson time makes it incredibly difficult for children to catch up.

School uniform

- All children must wear school uniform every day.
- If they are not in uniform, we will phone home to ask that it is brought in, or they will be asked to wear some of the items that we have in school.
- If they continue to not wear uniform, parents will be asked to come into school for a meeting.
- Jewellery is not allowed in school. Earrings must only be small studs. Children will be asked to remove any other jewellery and parents will be asked to collect it from the office at the end of the day.
- The following pages show what should be worn as school uniform:

School uniform



White shirt



White T-Shirt



Navy blue cardigan or jumper (with or without school logo)



Grey trousers



Grey skirt



Grey dress



Grey leggings or tights (under skirt/dress)



Black school shoes



Long sleeved vest

If required



Plain navy, grey or
white head scarf

PE days

- Y1 – Wednesdays and Thursdays
- Y2 – Tuesdays and Thursdays
- Y3 – Tuesdays and Fridays (swimming)
- Y4 – Mondays and Fridays
- Y5 – Tuesdays and Wednesdays
- Y6 – Mondays and Wednesdays



On PE days, children should come to school wearing their PE clothes. Earrings should not be worn on PE days.

PE Uniform



Navy or Black Jogging suit



White round neck T-Shirt



Black or navy shorts



Plain black trainers



NO trainer boots

No earrings
should be
worn to
school on a
PE day.

Contact

You can contact school in the following ways:

- Phone – 0114 272 3624
- Email – enquires@astreabyronwood.org
- Astrea App
- Don't forget to follow us on twitter @BWA_Sheffield