



# **BYRON WOOD ACADEMY**

**Astrea Academy Trust**  

---

INSPIRING BEYOND MEASURE

**Foundation Stage 2**

**Welcome to Ash and Elm**

## Introduction

We would like to welcome both you and your child to the Foundation Stage at Byron Wood Academy. We have two FS2/Reception classes, known as Ash and Elm.

**Session times are:**

**8.30am – 3.15pm**

At Byron Wood Academy we aim to ensure all children in Foundation Stage achieve their full potential through purposeful indoor and outdoor learning.

## How your child will learn

We want your child to be a happy, confident learner in our setting. We believe the best way we can achieve this is through planned, purposeful play opportunities in a happy, safe and organised environment which encourages them to be independent in their play. Young children learn through play and through interaction with adults.

Your child will learn in a variety of ways:

- Through teacher lead whole class activities.
- By engaging in adult led small group activities
- Through 'plan, learn, review'. This is where your child will learn independently by deciding where they want to play and explore, and then talk about what they have achieved.



Staff in the FS2 unit work with all children so although your child will have a named teacher, they will be taught and supported by several members of staff.

The Foundation Unit team staff:

Mrs Walton – Early Years Leader and Reception Teacher

Miss Hoskings – Reception Teacher

Miss Layne – Early Years Higher Level Teaching Assistant

Miss Myrie - Teaching Assistant

Miss Sadiq- Teaching Assistant

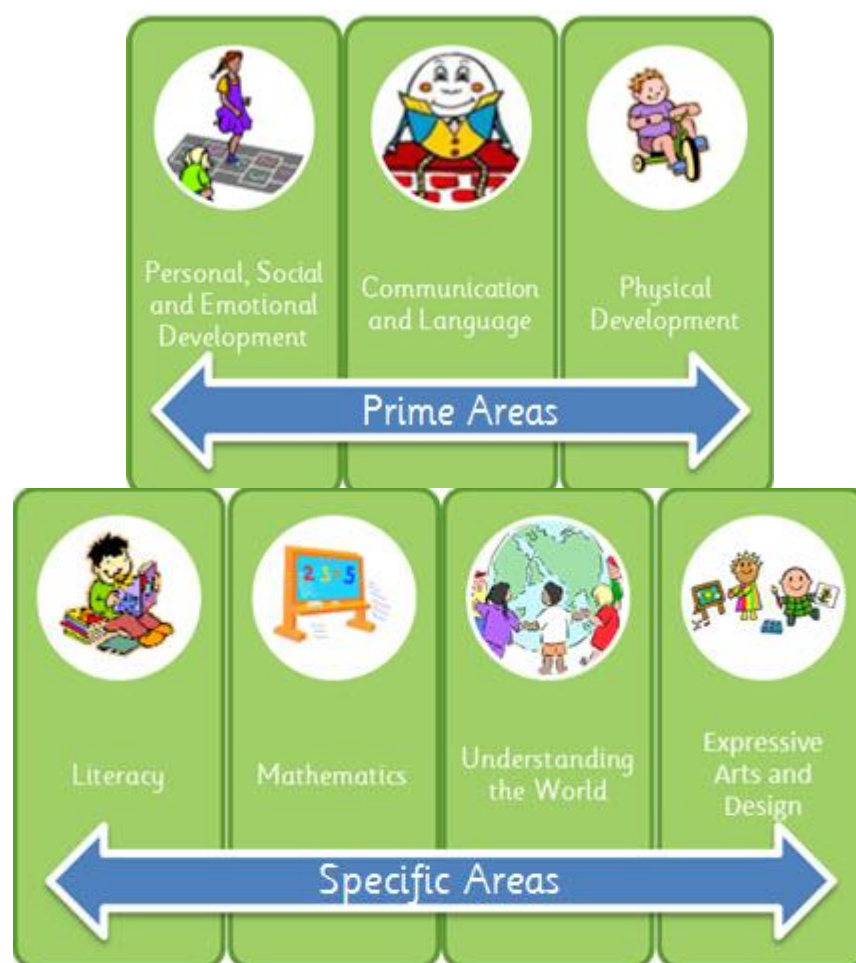
Miss Shah - Teaching Assistant

Miss Mesari - Teaching Assistant

## The EYFS Curriculum

The statutory curriculum we follow is the The Early Years Foundation Stage (**EYFS**) framework. The EYFS framework sets standards for the learning, development and care of children from birth to 5 years old and is play-based. The EYFS Framework is made up of seven areas of learning and each area is levelled in months according to the age of the children.

We provide a wide range of experiences and well planned activities so that your child will develop across all areas of learning. They are split into prime and specific areas.



## Assessment

We assess your child's development throughout the Foundation Stage. Assessments take place daily in the classroom both indoors and outdoors.

### **What do the assessments consist of?**

These assessments are in the form of interactions and observations. We observe your child whilst they play to record their learning and development.

## Parental Involvement

We know that your child's development at home is just as important as their learning in school. You can contribute to the assessments of your child's learning by:

- Tell us about something they have done that has made you and themselves proud.
- Helping your child with homework tasks.
- Reading with /sharing stories every night.
- Attending our parent workshops.
- Attending parent consultation evenings to discuss your child's progress.



## Snack

Your child will be provided with a daily healthy snack which consists of a piece of fruit or vegetable along with a drink of milk/water.

## Preparing your child for school

We are very excited for your child to start school with us. You can help to prepare them by:

- Encouraging your child to put on and take off their coat.
- Encouraging your child to be independent when using the toilet.
- Sharing books about school and encouraging them to talk about the pictures.
- Playing games to encourage sharing and turn taking skills.
- Providing resources such as chalk and pens so they can explore 'mark making' at home.

## Uniform

At Byron Wood Academy children are required to wear a uniform.

Girl's uniform:

- Navy blue cardigan/jumper - plain/academy logo on the front
- White polo shirt - plain/academy logo on the front
- Dark grey pinafore, trousers or skirt
- Black shoes
- Blue gingham dress (Summer)

Boy's Uniform

- Navy blue jumper - plain/academy logo on the front
- White polo shirt - plain/academy logo on the front
- Dark grey trousers or shorts (Summer)
- Black shoes

You can order uniform bearing the school logo from Tesco online. Uniform can be easily purchased from supermarkets.

## Useful information

Your child should attend school every day unless they are unwell. If your child is ill, please inform the school on **0114 2723624**.

Please ensure anyone collecting your child from school is familiar with the password you have provided. We would prefer children to be collected by an adult; however, with parental consent, young adults aged 16 and above are able to collect.

Sometimes toilet accidents happen at school or we may get messy whilst playing. Please provide your child with a spare set of clothes in a bag which can be hung on their peg.

Some of our learning will take place outdoors so please ensure your child is appropriately dressed for the weather.

All children under the age of 7 qualify for a free school meal. We encourage all families to take advantage of our delicious menu!

