

# Team structure



**Caroline Blanckley-Sharp**  
**SENCo**

*Associate Assistant Headteacher*



**Lindsay Astbury TA3**  
**KS3 Support Coordinator**

Student Support Coordinator  
EHCP/MSP Coordinator  
Autism Champion



**Debbie Plaxton HLTA**  
**KS4 Support Coordinator**

Student Support Coordinator  
Exams Access Arrangements Coordinator  
Prince's Trust Tutor



**Jackie Johnson TA3**  
**KS3 Progress and Literacy Coordinator**

Lexia/ Spellzone Coordinator



**Anne Strudwick TA3**  
**KS5 Support Coordinator**

ASC Mentor  
ELSA LEAD



**Fiona Savine TA3**  
**KS3 Literacy Progress and EAA**  
**Assistant**

Literacy Catch Up



**Amy Taylor TA3**  
**Student Support and Progress Coordinator**  
**KS3 and KS4 - Link Pastoral Support**

Emotional Literacy specialism  
Behaviour Support specialism

*Key members of the TA team have received the training for Literacy and/or Numeracy interventions and the TA team receive regular training from the SENCO, Specialist Teaching Team and CYC Specialist TAs.*

*TAs receive training bespoke to the students they support as needed from the SENCO and CYC Specialist Teaching Teams*

# Teaching Assistant Team



Tegan Barrett



Sally Gatenby



Catherine Toase



Juliet Bray



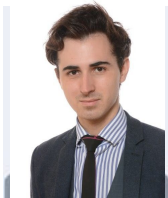
Dominic Jinks



Elaine Ward



Elizabeth Garner



Patrick McGovern



Dave Wiffen



Kate Garry



Vaunda Powell



Rachel Zaino