



Marden High School

NHS
Test and Trace

Rapid Testing of Students at Home

This guide contains information and should be read in conjunction with the [letter for parents](#) and [privacy notice](#). Home test kits and a copy of the **new Instructions for Use** will start to be rolled out to students this week. All test kits have to be signed for and a record of batch numbers kept.

Test should be carried out before school on a Monday and Thursday morning, they can be done the evening before if this is more convenient.

The Covid Coordinator for Marden High School is Sonia Thompson

Who is being tested and why?

Testing is important because you could be carrying the virus and may spread it to others. Testing all staff and pupils of secondary age and above (11+) without symptoms will support the education sector to continue to operate.

Simple and quick tests using antigen Lateral Flow Devices (LFD) enable the rapid testing of staff and secondary age pupils and students, from their home, without the need for a laboratory. Education settings will be provided with these test kits to distribute to their staff and students so that they can conduct testing at home.

Testing will help to break chains of transmission

You will need to:

- carry out twice weekly testing at home (3 to 4 days apart) before coming into the education setting in the morning
- maintain 'hand-face-space'

IMPORTANT: Tests are only for the use of the person assigned the kits, they should not be taken by anyone else.

Lateral Flow Testing

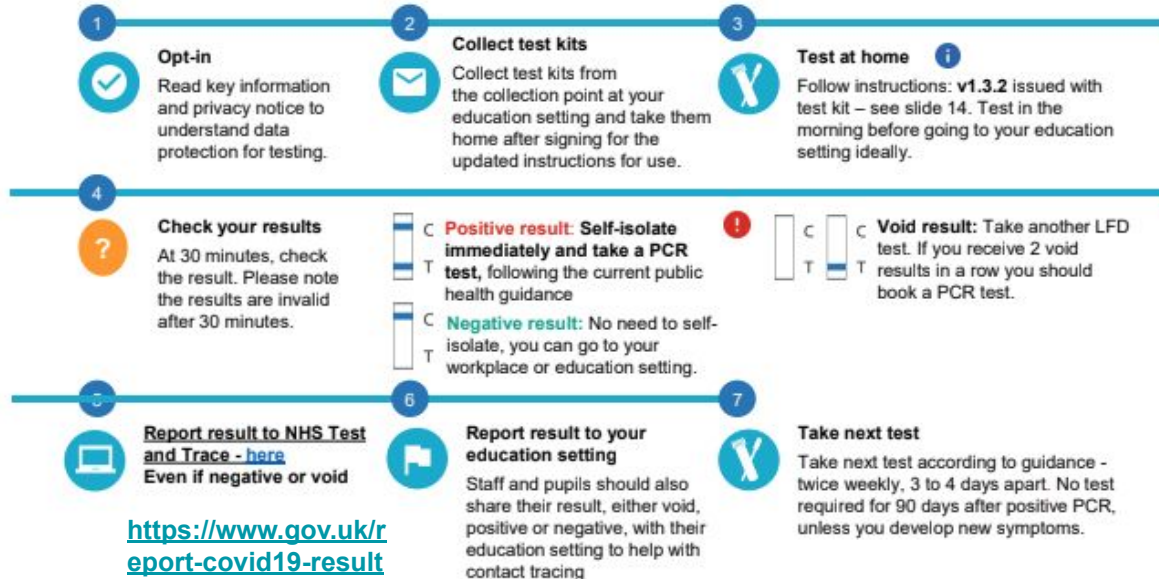


- Accessible and easy to use
- No lab required, with fast results
- Safe technology



This asymptomatic testing programme does not replace current guidance for those with symptoms or those identified as a close contact of a positive case. Anyone with symptoms, whether they are involved in this programme or not, should book [a free NHS test](#) and follow government self-isolation guidance until the results of their test are known. Testing also does not replace basic preventative measures such as regular handwashing, PPE and social distancing.

Testing at home – the process



i It is recommended that you **test yourself in the morning** before attending your education setting (so there is less chance you get infected between taking the test and attending the setting). However, you may choose to do the testing the evening before, especially the first time, to give you more time to get accustomed to the test, and to have more time for your education setting to react to a positive test result.

! If you receive a positive LFD result you should [book a confirmatory PCR test](#). We would advise visiting a community or drive through test site as this is the quickest way to get tested, or you can order a home test kit. It is important that you self-isolate until the result of your PCR test.

<https://www.gov.uk/get-coronavirus-test>

Four easy stages of a rapid COVID-19 self-test

NHS
Test and Trace



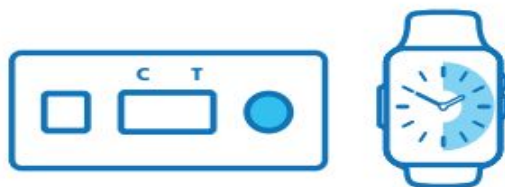
1 **Set-up:** sanitise testing area and hands, unpack kit, read instructions



2 **Swab:** throat then nose



3 **Process test:** place swab in liquid in tube, squeeze liquid onto test device



4 **Read result:** ensure test device is on a flat surface, wait and read result at 30 minutes

UK Government

NHS
Test and Trace

Testing yourself for coronavirus

A pupils and parents' guide
to the rapid lateral flow test.

[Link to guide](#)

Key questions

- ? Why are we testing people without symptoms of COVID-19?**
Up to one in three people who have coronavirus (COVID-19) do not display any symptoms.
- ? Is this compulsory?**
Testing is voluntary, and you should not be prevented from going into the education setting if you do not take part. The success of this public health measure depends on as many people participating as possible.
- ? Can children and young people swab themselves?**
No children below the age of 11 should be tested. Secondary pupils aged 11 should have the test administered by an adult, and pupils and students aged 12-17 should be supervised by an adult but can swab themselves.
- ? How often do staff and students need to test?**
Staff and students will test at home on a regular basis (twice per week, 3 to 4 days apart) usually before they come into the education setting.
- ? How effective are these tests?**
LFD tests have been widely and successfully used to detect asymptomatic COVID-19 cases. The speed and convenience of the tests supports the detection of the virus in asymptomatic individuals, who would not otherwise have got tested. LFD tests are approved by the Medicines and Healthcare products Regulatory Agency (MHRA). The tests are highly specific, with low chances of false positives. They are also very sensitive and able to identify the majority of the most infectious yet asymptomatic individuals. It is important to remember that these tests are an additional layer of health protection measure in addition to hand washing, face covering and social distancing.
- ? Where do I get my test kits?**
You can collect your test kits from the education setting that you work at or attend. Test kits were delivered to primary schools and school-based nurseries in January. Test kits will be delivered to other settings from 24 February, and to PVI nurseries from mid-March.
- ? Are all staff included in the testing programme, or only teaching staff?**
Enough test kits are being supplied for all staff on-site, including nursery and support staff, such as those responsible for running breakfast and after-school clubs.

Participation and Data Protection

All participation in testing is voluntary

Once you have understand the testing process and have read the privacy notice, if you choose to participate you are committing to self-administer the test and report your results via the NHS Test & Trace digital platform and to your education setting.

Before taking your test, you must do three things:

1. Read the **privacy notice** to understand what will happen with your data.
2. Take a copy of the new **Instructions for Use** v1.3.2 and ensure it is the correct version
3. Record your details in the Test Kit Log (see following slide for details)



People who decline to participate in this testing programme should follow the usual national guidelines on self-isolation and [get tested](#) if they show symptoms.

By collecting and opening the test at home kits the individual gives medical consent and is legally committed to reporting their results via the NHS Test and Trace reporting system. There is no need for additional consent to be given,



How do you report your test result online

You are required to [report the results of your tests online, or by phone](#), every time you take a test, even if the result was negative or void.

Education settings are not able to view the results that their staff and students have uploaded to the online service.

You should therefore also communicate results separately with your education setting, so that they can respond accordingly.

Education settings should record those results

There will be a Google form to complete after every test..

You MUST inform school of a POSITIVE results immediately.

Report a COVID-19 test result

Use this service to report your result to the NHS after using a coronavirus (COVID-19) lateral flow test kit.

A lateral flow test is a coronavirus test you do yourself. It shows you the result on a handheld device that comes with the test.

Report the result:

- every time you use a lateral flow test kit
- as soon as possible after you get the result

You cannot report a result after more than 24 hours.

[Start now >](#)

Useful links

Record your result - <https://www.gov.uk/report-covid19-result>

Book a PCR test - <https://www.gov.uk/get-coronavirus-test>

Report to school - [Student COVID-19 LFD test results](#)

'How to' video - [Click here for a guide on how to test at home](#)

If a test is 'spoiled' it should be recorded as void and a new test taken and recorded.