



Marden High School

Staying Safe in School

We are delighted to welcome you back to our safe and happy school, but as you know, we have had to make some changes to ensure we all stay safe. In order to keep safe, students are now in “year bubbles” during social times, and where possible during the day. We have an increase in cleaning routines and more frequent cleaning of the building and surfaces.

We ***all*** have a responsibility to follow hygiene measures and play our part in keeping ***each other*** safe and healthy.

What do we need to do?





- Students in each year are in a “bubble” and will follow increased hygiene routines
- Years 10 and 11 come into school at 8.40 **where possible** and go straight to your year bubble zone.
- Years 7, 8 and 9 come in at 8.30 **where possible** and go straight to your year bubble zone.
- Members of staff on duty will direct you to your form room at 8:45.
- You should wear full uniform, unless you have PE that day, then you will come to school in your PE kit.
- You should always have a reading book with you.
- You should bring your own stationery and a bag large enough to carry your equipment and A4 size exercise books in.
- For students who cycle to school, the bike sheds at the front of the building are for Year 7, 8 and 9 students. Year 10 and 11 students should bring a bike lock with them and should bring their bike round to the East yard.



Each bubble has its own zone - where do I go before school?

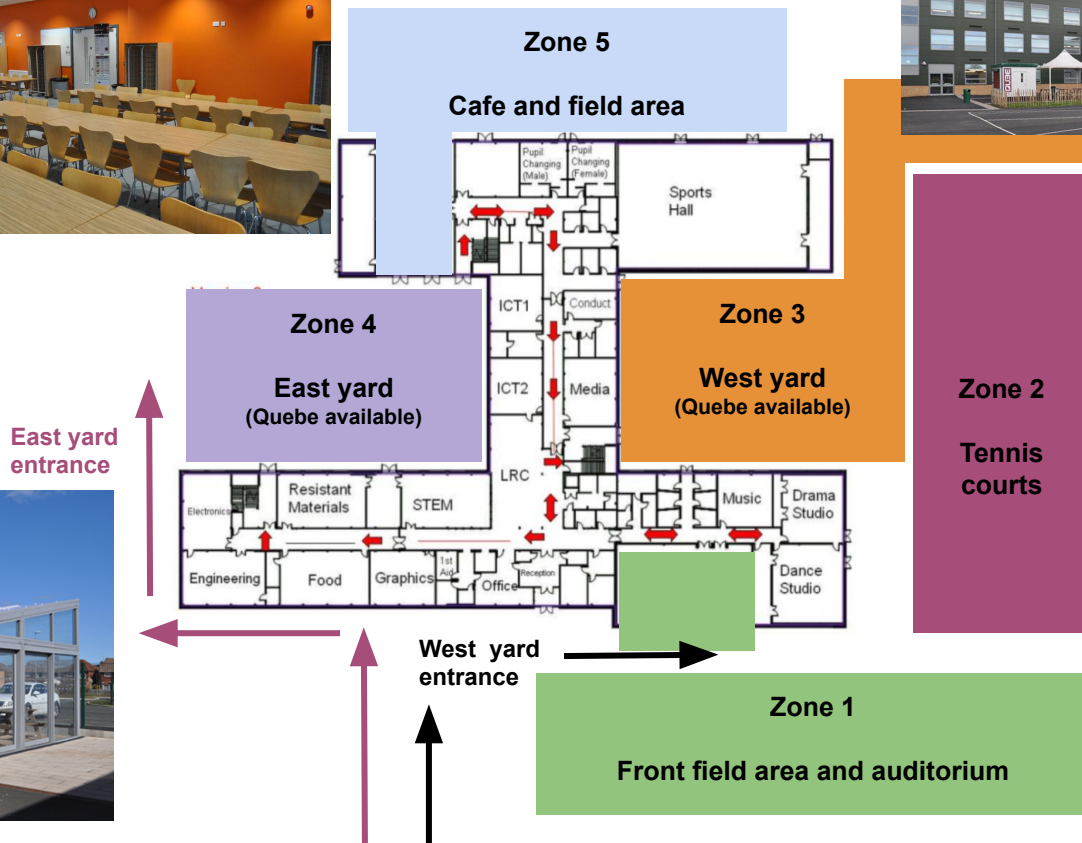
Year group bubble	Arrive	Entry through	Zone
Year 11	8.40	East yard entrance	Zone 5 - Cafe and field area
Year 10	8.40	East yard entrance	Zone 4 - East yard
Year 9	8.30	West yard entrance	Zone 3 - West yard
Year 8	8.30	West yard entrance	Zone 2 - Tennis courts
Year 7	8.30	West yard entrance	Zone 1 - Front field

- On arrival, you must stay in your bubble. You should not mix with anybody from the other bubbles.



Marden High School

Where is my bubble zone in the morning and during lunch and break?





- School will not open before 8.30.
- Avoid public transport **where possible**. Where this is not possible, wear a mask.
- Bike sheds will be accessible to Years 7, 8 and 9. Year 10 and 11 should take their bikes to the East Yard. You will need a bike lock.
- We will come into school at different times **where possible**.
- Years 10 and 11 come into school at 8.40 **where possible** and go straight to your year bubble zone .
- Years 7,8, and 9 come in at 8.30 **where possible** and go straight to your year bubble zone, using the west yard entrance.
- On the first day Year 7 need to go to the auditorium and sit in your form.
- Year 10 and 11 come into school on the first bell at 8.43 and go straight to their year bubble using the east yard entrance.
- Year 7, 8 and 9 come in at 8.45 on the second bell. Year 7 use the auditorium entrance. Year 8 use the doors next to the LRC stairs and Year 9 use the door next to Mrs Atkinson's office.
- Years 10 and 11 use the entrance at the cafe. You will be told when you can come in by a member of duty staff.



- Break has become longer (25 minutes) and lunch shorter (30 minutes).
- These will be staggered for Year 7, 8 and 9 and for Year 10 and 11.
- You can eat lunch at either break or lunch. You will have access to a food Qube (East and West yards) or the cafe. All food outlets will provide the same food choices.
- Sanitise your hands at the start and end of breaks and after going to the toilet.
- You must stay in your bubble zone unless to go to the toilet
- Avoid bringing anything in to school from home that is not necessary- eg. basketballs and footballs. This will be reviewed throughout the year.

Year group bubble	Break	Lunch	Bubble zone
Year 11	10.10 - 10.35	12.40 - 1.10	Zone 5 - Cafe and field area
Year 10	10.10 - 10.35	12.40 - 1.10	Zone 4 - East yard
Year 9	11.10 - 11.35	1.40 - 2.10	Zone 5 - Cafe and field area
Year 8	11.10 - 11.35	1.40 - 2.10	Zone 4 - East yard
Year 7	11.10 - 11.35	1.40 - 2.10	Zone 3 - West yard

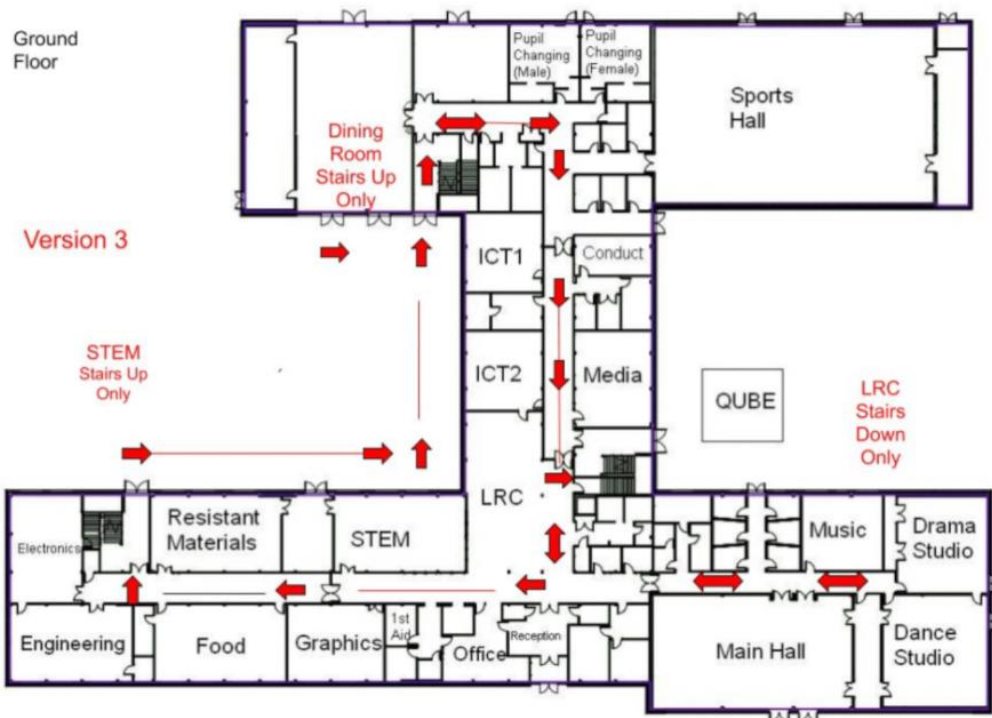


11	Arrive 8:40 Z5	Reg 8:45- 9:10	P1 9:10-10:10	Break 10:10-10:35 Z5	P2 10:35-11:35	P3 11:40-12:40	Lunch 12:40-1:10 Z5	P4 1:10-2:10	P5 2:15-3:15
10	Arrive 8:40 Z4	Reg 8:45- 9:10	P1 9:10-10:10	Break 10:10-10:35 Z4	P2 10:35-11:35	P3 11:40-12:40	Lunch 12:40-1:10 Z4	P4 1:10-2:10	P5 2:15-3:15
9	Arrive 8:30 Z3	Reg 8:45- 9:10	P1 9:10-10:10	P2 10:10-11:10	Break 11:10-11:35 Z5	P3 11:40-12:40	P4 12:40-1:40	Lunch 1:40-2:10 Z5	P5 2:15-3:10
8	Arrive 8:30 Z2	Reg 8:45- 9:10	P1 9:10-10:10	P2 10:10-11:10	Break 11:10-11:35 Z4	P3 11:40-12:40	P4 12:40-1:40	Lunch 1:40-2:10 Z4	P5 2:15-3:10
7	Arrive 8:30 Z1	Reg 8:45- 9:10	P1 9:10-10:10	P2 10:10-11:10	Break 11:10-11:35 Z3	P3 11:40-12:40	P4 12:40-1:40	Lunch 1:40-2:10 Z3	P5 2:15-3:10

Z1 = ZONE 1, Z2 = ZONE 2, Z3 = ZONE 3, Z4= ZONE 4, Z5 = ZONE 5



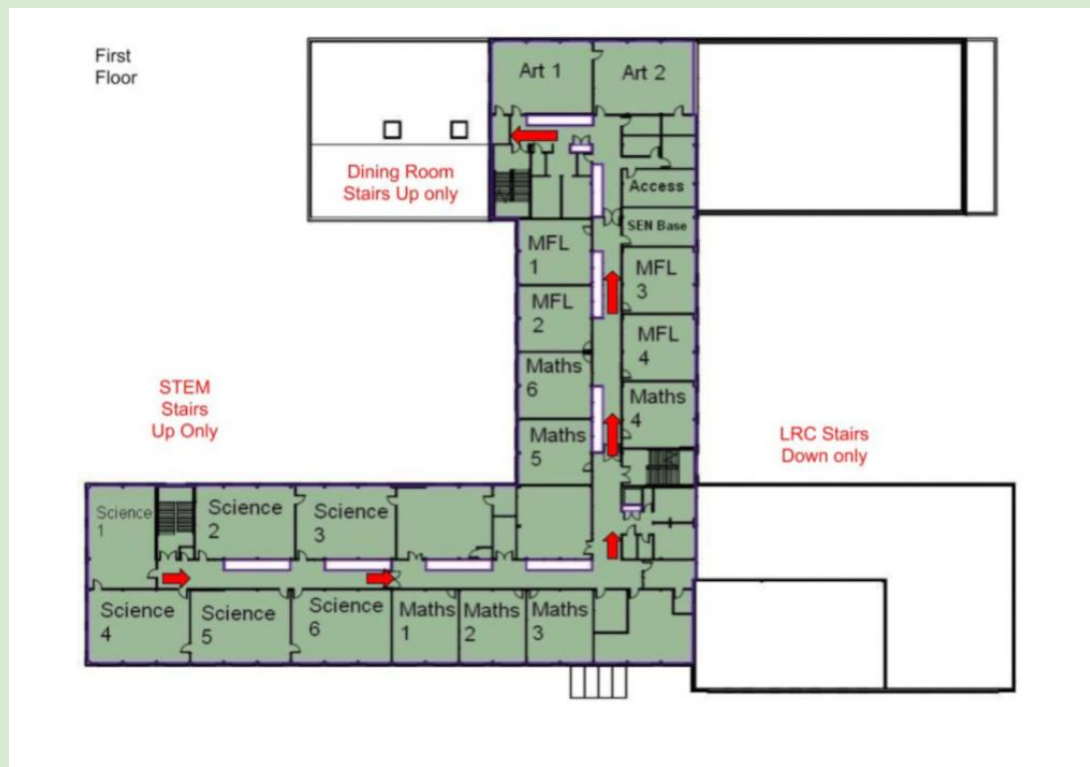
- We have a one way system to help us move around the building safely
- Wear your face covering so we can all help protect each other.
- Keep a **respectful** distance to others- use the markers on the floor as a guide. Don't push or rush. Take your time.
- When you arrive at your lesson go straight into the classroom. There is no need to wait in the corridor, except for outside Science labs and Technology rooms unless there is a teacher there.
- If you need to go to the toilet, make sure you wash your hands for at least 20 seconds. You should use the toilets nearest to you on the way to break and lunchtime. Do not gather with friends.
- You can access your locker on the way to lunch or break, as long as it is on the one way system. Don't go with a group of friends.
- Sanitise your hands as you travel.



Remember to follow the green arrows on the floor!

Ground floor:

- Dining room
- Sports hall
- ICT rooms
- Media studio
- Music
- Dance studio
- Drama room
- Auditorium
- STEM
- Engineering
- Graphics
- Electronics
- Food
- LRC
- School office
- Toilets



First floor:

- Art
- Access
- SEN base
- MFL
- Maths
- Science
- Toilets

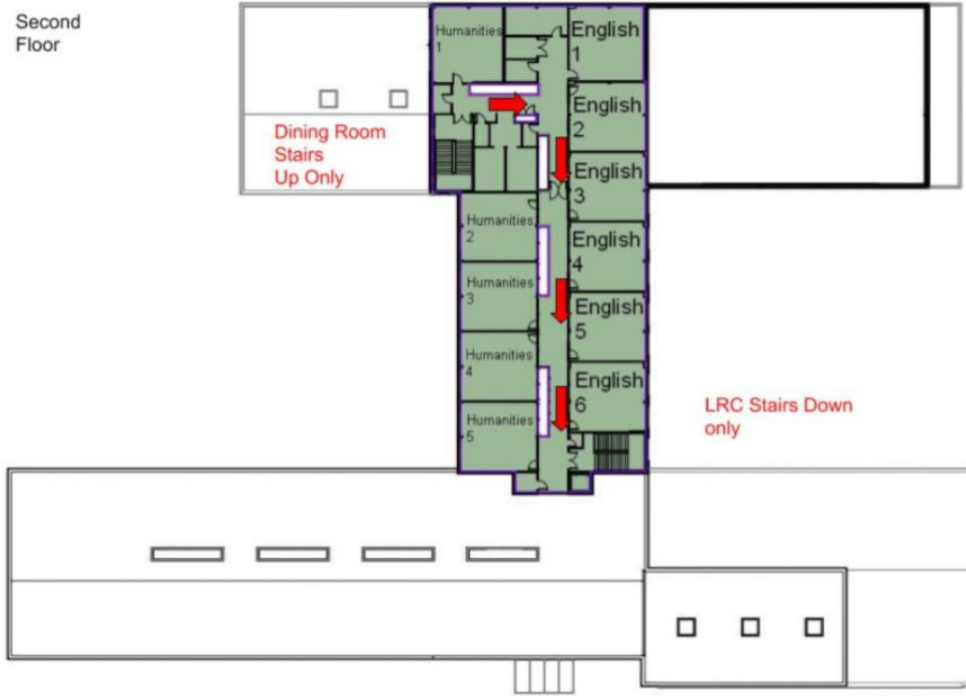
Remember to follow the green arrows on the floor!



Marden High School

Travelling between lessons - one way system

Second Floor



Remember to follow the green arrows on the floor!

Second floor:

- English
- Humanities:
- RE
- Geography
- History
- Toilets





- When we arrive, we sanitise our hands when we come in.
- We read our reading books, or read through feedback in our books.
- We use our own resources. Everyone **must** bring their **OWN** pens, pencils, rulers, rubbers, calculator. We will not be sharing our equipment, as this will increase the risk of infection, so we have a responsibility to make sure we bring our own in every day.
- We sit in rows in classrooms, where possible. IT and Technology classrooms have been modified with perspex screens where appropriate.
- We take our books home and we make sure we bring it back every lesson. Your book is your own responsibility. Remember to bring it to every lesson.
- On the days you have PE, you can come in to school in your PE kit and remain in it all day. You will go to the sports hall to register for your PE lesson. You can leave your bag at the side of the Sports Hall.



Hygiene

- Wash your hands with soap regularly throughout the school day for at least twenty seconds. This should include after travelling, after going to the toilet, after sneezing, before and after eating food, after touching surfaces.
- Sanitise your hands as you enter and leave a classroom.
- Try not to touch your eyes, nose or mouth, especially if you haven't washed your hands recently.
- If you need to sneeze, use a tissue. If you don't have a tissue, sneeze into your elbow, NOT your hand.
- Throw the tissue into the pedal bins. Do not touch the bin with your hand
- Cover your mouth and nose if you cough.
- Keep a respectful distance from others - at least arm's length where possible.
- Do not share equipment.
- Avoid being face to face with others.



Marden High School

Respectful distancing

- Keep at least arm's length away from students and staff, where possible.
- Think about your physical space. Use the markers on the floor as a guide to safe distances from others.
- Don't hug, high five or shake hands.
- Avoid being face-to-face.
- Move slowly and calmly around the building.
- If you need to sneeze, remember to do so into a tissue or into your elbow. Wash your hands afterwards.
- Avoid students who are not in your bubble, where possible.
- Stay in your own bubble zone.



Marden High School

After school

- Year 7, 8 and 9 leave school at 3.10.
- Years 10 and 11 leave school leave at 3.15.
- We have a clear space zone at the gates so we do not wait in this area. We go home promptly.
- At present, there will be no after school activities.
- The LRC is unavailable.





- For the 2020/21 academic year, we are calling “catch-up” MAST: *Marden Achieving Success Together*.
- Each student will have a post closure action plan. These will be monitored by tutors and will contain any actions students need to take to catch up.
- Students in need of intervention following lockdown, will be identified in the first half term and either in class intervention or after school catch-up sessions will be organised.



- Exercise books must remain in school and with classroom teachers at all times.
- Teachers will not take exercise books home to mark. Marking will take place in school.
- Homework will be set on Google Classroom. Click the Google Classroom icon at the top of our homepage to access your lessons.

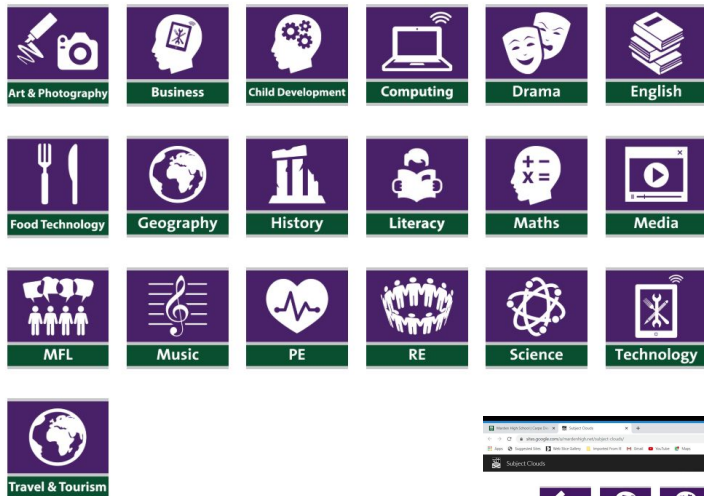




- So that we best support students in maintaining their high standards at Marden High School we are altering the running of detentions from 3rd September 2020.
- During the school day, if a student is given detention, it will be held on the same day, from 3:15pm until 3:30pm with their Head of Year, in Year bubbles. This includes detentions for behaviour, lateness and homework.
- The member of staff who teaches the student Period 5 will walk them to their Head of Year who will oversee those who have detention in their year group for the 15 minutes.
- The time spent will be restorative, discussing 1:1 how best to avoid similar sanctions in future. It is expected that the students being walked by their teacher to detention do so calmly and safely and that during their detention, time is spent working with their Head of Year to take responsibility for their actions and building their sense of belonging by making amends (e.g. completing missed work).
- A text message will go out to parents / carers at 3pm on the day of the detention so they are aware that their child will be leaving school at 3:30pm.



Subject Clouds



Year 11 - Getting the most out of your options subjects

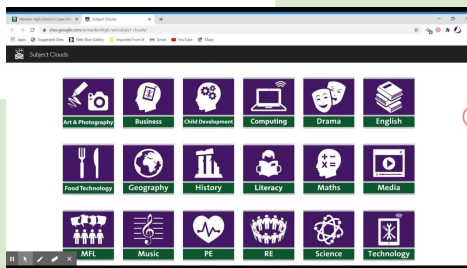
Use the [slides](#) Mr Topping has shared with you to help you to prepare and revise over the summer.

Year 10 - Use the [information](#) sent out with your options choices to prepare over the summer.

Please email s.proud@mardenhigh.net if you wish to purchase KS4 revision books before the summer. The price list is [here](#).

KS3: Some core revision books for KS3 are also available to buy.

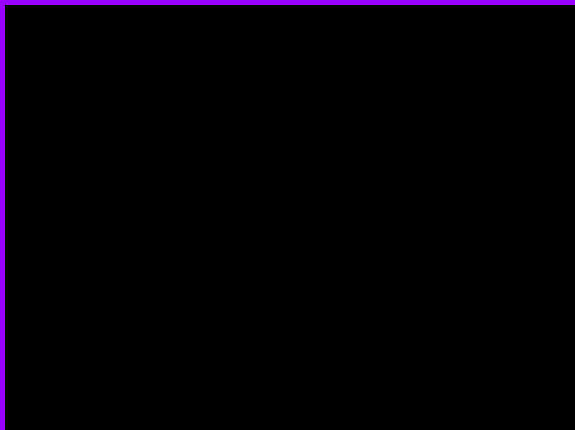
All year groups: Use the subject cloud to explore content, access links and develop skills.





Marden High School

Blended Learning



HOME
LEARNING

TRANSITION
2020/2021

