



Follow us on Instagram: https://www.instagram.com/egs_6thform/

Enfield Grammar School Sixth Form

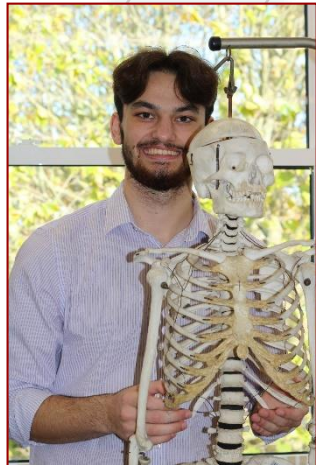
Yr11 into 12

Sixth Form and Post-16

Open Evening

11 November 2025

Parent Presentations at 5.45pm and 6.45pm



"To inspire, challenge and support, every individual sixth form student toward raising, achieving and exceeding their personal and academic aspirations, every day.

Tant Que Je Puis"

Sixth Form Vision

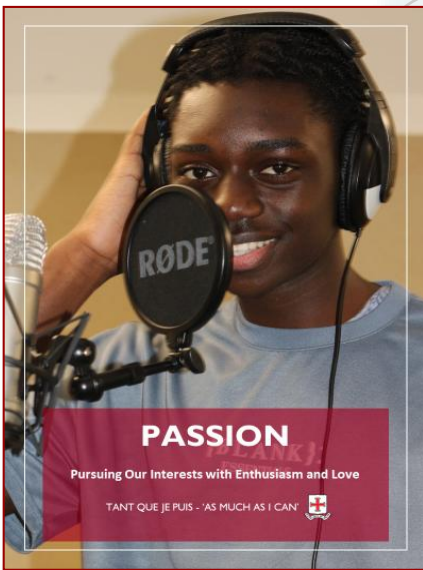
Tant Que Je Puis

Founded 1558



Enfield Grammar School

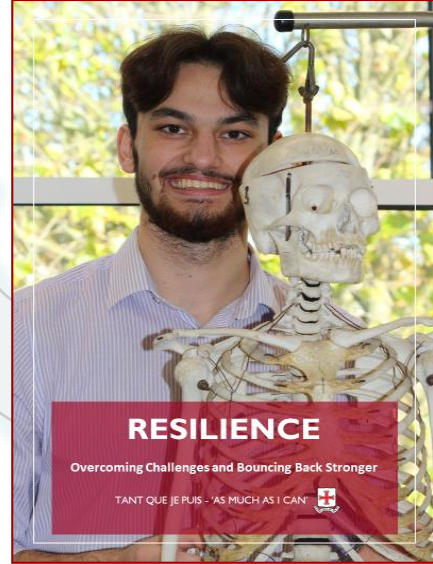




PASSION

Pursuing Our Interests with Enthusiasm and Love

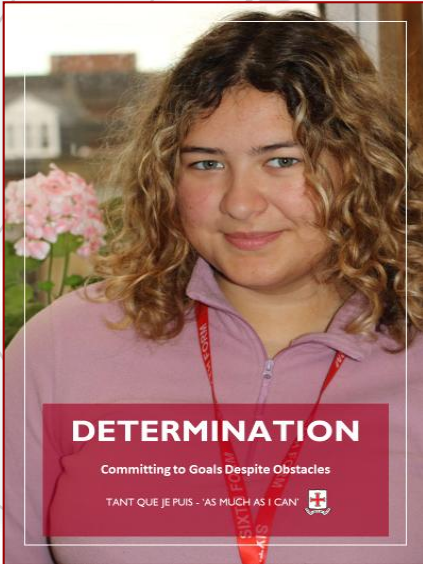
TANT QUE JE PUIS - 'AS MUCH AS I CAN' 



RESILIENCE

Overcoming Challenges and Bouncing Back Stronger

TANT QUE JE PUIS - 'AS MUCH AS I CAN' 



DETERMINATION


Committing to Goals Despite Obstacles

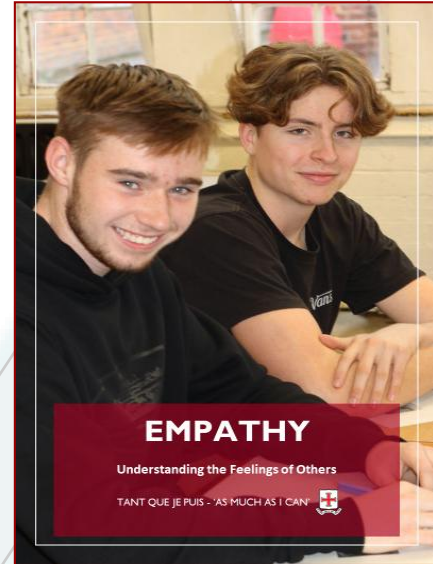
TANT QUE JE PUIS - 'AS MUCH AS I CAN' 



INTEGRITY

Acting with Honesty and Strong Moral Principles

TANT QUE JE PUIS - 'AS MUCH AS I CAN' 



EMPATHY

Understanding the Feelings of Others

TANT QUE JE PUIS - 'AS MUCH AS I CAN' 



Enfield Grammar School Sixth Form

PASSION | RESILIENCE | INTEGRITY | DETERMINATION | EMPATHY

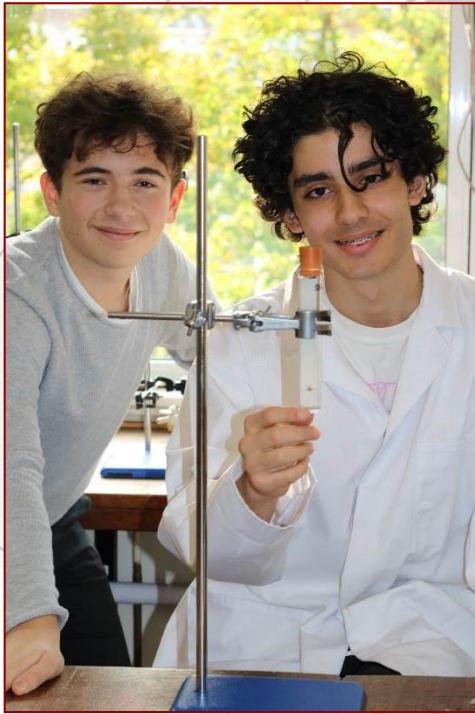


Chris Lamb - Headteacher



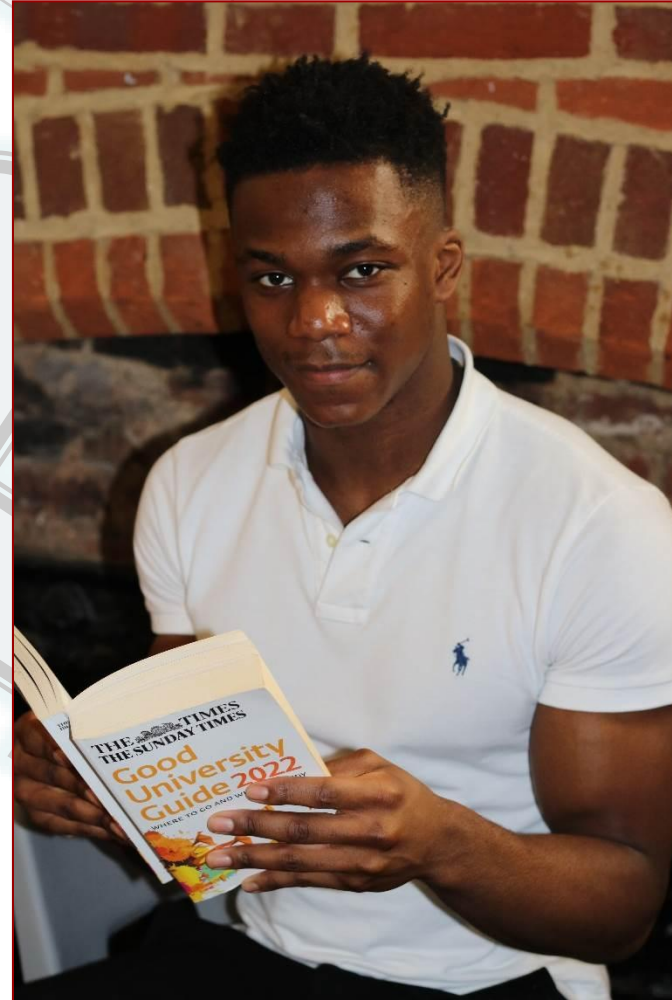
Choosing your post-16 options

Should I stay or should I go?



Outstanding Provision

We offer a full range of qualifications – it's a comprehensive offer.



Tant Que Je Puis

Founded 1558



Enfield Grammar School



Outstanding Enrichment

*Lots and lots
of
opportunities
to do more
than just
subjects*



Tant Que Je Puis

Founded 1558



Enfield Grammar School

Outstanding Relationships

*This is what
EGS 6th Form is
best at.....*



Tant Que Je Puis

Founded 1558



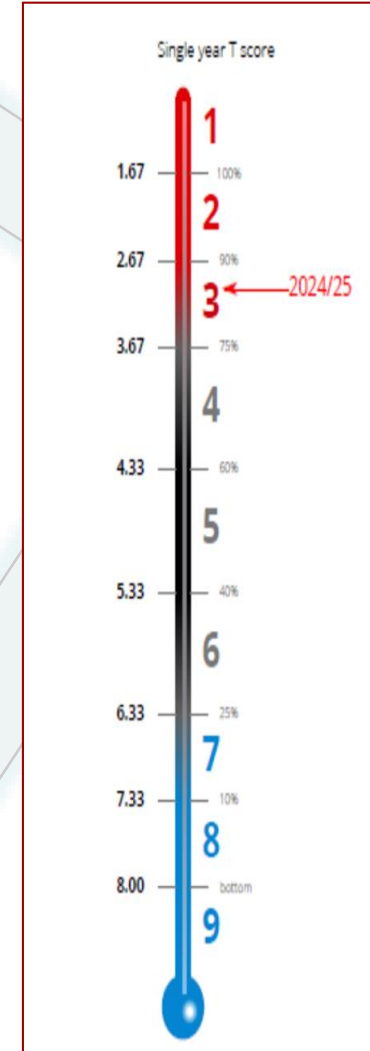
Enfield Grammar School



Why Choose EGS Sixth Form?



- EGS is in the top 20% of Schools Nationally for Sixth Form.
- 77% of Students achieved their first choice university.
- All Year 12 students are gifted a free Chromebook.
- UpLearn is provided for all STEM subjects.



Sixth Form and Post-16 Open Evening 11 November 2025

Enfield Grammar School Sixth Form



Application Timeline

- Open night, assembly and EGS student Parent Consultations to review courses available and student suitability.
- Application open this week - **EGS students will receive an email with login details.** External students should register on the Applica website. Deadline 28 February 2026. All applications online.
- Course meetings will take place after the final application deadline with SLT (March 2026).
- We will then make conditional offers in April 2026.
- Transition days for all students with conditional offers in July.
- Results day (**20 August 2026**) where courses will be confirmed.



Where to get more information

- Subject overviews , specifications and talking to teachers.
- Entry requirements are important; they ensure that you have the potential to be successful on courses.



Founded 1558

Enfield Grammar School Sixth Form

ENFIELD GRAMMAR SCHOOL SIXTH FORM
Subject Specific Entry Requirements | September 2026

To study A-level courses, students are required to attain at least five grade 5 GCSEs including English Language and Mathematics in addition to the individual subject entry requirements below.

To study L3 BTEC courses, students are required to attain at least five grade 4 GCSEs including a GCSE grade 4 in English Language or Mathematics.

Subject	GCSE Grade Criteria
Applied Science (BTEC L3)	Grade 4-4 in Science
Biology (AS in Year 12)	Grade 6-6 in Science
Business Studies	Grade 5 Business Studies (if studied at GCSE)
Business Studies (BTEC L3)	Grade 4 in Business Studies (if studied at GCSE)
Chemistry (AS in Year 12)	Grade 6-6 in Science
Computer Science	Grade 6 in Computer Science if studied at GCSE or experience of computer coding.
Creative Digital Media (BTEC L3)	5 GCSEs grades 9-4
Economics	Grade 6 in English and Maths
English Literature	Grade 6 in English Literature
Design & Technology (Product Design)	Grade 5 in Design and Technology (if studied at GCSE)
Engineering (BTEC L3)	5 GCSEs grades 9-4
Geography	Grade 6 in English or Humanities
Government and Politics	Grade 6 in English or Humanities
History	Grade 5 in History
IT (BTEC L3)	5 GCSEs grades 9-4
Mathematics (AS in Year 12)	Grade 6 in Mathematics and a successful pass internal entry examination
Further Mathematics	Grade 8 in Mathematics
Media Studies	Grade 5 in Media (if studied at GCSE)) or English
Medical Sciences (BTEC L3)	Grade 4-4 in Science
Music	Grade 6 in Music
Music Technology	Grade 5 in Music
Philosophy and Ethics	Grade 6 in a Humanities subject
PE	Grade 6 in PE or Grade 6 in Science
Physics (AS in Year 12)	Grade 6-6 in Science
Psychology (AS in Year 12)	Grade 6 in Science and English
Sport (BTEC L3)	Grade 4 in PE (if studied at GCSE)
Travel and Tourism (BTEC L3) TBC	5 GCSEs grades 9-4

PASSION | RESILIENCE | INTEGRITY | DETERMINATION | EMPATHY

Enfield Grammar School Academy Trust

Post-16 Subject Information Booklet (A Level)

Prestigious Past; Bright Future

Enfield Grammar School Sixth Form and Post-16 Open Evening 2025

EGS Sixth Form Headteacher Presentation - 17.45-18.10 and 18.45-19.10 (Main Hall)

Please register here for further information:

Please use the map for directions - see reverse for subject locations

Post 16 Presentations:

- Low Pathways - 17.30-17.40 (Tudor Hall)
- Medicine Pathways - 17.30-17.40 (Common Room)
- Choosing the right subjects - 17.45-18.09 and 18.45-19.05 (Tudor Hall)
- Vocational Pathways - 17.45-18.05 and 18.45-19.05 (Common Room)
- A Level Alternatives - 17.30 and 18.30 (Tudor Hall)
- STEM Pathways - 18.15 - 18.30 (Tudor Hall)
- Cape Manor Courses - 18.15 - 18.30 (Common Room)
- Apprenticeships - 18.15-19.30 (Common Room)
- Thinking about "Oxbridge" - 19.15-19.30 (Tudor Hall)

Rm 13 FEQS Refreshments



Founded 1558



Enfield Grammar School Sixth Form



SUCCESSFUL



AMBITIOUS



CONFIDENT

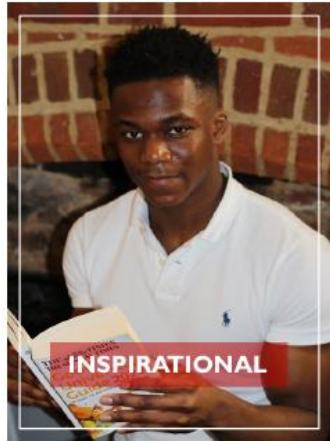


ACADEMIC

Prestigious past; bright future



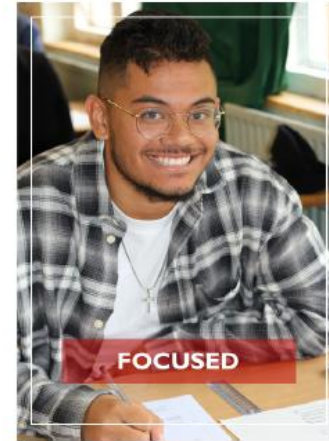
COLLABORATIVE



INSPIRATIONAL



VALUED



FOCUSED

Tant Que Je Puis



GRAMMAR CULTURE CLUB

