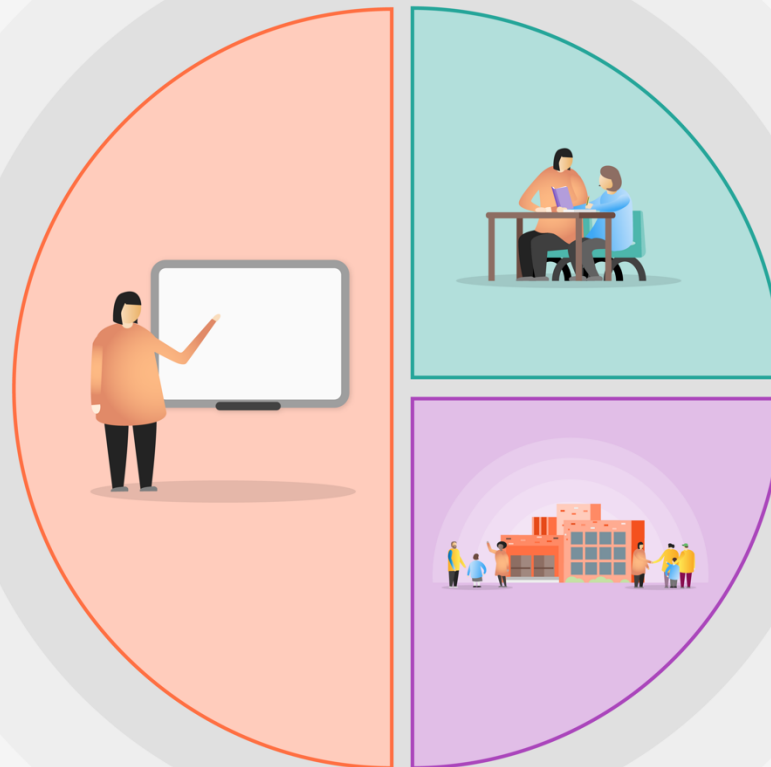


1 Teaching

- Quality first teaching is the most important lever to improve outcomes for our pupils
- Baseline formative assessment to address gaps in learning and inform future planning
- Recovery curriculum planned to the needs of the individual children. Staff to use “Ready to progress” materials provided by Department for Education
- A broad and engaging curriculum that focuses on vocabulary acquisition
- Intensive phonics programme for children in Reception to Year 3
- High quality feedback to make the next steps explicit
- Low stakes assessment until December 2020 so full attention can be given to teaching time
- Smaller class sizes with support to allow Teachers to target disadvantaged pupils and children who have been prioritised for intervention



2 Targeted academic support

- Use Nuffield Early language Intervention (NELI) for 4-5 year olds
- Use National Tutoring Programme for intensive, targeted support for disadvantaged and vulnerable pupil who need the most help to catch up for 5 – 11 year olds
- Same day intervention for pupils

3 Wider strategies

- Lexia to be purchased so all pupils can develop reading skills
- Healthy Minds -Friends Programme to be used in Y4 and Y1
- Family Support worker to providing regular and supportive communications with parent, especially to increase attendance and engagement with learning.