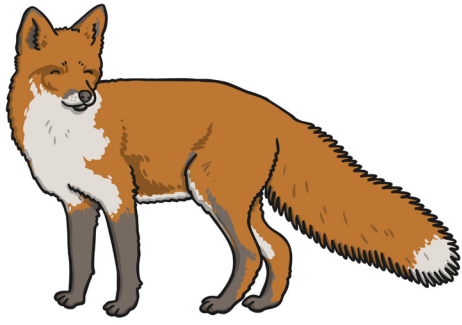




Urban Habitat Classification

Fill in the table with ticks and crosses to show the characteristics of each living thing.

	fox	rat	squirrel	pigeon	slug	woodlouse	dandelion	nettle
Is it a plant?								
has it got legs?								
Is it a vertebrate?								
Does it climb trees?								
Does it have a bushy tail?								
Does it have feathers?								
Does it have a yellow flower?								



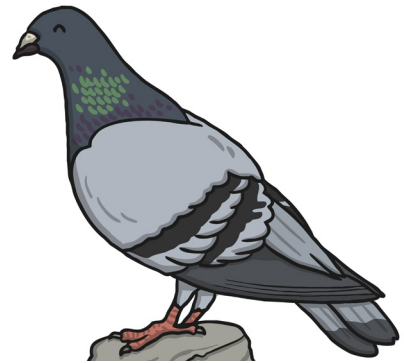
fox



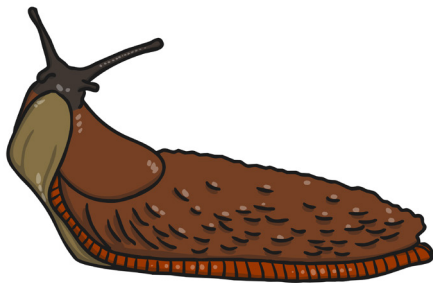
rat



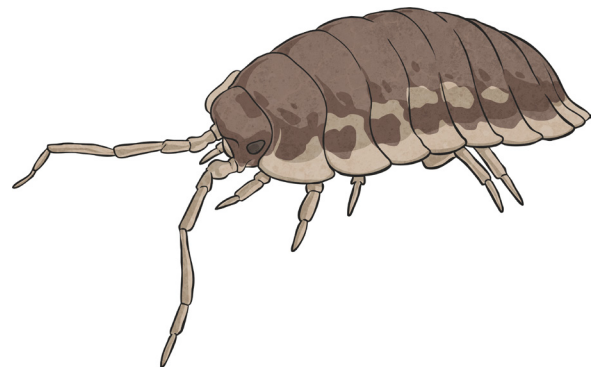
squirrel



pigeon



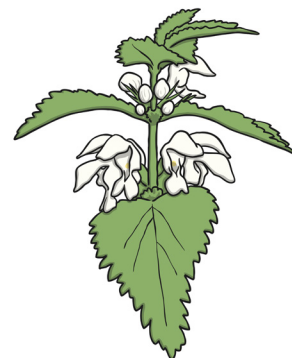
slug



woodlouse



dandelion



nettle

Is it a plant?

Does it have a bushy tail?

Has it got legs?

Does it have feathers?

Is it a vertebrate?

Does it have a yellow flower?

Does it climb trees?

Yes

Yes

Yes

Yes

Yes

Yes

Yes

No

No

No

No

No

No

No