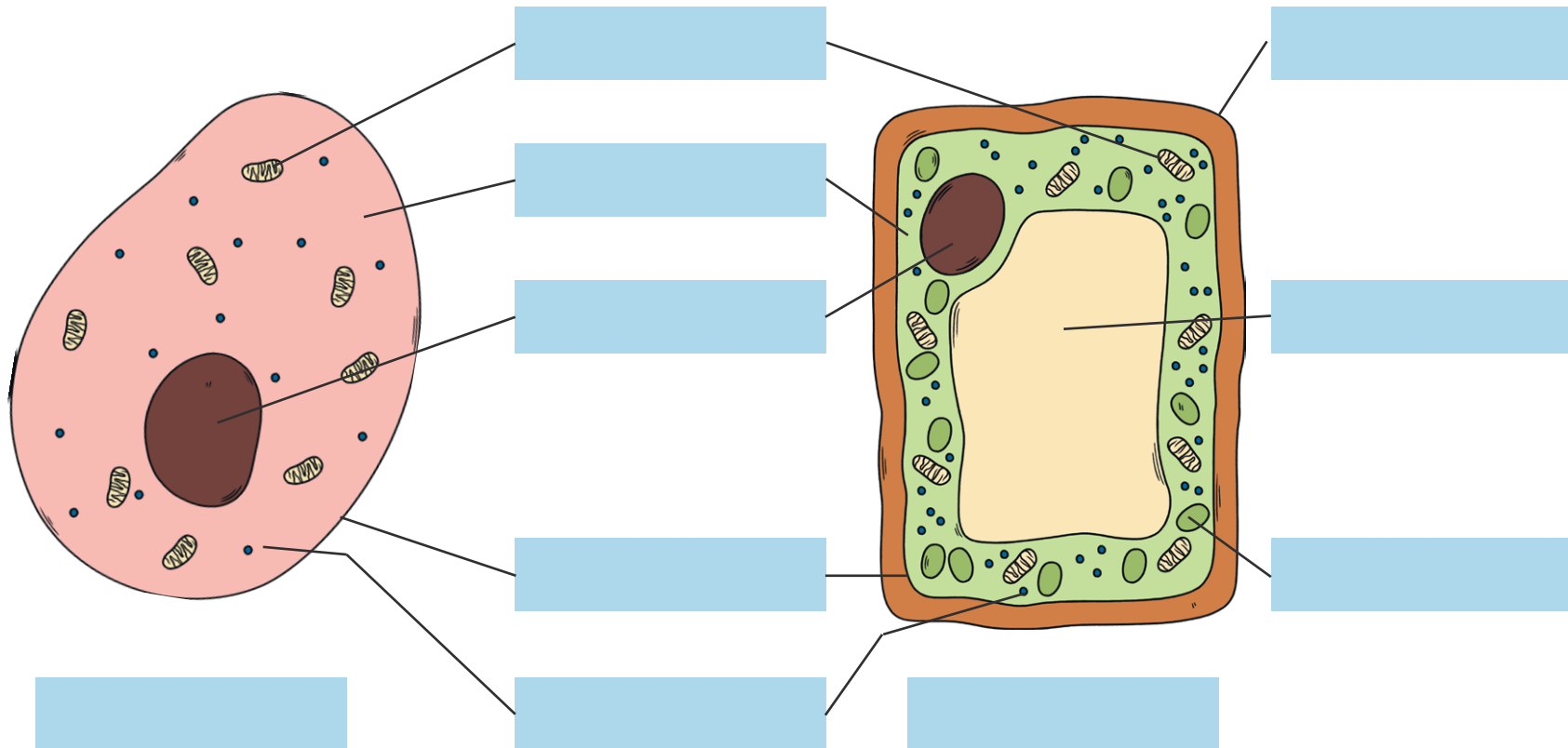


Parts of a Cell Cut and Stick

Cut and stick the labels in the correct place.



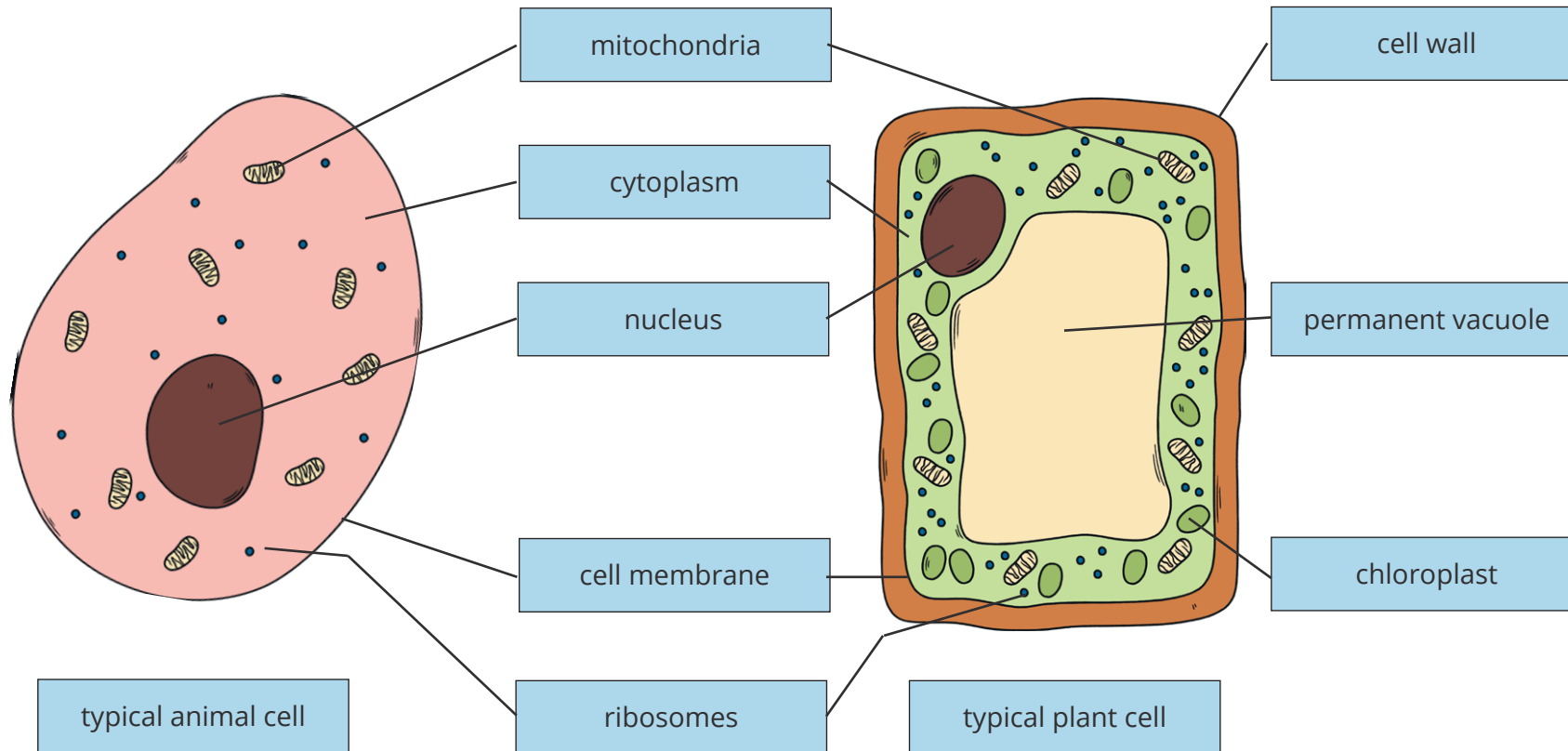
Comparing and Contrasting Cells

Which organelles are found in both typical animal and plant cells?

Which organelles can only be found in a typical plant cell?

Parts of a Cell Cut and Stick - Answer Sheet

Cut and stick the labels in the correct place.



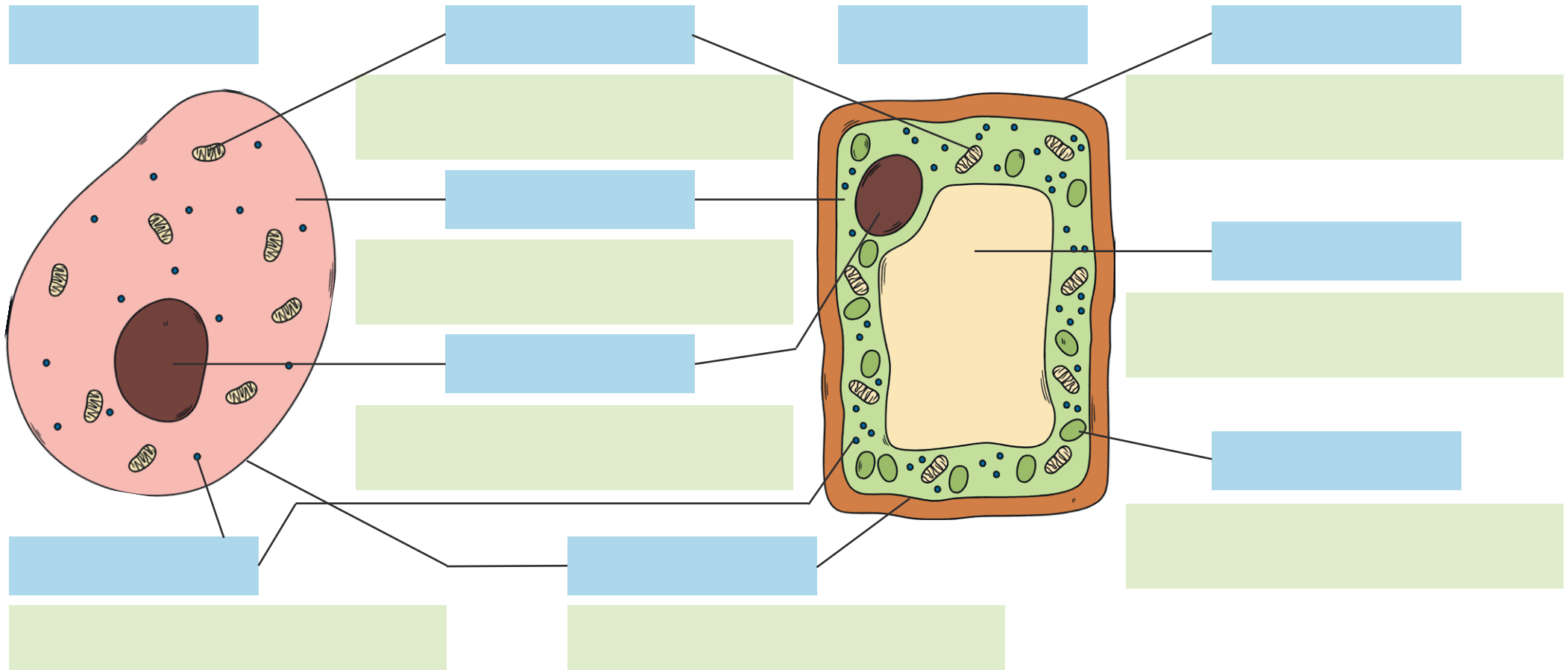
Comparing and Contrasting Cells

Which organelles are found in both typical animal and plant cells? **mitochondria, cytoplasm, nucleus, ribosomes and cell membrane.**

Which organelles can only be found in a typical plant cell? **cell wall, permanent vacuole, chloroplast**

Parts of a Cell Cut and Stick

Cut and stick the labels in the correct place.



Comparing and Contrasting Cells

Which organelles are found in both typical animal and plant cells?

Which organelles can only be found in a typical plant cell?

Parts of a Cell Cut and Stick

Cut and stick the labels in the correct place.
Then match up the part of the cell to the correct function.

permanent vacuole

Helps to keep the cell rigid (stiff).

typical animal cell

Controls the movement of substances
in and out of the cell.

typical plant cell

Contains the chromosomes and controls
the cell.

nucleus

Respiration reactions occur here to
release energy.

cell membrane

Jelly-like substance that fills the cell and
where most chemical reactions occur.

mitochondria

Contains the pigment chlorophyll.

cytoplasm

Contains water to push the cytoplasm
to the outside of the cell.

cell wall

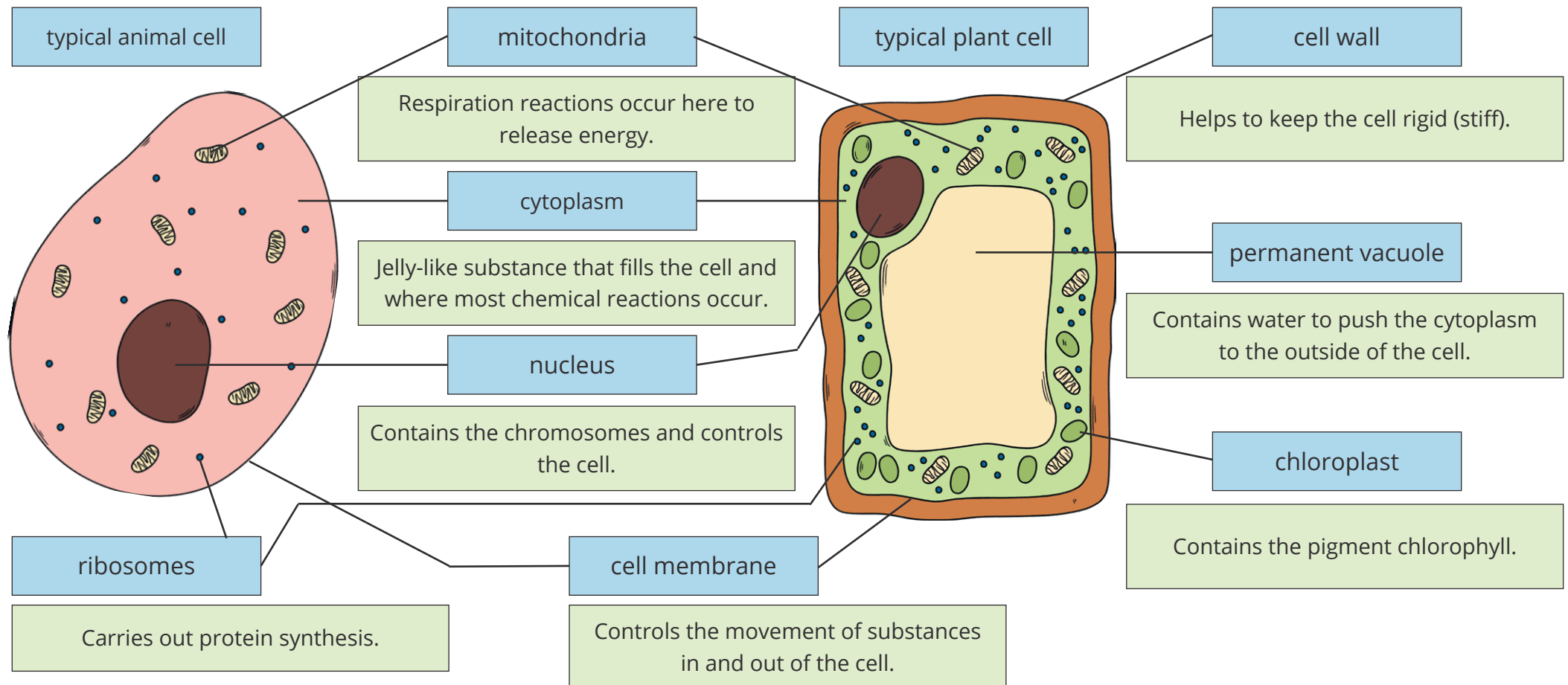
Carries out protein synthesis.

chloroplast

ribosomes

Parts of a Cell Cut and Stick - Answer Sheet

Cut and stick the labels in the correct place.



Comparing and Contrasting Cells

Which organelles are found in both typical animal and plant cells? **mitochondria, cytoplasm, nucleus, ribosomes and cell membrane.**

Which organelles can only be found in a typical plant cell? **cell wall, permanent vacuole, chloroplast**