

Year 6 Transition Parent Information Pack



- [Y6 Transition Checklist](#)
- [About our school](#)
- [School Values - Alperton 4Rs](#)
- [The Year 7 Team](#)
- [School Day](#)
- [School Uniform](#)
- [School Equipment](#)
- [School Attendance](#)
- [School Meals, ParentPay and FSM](#)
- [School-Parent Communication \(MCAS\)](#)
- [Set up MyChildAtSchool \(MCAS\) account](#)
- [Admission Form and Parental Consent](#)
- [No Mobile Phones School Policy](#)
- [ACS Learning Journey](#)
- [Year 7 Curriculum](#)
- [Home Learning](#)
- [Parental Engagement \(PTFA\)](#)

Y6 Transition Checklist

Aspire | Commit | Succeed

- ✓ Accept offer on EAdmission website
- ✓ Attend the **Year 6 Welcome Evening**
- ✓ Attend the **Year 6 Interviews** (Please refer to the email received from us with details about your appointment)
- ✓ **Documentation** (copies of passport, birth certificate, proof of address)
- ✓ Set up your **My Child At School (MCAS)** account
- ✓ **Admissions Form and Parental Consent on MCAS**
- ✓ Attend our **Uniform Outlet** (During the event you will be able to purchase uniform items)
- ✓ Check if your child is eligible for **Free School Meals**
- ✓ Set up a **ParentPay account** to pay for your child's School Meals
- ✓ Attend the **Induction Day**

More information about these steps and other details regarding the transition process can be found on the slides below. If you have any questions, please contact the school office on 0208 902 2038 or email admissions@alperton.brent.sch.uk

Alperton Community School is a remarkable school, where our students are nurtured, challenged and driven to achieve outstanding progress.

Alperton Community School aspires:

- to provide every student with an outstanding education within a supportive, vibrant and stimulating learning environment
- to enable every student to reach their full academic and personal potential by instilling a passion for learning
- to provide a caring, supportive community embracing all cultures and beliefs
- to nurture every student to become a successful adult who will impact positively on their local community and society as a whole

1

READY

- With the highest possible attendance
- On time for every lesson
- Prepared for every lesson
- In full school uniform or following the school dress code

2

RESPECTFUL

- Treat others with the respect you would expect to be treated with
- Follow all instructions diligently when requested
- Take care of each other, the buildings and all equipment

3

RESPONSIBLE

- Follow all rules to keep yourself and others safe
- Do the right thing
- If you are wrong, then own up, apologise and move on
- Set your own goals and work hard to attain them

4

RESILIENT

- Have a GROWTH mindset: your brain gets stronger by making it work
- View a difficulty as a challenge
- Learn from your mistakes so you don't make them again
- Pay particular attention to feedback and learn from others

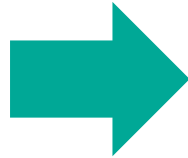
Mrs Ryan	Mr Younis	Ms Fretwell	Pastoral manager	Form tutors
---------------------	----------------------	------------------------	-----------------------------	------------------------

Year 7 Team

- We are here to support you, guide you, and help make sure you have the best possible experience.
- That means we help with lots of things — settling into school, attendance, friendships, behaviour, organisation, worries, achievements, and making sure you feel safe and supported.
- We also work closely with your teachers and families, so that everyone works together to help you succeed.
- The aim of the game is to help every student feel happy, confident, ready to learn, and proud of themselves.
- So if you ever have a problem, need help, or just need someone to talk to, the Year Team is here for you.

School Day

In a typical week, Alperton Community School is open for 33.5 hours. Please see below the timings of the school day



Timings of the School Day

Form Time & PSHE*	8:30 - 9:00
1	9:00 - 10:00
2	10:00 - 11:00
Break	11:00 - 11:30
3	11:30 - 12:30
4	12:30 - 1:30
Lunch	1:30 - 2:15
5	2:15 - 3:15
END OF DAY	3:15

*8:30am Staff Briefing on Monday

Period 6 Lessons (Year 11)	3:15 - 4:15
Period 6 Lessons (Sixth Form)	3:20 - 4:20
PD Mondays	3:15 - 5:00

It is essential that students arrive to school every day in the correct school uniform and with the correct PE Kit. Please note that students may be sent home if they are inappropriately dressed and a text or phone call will be made to the parent/carer

Year 7-11 Uniform

- Black blazer with the **school logo**
- White school shirt (no polo shirts)
- Grey tailored trousers (boys and girls)
- Ankle-length Skirt (for cultural/religious reasons)
- Black leather polishable shoes (No trainers)
- Hijab (Grey, Black, White)
- School Tie (Academic Year 2026-27: Y7 - Blue Tie)

Optional

- Grey jumper with the school logo
- School bag with the school logo

Year 7-11 PE Kit

- Green polo shirt with the **school logo**
- Black jogging bottoms with the **school logo** (No leggings allowed)
- Black or white sports socks
- White trainers with non-marking sole. (No other trainers are allowed)

Optional

- Woollen black hat with the school logo
- Green hooded top with the school logo

Our branded items are sold at: Rumbles Uniform, 598 High Road, London HA0 2AF. Uniforms can be purchased online or in store.

<https://rumblesuniform.co.uk/>



Each student is expected to arrive to all lessons prepared with the necessary equipment and text books for their subjects

School Equipment

- reading book
- calculator
- pencil case with pencils
- graphite pencil (pencil used for drawing)
- pens (preferably black)
- green pens
- eraser
- ruler
- compass
- colouring pencils
- glue stick



All departments will inform you about the required resources you need to bring with you to school. For most subjects, your books are your own responsibility so you should ensure that you label them with your name, form class and subject teacher and look after them.

We would strongly recommend that you get into the habit of preparing your school bag the night before, that way you will not be rushed in the morning and forget anything

It is very important that all our students benefit from 190 days of learning to ensure they make progress and achieve the results they should. It is also very important that your child is punctual and arrives at school on time. Time keeping is important and will be monitored by the Attendance Officer.

Authorised Absence

Authorised Absence is an absence that has been agreed by the school in advance, or justified after, for a pupil of compulsory school age.

The Department of Education has stated that the school may authorise an absence for one of the following reasons:

- If a child has a medical appointment or legitimate meeting
- Too unwell to come to school
- Undertake a religious observance
- Close family bereavement

Unauthorised Absence

Unauthorised Absence is an absence for which the school has not been provided with a reason, or for which the reason provided is unsatisfactory. For any Leave of Absence requests you must contact our school office.

How parents can help

The Department of Education have put together a short guide to help parents understand how they can work with the school and local authority to support their children and get the right support.

[Guide for parents and carers on school attendance](#)

Our schools meals are designed to provide the students with variety and offer a good nutritional balance to promote a healthy lifestyle.

ParentPay School Meals

- To pay for School Meals we use a Cashless Biometric system, called ParentPay
- To learn more about ParentPay and create an account, please check out the link below:
<https://www.alperton.brent.sch.uk/school-life/parents/parent-pay/>



ParentPay
COUNT ON US

Applying for Free School Meals

If your child is eligible for 'free school meals' (FSM) AND you register them for this, we will receive extra funding called 'pupil premium'. We use this extra money to improve the educational provision and resources at the school.

- £2.80 a day at the canteen
- Additional resources, e.g. school uniform, PE kit, IT devices, tuition and intervention, funding for trips etc.

Check if your child is eligible: <https://pps.lgfl.org.uk/>

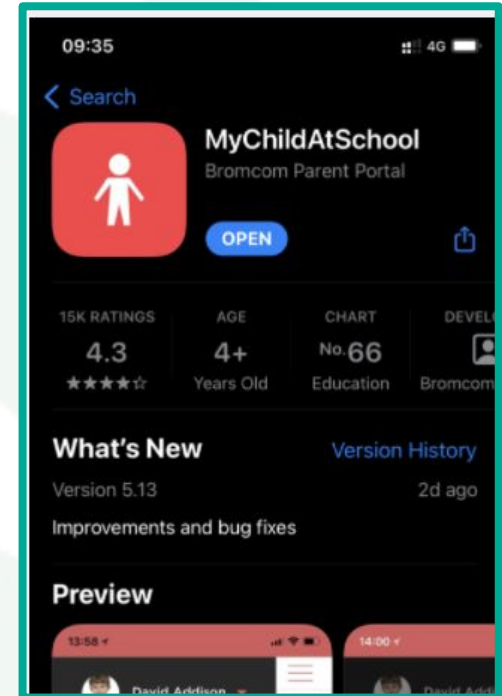


Free School Meals
Eligibility Checker

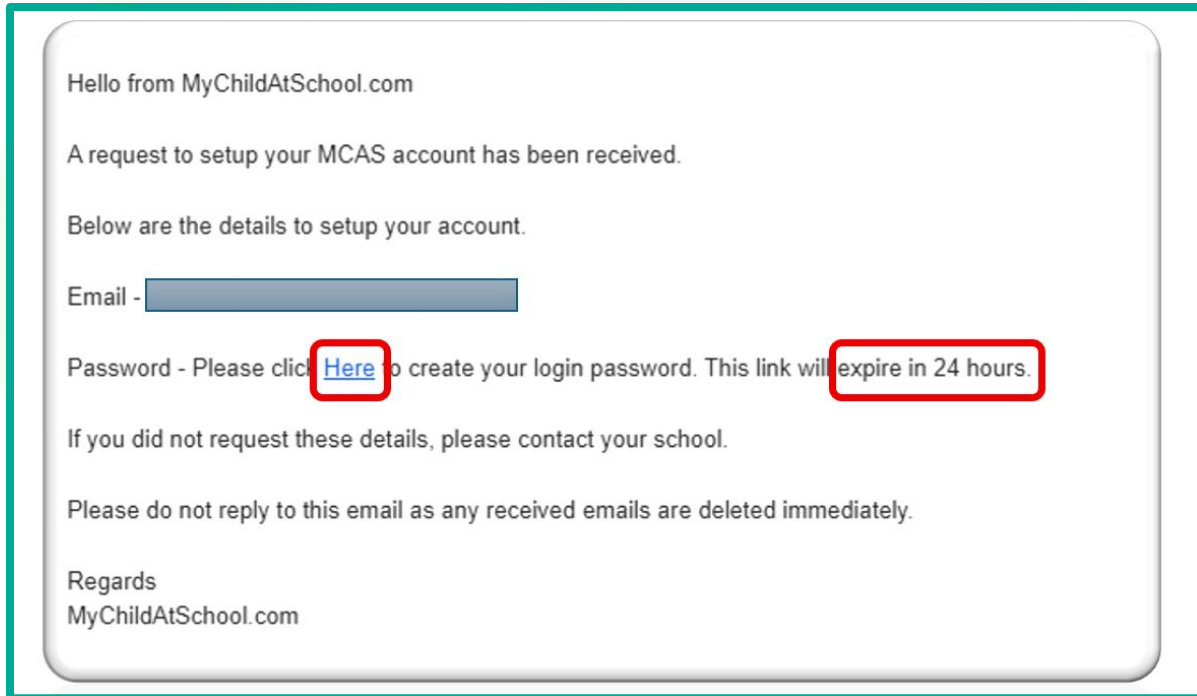
We are a **PAPERLESS** school and the main form of communication with parents will be via a portal called **MyChildAtSchool [MCAS]**.

MyChildAtSchool provides:

- Access to real-time Attendance, Assessment and Behavioural data
- An insight to parents on their child's schoolwork (homework topics etc.)
- Communication facilities to improve contact between parents and schools
- Instant access to Published Reports and Letters
- Option to purchase Items, join Clubs or book Trips



To login to the MCAS Parent Portal you will need to use the e-mail address registered with the school. You will receive a sign-up email with instructions and information how to set up your account, as shown in the screenshots below. Please follow the instructions to sign up.



Via MCAS you will be able to fill in the Admission Form and Parental Consents.

The screenshot displays the myChildsSchool.com interface for Alperton Community School. The top navigation bar includes the school's logo and the text "Alperton Community School". Below this, the page title is "Admission Form" with a sub-label "Admission Form". A message states, "You have already submitted the Student Details section." Below the message is a blue bar labeled "Student Details". To the right of the main content area, there are two buttons: "View Parental Consents" (highlighted with an orange border) and "View Your Personal Details" (highlighted with a purple border). The left sidebar contains a navigation menu with items: "AAB AAB Change Student", "Dashboard", "Admission Form" (highlighted with a green border), "Attendance", "Behaviour", "Detentions", and "Exam Timetables". The main content area lists the following fields: "Legal First Name", "Legal Middle Name(s)", "Legal Last Name", "Preferred First Name", and "Preferred Last Name".

School policy on No mobile phones in School

Please Note: The government are proposing a law to make all schools a mobile phone free. This, we think, will be in place for September 2026.

To ensure we are working within the law, we are a **no mobile phone school**.

If any mobile phone is seen in school, it will be confiscated and only returned to a parent / carer.

Learning Journey

- 📖 Take part in reading programmes and literacy support to build strong foundations
- 🧠 Complete assessments and act on feedback to improve over time
- 🤝 Receive targeted support (check-ins, mentoring, intervention) where needed
- 🏠 Get involved in clubs, trips and enrichment activities
- ❤️ Develop wellbeing, confidence and positive relationships

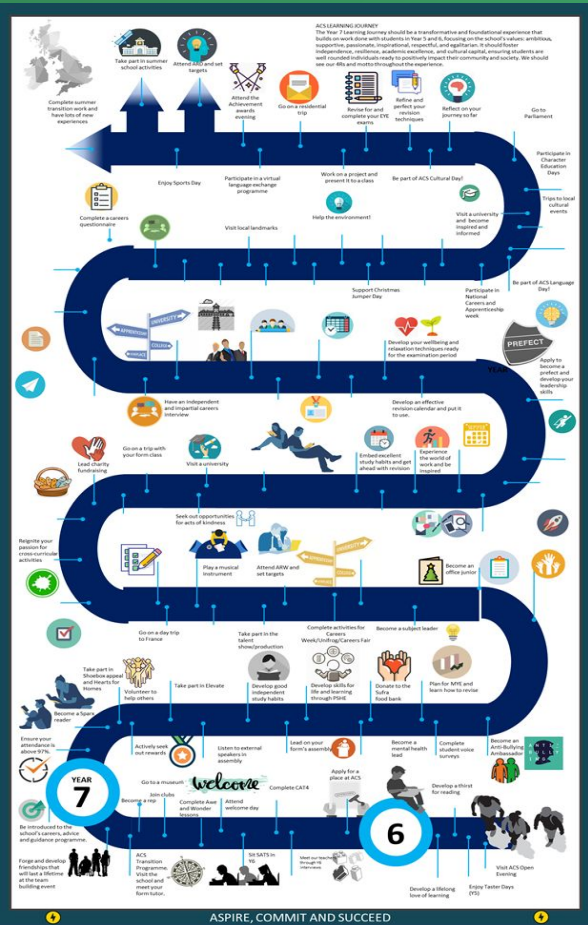
This journey helps you become:

Ready • Respectful • Responsible • Resilient 🌟

Learning Journey

As you move through the year, you will:

- 📚 Build strong learning habits and independent study skills
- 🗣️ Take part in presentations, discussions and oracy activities
- 🎯 Set goals and reflect on your progress and achievements
- 🌍 Engage with wider opportunities and school events
- ✈️ Begin to explore future pathways, interests and ambitions



Y7 Curriculum

English	7
Maths	7
Science	6
History	4
Geography	4
RS	2
PE	4
Computing	2
Art	3
Drama	2
Music	2

Y7 Curriculum

Design Technology	2
● Product Design	
● Food Technology	
● Textiles	
Languages	4
● Spanish	
● French	
Enrichment	1

What should this include?

- Homework set by teachers
- Revision (quizzes, flashcards, Seneca, Sparx Maths/Science, Bedrock Learning)
- Practice (writing, reading, completing unfinished work)

How can you support at home?

- Year 7 students should **complete home learning every day (minimum 45 minutes)**
- Builds independent learners, strong habits and routines from the very start
- Helps students become **Ready and Resilient** learners
- Supports memory, confidence and exam success over time

How can you support at home?

- Set a regular time and quiet space
- Encourage independence, but check work is completed
- Praise effort and consistency

Alperton PTFA is a strong partnership between parents, teachers, students, and the wider community. They aim to enhance the whole educational experience for every Alperton student, including those transitioning here from primary school, by supporting school initiatives, organising inclusive events, and raising funds that enrich learning and wellbeing throughout their learning journey.

What does the PTFA do?

- Raising funds for student activities, resources and enrichment
- Organising events for students, families and wider community
- Creating opportunities for parents and carers to get involved
- Strengthening links between home, school and community

Everyone is welcome – whether you can give a little time or a lot



Parental engagement (PTFA)

Aspire | Commit | Succeed

How to get involved

Find out more about the PTFA, when we meet, events that we organise etc.

Please check out the [PTFA section on the school website](#) or email us at PTFA@alperton.brent.sch.uk

The PTFA chair is Sunil Bhudia.

The next event you can take part in is our Summer Fair, taking place on Saturday 11 July.



Good Luck for Year 6 and we look forward to seeing you for your Induction day!

Please do not hesitate to contact us if you have any queries!

