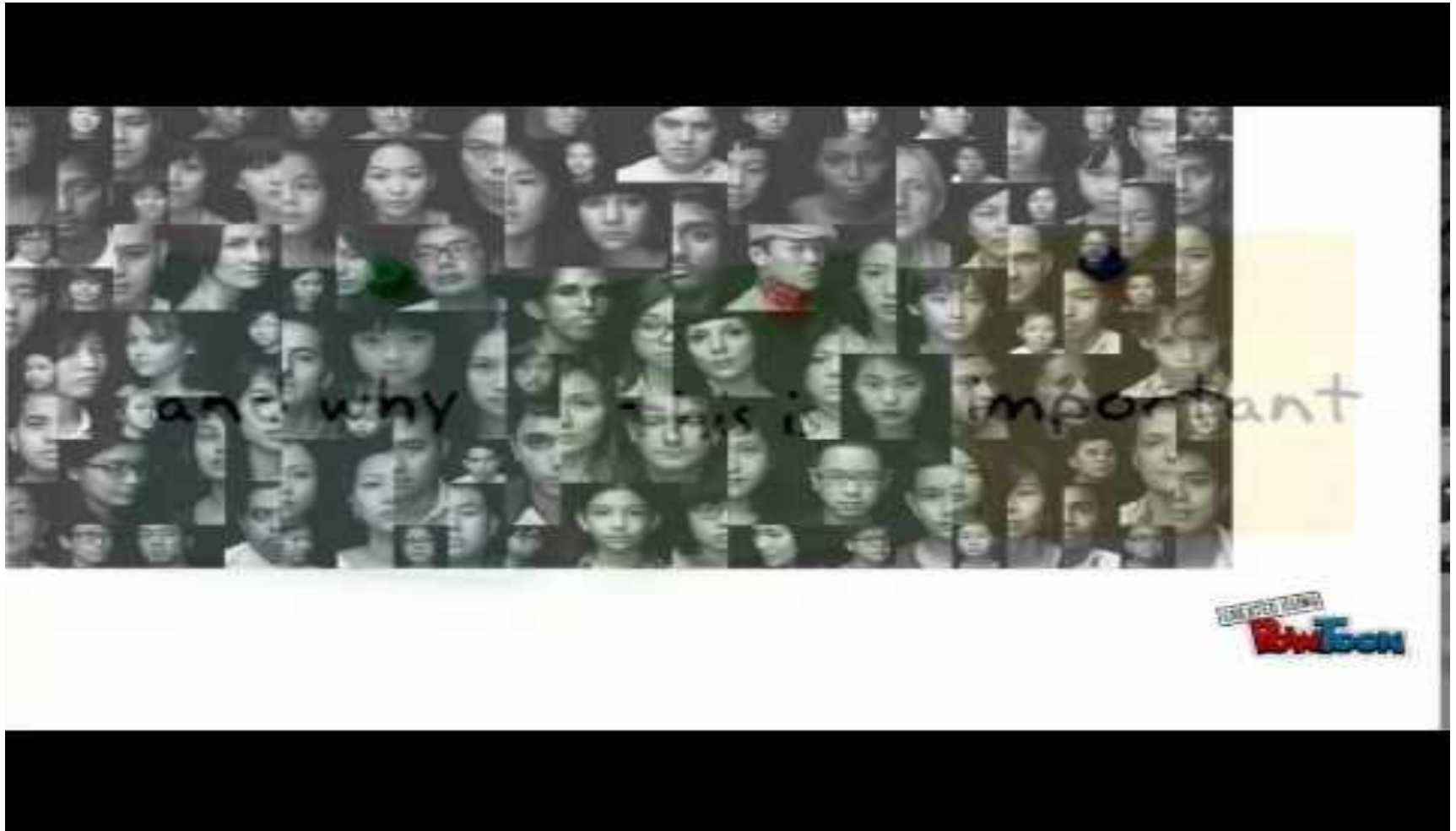




**Key term**  
**Sociology** - the study of society and human behaviour

# What is Sociology?



# Punishment or discipline?



IT'S DISCIPLINE

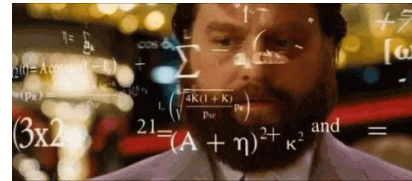


NOT CHILD ABUSE

Hands up if you think this is a **punishment**?  
- Who thinks it is **discipline**? Why?

# Why study sociology?

- It will allow you to understand **how** society works.
- It will allow you to understand why and how society **changes** over time.
- It will make you **question** everyday life that you have taken for granted and never analysed.



**CHANGING  
ATTITUDES**



- Excellent
- Very good
- Good
- Average
- Poor

This course consists of  
2 units:

**Unit 1:** The sociology of  
Families and  
education

**Unit 2:** The Sociology of crime  
and deviance and social  
stratification

# Specification (AQA)

## 2.2 Assessments

### Paper 1: The sociology of families and education

#### What's assessed

- The sociology of families
- The sociology of education
- Relevant areas of social theory and methodology

Students will be expected to draw on knowledge and understanding of the entire course of study to show a deeper understanding of these topics.

#### How it's assessed

- Written exam: 1 hour 45 minutes
- 100 marks
- 50% of GCSE

#### Questions

- Section A has two multiple choice questions followed by a range of short and extended responses.
- Section B has two multiple choice questions followed by a range of short and extended responses.

### + Paper 2: The sociology of crime and deviance and social stratification

#### What's assessed

- The sociology of crime and deviance
- The sociology of social stratification
- Relevant areas of social theory and methodology

Students will be expected to draw on knowledge and understanding of the entire course of study to show a deeper understanding of these topics.

#### How it's assessed

- Written exam: 1 hour 45 minutes
- 100 marks
- 50% of GCSE

#### Questions

- Section A has two multiple choice questions followed by a range of short and extended responses.
- Section B has two multiple choice questions followed by a range of short and extended responses.

# Paper 1.

(How we find out about society  
e.g. research methods) Education  
& Families



**WE  
ARE  
FAMILY**



- Excellent
- Very good
- Good
- Average
- Poor

# Paper 2.

## Crime and Deviance & Social Stratification

crime statistics , causes of crime, why are some people rich and some poor?



# Who will teach me?



Ms Lazare

Ms Dwyer

**Feel free to ask us any questions about the course when you see us around.**





# Careers



- Criminal Justice System (e.g. police or probation services)
- Social worker
- Youth worker
- Teacher
- Researcher /policy officer
- Media and marketing

