



ALPERTON
COMMUNITY SCHOOL

School Prospectus



Who we are.

We are a **REMARKABLE SCHOOL** because we are:

Ambitious

We will nurture each of our students to become successful adults who will impact positively on their local community and society as a whole.

Supportive

We will provide a supportive, vibrant and stimulating learning environment where every student can thrive.

Passionate

We will imbue each of our students with a passion and love for learning.

Inspirational

We will inspire and motivate each of our students to be the best they can be.

Respectful

We are highly inclusive, embrace all cultures and beliefs and have a strong sense of community.

Egalitarian

We believe in the principle that all people are equal and deserve equal rights and opportunities.

Leadership and management was judged to be outstanding
“Leaders’ expectations of all pupils are high. They have ensured that pupils study a broad range of subjects”.
(Ofsted, July 2021)

Welcome

Alperton Community School is a remarkable school, where our students are nurtured, challenged and driven to achieve outstanding progress.

Our academic progress places us as one of the top schools for GCSE. At A-Level a significant number of our students progress to Oxbridge and Russell Group universities. As a non-selective, community school, with a wonderfully inclusive, diverse and vibrant local community, we are particularly proud of our student outcomes.

With our inspiring teaching and learning, we expect nothing less than exemplary student behaviour and attitudes to learning at all times, enabling students to engage fully in their learning environment. In May 2025, Alperton Community School was awarded the Pearson National Bronze Award for Making a Difference – for our commitment to changing the lives of the children we work with every day.

Our varied and extensive curriculum is delivered in our modern, well-resourced buildings and facilities. Through our supportive, vibrant and stimulating learning environment, our values enable our students to:

- Have a passion for learning and inspire them to be the very best they can be.
- Achieve their academic potential.
- Have a wide range of experiences, both in and out of the classroom.
- Grow into happy, confident, resilient and articulate young people.
- Leave Alperton Community School equipped to lead fulfilling lives and make a positive contribution to our local community and society.

Mr Christopher Dixon (MEd, BSc, BMus)
Headteacher

Alperton School History

Alperton School first opened in 1922. The building was previously a mansion that was purchased to provide accommodation for a new mixed Secondary School, called Alperton School. The first Headteacher, Mr Edmund Lightley, was a visionary man who helped renovate the school and put down its foundations.

In 1928, the school buildings were extended and the school acquired the name Wembley County School. In 1938 the old mansion, known as Alperton Hall, was entirely demolished and the new main building began to take shape. Education continued to take place in the school during the war.

In 1948, Wembley hosted the Olympic Games - the first games after the war - and since the country was still recovering after the war, there was no money to build an Athlete's Village. Thus, most of the competitors were hosted in RAF camps, colleges and schools around London, and Wembley County School was one of them.

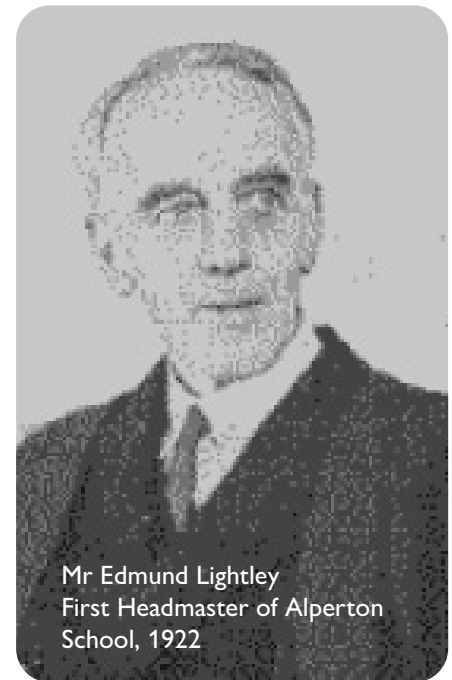
In September 1967, Alperton High School was formed, taking in 1,305 pupils and a full complement of staff was split between the two sites at Stanley Avenue and Ealing Road.

In April 1991, Alperton High School took control of its own finances under the Local Management of Schools (LMS) initiative, and in 1992, Mr Pankaj Gulab became the leader of the school, subsequently renamed Alperton Community School.

Throughout the years the school has had numerous successful students. Amongst others, the English football player Ron Greenwood, best known for managing the English national football team and West Ham United, the famous musician Keith Moon, the drummer of the English rock group The Who, and Nicholas "Nickie" Hopkins, a famous musician who recorded and performed on many notable British and American pop bands, including Rolling Stones.



Jamaican Olympic Team outside the school building, July 1948



Mr Edmund Lightley
First Headmaster of Alperton School, 1922



Mr W G Neil
Headmaster of Wembley County School in 1945



Alperton Hall (c. 1921)

Our Ethos and Values

We set out our ethos and expectations very clearly from day one. Our vision is to provide every student with an outstanding education within a supportive, vibrant and stimulating learning environment.

We enable every student to reach their full academic and personal potential by instilling a passion for learning within a caring, supportive community that embraces all cultures and beliefs. We will nurture every student to become a successful adult who will impact positively on their local community and society as a whole.

Our mission is to inspire each and every student in our community to fulfil their academic and personal ambitions by delivering outstanding education with commitment and passion. In order to fulfil our mission we expect our students to be 'Ready, Respectful, Responsible and Resilient'. We place great importance on mutual respect and take time to reinforce our vision and values in every aspect of school life.

Aspire | Commit | Succeed



“Pupils like coming to school and they enjoy their lessons. Pupils know that teachers expect them to be ready, respectful, responsible and resilient in their learning. Pupils can focus because they feel safe”.
(Ofsted July 2021)

alperton.brent.sch.uk

Developing a love for learning

We provide a learning environment where every student will meet or exceed their expectations and we aim to ensure that every student achieves the best possible examination results.

We have an exciting, stimulating curriculum from which students can gain pleasure in learning and develop interests and attitudes which will continue throughout life. Our curriculum promotes British Values and recognises the importance of democracy, the rule of law, individual liberty, mutual respect and tolerance.

We build on the work of primary schools so there is no break in education for our new Year 7 students who follow a broad, balanced curriculum which puts them on the pathway to succeed in public examinations at the end of Year 11.

Our curriculum is structurally differentiated to meet individual needs. In Year 9 students choose options in

performing arts and design technology. There is the opportunity to study a second language. In Years 10 and 11, the curriculum offers further option choices including courses at GCSE level in Business, Computing, Media, Sociology and Health & Social Care. We offer a wide range of academic and A-Level courses in the Sixth Form.

We also offer a very wide array of extra-curricular activities from homework clubs, boxing, art and design, computing to performing arts.

Alperton has been awarded the 'Sportsmark' for excellence in our PE curriculum provision and we have a long history of participating in national sports events and competitions. We also participate in art and design competitions and have had outstanding success.



“Pupils focus well in lessons, with very little disruption from others. Pupils respond to teachers’ questions and are keen to show what they have remembered from previous learning”.
(Ofsted July 2021)



“Pupils behave well in school. They focus on their learning in lessons. Pupils follow teachers’ instructions and listen to one another”.
(Ofsted July 2021)

alperton.brent.sch.uk

Your Support and Wellbeing

At Alperton Community School we pride ourselves on the high level of pastoral care we offer to our student community. From Year 7 all the way through to Year 13 our students are well looked after by our outstanding Pastoral team. Each student is allocated to a form class in Year 7 and they move throughout the key stages in that same group. The Pastoral Manager (PM) and Head of Year (HOY) will stay with the year group throughout their time at Alperton.

All our staff are responsible for establishing happy, secure and supportive relationships with students. Students in turn feel secure and are able to thrive as a result. We have an experienced Pastoral team that runs a plethora of interventions for our students on a one-to-one basis or in small groups. These interventions include Academic & Character mentors, Drawing and Talking therapy, Zones of Regulation, PSPs (Supported

by Brent Council). We work closely with the Inclusion Support Service in Brent.

The school mission of making students Ready, Respectful, Responsible, and Resilient informs everything that the Pastoral team does. The Pastoral team also works closely with parents and teachers to make sure the values of Ready, Respectful, Responsible, and Resilient are being consistently modelled and supported across home and school life.

At Alperton we take a holistic approach to student development, ensuring all students are ready to engage in learning, are respectful towards others, responsible for their actions, and resilient in the face of challenges. All of this supports the broader mission of helping students become well-rounded, confident individuals.

Aspire | Commit | Succeed

Our Inspirational Environment

Alperton Community School is privileged to have two beautiful and well-equipped school campuses. Our school on Ealing Road was opened in 2018 and occupies a site next to Alperton Underground station. Being a new school, it offers the latest in school design in terms of learning spaces and digital technology. As such, our science, computer, drama, and art facilities, as well as our other learning spaces, are up to date and very well maintained, providing students with an excellent learning environment.

Our Stanley Avenue school was opened in 1938 as the Wembley County Grammar School. Over the past few years we have invested substantially in the school, which has undergone a major programme of refurbishment

to bring the facilities up to date, whilst preserving its traditional character. The building includes refurbished classrooms and specialist spaces, creating an excellent and welcoming place to learn. Of specific interest at Stanley Avenue is the Main Hall and Library, which really illustrate the rich cultural heritage of Alperton Community School.

Alperton also has a separate sports facility located in Woodstock Avenue. This is used for sports activities and other events taking place at school.

Also, as a community school, many local groups and organisations use our facilities in the evenings and weekends.





“Leaders provide pupils with a wide range of activities beyond the classroom. Pupils attend clubs such as boxing, archery and chess. Subject leaders also plan trips and visits to complement the curriculum. For example, pupils can take part in trips overseas or go to the theatre”.
(Ofsted July 2021)

alperton.brentsch.uk

Our Enrichment Activities

We believe in offering students a wide variety of extra-curricular activities. Thanks to the skills and enthusiasm of our staff, we are able to offer a diverse range of clubs and activities.

We offer a range of ‘Lunchtime clubs’ which include science, games, computing and sports, and ‘After school’ clubs which include Art & Design, Performing Arts, Music, Sports, as well as a homework club and use of the Library on both sites well beyond the end of the school day.

Many trips and visits are held during the school year to enhance students’ knowledge and understanding. We run residential trips abroad, for example to France and Spain, which allow students to practise their language skills as well as learn about culture and life in a different country. We have a number of field trips closely linked to

curriculum studies organised for Science and Geography. In other subjects we have visiting theatres, workshops, as well as visits to the theatre, museums and art galleries, as part of students’ cultural learning.

We believe that team building is essential to creating a harmonious and collegiate atmosphere in school. On our Character Education Days students take part in a range of inspirational and adventurous learning activities to develop team-working and problem-solving skills, both in and out of the classroom.

Students also develop their knowledge of Personal, Social, Health and Economic (PSHE) education on special days which equip our students with the knowledge, understanding, attitudes and practical skills to live healthily, safely, productively and responsibly.

Our School Community

We are immensely proud of our caring, multi-cultural community and we strongly believe that teaching students to co-exist in an environment of mutual respect is fundamental to their education and ultimately to their integration into the world of work.

Parents are key in the success of Alperton Community School. We encourage parents' involvement in supporting and encouraging students in their school work. Experience shows that by monitoring learning through the student's diary, ensuring full attendance and attending information evenings, parents can make a huge difference to a student's achievement.

Our school is at the heart of the local community and runs Easter and summer clubs which provide a range of recreational activities during holidays. These are well attended by our own students, children from our main feeder primary schools and the local community.

Alperton has a very active Parents and Friends Association who help with fund raising, volunteering and other activities. We have strong links with employers and community organisations that help mentor students to develop an awareness of the working world.

Aspire | Commit | Succeed



“Leaders have thought carefully about how they can support the development of pupils’ character. Personal, social, health and economic education is well established across the school from Year 7 to Year 13.”
(Ofsted July 2021)



alperton.brent.sch.uk

“In the sixth form, there is a clear focus on helping students to mature into young adults. Students enjoy opportunities to be leaders for subject areas and for well-being”.
(Ofsted July 2021)

Alperton Sixth Form

We are proud of our strong track record in enabling every student to reach their full academic and personal potential. Our Sixth Form students consistently perform exceptionally well at A-Level.

Students who are part of our school in Years 7 to 11 are given priority when applying to join our Sixth Form, ensuring a smooth and supported transition into post-16 study within a familiar and high-achieving environment.

Joining our Sixth Form means becoming part of a thriving community committed to excellence and success. Our students benefit from increased freedom and autonomy, supported by a carefully structured framework that prepares them for the demands of further study and the world beyond school. We understand that the transition from Year 11 to post-16 study brings new challenges, which is why we provide the right guidance at every stage to ensure students grow in confidence, responsibility, and independence.

We offer specialist teaching and personalised support that is recognised for its high quality, both locally and beyond. Every student receives a Chromebook laptop and full access to our virtual learning environment,

alongside a range of digital learning tools that support individual study. These resources enable students to take ownership of their learning in ways that suit their individual needs and study styles. Our dedicated Sixth Form block also includes a suite of quiet study rooms to promote focused, independent learning throughout the day.

We enjoy strong partnerships with a wide range of universities, and many of our students go on to study at prestigious Russell Group institutions and top Medical Schools. Many also progress directly into high-quality apprenticeships with global companies.

Alongside academic and career success, we are committed to developing well-rounded young people with strong moral and social values, ready to make a positive contribution to society. This is why we encourage all students to volunteer, either within the school or through wider community initiatives. Our Sixth Formers take pride in giving back to the community.

Check our full Sixth Form Prospectus to discover everything our Sixth Form has to offer.

Aspire | Commit | Succeed

Your Future Beyond Alperton

At Alperton we offer extended career advice and support and equip students with the tools, experience, and confidence necessary to make their ambitions a reality.

Our careers programme includes talks from external professionals and successful alumni, alongside tailored workshops in PSHE. Students are encouraged to attend taster days and take part in outreach schemes with prestigious organisations such as the Sutton Trust and SMG, gaining valuable insight into university life and future careers.

We are proud that the majority of our students secure places at their first-choice universities. Our students are currently represented at prestigious Russell Group universities including Cambridge, Imperial, Warwick,

Bristol, King's College (London), Queen Mary, Nottingham, Queen Mary (London), London School of Economics, University of Glasgow and UCL reading a wide range of subjects including Medicine, Pharmacy, Law, Computing, Sociology, Psychology, Business, English, Fine Art, Astrophysics and Engineering.

Many of our students move directly into competitive, well-paid apprenticeships with global companies such as NHS Trust, Deloitte, KPMG, PwC, Amazon, Google, Goldman Sachs, IBM and DLA Piper. Our dedicated Apprenticeship Lead works closely with students to open these exciting career pathways. As a result, in 2025, Alperton was shortlisted for Apprenticeship School Provider of the Year.

Aspire | Commit | Succeed



Degree Apprenticeship in Digital Business with Google



Digital and Technology Solutions
Apprenticeship with IBM



Audit and Assurance Apprenticeship
with Deloitte UK



Buying and Merchandising Apprenticeship
with Amazon UK



Lower-school site

Ealing Road, Wembley, Middlesex, HA0 4PW

Upper-school site

Stanley Avenue, Wembley Middlesex, HA0 4JE

Tel: 020 8902 2038

Email: office@alperton.brent.sch.uk

www.alperton.brent.sch.uk

Follow us: [@alpertoncs](https://www.instagram.com/alpertoncs)

