

20 May 2021

Dear Parent/Carer,

We will be taking part in a new study called “Daily Contact Testing” which is being led by the Department for Health and Social Care through NHS Test and Trace.

Why is this study important?

Normally, when we identify a person who has COVID-19, the whole group of people that have been in close contact with that person have to go home and self-isolate for 10 days to stop the virus spreading. This can mean that many students are absent from school, but it is important to do this to protect the other people in school and at home.

As part of the study, we will continue current guidance and, in addition, provide two [Polymerase Chain Reaction](#) (PCR) tests whilst close contacts self-isolate at home after contact with a positive person. **We will continue to follow national guidelines and self-isolation guidance as normal for all students and staff.** The study will help in deciding how people in schools are tested in the future.

Is taking part voluntary?

Participation in the study is completely voluntary. If students do not wish to take part, they can choose not to or withdraw at any time.

What does the study involve?

When a positive case is identified in school, the school will be asked to tell the research team those individuals who are taking part in the study that had been in close contact.

Students and staff identified as a close contact who are taking part in the study will be asked to perform two COVID-19 tests at home whilst self-isolating:

A PCR test at home **on day 2 and day 7** – two home PCR testing kits for the study will be provided. These are similar to the tests performed at NHS Test and Trace sites. A swab is taken at home from the nose and throat. There will be instructions on how to return the swab. The swabs will be processed in a laboratory after two weeks. **Results of these tests will therefore not be available until after the self-isolation period.**

Students and staff will be asked to complete a brief survey on day 7 and may be invited to speak to a researcher.

Will you tell me my results?

The two COVID-19 tests sent whilst self-isolating will only be processed after two weeks. Results of these tests will therefore only be available after the self-isolation period.

What should a student do if they develop symptoms?

If students develop symptoms at any time during the study, they must immediately self-isolate and book a test at <https://www.gov.uk/get-COVID-19-test> or by calling 119. The school should be informed if the test result is positive.

If a student reports a positive test at any point during the study they will be provided an additional special home PCR test kit for the study.

Are household contacts or other people able to participate?

This study is **only** open to students and staff at schools who have been identified as a close contact of a student or staff member at school. If a student or staff member is a household contact, they are not able to participate.

What will you do with my information?

This is a summary of the School's Privacy Notice for Daily Contact Testing Trial that you will be provided a copy of:

We will collect personal information, including names, date of birth, contact details and names of contacts at school for you and the people you have been in contact with. This information, together with COVID-19 test results will be provided to the Department of Health and Social Care (DHSC) so they know when someone tests positive to help stop the spread of the virus. Information is also shared with DHSC to help assess how effective the trial is. DHSC are the 'controller' for this use of personal data – they decide how it will be used and are responsible for it. The school use this information to help us manage our COVID-19 response within the school – where we do this we are the controller of the personal data.

The use of personal data by the school and by DHSC is made lawful as it is being used for the protection of public health. We will keep all the information securely in accordance with the UK General Data Protection Regulation (UKGDPR) and Data Protection Act 2018.

If you would like to ask about how your personal data is used or if you have a complaint you can contact:

School: dpo@alperton.brent.sch.uk

Department of Health and Social Care: data_protection@dhsc.gov.uk



RENAISSANCE
Champion School

Also enclosed are 'DCT_Overview' & 'DCT_FAQ_Parents' pdf files for more information.

We hope you will be willing to participate in this trial; should you have any questions about the trial, please contact the school by email to dct_trial@alperton.brent.sch.uk

Yours sincerely,



Mr G McKenna
HEADTEACHER



RENAISSANCE
Champion School

DCT FAQs



Test and Trace

Why does my child have to do a test for 7 school days?

Antigen lateral flow device (LFD) rapid tests are more accurate the more virus that is present. We know that the levels of virus in a person can change from the day of exposure, normally peaking around the onset of symptoms. By testing on school days for 7 consecutive days we can detect the vast majority of cases. Students must isolate during weekends and holidays.

How is the schools/colleges clinical trial being monitored?

The trial is being co-ordinated and managed by Department of Health and Social Care (DHSC), Department for Education (DfE) and Office of National Statistics and ethics cleared by PHE.

It will also be independently evaluated and overseen by an independent data monitoring committee and a trial steering group.

Should my child have an LFD if they previously tested positive?

Twice weekly testing is not needed for 90 days after testing positive. However even people who have recently tested positive need to self-isolate if they are a close contact of someone testing positive for coronavirus. Therefore you may opt to do DCT with LFDs rather than self isolate if your school/college is in the Intervention Group of the study. If you test positive in DCT, you will have to self-isolate for ten days.

How accurate are the LFD tests?

LFDs perform best when levels of virus are at their highest. This means they are particularly useful as a means of finding infections in individuals who do not experience and show any symptoms, but who could still be infectious and pass the virus to others. LFDs are highly sensitive and test positive in the majority of people with high amounts of virus present.

If I don't want my child to do DCT, what happens?

DCT is not mandatory. If you do not wish your child to do DCT or stop mid-way through, your child will revert to the legal duty to self-isolate for the original 10-day period.

What if my child has an invalid result?

If the test is invalid, the participant should have another LFD test.

What if my child does not test positive?

If your child's daily test is not positive, it is likely that they are not infectious, and may continue with schools/colleges that day while following the simple guidance of Hands, Face and Space. In the evenings and at the weekend however, they must follow the government guidelines and self-isolate at home.

What if my child tests positive?

If the test is positive, you should assume your child has the virus, self-isolate immediately, and follow government guidelines.

What is Daily Contact Testing (DCT)?

Daily Contact Testing (DCT) is the regular, daily testing of **close contacts** of individuals who have tested positive for COVID-19.

What is the benefit of taking part in this trial?

To keep students in face-to-face education for as much time as is possible.

To restrict self-isolation to a primary group of people (positive case) and reduce the impact of self-isolation to a secondary group of people (close contacts).

Why do LFD tests give 'false positives'?

LFDs give a very small number of false positive results out of every 1000 tests performed. LFDs are particularly useful as a means of finding infections in individuals who do not experience and show any symptoms, but who could still be infectious and pass the virus to others.

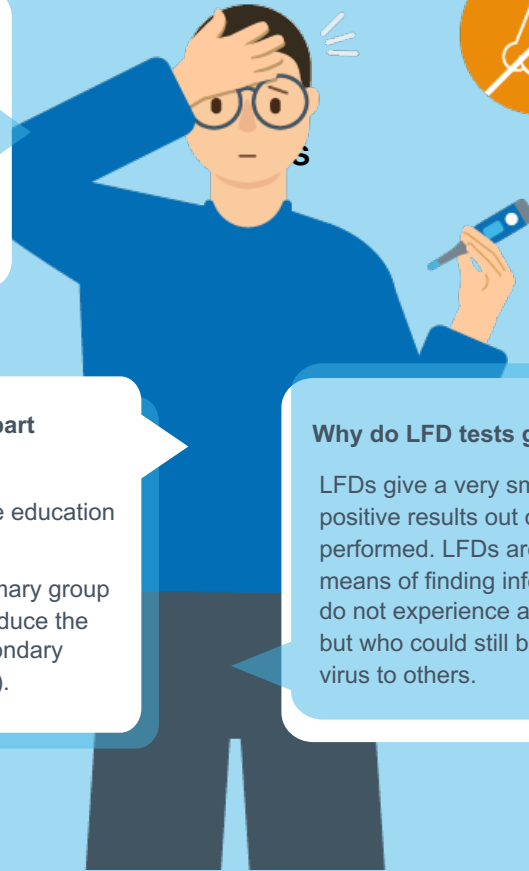
If my child is engaged in DCT, what can my household do?

They should continue about their day as per normal.

If your child tests positive or develops symptoms during the testing regimen, they should start self-isolating in line with government guidance.

How safe is DCT?

According to initial research, 7 days of DCT may prevent more additional transmission than quarantine if DCT is followed fully. DCT has potential advantages of tracking more contacts earlier, whether they have symptoms or not. DCT may also reduce the social and economic burden of quarantine on contacts. In school-type settings, mass testing and DCT are shown to be more effective at reducing infections than year-group isolation in initial studies. The purpose of DCT in schools/colleges is to confirm these early findings in a larger group.



PHASE 2 DAILY CONTACT TESTING IN SCHOOLS AND COLLEGES TRIAL

What is Daily Contact Testing (DCT)?

Daily Contact Testing is the regular, daily testing of close contacts of individuals who have tested positive for COVID-19.

The evidence from these pilots and evaluations will be used to inform any potential future rollout.

Is it safe for my school/college?

Yes. Around one in three people who have COVID-19 have no symptoms and could be spreading it without realising it.

By increasing the positive cases detected, Daily Contact Testing is potentially the best way to reduce the transmission of COVID-19 in the community.

The trial aims to answer this question, and the safety and progress of the trial is regularly reviewed by a panel of independent experts.

What is the benefit of taking part?

To keep students in face-to-face education for as much time as is possible.

To restrict self-isolation to a primary group of people (positive case) and reduce the impact of self-isolation to a secondary group of people (close contacts).

HOW IT WORKS



If your school/college has been randomly selected to Continue with self-isolation (Control Group)

- Individuals (close contacts) self-isolate at home for 10 days.
- In addition to this, they should do 2 x Research PCR tests (one on day 2 and one on day 7) which will be posted to and from the individual's house and the lab.
- PCR results are not available automatically but are available on request 2 weeks later.
- As a school/college, there is less impact to normal operations if assigned to this group as it is most like current mass testing nationwide.
- Funding to each randomly selected group will be equal.

If your school/college has been randomly selected to Trial Daily Contact Testing (Intervention Group)

- Rather than isolate for 10 days, the individuals return to school/college and have a rapid test every morning in school/college for 7 consecutive days. They can engage in all school/college activities only after a negative result is returned but must self-isolate in the evenings and weekends until the daily testing is finished.
- The Orient Gene LFD (Lateral Flow Device) test takes approximately 15 minutes to produce a result.
- In addition to this, they should do 2 x Research PCR tests (one on day 2 and one on day 7).
- PCR results are not available automatically but are available on request 2 weeks later.

Should you wish to make a rights request to DHSC, you can email them at data_protection@dhsc.gov.uk

How to complain

If you have any concerns about our use of your personal information, you can make a queries].

You can also complain to the ICO if you are unhappy with how we have used your data.

Wycliffe House
Water Lane
Wilmslow
Cheshire
SK9 5AF
Helpline number: 0303 123 1113